



REPORT No.: SZ23030352S01

Annex D Plots of Maximum SAR Test Results

Test Laboratory: Shenzhen Morlab Communications Technology Co., Ltd.

Date: 2023.04.28

Bluetooth_DH5_Back Side_0mm_Ch78_L

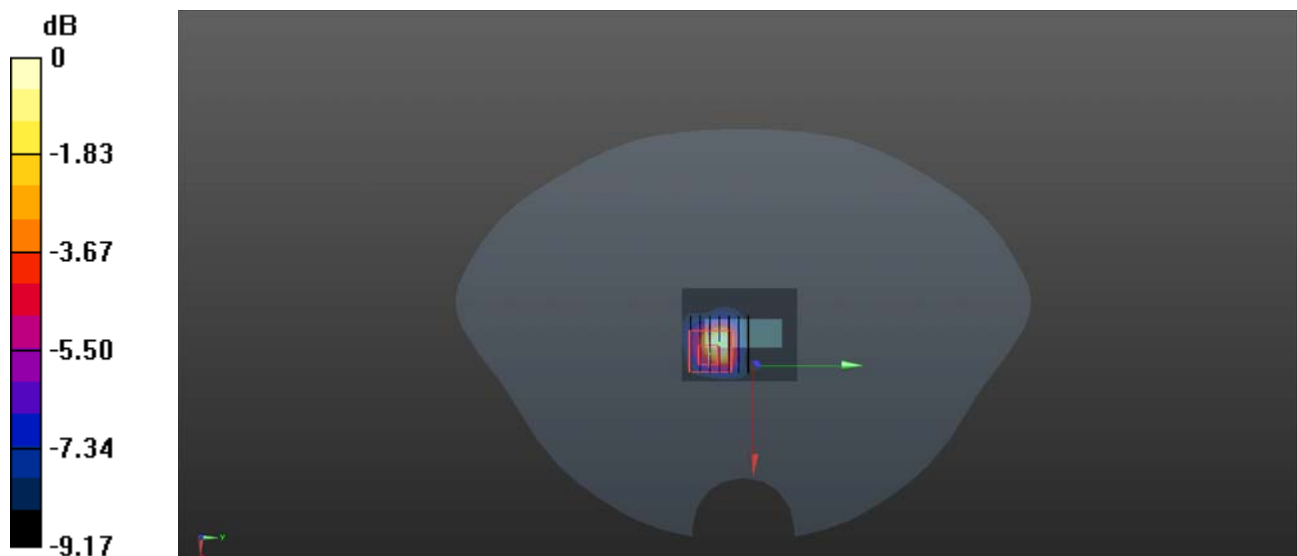
Communication System: UID 0, Bluetooth (0); Frequency: 2480 MHz; Duty Cycle: 1:1.085
Medium: HSL_2450 Medium parameters used: $f = 2480$ MHz; $\sigma = 1.839$ S/m; $\epsilon_r = 38.675$; $\rho = 1000$ kg/m³
Ambient Temperature : 23.2 °C; Liquid Temperature : 22.2 °C

DASY5 Configuration:

- Probe: EX3DV4 - SN7608; ConvF(7.6, 7.6, 7.6) @ 2480 MHz; Calibrated: 2023.03.15
- Sensor-Surface: 2mm (Mechanical Surface Detection)
- Electronics: DAE4 Sn1643; Calibrated: 2023.02.22
- Phantom: SAM 2; Type: QD000P40CC; Serial: TP:1464
- Measurement SW: DASY52, Version 52.10 (4); SEMCAD X Version 14.6.14 (7483)

Ch78/Area Scan (41x51x1): Interpolated grid: dx=1.200 mm, dy=1.200 mm
Maximum value of SAR (interpolated) = 0.541 W/kg

Ch78/Zoom Scan (7x7x7)/Cube 0: Measurement grid: dx=5mm, dy=5mm, dz=5mm
Reference Value = 10.64 V/m; Power Drift = -0.10 dB
Peak SAR (extrapolated) = 0.778 W/kg
SAR(1 g) = 0.284 W/kg; SAR(10 g) = 0.118 W/kg
Maximum value of SAR (measured) = 0.444 W/kg



0 dB = 0.444 W/kg

Test Laboratory: Shenzhen Morlab Communications Technology Co., Ltd.

Date: 2023.04.28

Bluetooth_DH5_Back Side_0mm_Ch0_R

Communication System: UID 0, Bluetooth (0); Frequency: 2402 MHz; Duty Cycle: 1:1.085
Medium: HSL_2450 Medium parameters used: $f = 2402$ MHz; $\sigma = 1.749$ S/m; $\epsilon_r = 38.922$; $\rho = 1000$ kg/m³
Ambient Temperature : 23.2 °C; Liquid Temperature : 22.2 °C

DASY5 Configuration:

- Probe: EX3DV4 - SN7608; ConvF(7.6, 7.6, 7.6) @ 2440 MHz; Calibrated: 2023.03.15
- Sensor-Surface: 2mm (Mechanical Surface Detection)
- Electronics: DAE4 Sn1643; Calibrated: 2023.02.22
- Phantom: SAM 2; Type: QD000P40CC; Serial: TP:1464
- Measurement SW: DASY52, Version 52.10 (4); SEMCAD X Version 14.6.14 (7483)

Ch0/Area Scan (41x51x1): Interpolated grid: dx=1.200 mm, dy=1.200 mm
Maximum value of SAR (interpolated) = 0.441 W/kg

Ch0/Zoom Scan (7x7x7)/Cube 0: Measurement grid: dx=5mm, dy=5mm, dz=5mm
Reference Value = 10.21 V/m; Power Drift = -0.02 dB
Peak SAR (extrapolated) = 0.706 W/kg
SAR(1 g) = 0.276 W/kg; SAR(10 g) = 0.117 W/kg
Maximum value of SAR (measured) = 0.472 W/kg

