

Test Laboratory: Huatongwei International Inspection Co., Ltd.,SAR Lab

Date: 1/30/2019

Anolog-Front of face

Communication System: UID 0, Analog (0); Frequency: 467.637 MHz;Duty Cycle: 1:1

Medium parameters used: $f = 468$ MHz; $\sigma = 0.874$ S/m; $\epsilon_r = 44.154$; $\rho = 1000$ kg/m³

Phantom section: Flat Section

Ambient Temperature:22.8°C;Liquid Temperature:22.5°C;

DASY Configuration:

- Probe: EX3DV4 - SN7494; ConvF(11.7, 11.7, 11.7) @ 467.637 MHz; Calibrated: 2/26/2018
- Sensor-Surface: 4mm (Mechanical Surface Detection)
- Electronics: DAE4 Sn1549; Calibrated: 4/25/2018
- Phantom: ELI V8.0 ; Type: QD OVA 004 AA ; Serial: 2078
- DASY52 52.10.2(1495); SEMCAD X 14.6.12(7450)

Front/Anolog-CH11/Area Scan (51x131x1): Interpolated grid: dx=1.500 mm, dy=1.500 mm
Maximum value of SAR (interpolated) = 0.645 W/kg

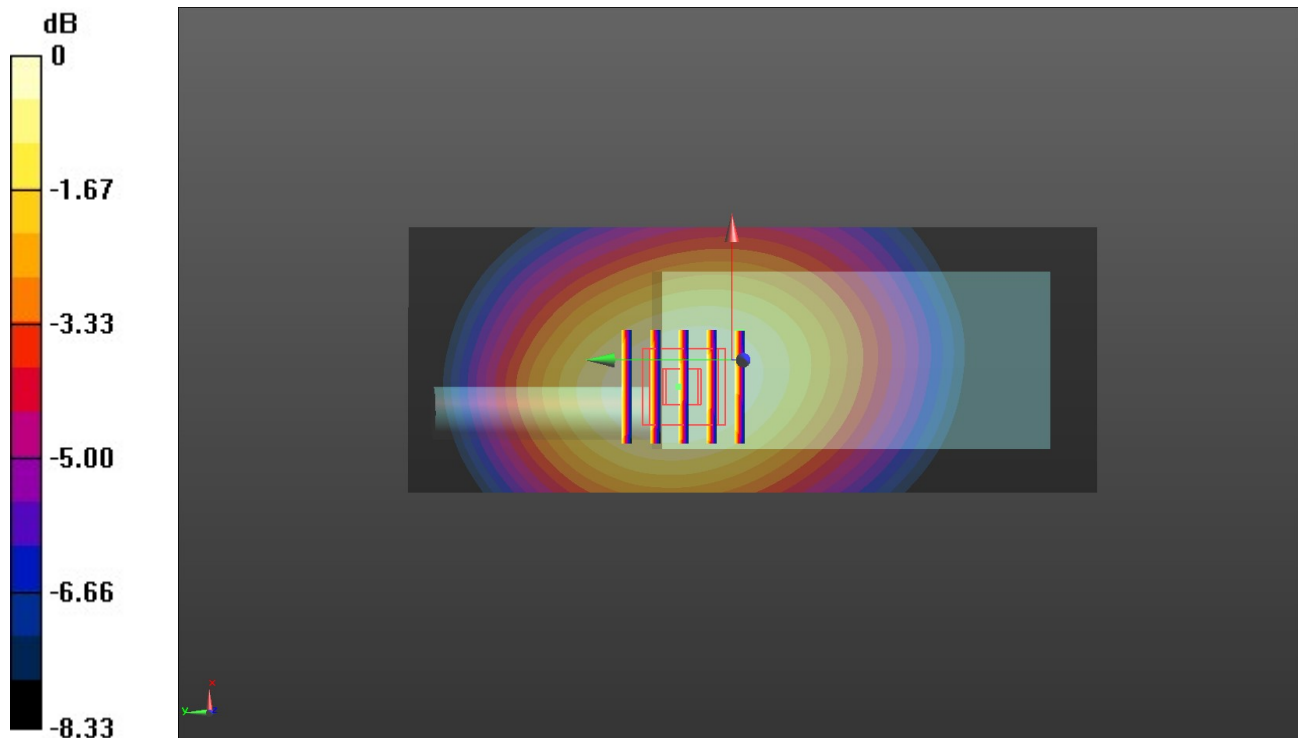
Front/Anolog-CH11/Zoom Scan (5x5x7)/Cube 0: Measurement grid: dx=8mm, dy=8mm, dz=5mm

Reference Value = 29.58 V/m; Power Drift = -0.15 dB

Peak SAR (extrapolated) = 0.762 W/kg

SAR(1 g) = 0.578 W/kg; SAR(10 g) = 0.424 W/kg

Maximum value of SAR (measured) = 0.610 W/kg



0 dB = 0.610 W/kg = -2.15 dBW/kg

Test Laboratory: Huatongwei International Inspection Co., Ltd.,SAR Lab

Date: 1/30/2019

Anolog-Body Worn

Communication System: UID 0, Analog (0); Frequency: 462.637 MHz;Duty Cycle: 1:1

Medium parameters used: $f = 463$ MHz; $\sigma = 0.97$ S/m; $\epsilon_r = 56.033$; $\rho = 1000$ kg/m³

Phantom section: Flat Section

Ambient Temperature:22.9°C;Liquid Temperature:22.7°C;

DASY Configuration:

- Probe: EX3DV4 - SN7494; ConvF(11.87, 11.87, 11.87) @ 462.637 MHz; Calibrated: 2/26/2018
- Sensor-Surface: 4mm (Mechanical Surface Detection)
- Electronics: DAE4 Sn1549; Calibrated: 4/25/2018
- Phantom: ELI V8.0 ; Type: QD OVA 004 AA ; Serial: 2078
- DASY52 52.10.2(1495); SEMCAD X 14.6.12(7450)

Rear/Anolog-CH4/Area Scan (51x131x1): Interpolated grid: dx=1.500 mm, dy=1.500 mm
Maximum value of SAR (interpolated) = 1.18 W/kg

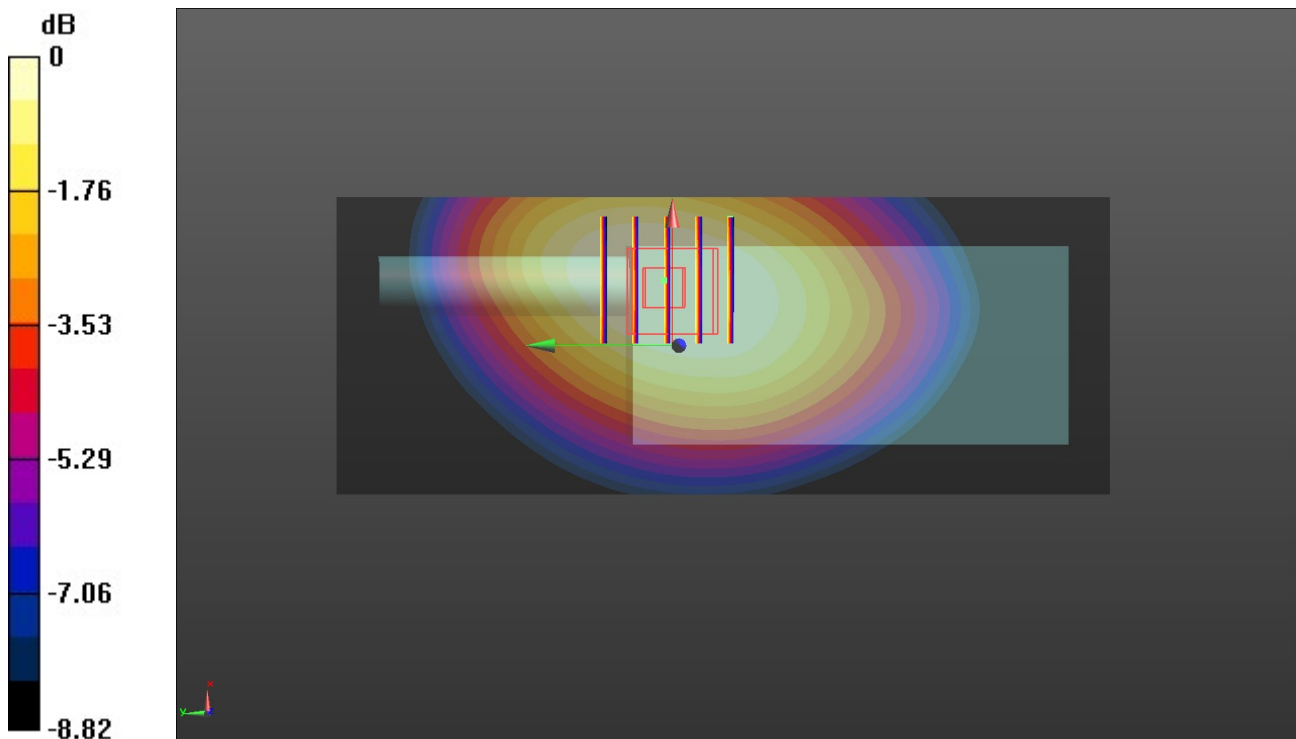
Rear/Anolog-CH4/Zoom Scan (5x5x7)/Cube 0: Measurement grid: dx=8mm, dy=8mm, dz=5mm

Reference Value = 32.33 V/m; Power Drift = -0.18 dB

Peak SAR (extrapolated) = 1.39 W/kg

SAR(1 g) = 1.03 W/kg; SAR(10 g) = 0.746 W/kg

Maximum value of SAR (measured) = 1.08 W/kg



0 dB = 1.08 W/kg = 0.33 dBW/kg