

1 Annex C – Internal pictures of EUT

1.1 List of Pictures

Picture 1: RF module in housing – top view.....2

Picture 2: RF module in housing – bottom view.....2

Picture 3: RF module – bottom view.....3

Picture 4: RF module – top view.....3

Picture 5: Detailed view of pins at the bottom of the EUT.....4

Picture 6: Detailed view of pins at the top of the EUT with antenna connector.....4

Picture 7: Opened EUT with antenna – top view5

Picture 8: Opened EUT with antenna – bottom view5



EMV **TESTHAUS** GmbH
Gustav-Hertz-Straße 35
94315 Straubing
Germany

PowerBox Systems GmbH
Receiver
PBR-9D

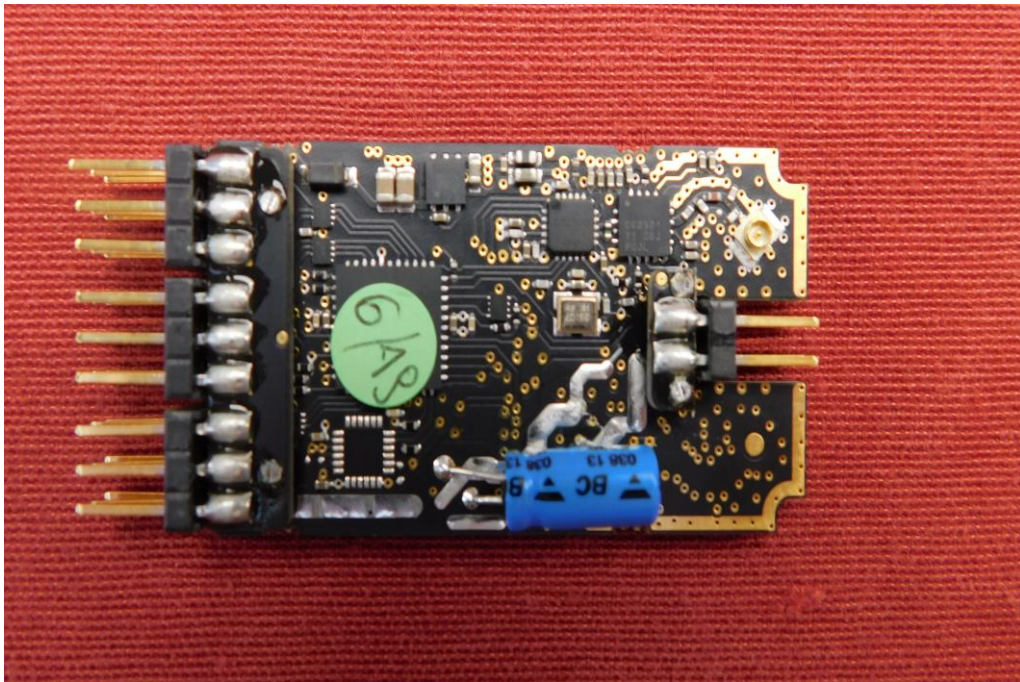
171026-AU03+W01
Annex C



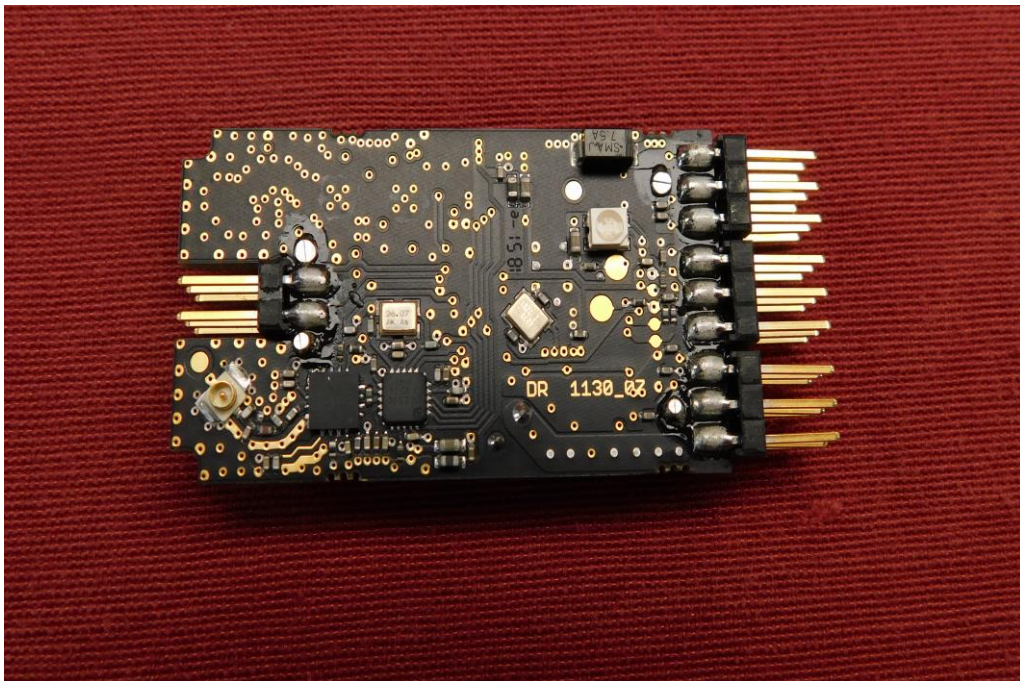
Picture 1: RF module in housing – top view



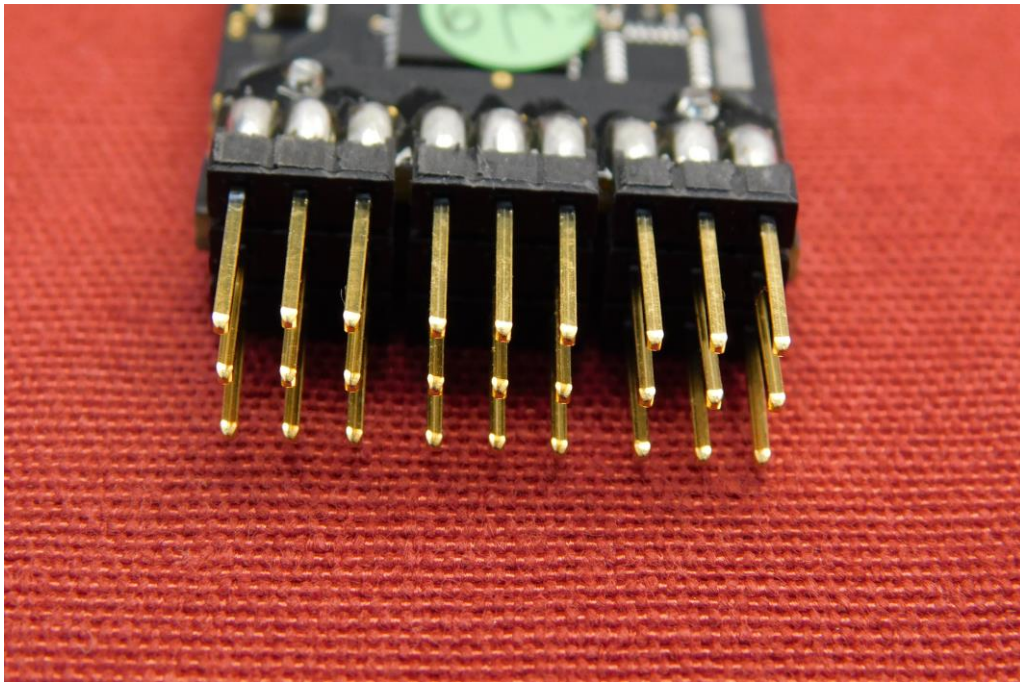
Picture 2: RF module in housing – bottom view



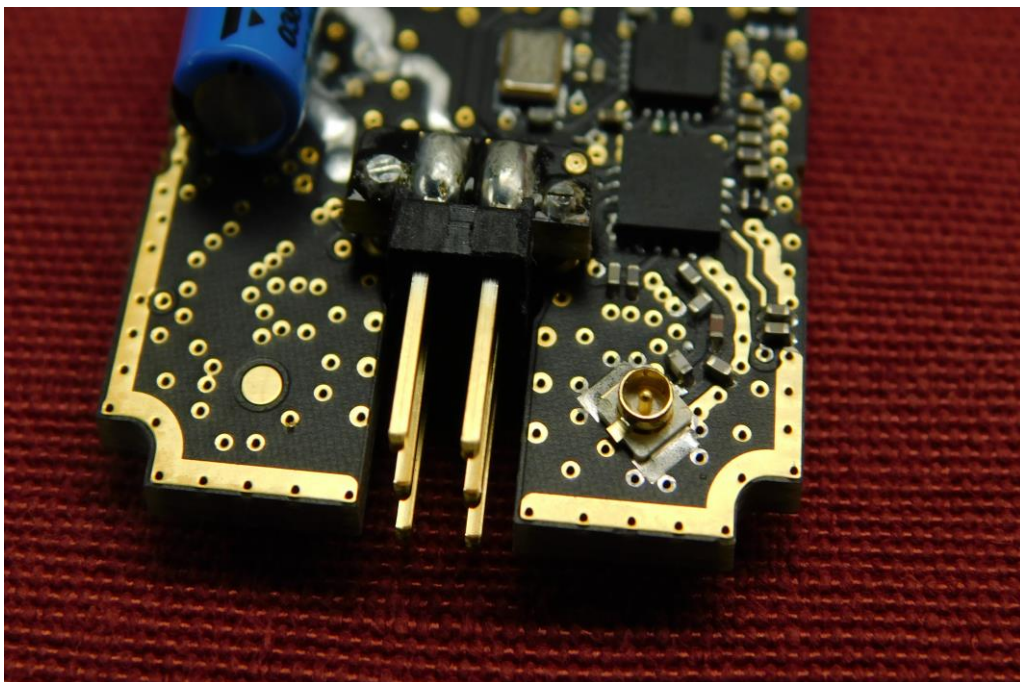
Picture 3: RF module – bottom view



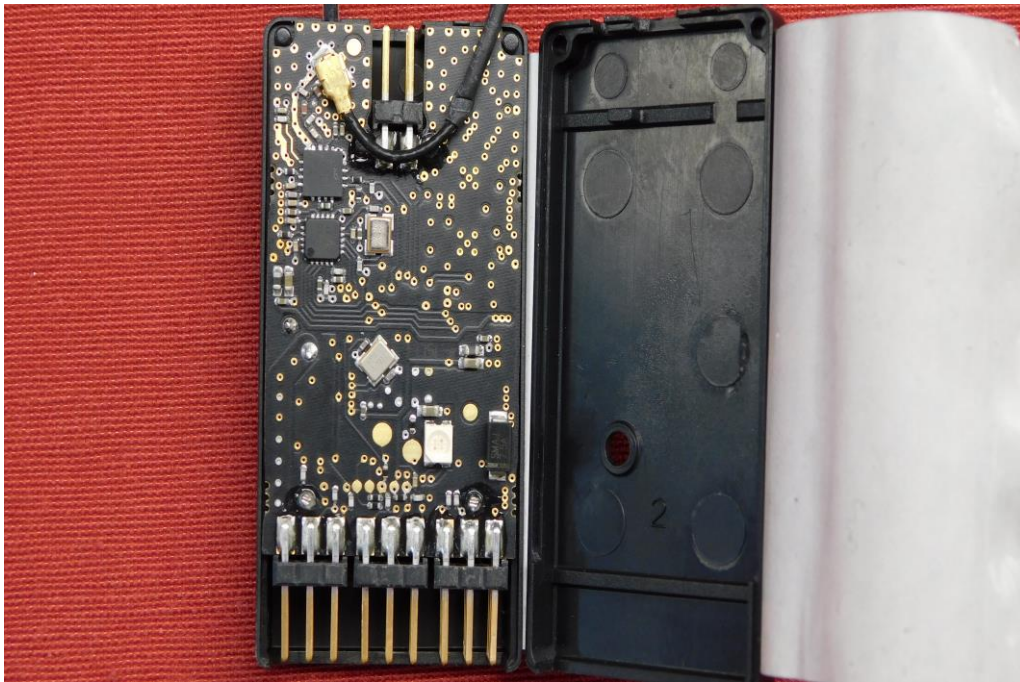
Picture 4: RF module – top view



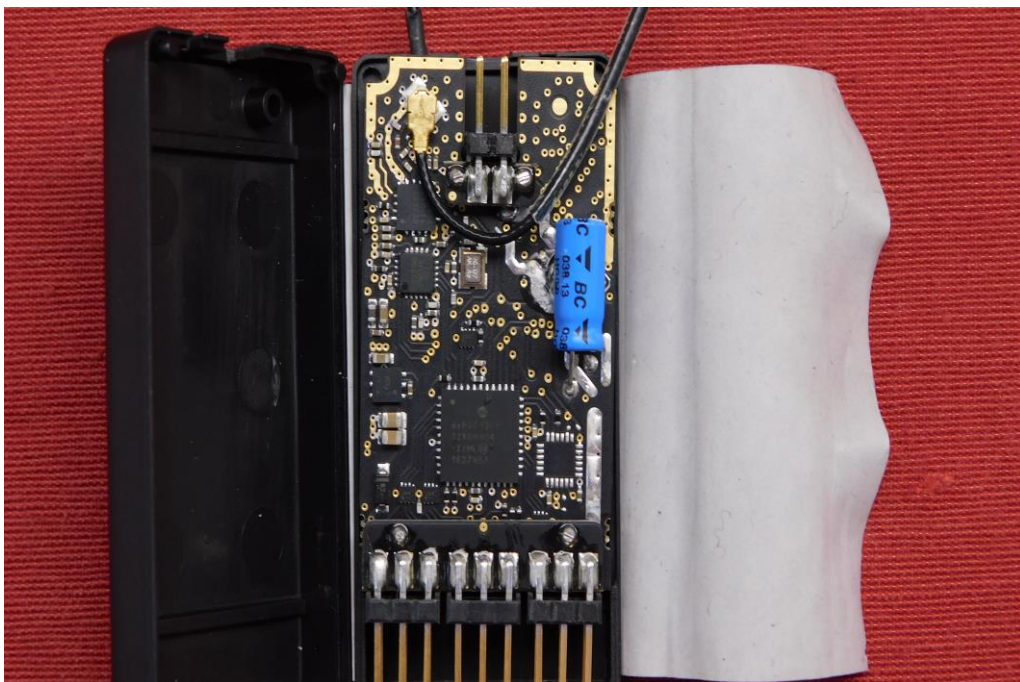
Picture 5: Detailed view of pins at the bottom of the EUT



Picture 6: Detailed view of pins at the top of the EUT with antenna connector



Picture 7: Opened EUT with antenna – top view



Picture 8: Opened EUT with antenna – bottom view