


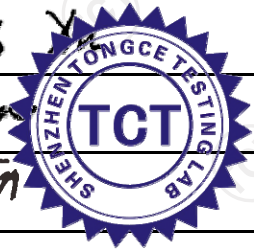


TEST REPORT

FCC ID..... :	2ASCK-GW14	
Test Report No..... :	TCT211214E003	
Date of issue..... :	Dec. 23, 2021	
Testing laboratory	SHENZHEN TONGCE TESTING LAB	
Testing location/ address:	TCT Testing Industrial Park Fuqiao 5th Industrial Zone, Fuhai Street, Bao'an District Shenzhen, Guangdong, 518103, People's Republic of China	
Applicant's name..... :	Dongguan Green Power One Co., Ltd	
Address..... :	No.26, Hongyun Street, Qingxi Town, Dongguan, China	
Manufacturer's name ... :	Dongguan Green Power One Co., Ltd	
Address..... :	No.26, Hongyun Street, Qingxi Town, Dongguan, China	
Standard(s)	FCC CFR Title 47 Part 15 Subpart C	
Test item description	Lamp w/wireless charger and pen holder	
Trade Mark	ENERGIZER	
Model/Type reference..... :	ENZ1001-BLK, GW14	
Rating(s)	Input: DC 5V/DC 9V Output: 5W/7.5W/10W	
Date of receipt of test item	Dec. 14, 2021	
Date (s) of performance of test..... :	Dec. 14, 2021 - Dec. 23, 2021	
Tested by (+signature) ... :	Brews XU	
Check by (+signature).... :	Beryl ZHAO	
Approved by (+signature):	Tomsin	



General disclaimer:

This report shall not be reproduced except in full, without the written approval of SHENZHEN TONGCE TESTING LAB. This document may be altered or revised by SHENZHEN TONGCE TESTING LAB personnel only, and shall be noted in the revision section of the document. The test results in the report only apply to the tested sample.

Table of Contents

1. General Product Information	3
1.1. EUT description	3
1.2. Model(s) list.....	3
2. Test Result Summary	4
3. General Information.....	5
3.1. Test environment and mode.....	5
3.2. Description of Support Units.....	5
4. Facilities and Accreditations	6
4.1. Facilities	6
4.2. Location	6
4.3. Measurement Uncertainty.....	6
5. Test Results and Measurement Data	7
5.1. Antenna requirement	7
5.2. Conducted Emission.....	8
5.3. Radiated Spurious Emission Measurement.....	12
Appendix A: Photographs of Test Setup	
Appendix B: Photographs of EUT	

1. General Product Information

1.1.EUT description

Test item description	Lamp w/wireless charger and pen holder
Model/Type reference.....	ENZ1001-BLK
Sample Number.....	TCT211214E003-0101
Operation Frequency	113.14kHz - 146.15kHz
Modulation Technology	Load modulation
Antenna Type.....	Inductive loop coil Antenna
Rating(s)	Input: DC 5V/DC 9V Output: 5W/7.5W/10W

Note: The antenna gain listed in this report is provided by applicant, and the test laboratory is not responsible for this parameter.

1.2.Model(s) list

No.	Model No.	Tested with
1	ENZ1001-BLK	<input checked="" type="checkbox"/>
Other models	GW14	<input type="checkbox"/>

Note: ENZ1001-BLK is tested model, other models are derivative models. The models are identical in circuit and PCB layout, only different on the model names. So the test data of ENZ1001-BLK can represent the remaining models.

2. Test Result Summary

Requirement	CFR 47 Section	Result
Antenna requirement	§15.203	PASS
AC Power Line Conducted Emission	§15.207	PASS
Spurious Emission	§15.209(a)(f)	PASS

Note:

1. PASS: Test item meets the requirement.
2. Fail: Test item does not meet the requirement.
3. N/A: Test case does not apply to the test object.
4. The test result judgment is decided by the limit of test standard.

3. General Information

3.1. Test environment and mode

Operating Environment:		
Condition	Conducted Emission	Radiated Emission
Temperature:	25.0 °C	24.9 °C
Humidity:	55 % RH	53 % RH
Atmospheric Pressure:	1010 mbar	1010 mbar
Test Mode:		
Engineering mode:	Wireless charging	
<p>The sample was placed 0.8m & 1.5m for the measurement below & above 1GHz above the ground plane of 3m chamber. Measurements in both horizontal and vertical polarities were performed. During the test, each emission was maximized by: having the EUT continuously working, investigated all operating modes, rotated about all 3 axis (X, Y & Z) and considered typical configuration to obtain worst position, manipulating interconnecting cables, rotating the turntable, varying antenna height from 1m to 4m in both horizontal and vertical polarizations. The emissions worst-case(Z axis) are shown in Test Results of the following pages.</p>		

3.2. Description of Support Units

The EUT has been tested as an independent unit together with other necessary accessories or support units. The following support units or accessories were used to form a representative test configuration during the tests.

Equipment	Model No.	Serial No.	FCC ID	Trade Name
Mobile Phone	SM-G9350	R28HA2ER3GT	/	SAMSUNG
Adapter	EP-TA20CBC	R37HAEY0DT1RT3	/	SAMSUNG

Note:

1. All the equipment/cables were placed in the worst-case configuration to maximize the emission during the test.
2. Grounding was established in accordance with the manufacturer's requirements and conditions for the intended use.

4. Facilities and Accreditations

4.1. Facilities

The test facility is recognized, certified, or accredited by the following organizations:

- FCC - Registration No.: 645098
SHENZHEN TONGCE TESTING LAB
Designation Number: CN1205

The testing lab has been registered and fully described in a report with the (FCC) Federal Communications Commission. The acceptance letter from the FCC is maintained in our files.

- IC - Registration No.: 10668A-1
SHENZHEN TONGCE TESTING LAB
CAB identifier: CN0031

The testing lab has been registered by Certification and Engineering Bureau of Industry Canada for radio equipment testing.

4.2. Location

SHENZHEN TONGCE TESTING LAB

Address: TCT Testing Industrial Park Fuqiao 5th Industrial Zone, Fuhai Street, Bao'an District Shenzhen, Guangdong, 518103, People's Republic of China

TEL: +86-755-27673339

4.3. Measurement Uncertainty

The reported uncertainty of measurement $y \pm U$, where expanded uncertainty U is based on a standard uncertainty multiplied by a coverage factor of $k=2$, providing a level of confidence of approximately 95 %.

No.	Item	MU
1	Conducted Emission	± 3.10 dB
2	RF power, conducted	± 0.12 dB
3	Spurious emissions, conducted	± 0.11 dB
4	All emissions, radiated(<1 GHz)	± 4.56 dB
5	All emissions, radiated(1 GHz - 18 GHz)	± 4.22 dB
6	All emissions, radiated(18 GHz- 40 GHz)	± 4.36 dB

5. Test Results and Measurement Data

5.1. Antenna requirement

Standard requirement:

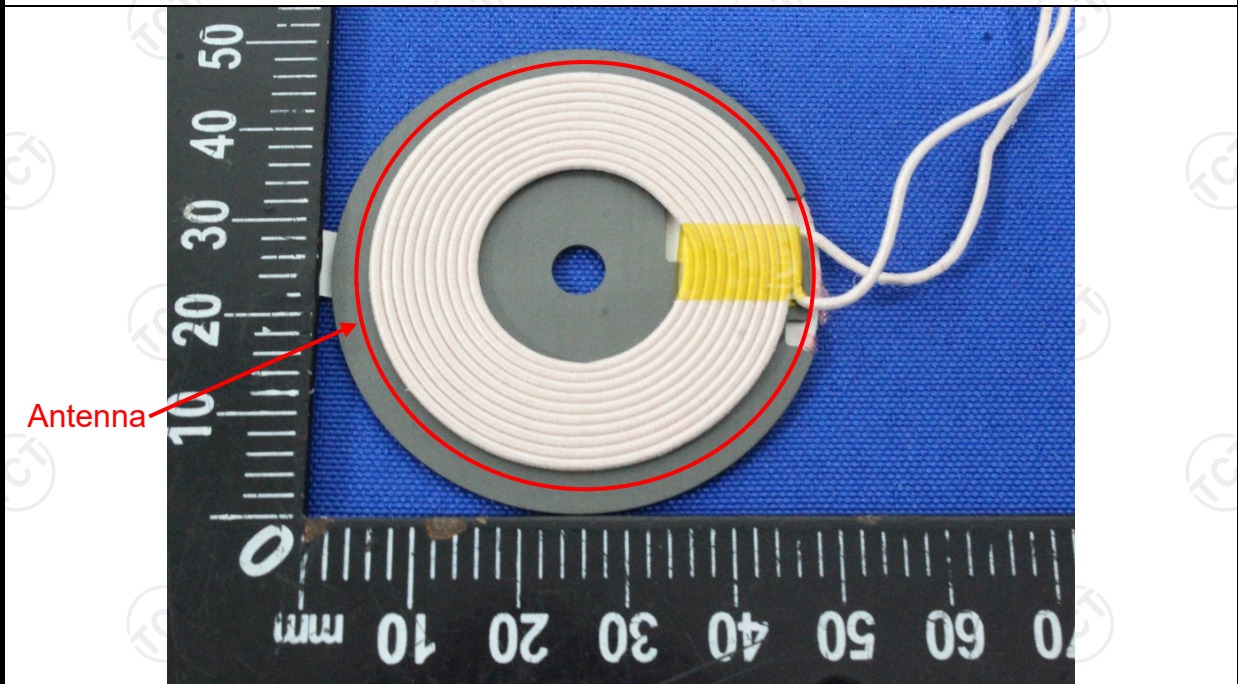
FCC Part15 C Section 15.203

15.203 requirement:

An intentional radiator shall be designed to ensure that no antenna other than that furnished by the responsible party shall be used with the device. The use of a permanently attached antenna or of an antenna that uses a unique coupling to the intentional radiator, the manufacturer may design the unit so that a broken antenna can be replaced by the user, but the use of a standard antenna jack or electrical connector is prohibited.

E.U.T Antenna:

The antenna is inductive loop coil antenna which permanently attached.



5.2. Conducted Emission

5.2.1. Test Specification

Test Requirement:	FCC Part15 C Section 15.207														
Test Method:	ANSI C63.10:2013														
Frequency Range:	150 kHz to 30 MHz														
Receiver setup:	RBW=9 kHz, VBW=30 kHz, Sweep time=auto														
Limits:	<table border="1"> <thead> <tr> <th rowspan="2">Frequency range (MHz)</th> <th colspan="2">Limit (dBuV)</th> </tr> <tr> <th>Quasi-peak</th> <th>Average</th> </tr> </thead> <tbody> <tr> <td>0.15-0.5</td> <td>66 to 56*</td> <td>56 to 46*</td> </tr> <tr> <td>0.5-5</td> <td>56</td> <td>46</td> </tr> <tr> <td>5-30</td> <td>60</td> <td>50</td> </tr> </tbody> </table>	Frequency range (MHz)	Limit (dBuV)		Quasi-peak	Average	0.15-0.5	66 to 56*	56 to 46*	0.5-5	56	46	5-30	60	50
Frequency range (MHz)	Limit (dBuV)														
	Quasi-peak	Average													
0.15-0.5	66 to 56*	56 to 46*													
0.5-5	56	46													
5-30	60	50													
Test Setup:	<p><i>Remark:</i> E.U.T: Equipment Under Test LISN: Line Impedance Stabilization Network Test table height=0.8m</p>														
Test Mode:	Refer to section 3.1 for details														
Test Procedure:	<ol style="list-style-type: none"> 1. The E.U.T is connected to an adapter through a line impedance stabilization network (L.I.S.N.). This provides a 50ohm/50uH coupling impedance for the measuring equipment. 2. The peripheral devices are also connected to the main power through a LISN that provides a 50ohm/50uH coupling impedance with 50ohm termination. (Please refer to the block diagram of the test setup and photographs). 3. Both sides of A.C. line are checked for maximum conducted interference. In order to find the maximum emission, the relative positions of equipment and all of the interface cables must be changed according to ANSI C63.10: 2013 on conducted measurement. 														
Test Result:	PASS														

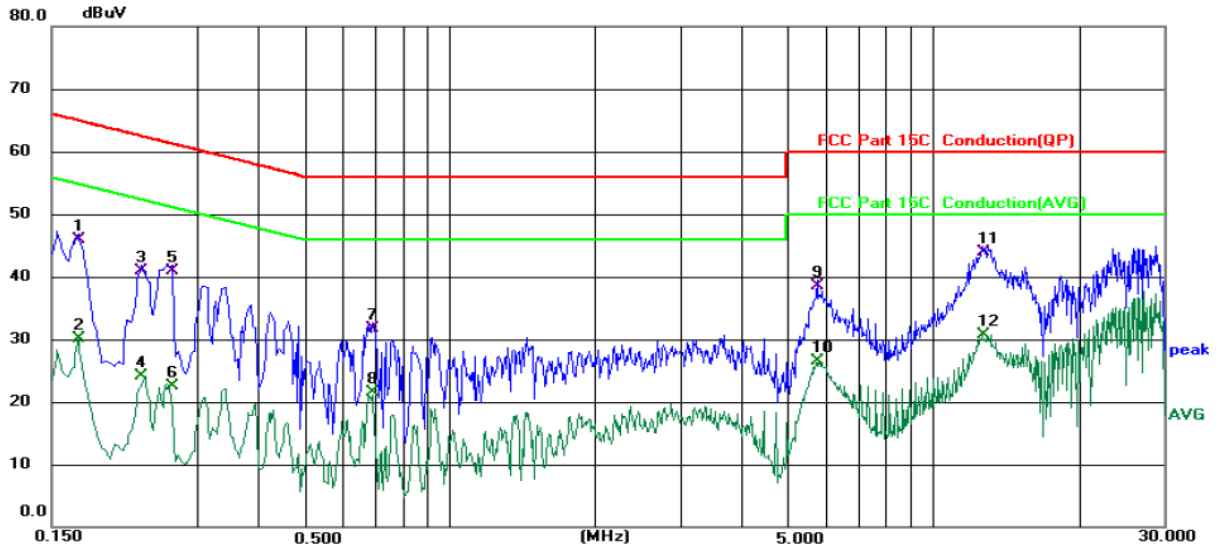
5.2.2. Test Instruments

Conducted Emission Shielding Room Test Site (843)				
Equipment	Manufacturer	Model	Serial Number	Calibration Due
EMI Test Receiver	R&S	ESCI3	100898	Jul. 07, 2022
Line Impedance Stabilisation Newtork(LISN)	Schwarzbeck	NSLK 8126	8126453	Mar. 11, 2022
Line-5	TCT	CE-05	N/A	Jul. 07, 2022
EMI Test Software	Shurple Technology	EZ-EMC	N/A	N/A

5.2.3. Test data

Please refer to following diagram for individual

Conducted Emission on Line Terminal of the power line (150 kHz to 30MHz)



Site 844 Shielding Room Phase: **L1** Temperature: 25 (°C) Humidity: 55 %

Limit: FCC Part 15C Conduction(QP) Power: DC 5 V(Adapter Input AC 120 V/60 Hz)

No.	Mk.	Freq. MHz	Reading Level dBuV	Correct Factor dB	Measure- ment dBuV	Limit dBuV	Over dB	Detector	Comment
1		0.1700	36.22	9.59	45.81	64.96	-19.15	QP	
2		0.1700	20.56	9.59	30.15	54.96	-24.81	AVG	
3		0.2300	31.56	9.36	40.92	62.45	-21.53	QP	
4		0.2300	14.70	9.36	24.06	52.45	-28.39	AVG	
5		0.2660	31.49	9.34	40.83	61.24	-20.41	QP	
6		0.2660	13.11	9.34	22.45	51.24	-28.79	AVG	
7		0.6900	22.47	9.18	31.65	56.00	-24.35	QP	
8		0.6900	12.37	9.18	21.55	46.00	-24.45	AVG	
9		5.7580	29.01	9.56	38.57	60.00	-21.43	QP	
10		5.7580	16.86	9.56	26.42	50.00	-23.58	AVG	
11	*	12.7060	34.25	9.64	43.89	60.00	-16.11	QP	
12		12.7060	21.04	9.64	30.68	50.00	-19.32	AVG	

Note:

Freq. = Emission frequency in MHz

Reading level (dBuV) = Receiver reading

Corr. Factor (dB) = LISN factor + Cable loss

Measurement (dBuV) = Reading level (dBuV) + Corr. Factor (dB)

Limit (dBuV) = Limit stated in standard

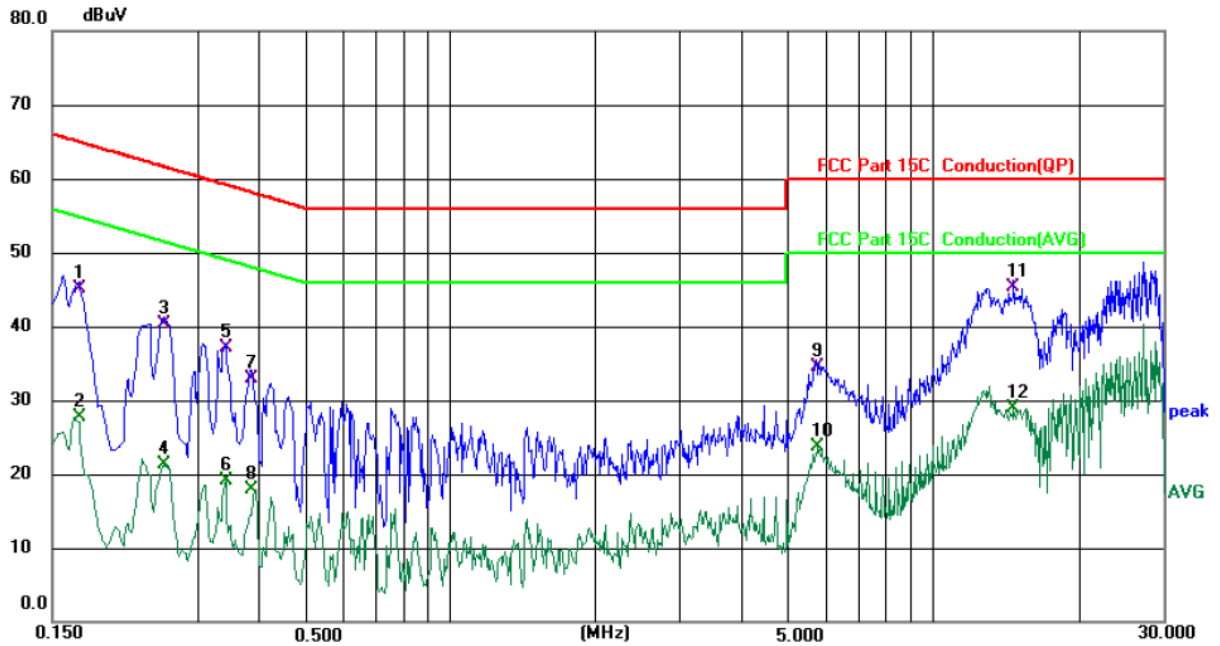
Margin (dB) = Measurement (dBuV) – Limits (dBuV)

Q.P. =Quasi-Peak

AVG =average

* is meaning the worst frequency has been tested in the frequency range 150 kHz to 30MHz

Conducted Emission on Neutral Terminal of the power line (150 kHz to 30MHz)



Site 844 Shielding Room Phase: *N* Temperature: 25 (°C) Humidity: 55 %

Limit: FCC Part 15C Conduction(QP) Power: DC 5 V(Adapter Input AC 120 V/60 Hz)

No.	Mk.	Freq. MHz	Reading Level dBuV	Correct Factor dB	Measure- ment dBuV	Limit dBuV	Over dB	Detector	Comment
1		0.1700	35.53	9.56	45.09	64.96	-19.87	QP	
2		0.1700	18.19	9.56	27.75	54.96	-27.21	AVG	
3		0.2540	31.02	9.33	40.35	61.63	-21.28	QP	
4		0.2540	11.93	9.33	21.26	51.63	-30.37	AVG	
5		0.3420	27.82	9.31	37.13	59.15	-22.02	QP	
6		0.3420	9.82	9.31	19.13	49.15	-30.02	AVG	
7		0.3860	23.56	9.27	32.83	58.15	-25.32	QP	
8		0.3860	8.63	9.27	17.90	48.15	-30.25	AVG	
9		5.7340	25.06	9.50	34.56	60.00	-25.44	QP	
10		5.7340	14.20	9.50	23.70	50.00	-26.30	AVG	
11	*	14.6980	35.69	9.67	45.36	60.00	-14.64	QP	
12		14.6980	19.24	9.67	28.91	50.00	-21.09	AVG	

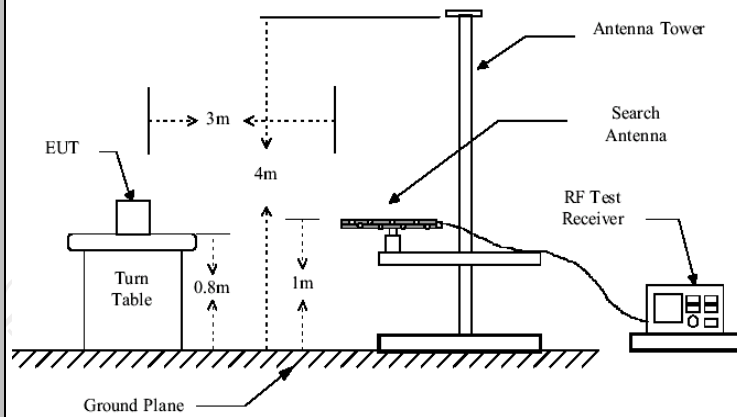
Note:

- Freq. = Emission frequency in MHz
- Reading level (dBμV) = Receiver reading
- Corr. Factor (dB) = LISN factor + Cable loss
- Measurement (dBμV) = Reading level (dBμV) + Corr. Factor (dB)
- Limit (dBμV) = Limit stated in standard
- Margin (dB) = Measurement (dBμV) – Limits (dBμV)
- Q.P. =Quasi-Peak AVG =average
- * is meaning the worst frequency has been tested in the frequency range 150 kHz to 30MHz.

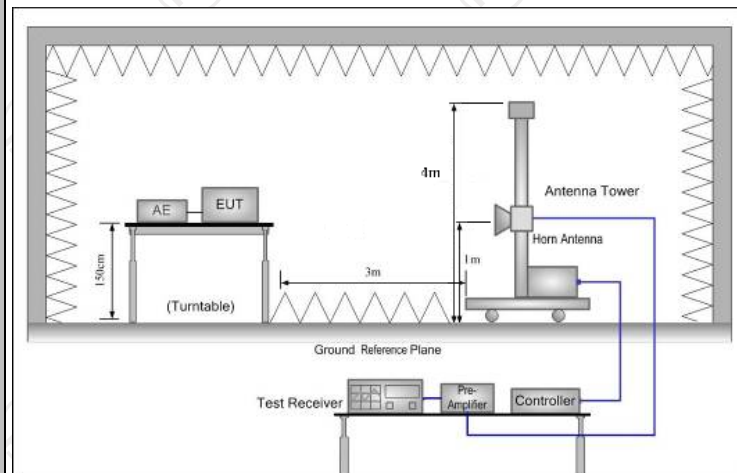
5.3. Radiated Spurious Emission Measurement

5.3.1. Test Specification

Test Requirement:	FCC Part15 C Section 15.209				
Test Method:	ANSI C63.10: 2013				
Frequency Range:	9 kHz to 25 GHz				
Measurement Distance:	3 m				
Antenna Polarization:	Horizontal & Vertical				
Operation mode:	Refer to item 3.1				
Receiver Setup:	Frequency	Detector	RBW	VBW	Remark
	9kHz- 150kHz	Quasi-peak	200Hz	1kHz	Quasi-peak Value
	150kHz- 30MHz	Quasi-peak	9kHz	30kHz	Quasi-peak Value
	30MHz-1GHz	Quasi-peak	120KHz	300KHz	Quasi-peak Value
	Above 1GHz	Peak	1MHz	3MHz	Peak Value
		Peak	1MHz	10Hz	Average Value
Limit:	Frequency	Field Strength (microvolts/meter)	Measurement Distance (meters)		
	0.009-0.490	2400/F(KHz)	300		
	0.490-1.705	24000/F(KHz)	30		
	1.705-30	30	30		
	30-88	100	3		
	88-216	150	3		
	216-960	200	3		
	Above 960	500	3		
	Frequency	Field Strength (microvolts/meter)	Measurement Distance (meters)	Detector	
	Above 1GHz	500	3	Average	
	5000	3	Peak		
Test setup:	For radiated emissions below 30MHz				
	<p>30MHz to 1GHz</p>				



Above 1GHz



Test Procedure:

1. For the radiated emission test below 1GHz:
The EUT was placed on a turntable with 0.8 meter above ground. The EUT was set 3 meters from the interference receiving antenna, which was mounted on the top of a variable height antenna tower. The EUT was arranged to its worst case and then tune the antenna tower (from 1 m to 4 m) and turntable (from 0 degree to 360 degrees) to find the maximum reading. A pre-amp and a high PASS filter are used for the test in order to get better signal level.
- For the radiated emission test above 1GHz:
Place the measurement antenna on a turntable with 1.5 meter above ground, which is away from each area of the EUT determined to be a source of emissions at the specified measurement distance, while keeping the measurement antenna aimed at the source of emissions at each frequency of significant emissions, with polarization oriented for maximum response. The measurement antenna may have to be higher or lower than the EUT, depending on the radiation pattern of the emission and staying aimed at the emission source for receiving the maximum signal. The final

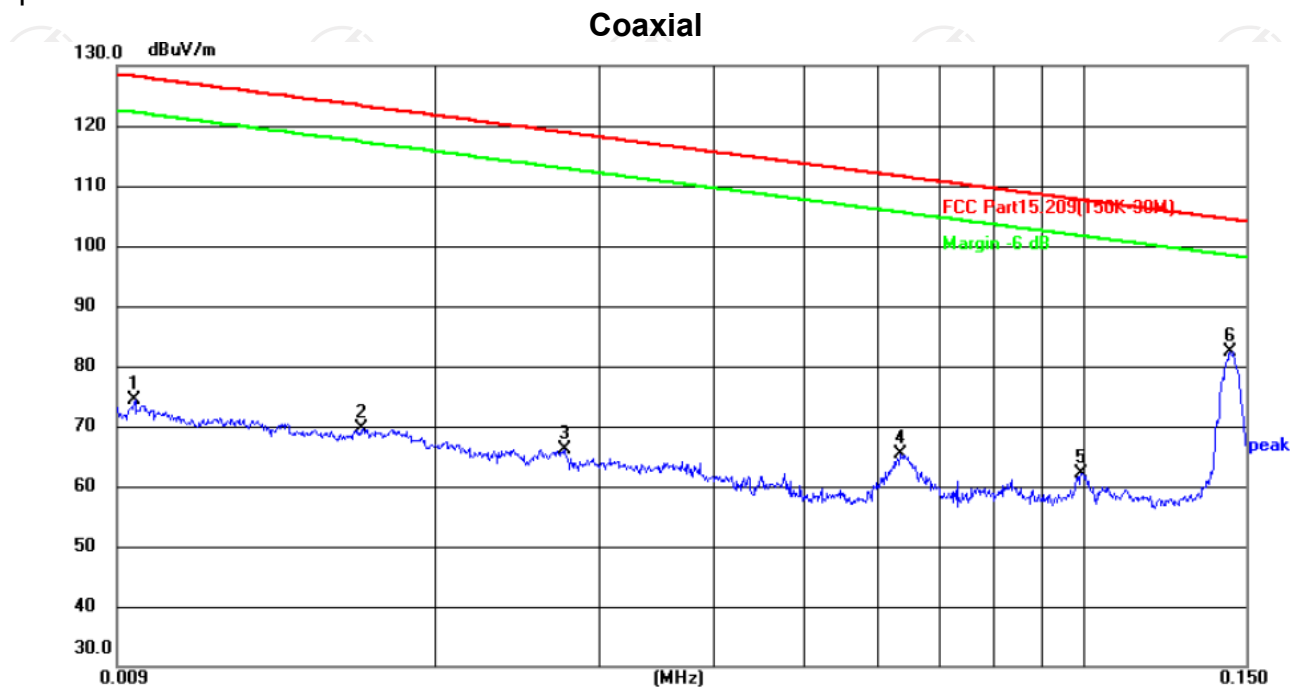
	<p>measurement antenna elevation shall be that which maximizes the emissions. The measurement antenna elevation for maximum emissions shall be restricted to a range of heights of from 1 m to 4 m above the ground or reference ground plane.</p> <p>2. Corrected Reading: Antenna Factor + Cable Loss + Read Level - Preamp Factor = Level</p> <p>3. For measurement below 1GHz, If the emission level of the EUT measured by the peak detector is 3 dB lower than the applicable limit, the peak emission level will be reported. Otherwise, the emission measurement will be repeated using the quasi-peak detector and reported.</p> <p>4. Use the following spectrum analyzer settings:</p> <p>(1) Span shall wide enough to fully capture the emission being measured;</p> <p>(2) Set RBW=120 kHz for $f < 1$ GHz; VBW \geq RBW; Sweep = auto; Detector function = peak; Trace = max hold;</p> <p>(3) Set RBW = 1 MHz, VBW= 3MHz for $f \geq 1$ GHz for peak measurement.</p> <p>For average measurement: VBW = 10 Hz, when duty cycle is no less than 98 percent. VBW $\geq 1/T$, when duty cycle is less than 98 percent where T is the minimum transmission duration over which the transmitter is on and is transmitting at its maximum power control level for the tested mode of operation.</p>
Test mode:	Refer to section 3.1 for details
Test results:	PASS

5.3.2. Test Instruments

Radiated Emission Test Site (966)				
Name of Equipment	Manufacturer	Model	Serial Number	Calibration Due
EMI Test Receiver	R&S	ESIB7	100197	Jul. 07, 2022
Spectrum Analyzer	R&S	FSQ40	200061	Jul. 07, 2022
Pre-amplifier	SKET	LNPA_0118G-45	SK2021012102	Mar. 11, 2022
Pre-amplifier	SKET	LNPA_1840G-50	SK202109203500	Apr. 08, 2022
Pre-amplifier	HP	8447D	2727A05017	Jul. 07, 2022
Loop antenna	ZHINAN	ZN30900A	12024	Sep. 05, 2022
Broadband Antenna	Schwarzbeck	VULB9163	340	Sep. 04, 2022
Horn Antenna	Schwarzbeck	BBHA 9120D	631	Sep. 04, 2022
Horn Antenna	Schwarzbeck	BBHA 9170	00956	Apr. 10, 2023
Antenna Mast	Keleto	RE-AM	N/A	N/A
Coaxial cable	SKET	RC_DC18G-N	N/A	Apr. 08, 2022
Coaxial cable	SKET	RC-DC18G-N	N/A	Apr. 08, 2022
Coaxial cable	SKET	RC-DC40G-N	N/A	Jul. 07, 2022
EMI Test Software	Shurple Technology	EZ-EMC	N/A	N/A

5.3.3. Test Data

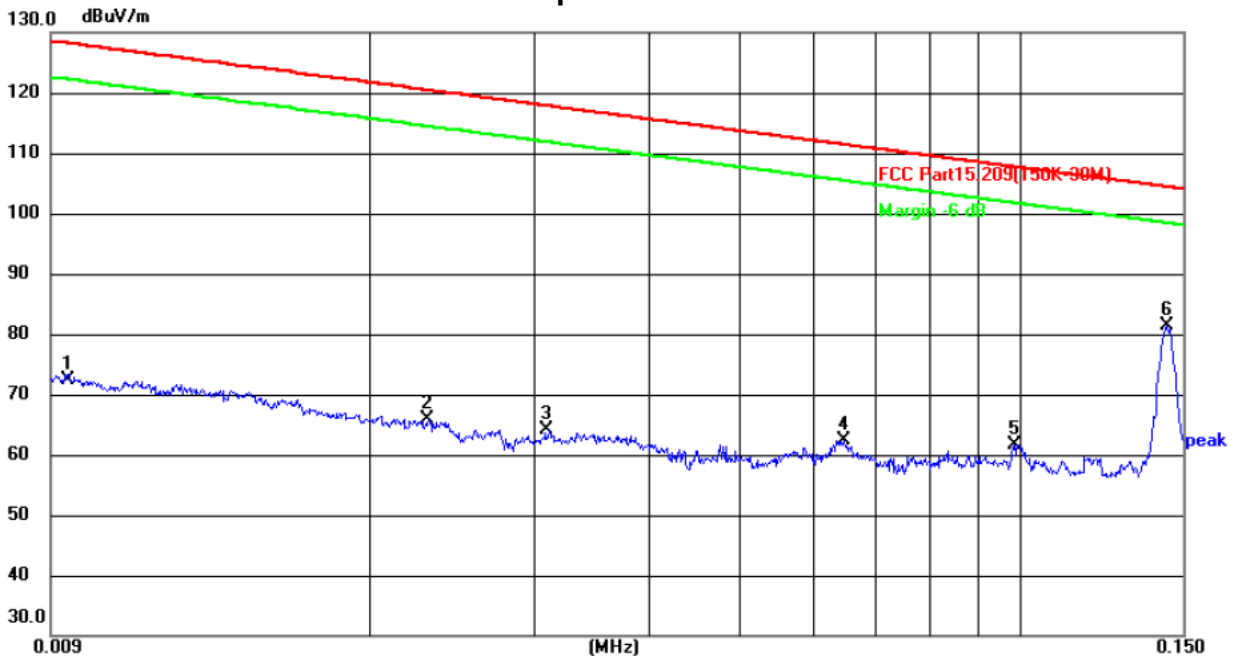
Spurious emission: 9KHz –150KHz



Site: Polarization: **Vertical** Temperature: 25(°C)
 Limit: FCC Part15.209(150K-30M) Power: DC 9 V Humidity: 55 %

No.	Frequency (MHz)	Reading (dBuV)	Factor (dB/m)	Level (dBuV/m)	Limit (dBuV/m)	Margin (dB)	Detector	P/F	Remark
1	0.0094	54.33	20.05	74.38	128.14	-53.76	peak	P	
2	0.0165	49.43	20.09	69.52	123.26	-53.74	peak	P	
3	0.0274	45.88	20.15	66.03	118.85	-52.82	peak	P	
4	0.0635	45.19	20.26	65.45	111.55	-46.10	peak	P	
5	0.0995	41.32	20.79	62.11	107.65	-45.54	peak	P	
6 *	0.1444	61.40	20.86	82.26	104.41	-22.15	peak	P	

Coplanar



Site

Polarization: **Horizontal**

Temperature: 25(°C)

Limit: FCC Part15.209(150K-30M)

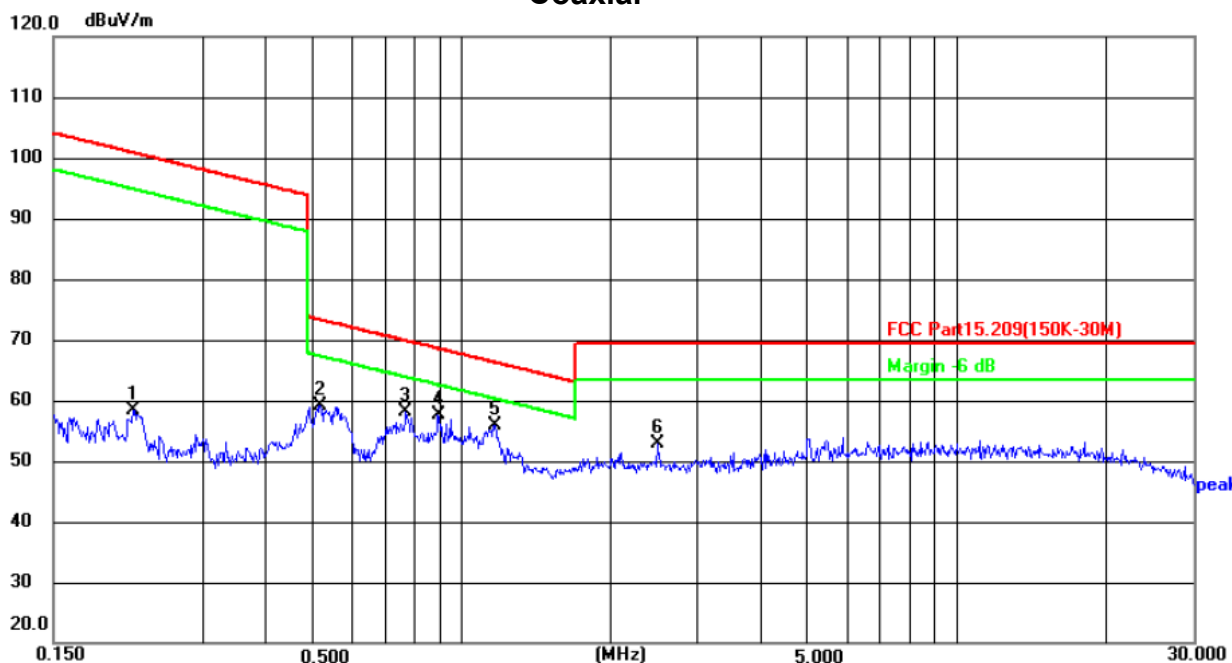
Power: DC 9 V

Humidity: 55 %

No.	Frequency (MHz)	Reading (dBuV)	Factor (dB/m)	Level (dBuV/m)	Limit (dBuV/m)	Margin (dB)	Detector	P/F	Remark
1	0.0094	52.31	20.05	72.36	128.14	-55.78	peak	P	
2	0.0229	45.85	20.13	65.98	120.41	-54.43	peak	P	
3	0.0309	43.95	20.15	64.10	117.81	-53.71	peak	P	
4	0.0646	42.22	20.27	62.49	111.40	-48.91	peak	P	
5	0.0985	40.96	20.78	61.74	107.74	-46.00	peak	P	
6 *	0.1444	60.40	20.86	81.26	104.41	-23.15	peak	P	

Spurious emission: 150KHz – 30MHz

Coaxial



Site

Polarization: **Vertical**

Temperature: 25(°C)

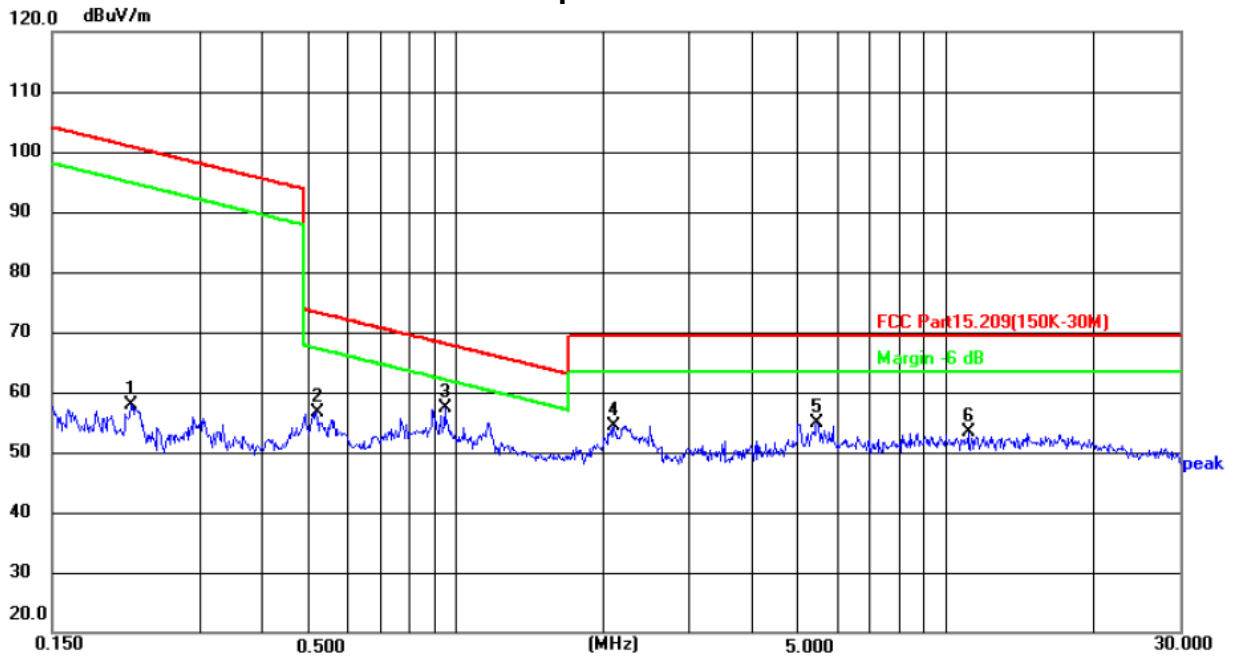
Limit: FCC Part15.209(150K-30M)

Power: DC 9 V

Humidity: 55 %

No.	Frequency (MHz)	Reading (dBuV)	Factor (dB/m)	Level (dBuV/m)	Limit (dBuV/m)	Margin (dB)	Detector	P/F	Remark
1	0.2185	37.37	20.99	58.36	100.82	-42.46	peak	P	
2	0.5196	38.00	21.20	59.20	73.29	-14.09	peak	P	
3	0.7731	36.21	21.93	58.14	69.85	-11.71	peak	P	
4	0.8968	35.25	22.30	57.55	68.56	-11.01	peak	P	
5 *	1.1688	32.91	22.91	55.82	66.27	-10.45	peak	P	
6	2.5000	27.39	25.44	52.83	69.50	-16.67	peak	P	

Coplanar



Site: Polarization: **Horizontal** Temperature: 25(°C)
 Limit: FCC Part15.209(150K-30M) Power: DC 9 V Humidity: 55 %

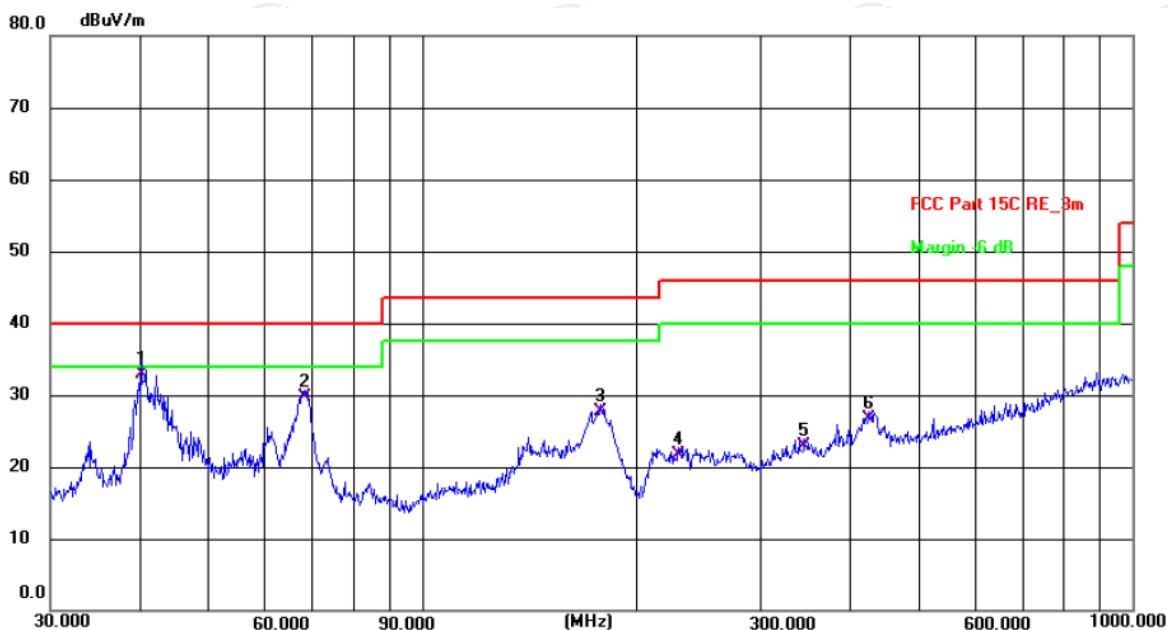
No.	Frequency (MHz)	Reading (dBuV)	Factor (dB/m)	Level (dBuV/m)	Limit (dBuV/m)	Margin (dB)	Detector	P/F	Remark
1	0.2184	36.87	20.99	57.86	100.82	-42.96	peak	P	
2	0.5195	35.50	21.20	56.70	73.29	-16.59	peak	P	
3 *	0.9506	34.85	22.45	57.30	68.06	-10.76	peak	P	
4	2.0988	29.77	24.68	54.45	69.50	-15.05	peak	P	
5	5.4618	23.56	31.43	54.99	69.50	-14.51	peak	P	
6	11.1089	10.48	42.90	53.38	69.50	-16.12	peak	P	



Spurious emission:

30MHz – 1GHz

Horizontal:



Site #2 3m Anechoic Chamber

Polarization: **Horizontal**

Temperature: 24.9(C) Humidity: 53 %

Limit: FCC Part 15C RE_3m

Power: DC 5 V(Adapter Input AC 120 V/60 Hz)

No.	Frequency (MHz)	Reading (dBuV)	Factor (dB/m)	Level (dBuV/m)	Limit (dBuV/m)	Margin (dB)	Detector	P/F	Remark
1 *	40.2757	18.90	14.00	32.90	40.00	-7.10	QP	P	
2	68.3908	18.27	11.43	29.70	40.00	-10.30	QP	P	
3	178.7584	16.36	11.44	27.80	43.50	-15.70	QP	P	
4	230.0985	9.68	12.12	21.80	46.00	-24.20	QP	P	
5	345.5952	7.56	15.34	22.90	46.00	-23.10	QP	P	
6	426.5210	8.88	17.82	26.70	46.00	-19.30	QP	P	

Vertical:



Site #2 3m Anechoic Chamber

Polarization: **Vertical**

Temperature: 24.9(C) Humidity: 53 %

Limit: FCC Part 15C RE_3m

Power: DC 5 V(Adapter Input AC 120 V/60 Hz)

No.	Frequency (MHz)	Reading (dBuV)	Factor (dB/m)	Level (dBuV/m)	Limit (dBuV/m)	Margin (dB)	Detector	P/F	Remark
1 *	33.9172	23.59	12.91	36.50	40.00	-3.50	QP	P	
2 !	39.9941	21.89	14.01	35.90	40.00	-4.10	QP	P	
3 !	59.8588	21.26	13.14	34.40	40.00	-5.60	QP	P	
4	67.9128	20.87	11.53	32.40	40.00	-7.60	QP	P	
5	133.6187	18.47	12.83	31.30	43.50	-12.20	QP	P	
6	177.5089	20.14	11.56	31.70	43.50	-11.80	QP	P	

Note:

Emission Level=Peak Reading + Correction Factor; Correction Factor= Antenna Factor + Cable loss - Pre-amplifier

Appendix A: Photographs of Test Setup

Product: Lamp w/wireless charger and pen holder

Model: ENZ1001-BLK

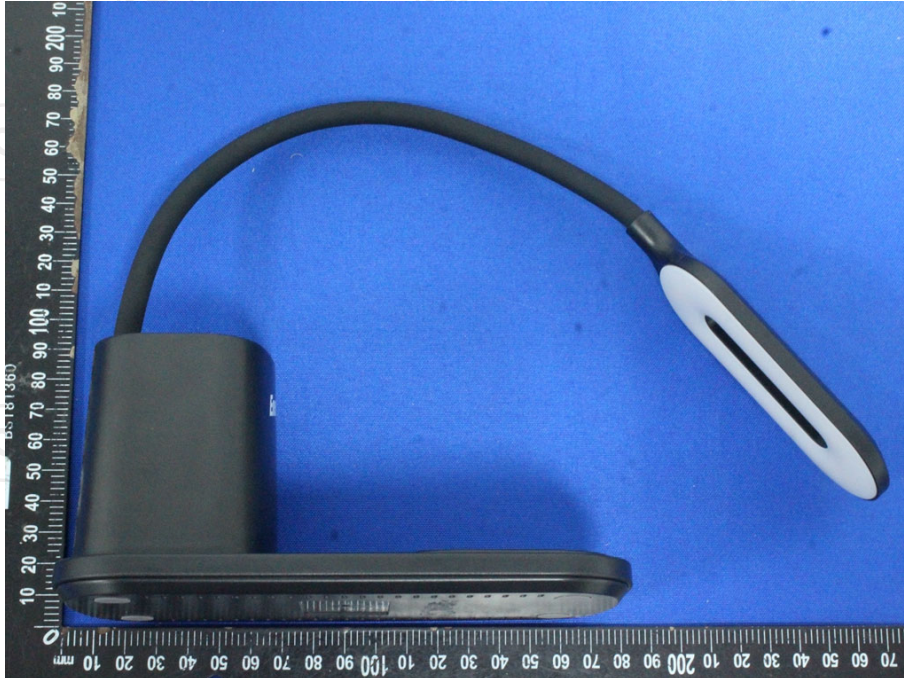
Radiated Emission



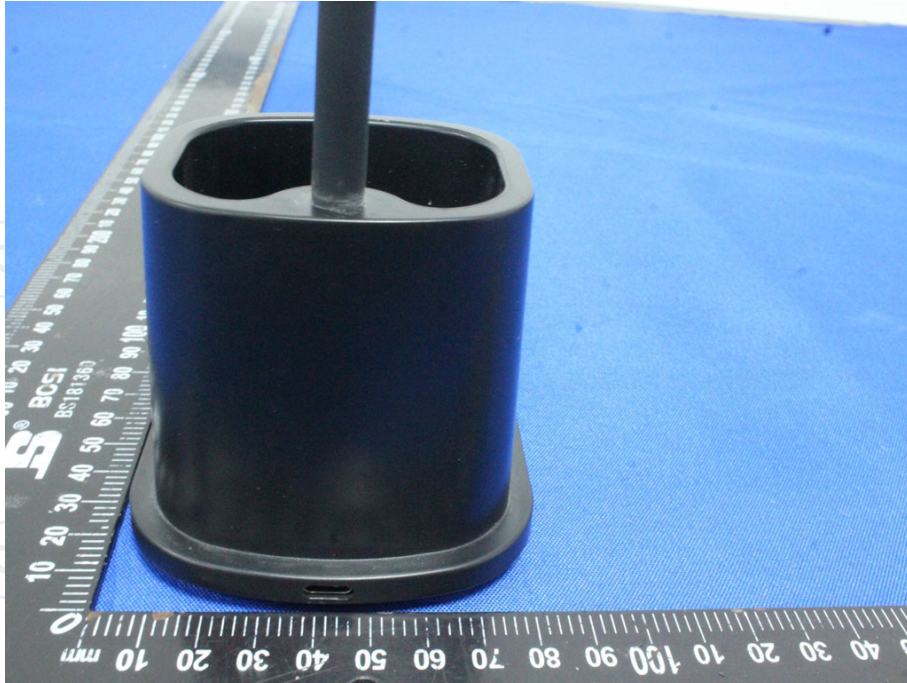
Conducted Emission



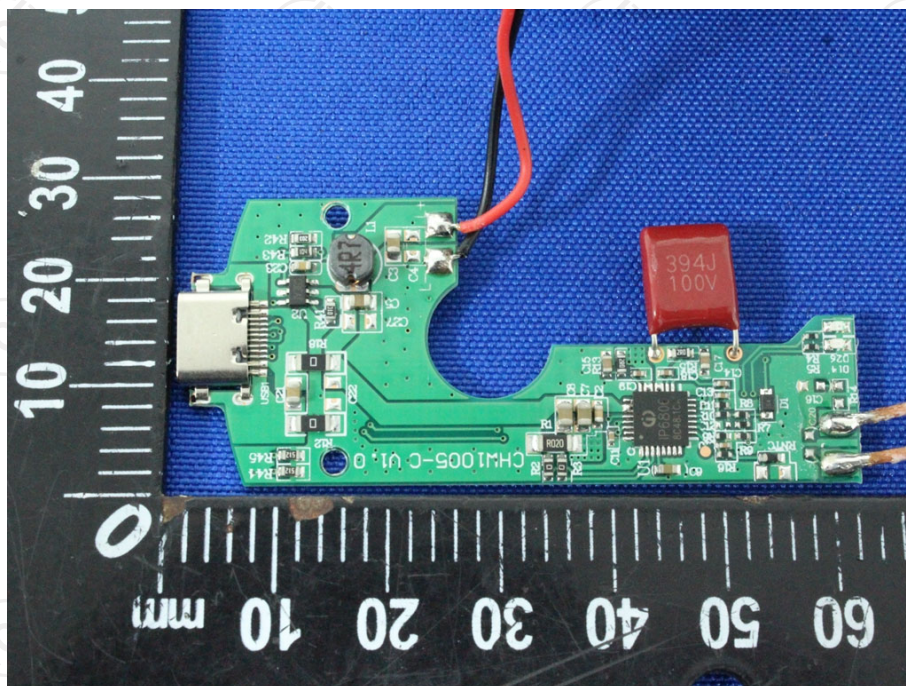
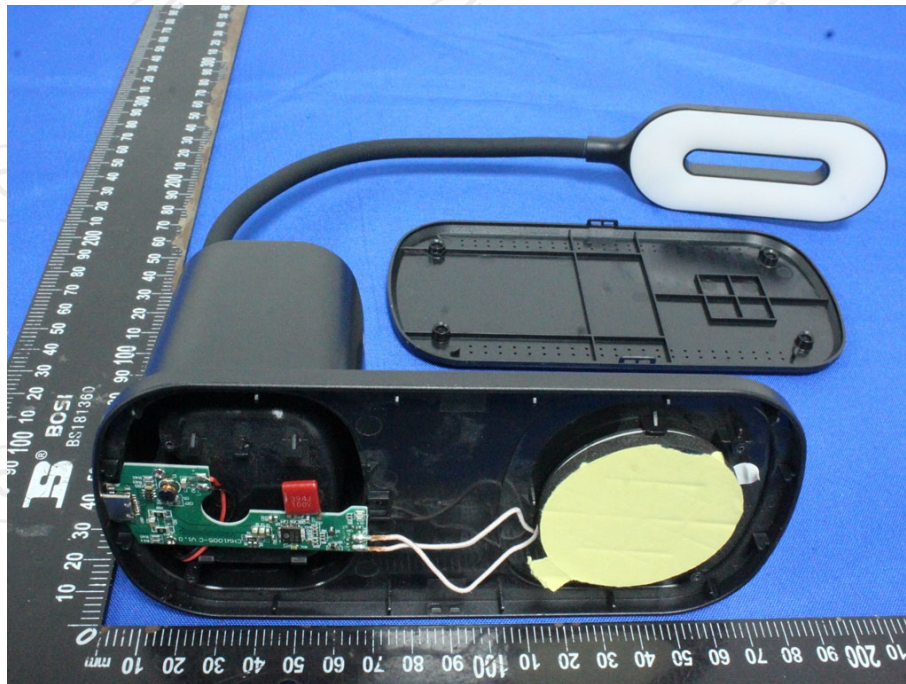
Appendix B: Photographs of EUT
Product: Lamp w/wireless charger and pen holder
Model: ENZ1001-BLK
External Photos

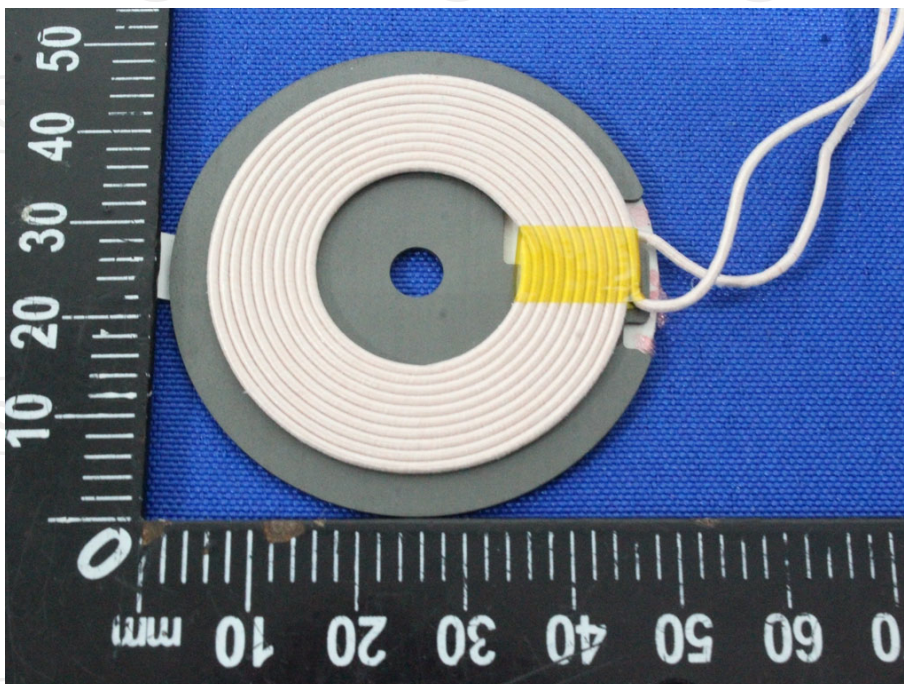
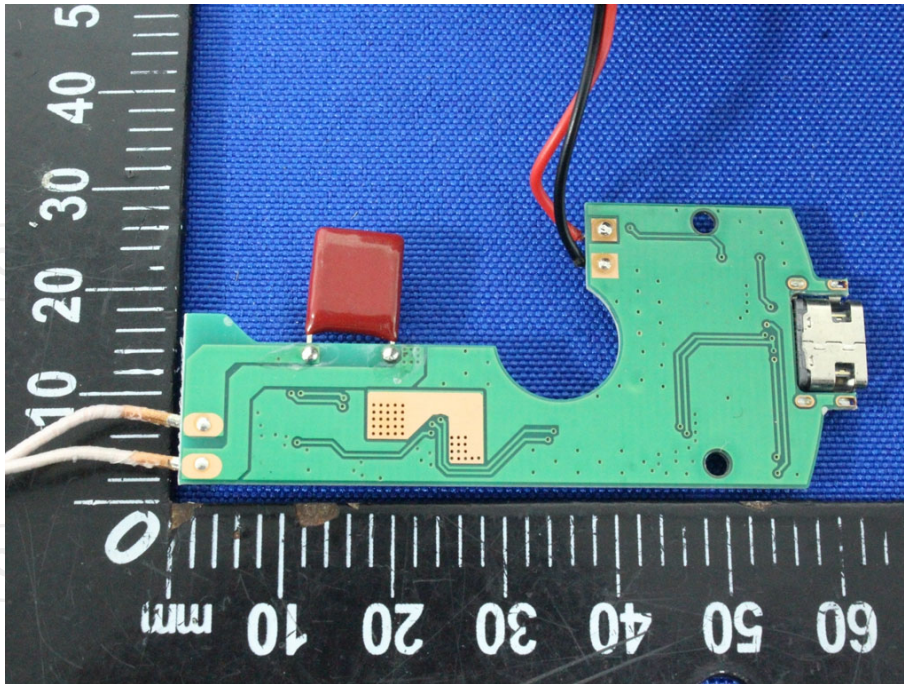


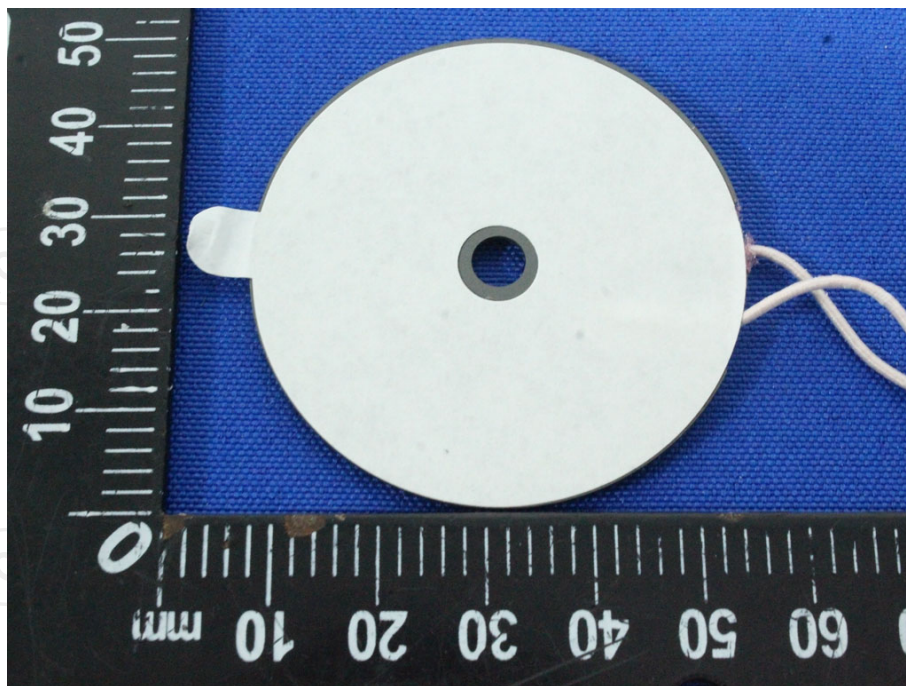




Product: Lamp w/wireless charger and pen holder
Model: ENZ1001-BLK
Internal Photos







*******END OF REPORT*******