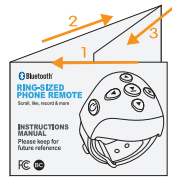


INSTRUCTIONS

DO NOT PRINT THIS LAYER

Dimensions: 3.7in (w) x 2.65in (h)
 PRINT BACK TO BACK



FOLDING INSTRUCTIONS

FRONT

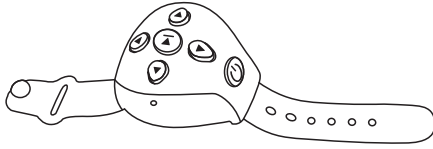
Pairing name:
 "Ring Phone Remote"

Includes:
 One (1) Ring sized phone remote
 1.03in. x 1.26in. x 0.45in.
 (2.63cm x 3.22cm x 1.16cm),
 One (1) Charging Cable 5.85in. (14.85cm),
 One (1) User Manual.

Functions:
 Scroll up and down.
 Take remote selfies and record videos.
 Turn pages on most e-book apps.
 Rechargeable battery that lasts up to 6 months on a fully charge.
 Like images and videos on most social media apps.

Charge

Charge it with DC5V Micro USB charging cable.
 During charging the indicator light in red always and turn off when it is fully charged.



Specifications:
 Bluetooth® distance: 10m
 Built-in lithium battery
 Battery capacity: 30mAh

This equipment has been tested and found to comply with the limits for a Class B digital device, pursuant to part 15 of the FCC Rules. These limits are designed to provide reasonable protection against harmful interference in a residential installation. This equipment generates, uses and can radiate radio frequency energy and, if not installed and used in accordance with the instructions, may cause harmful interference to radio communications. However, there is no guarantee that interference will not occur in a particular installation. If this equipment does cause harmful interference to radio or television reception, which can be determined by turning the equipment off and on, the user is encouraged to try to correct the interference by one or more of the following measures:

- Reorient or relocate the receiving antenna.
- Increase the separation between the equipment and receiver.
- Connect the equipment into an outlet on a circuit different from that to which the receiver is connected.
- Consult the dealer or an experienced radio/TV technician for help.

Caution: Any changes or modifications to this device not explicitly approved by manufacturer could void your authority to operate this equipment.

This device complies with part 15 of the FCC Rules. Operation is subject to the following two conditions: (1) This device may not cause harmful interference, and (2) this device must accept any interference received, including interference that may cause undesired operation.

FCC Radiation Exposure Statement
 This equipment complies with FCC radiation exposure limits set forth for an uncontrolled environment. This transmitter must not be co-located or operating in conjunction with any other antenna or transmitter.

The Bluetooth® word mark and logos are registered trademarks owned by Bluetooth SIG, Inc. and any use of such marks by "Zeikos" is under license. Other trademarks and trade names are those of their respective owners.

Distributed By: 1616 Holdings, Inc.
 701 Market Street, Suite 200
 Philadelphia, PA 19106
MADE IN CHINA

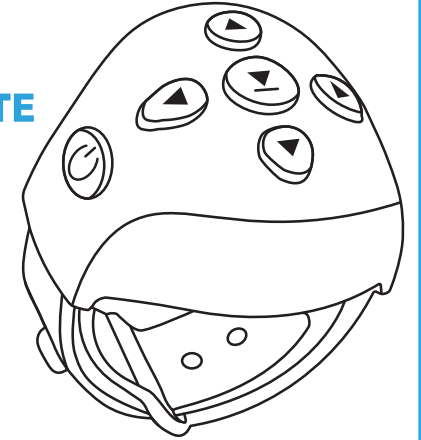


RING-SIZED PHONE REMOTE

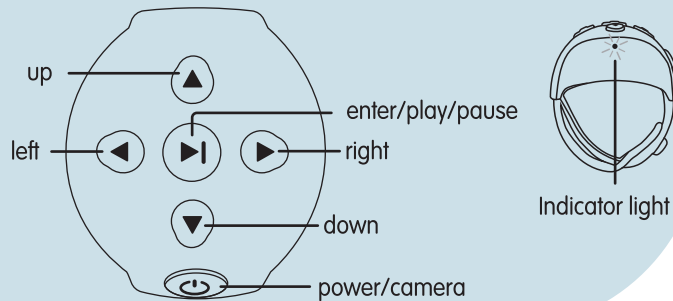
Scroll, like, record & more

INSTRUCTIONS MANUAL

Please keep for future reference



Back



POWER ON/OFF

ON: Long press the "POWER" key for 2 seconds. The indicator light will flash 1 time, the light will go off and the ring will automatically enter to standby mode.

OFF: Long press the "POWER" key for 2 seconds. The indicator light will flash 2 times, and your device will be off.

Bluetooth® connection

- Go to your device settings and turn on the Bluetooth function.
 - From the list of available devices select: "Ring Phone Remote"
 - A Bluetooth pairing request might appear on your screen go ahead and confirm the pairing.
- If the pairing is successful your phone will display "connected" on you list of Bluetooth devices.

How to use

For iPhones & iPads (iOS devices)

The AssistiveTouch function must be turned on. To turn on AssistiveTouch follow the next steps:

Settings > Accessibility > Touch > AssistiveTouch > AssistiveTouch



Camera Function

- Open your devices camera.

For most devices

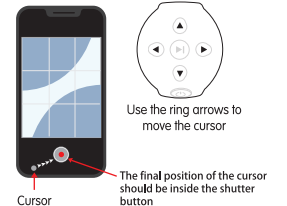
- To take photos:
 Short press "Power" key

- To record Videos:
 Short press "Power" key to start.
 Short press "Power" key to finish.

If the Ring Phone Remote doesn't work as above, please follow the instructions below.

For some devices

- 1-Long press Play button until the indicator light flashes to start the cursor adjustment.
- 2-Short press up, down, right or left button to adjust the direction of cursor to align the cursor with shutter.
- 3-Short press Play button to finish the adjustment, when the final position of the cursor is inside the shutter button.
- 4-Short press Power button to start/finish photo/video.



Low Power: When the battery voltage is lower than 3.2V, the indicator flash red light. When the battery voltage is lower than 3.0V, it will automatically power off.