

WiFi Smart Converter User Manual

Product Schematic



Function Key and Indicator Description

Short press the power button, blue indicator lights up means power on; otherwise, it's power off.

Short press the power button for about 5 seconds, blue indicator flashes rapidly (2 times/ per second) means the product begin enter into EZ(rapidly blink) mode.

Press 5s more in EZ mode, it will enter AP (Slowly blink) mode.

Technical Parameters

Maximum current: 10A

Rated voltage: 85-240V

Rated power: 2200W

Input voltage: 110-220V

Wireless Type: Wi-Fi 2.4GHz

Operating temperature: -10°C - 60 °C

Support system: Android \IOS

Connect with "Smart Life"

Use your phone to scan the QR code below or search "smart life" in application market to download and install the App

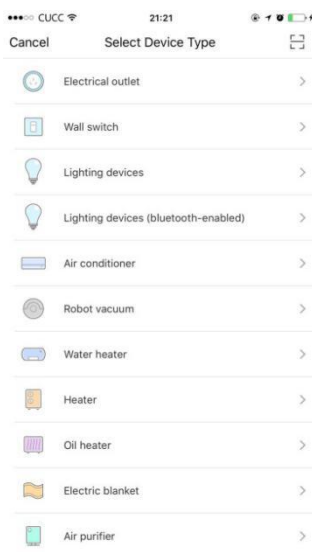


Step 1: Registration and login "smart life" APP.

If you don't have the account of "Smart life" APP, register an account or sign in with cellphone number + verification code. This page describes the Registration process.

1. Tap "Register" from the interface;
2. It automatically pop-ups the window of "Privacy Policy", after you read completely and press "Agree" button;
3. The system will automatically determine your country/region. You can also select your country code by yourself. Enter the mobile No. or Email , and press the button of "Obtain verification code";
4. Enter verification code and set the password;
5. Press the button of "Completed" to finish the registration, then for start to create the family.

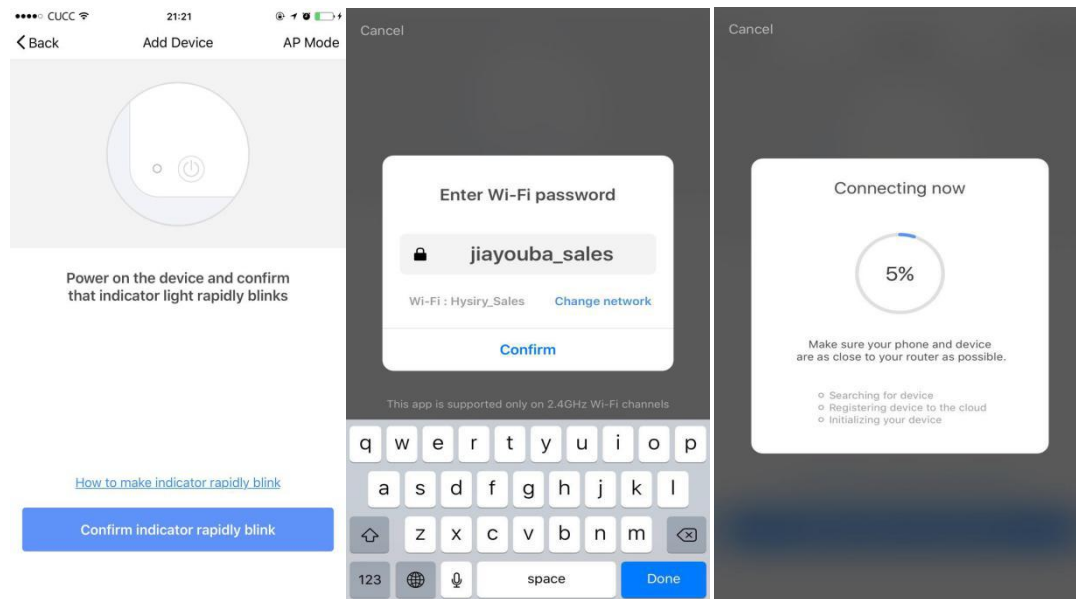
Make sure your phone is connected to WiFi in your home. Click "+" in the upper right corner of the homepage and select "Electrical outlet" from the device type.



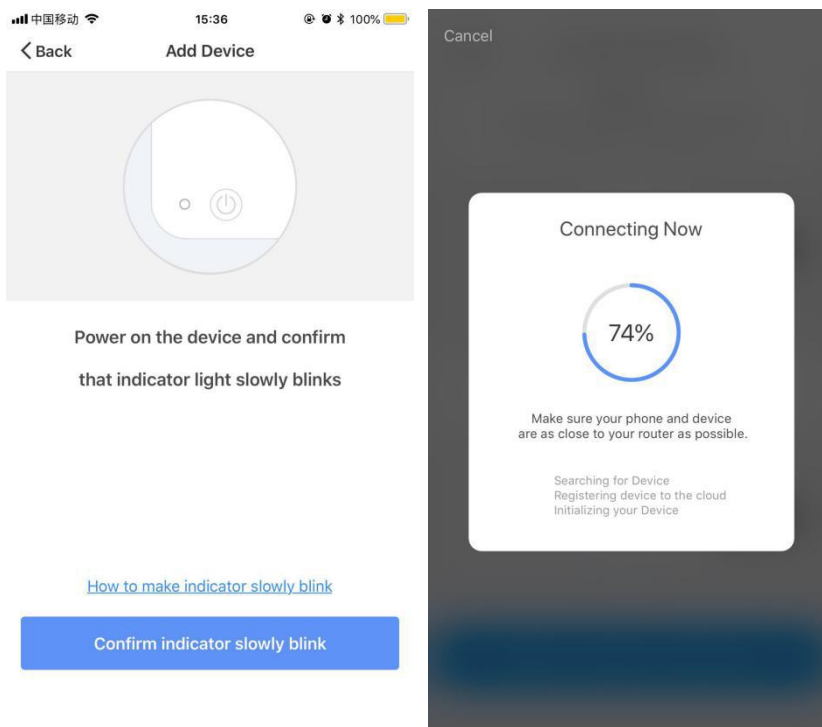
Step 2: Connect with the power supply, long press the power button more than 5 seconds until the blue indicator enters into the fast flash mode.

Select and press the button of "confirm indicator rapidly blink".

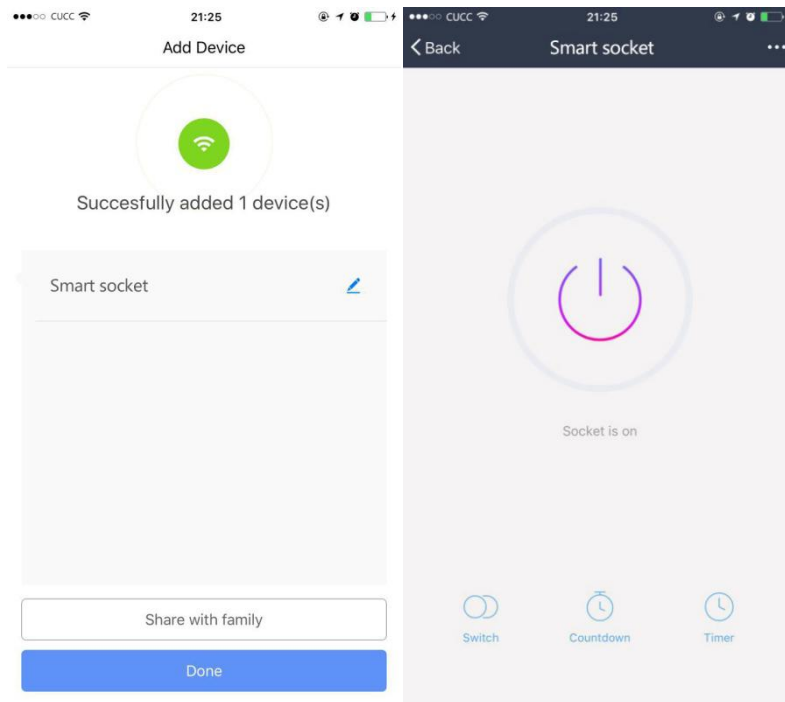
Step 3: Enter your WiFi password for your phone and click "Confirm" to enter the page of the search device.



While under AP mode, press the button "Confirm indicator slowly blink", and input the WiFi password to complete the connecting.

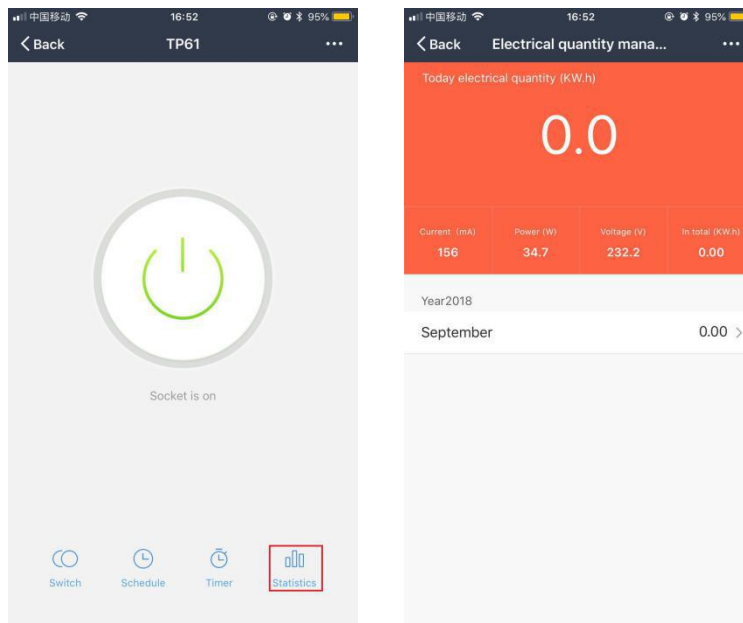


Step 4: Enter the device page, then complete the configuration



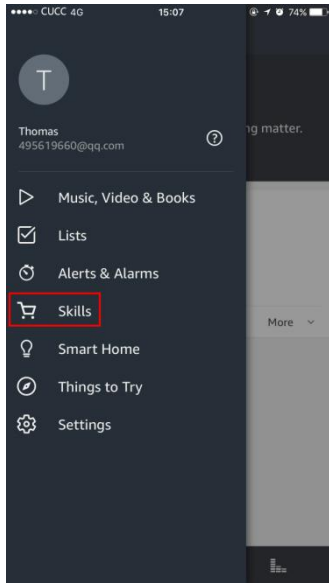
Take use of Statistic Function:

Click the icon of "statistics" at the lower right corner ,it will enter the interface of "Electrical Quality Management". Check the current detailed data.

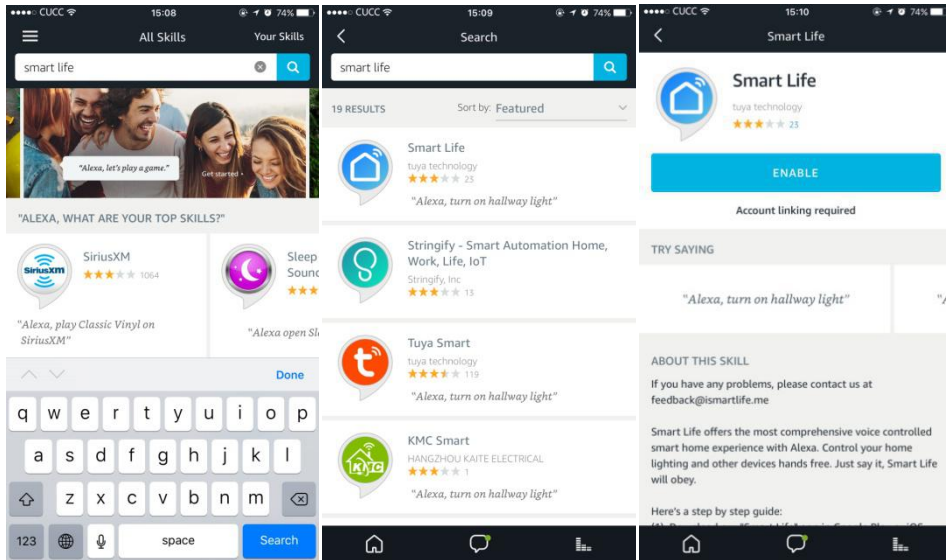


How to use Amazon Echo to control your Smart devices?

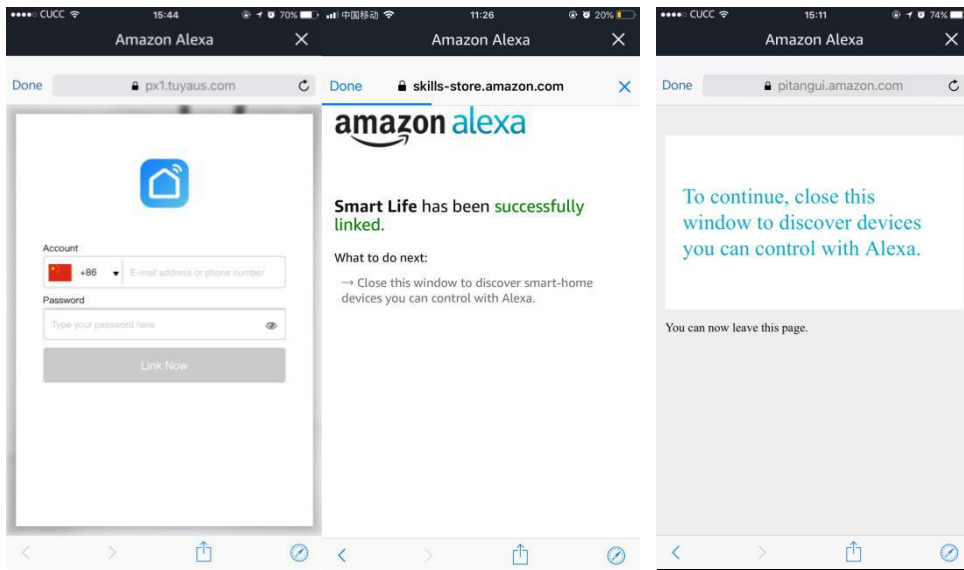
Step 1: Open the "Amazon Alexa"APP,then find the "Skills "button on the menu. Press it.



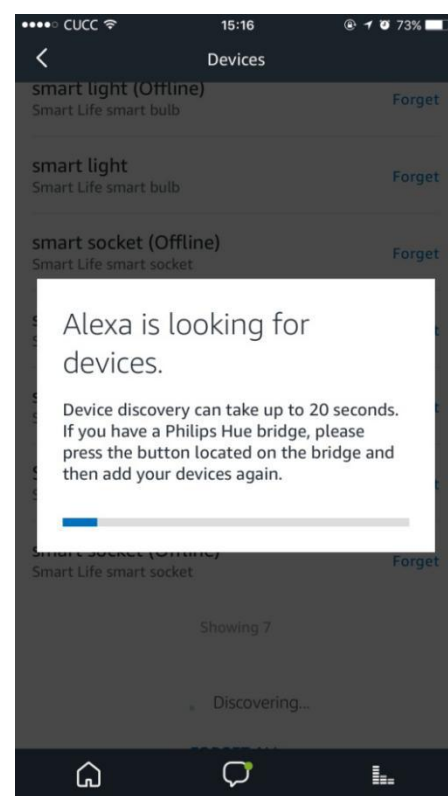
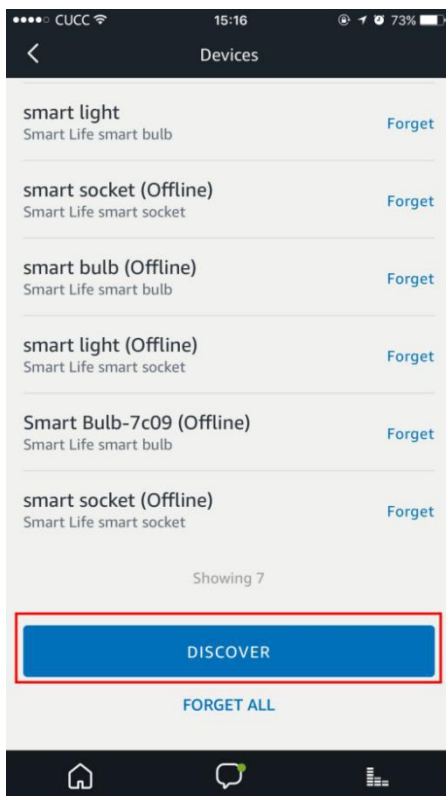
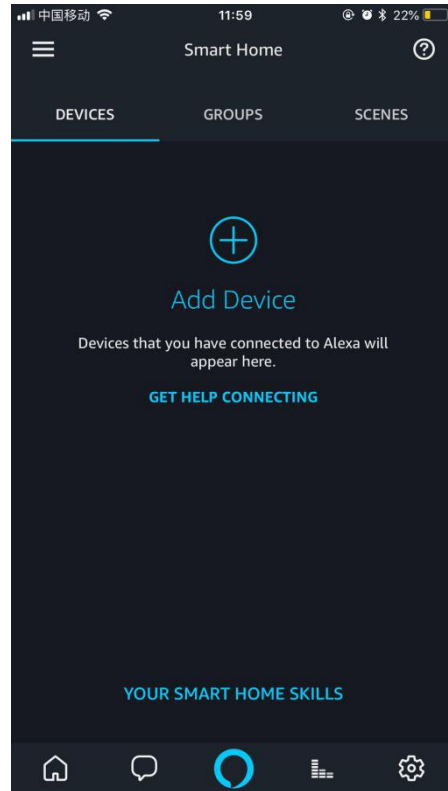
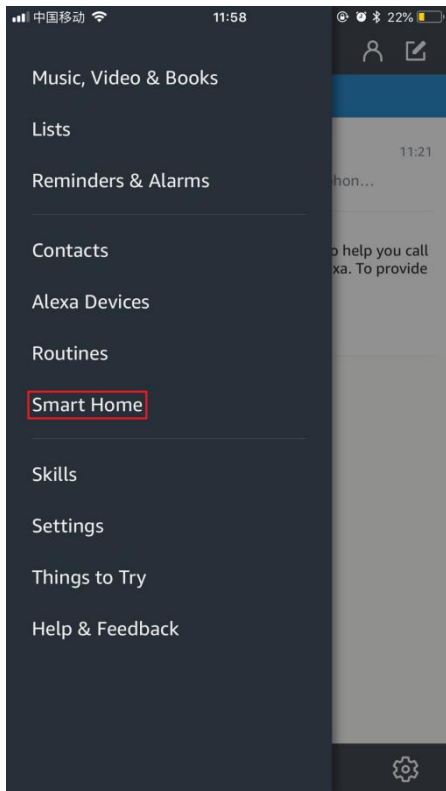
Step 2: Search the "Smart life" and choose the first one, then Enable it.



Step 3: Select your country code and Enter your "Smart life" APP Account and Password, then press the "Link Now" button. When the Account success to login press the "Done" button.



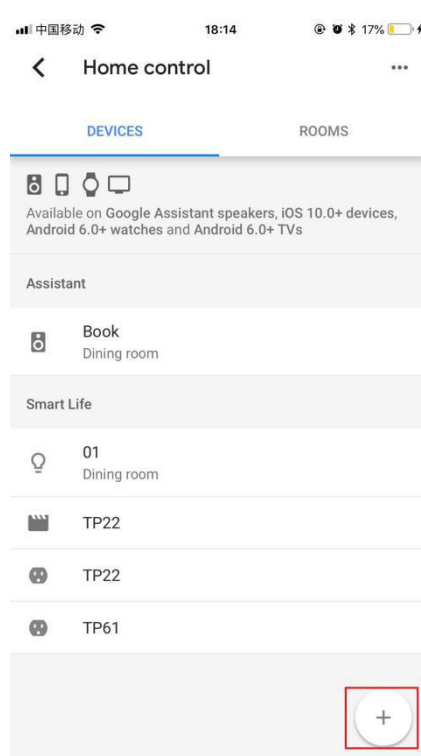
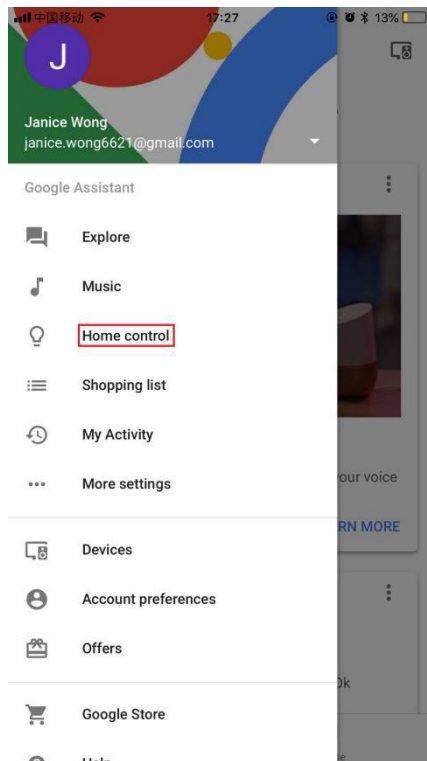
Step 4: Back to the menu, and press the “Smart home” button, then choose the “Devices”, then press the “Discover” button.



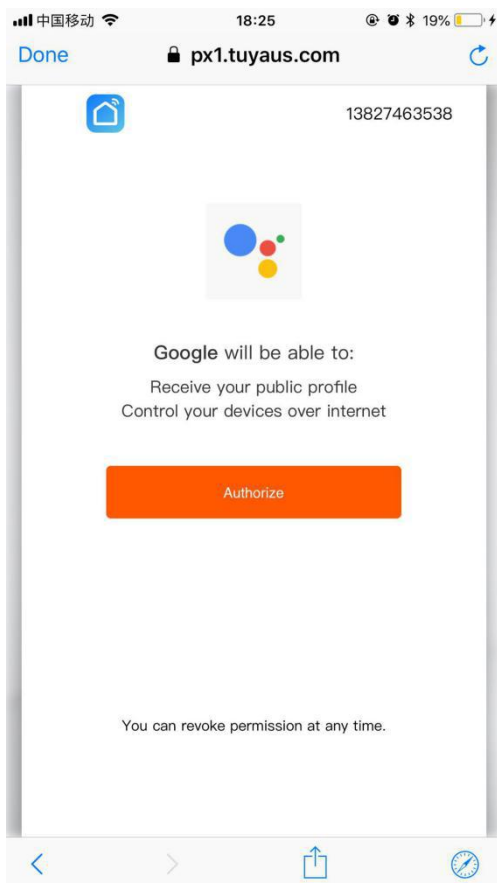
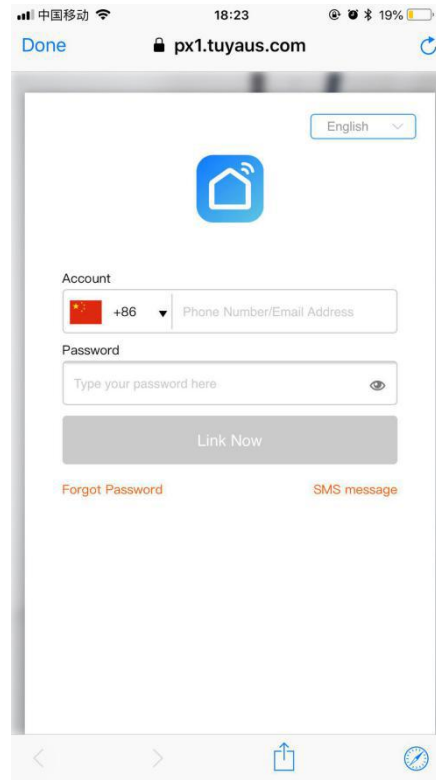
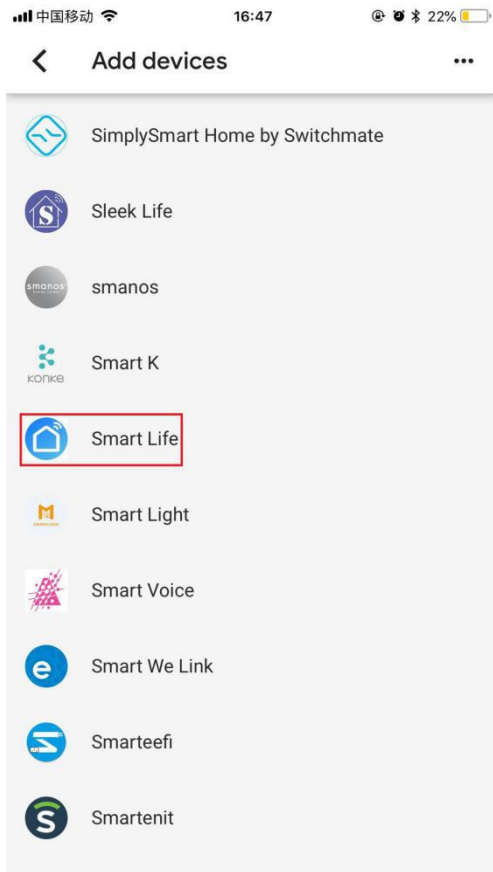
Step 5: Now you can use your Alexa to control your Smart devices, enjoy yourself.

How to connect with Google Home?

1. Click the button of "Home Control" on the left side of Google Home Page just as the illustration;
2. Then Click the button "+" on the lower right corner to add devices;

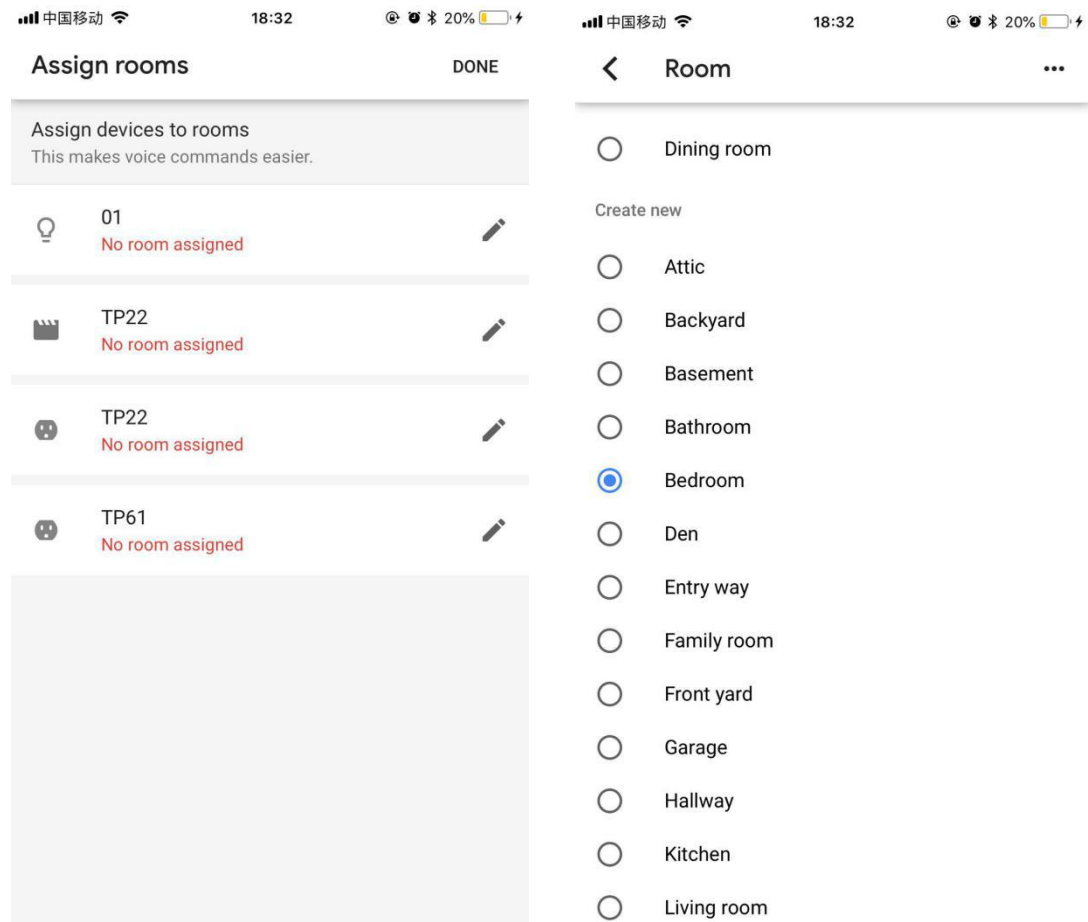


3. Choose "Smart Life" in the Add device list;
4. Please choose the country you living in, enter your account and password in the new window, then click the button " Link Now";
5. With the interface of Authorization, click the button "Authorize"



6. Then you will be asked to assign the rooms;

7. After you assign rooms for device, your device will be listed in the Home Control interface;



8. Now you can control these devices using Google Home. Take the bedroom light as an example, the supported voice are commanded as below:

Ok,google, turn on the bedroom light.

OK,google, brighten the bedroom light.

FCC Statement

This device complies with Part 15 of the FCC Rules. Operation is subject to the following two conditions:

(1) This device may not cause harmful interference.

(2) This device must accept any interference received, including interference that may cause undesired operation.

2. Changes or modifications not expressly approved by the party responsible for compliance could void the user's authority to operate the equipment.

Note: This equipment has been tested and found to comply with the limits for a class B digital device, pursuant to Part 15 of the FCC Rules. These limits are designed to provide reasonable protection against harmful interference in a residential installation.

This equipment generates uses and can radiate radio frequency energy and, if not installed and used in accordance with the instructions, may cause harmful interference to radio communications. However, there is no guarantee that interference will not occur in a particular installation. If this equipment does cause harmful interference to radio or television reception, which can be determined by turning the equipment off and on, the user is encouraged to try to correct the interference by one or more of the following measures:

- Reorient or relocate the receiving antenna.
- Increase the separation between the equipment and receiver.
- Connect the equipment into an outlet on a circuit different from that to which the receiver is connected.
- Consult the dealer or an experienced radio/TV technician for help.

This equipment should be installed and operated with a minimum distance of 20 cm between the radiator and your body.