

---

# 承 认 书

## SPECIFICATION FOR APPROVAL

客户名称

CUSTOMER NAME: D2G Group LLC

---

产品名称

PRODUCT NAME: 2.4G-5.09dBi-大 SMA 铜头公针黑色天线

---

客户料号

CUSTOMER P/N: DF055TLB

---

REV: A

---

	MANUFACTURER SIGNATURE	CUSTOMER SIGNATURE
CHECKED BY:	Wang Bin	Tang Mike
APPROVED BY:	Yang Tom	Sun Rocky
DATE:	2022/03/09	2022/03/11

---

# *Contents*

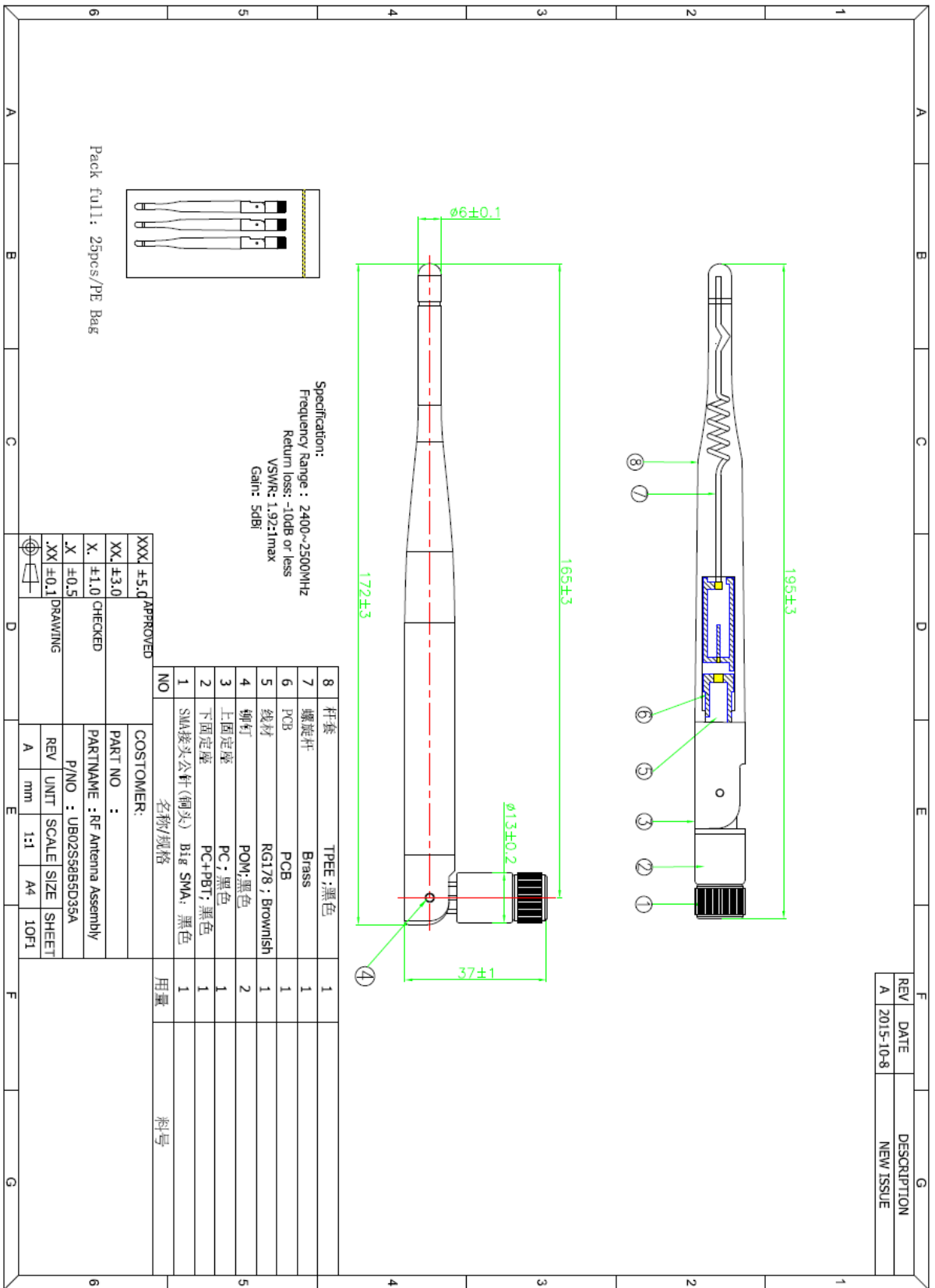
<i>Item</i>	<i>Description</i>
1.....	规格表
2.....	成品图
3.....	测试报告

## 1. 规格表:

### 产品主要技术参数

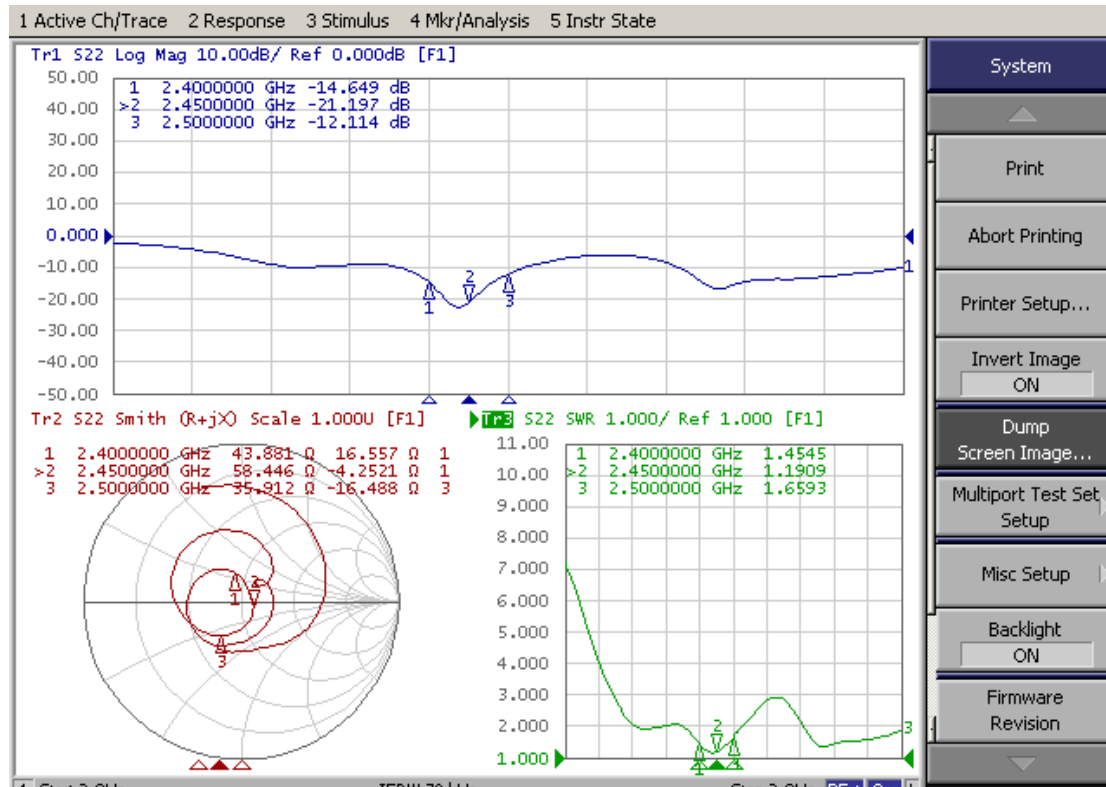
主要技术指标		Main technical specifications	
频率范围 (MHZ)	2400~2500	Frequency Range (MHZ)	2400~2500
特性阻抗( $\Omega$ )	50	Impedance( $\Omega$ )	50
增益(dBi)	5.09 Max	Gain(dBi)	5.09 Max
输出电压 驻波比	$\leq 1.92$	VSWR	$\leq 1.92$
最大功率	10W	Admitted Power	10W
极化方式	垂直极化	Polarization	Linear, Vertical
连接方式	SMS	Connector Type	SMA
物理性能		Physical Properties	
天线本体材料	TPEE	Antenna Base	TPEE
工作温度	-20 $^{\circ}$ C~+65 $^{\circ}$ C	Operating Temp	-20 $^{\circ}$ C~+65 $^{\circ}$ C
保存温度	-30 $^{\circ}$ C~+75 $^{\circ}$ C	Storage Temp	-30 $^{\circ}$ C~+75 $^{\circ}$ C

## 2. 成品图:

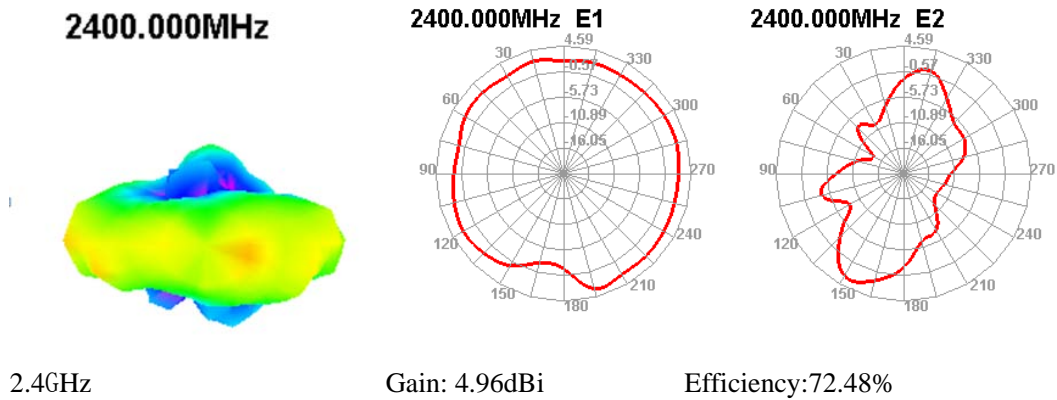


### 3. 测试报告

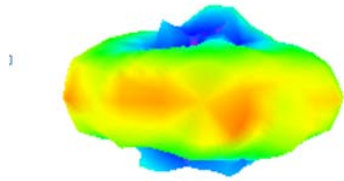
#### 3.1: 网络分析仪测试报告



#### 3.2: 暗室 2D、3DRaditation Pattern

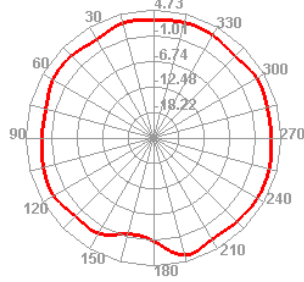


**2450.000MHz**



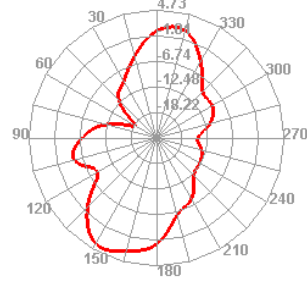
2.45GHz

**2450.000MHz E1**



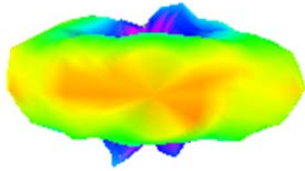
Gain: 4.97dBi

**2450.000MHz E2**



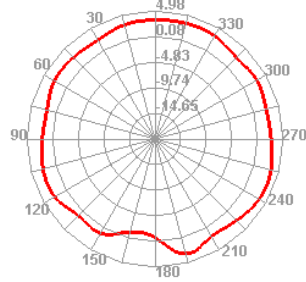
Efficiency: 71.21%

**2500.000MHz**



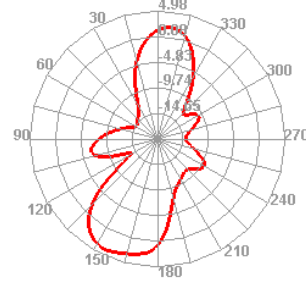
2.5GHz

**2500.000MHz E1**



Gain: 5.09dBi

**2500.000MHz E2**



Efficiency: 73.56%

Freq ( MHz )	2400	2450	2500
Gain ( dBi )	4.96	4.97	5.09
Effi / %	72.48	71.21	73.56