
承 认 书

SPECIFICATION FOR APPROVAL

客户名称

CUSTOMER NAME:

产品名称

PRODUCT NAME: 2.4G-5dBi-大 SMA 铜头公针黑色天线

客户料号

CUSTOMER P/N:

REV: A

	MANUFACTURER SIGNATURE	CUSTOMER SIGNATURE
CHECKED BY:	Wang Bin	Tang Mike
APPROVED BY:	Yang Tom	Sun Rocky
DATE:	2022/03/09	2022/03/11

Contents

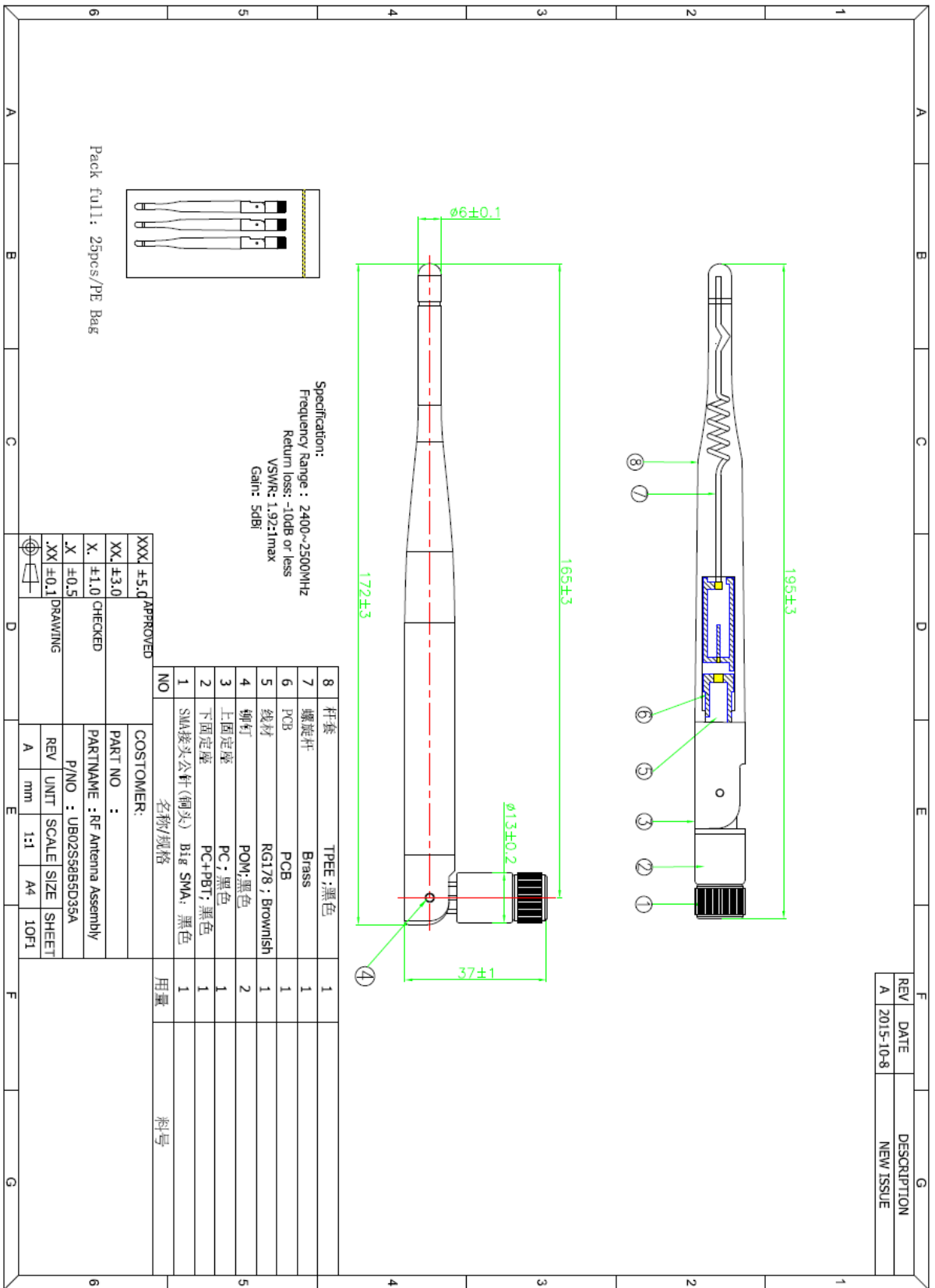
<i>Item</i>	<i>Description</i>
1.....	规格表
2.....	成品图
3.....	测试报告

1. 规格表:

产品主要技术参数

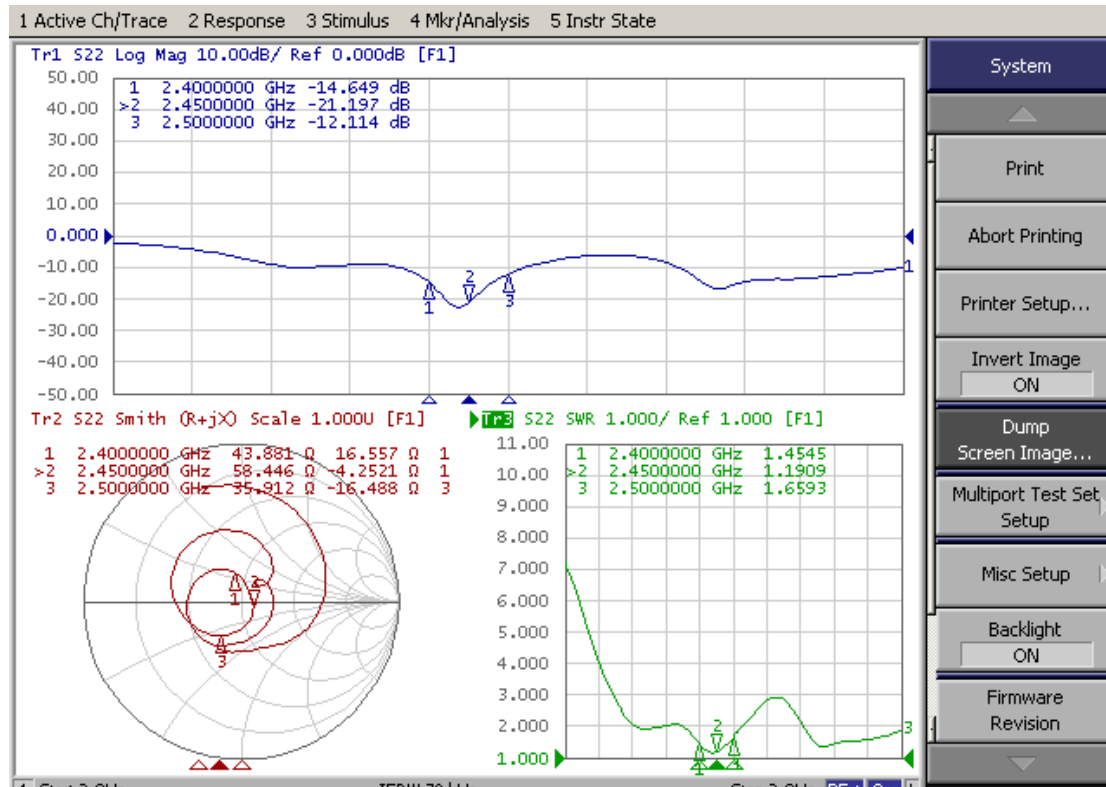
主要技术指标		Main technical specifications	
频率范围 (MHZ)	2400~2500	Frequency Range (MHZ)	2400~2500
特性阻抗(Ω)	50	Impedance(Ω)	50
增益(dBi)	5 Max	Gain(dBi)	5 Max
输出电压 驻波比	≤ 1.92	VSWR	≤ 1.92
最大功率	10W	Admitted Power	10W
极化方式	垂直极化	Polarization	Linear, Vertical
连接方式	SMS	Connector Type	SMA
物理性能		Physical Properties	
天线本体材料	TPEE	Antenna Base	TPEE
工作温度	-20 $^{\circ}$ C~+65 $^{\circ}$ C	Operating Temp	-20 $^{\circ}$ C~+65 $^{\circ}$ C
保存温度	-30 $^{\circ}$ C~+75 $^{\circ}$ C	Storage Temp	-30 $^{\circ}$ C~+75 $^{\circ}$ C

2. 成品图:

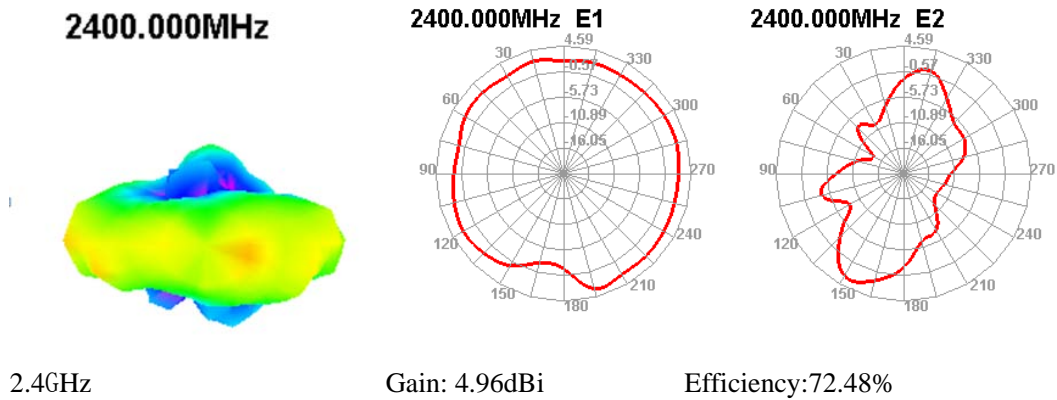


3. 测试报告

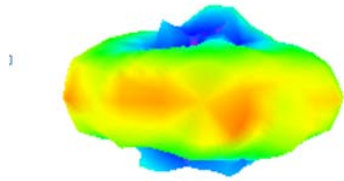
3.1: 网络分析仪测试报告



3.2: 暗室 2D、3DRaditation Pattern

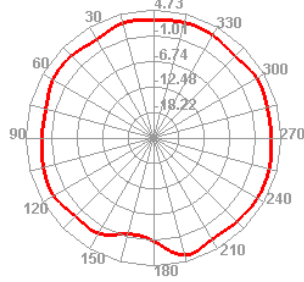


2450.000MHz



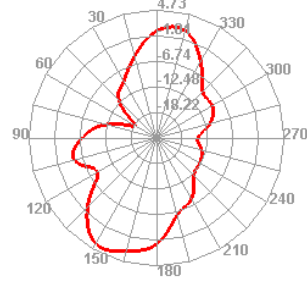
2.45GHz

2450.000MHz E1



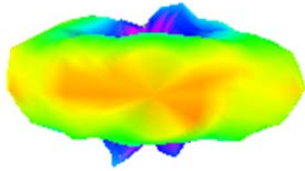
Gain: 4.97dBi

2450.000MHz E2



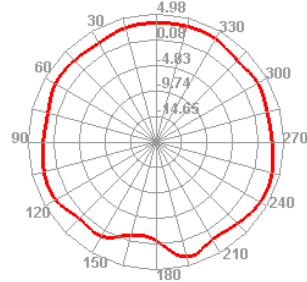
Efficiency: 71.21%

2500.000MHz



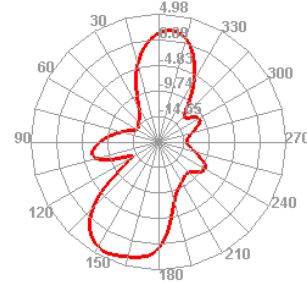
2.5GHz

2500.000MHz E1



Gain: 5.00dBi

2500.000MHz E2



Efficiency: 73.56%

Freq (MHz)	2400	2450	2500
Gain (dBi)	4.96	4.97	5.00
Effi / %	72.48	71.21	73.56