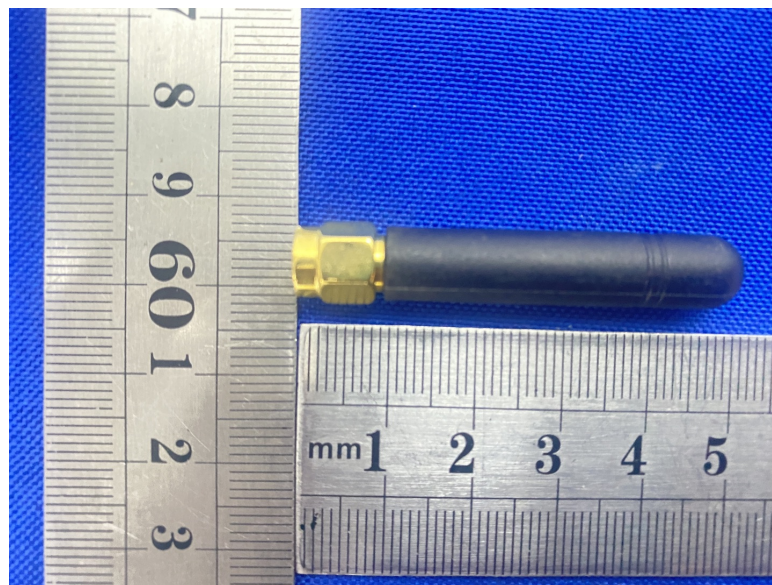


# Antenna Specification

## Specifications Summary

ITEM	SPEC.
Band Width	(2400-2480)MHz
GAIN	4.93dBi
Polarization	Horizontal
Azimuth Beam Pattern	Omni-directional
Impedance	50 $\Omega$
Antenna Length	48mm

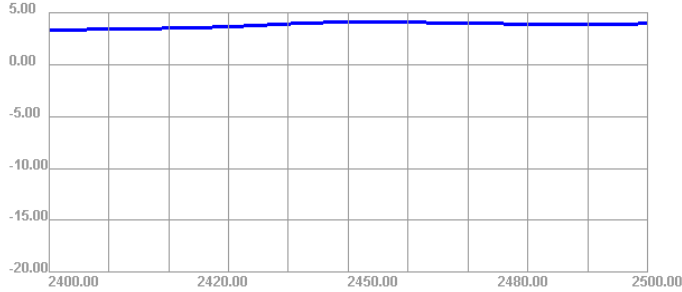
## Antenna Photo



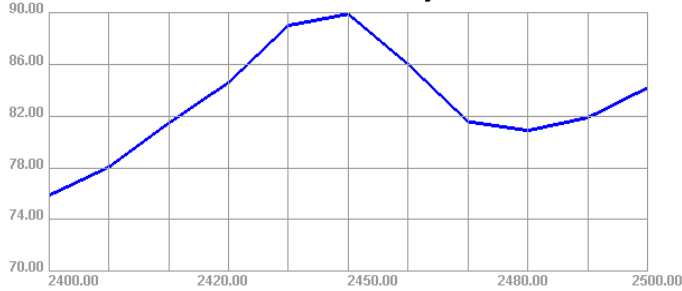
Passive Test For WIFI2.4											
Freq (MHz)	Effi (%)	Effi (dB)	Gain (dBi)	Gain (dBd)	UHS (%)	DHIS (%)	Max (dB)	Min (dB)	Attenut Hor	Attenut Ver	
2400	75.87	-1.2	3.33	1.18	41.581	34.289	3.33	-26.54	48.68	48.95	
2410	78.05	-1.08	3.38	1.23	43.694	34.36	3.38	-26.88	48.6	49.03	
2420	81.45	-0.89	3.49	1.34	46.376	35.075	3.49	-27.46	48.66	49.12	
2430	84.58	-0.73	3.62	1.47	48.596	35.986	3.62	-29.65	48.73	49.16	
2440	88.99	-0.51	3.92	1.77	50.999	37.992	3.92	-28.82	48.9	49.33	
2450	89.88	-0.46	4.93	1.97	50.775	39.101	4.12	-27.37	49.02	49.47	
2460	85.99	-0.66	4.07	1.92	47.788	38.203	4.07	-25.59	49.12	49.5	
2470	81.57	-0.88	3.94	1.79	44.985	36.585	3.94	-26.17	49.1	49.75	
2480	80.88	-0.92	3.91	1.76	44.913	35.97	3.91	-27.1	49.33	49.67	
2490	81.88	-0.87	3.89	1.74	46.168	35.708	3.89	-26.71	49.49	50.01	
2500	84.19	-0.75	3.93	1.78	48.179	36.01	3.93	-25.82	49.73	50.17	

Application Information	
04Version	4.95.303
TotalTime	13m 47s 869ms
AdditionalInfor	NULL

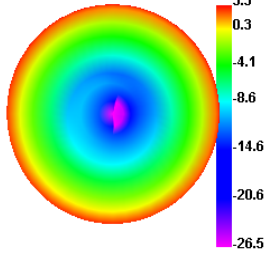
2400.00MHz - 2500.00MHz Gain



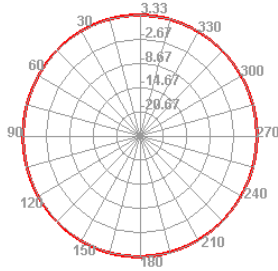
2400.00MHz - 2500.00MHz Efficiency



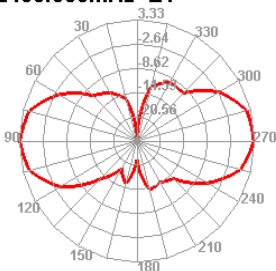
2400.000MHz



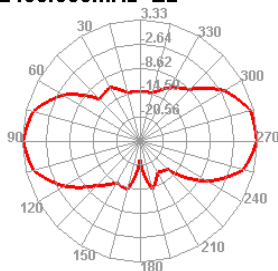
2400.000MHz H



2400.000MHz E1



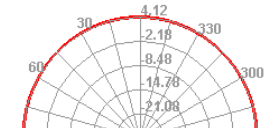
2400.000MHz E2

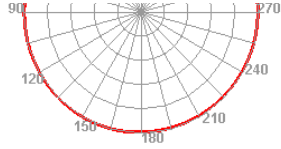
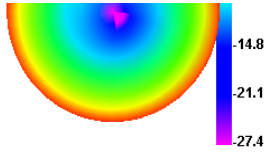


2450.000MHz

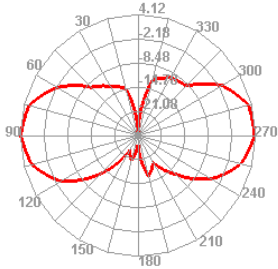


2450.000MHz H

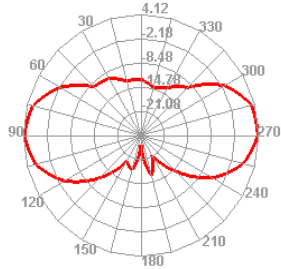




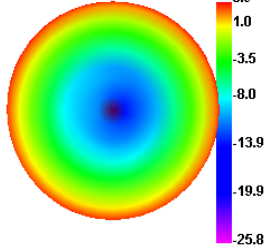
**2450.000MHz E1**



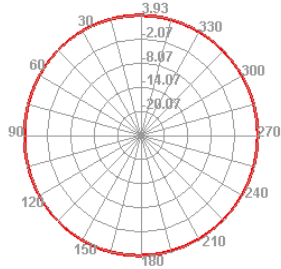
**2450.000MHz E2**



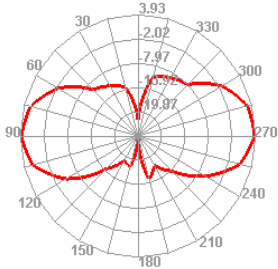
**2500.000MHz**



**2500.000MHz H**



**2500.000MHz E1**



**2500.000MHz E2**

