



# 深圳市联笙科技有限公司

ShengZhen LianSheng Technology Co.,Ltd.

## 规格承认书

### SPECIFICATION FOR APPROVAL

日期 Date 2020/05/28

编号 File No SA000790

版本 Revision 1.0

客 户

宝时得

CUSTOMER:

客户料号

CUSTOMER NO:

品 名

WIFI Antenna L总=135MM

供方料号

LSP.A1008.B113.01

送样日期 Date:

送样数量 Q"TY:

PCS

客户确认 CUSTOMER APPROVED BY

APPROVAL

CHIEF

SUPERVISOR

供方确认 SUPPLIER SIGNATURE

APPROVAL

CHECK

DESIGN

ChenGuoqiang

WenXue

ChenXingcheng

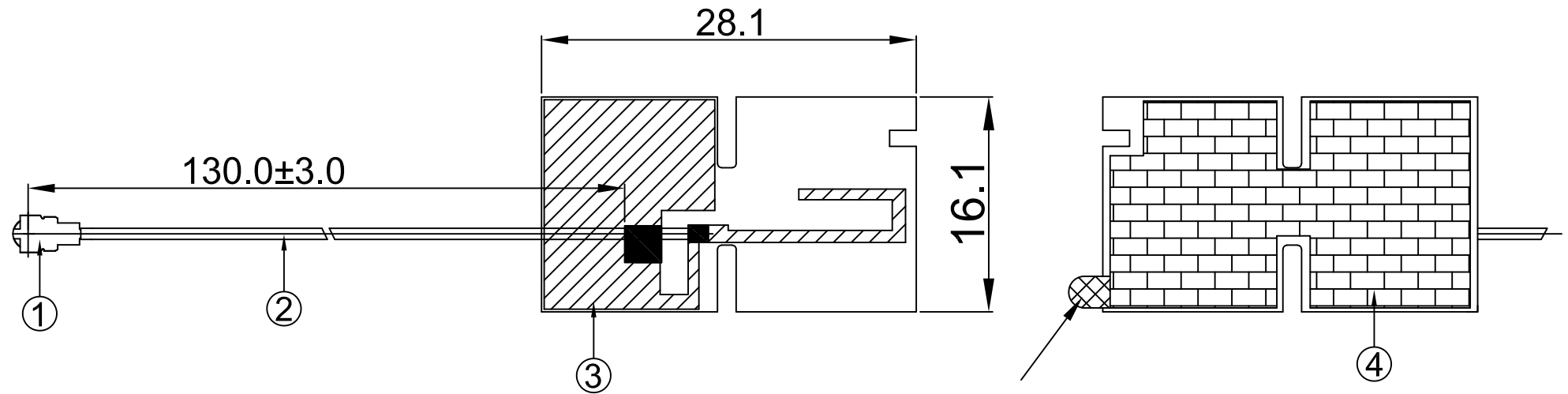
# 承认书项目表

NO	内容 (Contents)	页数 (Number of Page)	页码 (Page Code)
1	承认书封面 (Spec Cover)	1	1
2	承认书项目表 (Spec Item)	1	2
3	工程成品图 (Drawing)	1	3
4	天线规格 (Antenna Specification)	1	4
5	S参数测试 (S Parameter)	1	5
6	无源测试 (Passive Test)	1	6
7	有源测试 (Active Test)	1	7
8	方向图 (Radiation Pattern)	3	8 ~ 10
9	天线装配图 (Antenna Profile)	3	11 ~13
10	N/A	N/A	N/A
11	-	-	-
12	-	-	-
13	-	-	-

**RoHS**  
Compatible

CUSTOMER  
PART NO

REV.	DESCRIPTION	DATE
△	首次发行	2020-05-06



离型纸易撕区

4	Paster	27.0*15.5MM	3M	PAS100XXA.P01	1
3	PCB Black	28.1*16.1MM	PCB	PCB113XXX.P01	1
2	Coaxial Cable	O.D.1.13 Black	O.D.1.13	COA10001A.P01	1
1	Mini Connector	Au Plated 1代	Cu	TER10001A.P01	1
NO	PART NAME	DESCRIPTION	Material	Part Number	Q.TY



**深圳市联笙科技有限公司**

Tel:0755-82885545

ShengZhen LianSheng Technology Co.,Ltd.

MP:13823198410

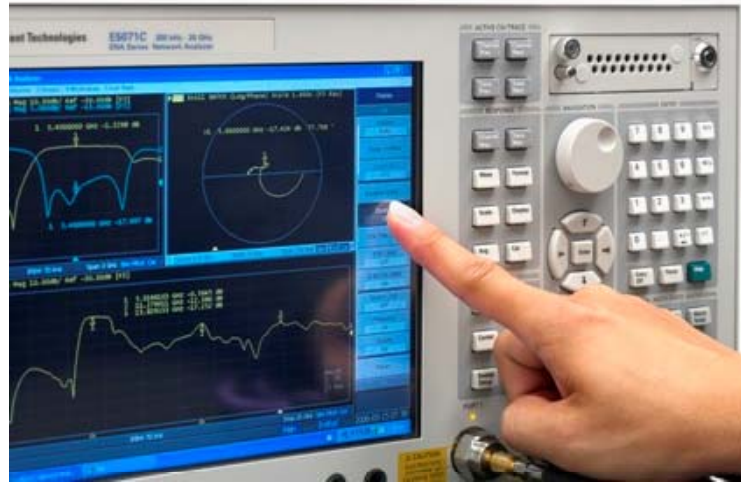
PART NAME:WIFI Antenna L=130mm MHF			
PART NO.:LSP.A1008.B113.01		DATE: 2020-05-06	
APPROVED BY	CHECKED BY	DESIGNED BY	 Tolerance X.X ±0.50 X.XX±0.15 X° ±3°
陈国强	文雪	黄望春	
UNITS: mm SCALE: 1/1 REVISION: A			

# 天线规格

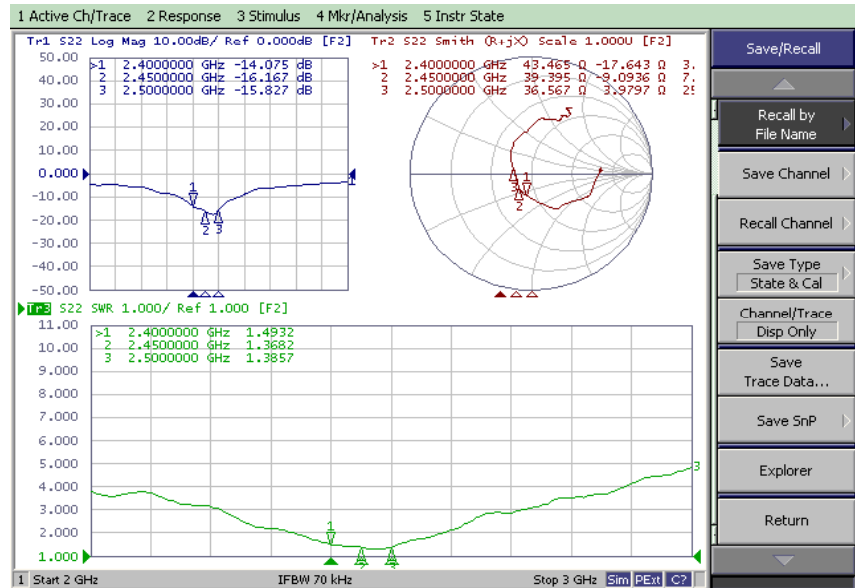
## Antenna Specification

<b>Electrical Properties</b>	
Frequency	2.4-2.5GHz
Impedance	50 Ohm Nominal
V.S.W.R	2.0 Max
Gain	4.1dBi
Radiation	Omni-directional
Polarization	Linear
<b>Physical Properties</b>	
Connector	1代IPEX
Cable Type	O.D.1.13mm
Cable Length	130mm
Cable Color	Black
Operating Temp.	-40 ~ +85 °C
Storage Temp.	-40~ +85 °C

# Agilent E5071B



# S Parameter Test // WiFi Antenna



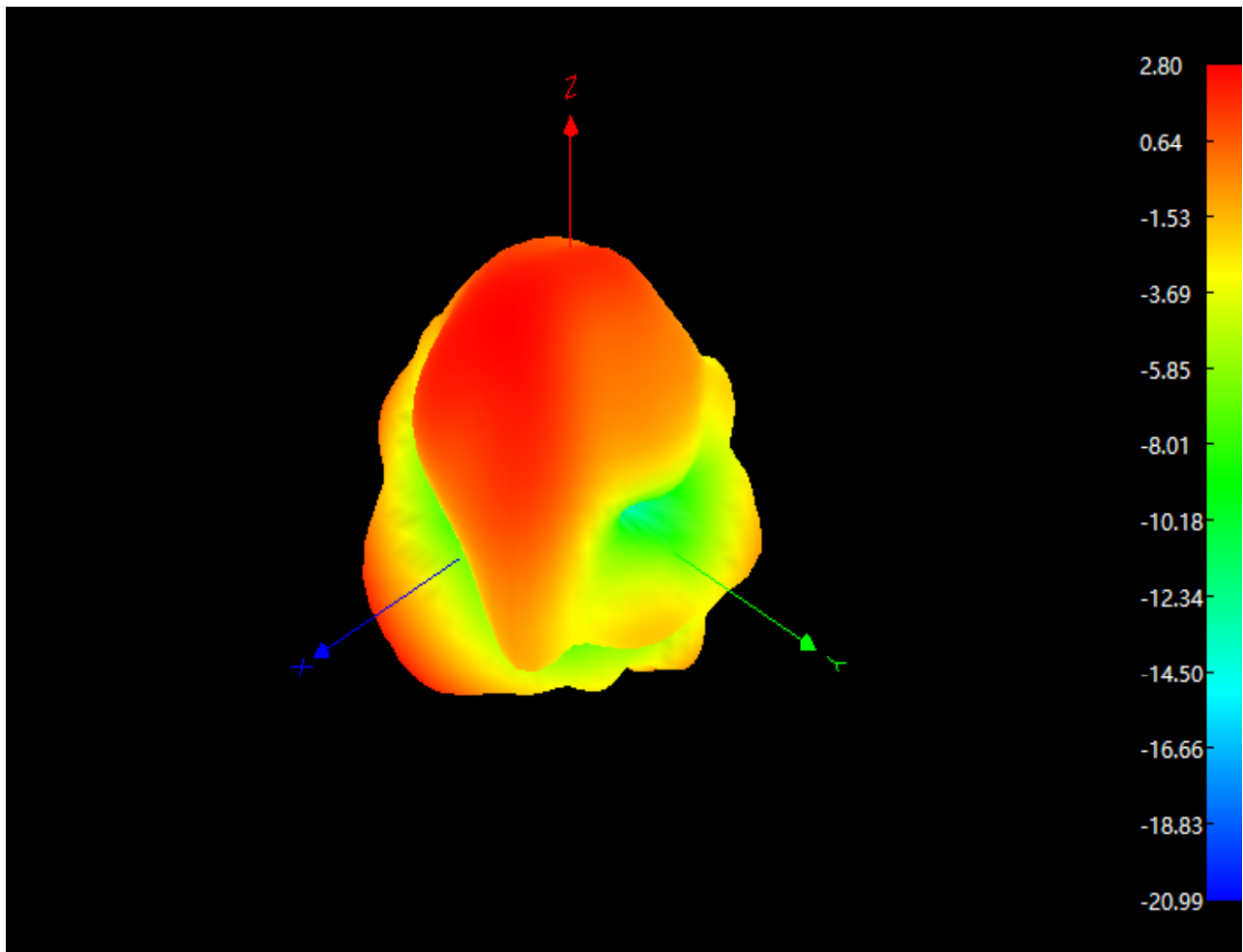
### Passive Test For WiFi Antenna(2.4G)

Freq (MHz)	Effi (%)	Effi (dB)	Gain (dBi)
2400	53.0	-2.8	2.8
2410	52.7	-2.8	3.0
2420	53.8	-2.7	2.8
2430	55.9	-2.5	2.6
2440	54.1	-2.7	2.5
2450	55.3	-2.6	3.0
2460	55.9	-2.5	3.5
2470	55.1	-2.6	3.7
2480	53.3	-2.7	3.9
2490	53.5	-2.7	4.0
2500	50.7	-3.0	4.1

## Active Test For WIFI

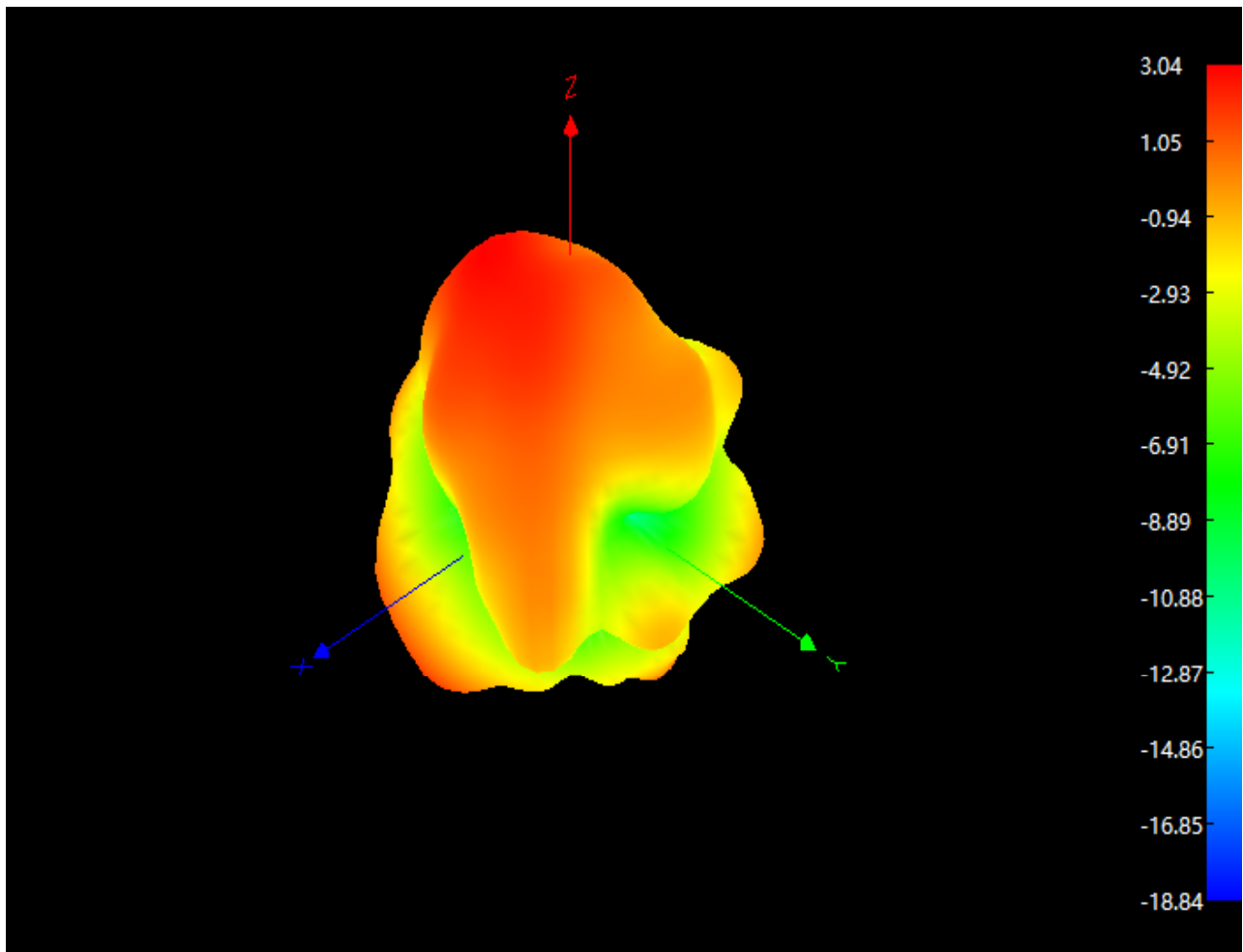
Band	Channel	Data Rate	TRP	EIRP	Data Rate	TIS	EIS
WIFI 2.4G 802.11b	1	11Mbps	11.9	18.1	11Mbps	-78.4	-84.7
	6		13.8	19.3		-79.0	-85.5
	13		12.1	18.5		-80.7	-86.4

## Radiation Pattern For WiFi (2400MHz)

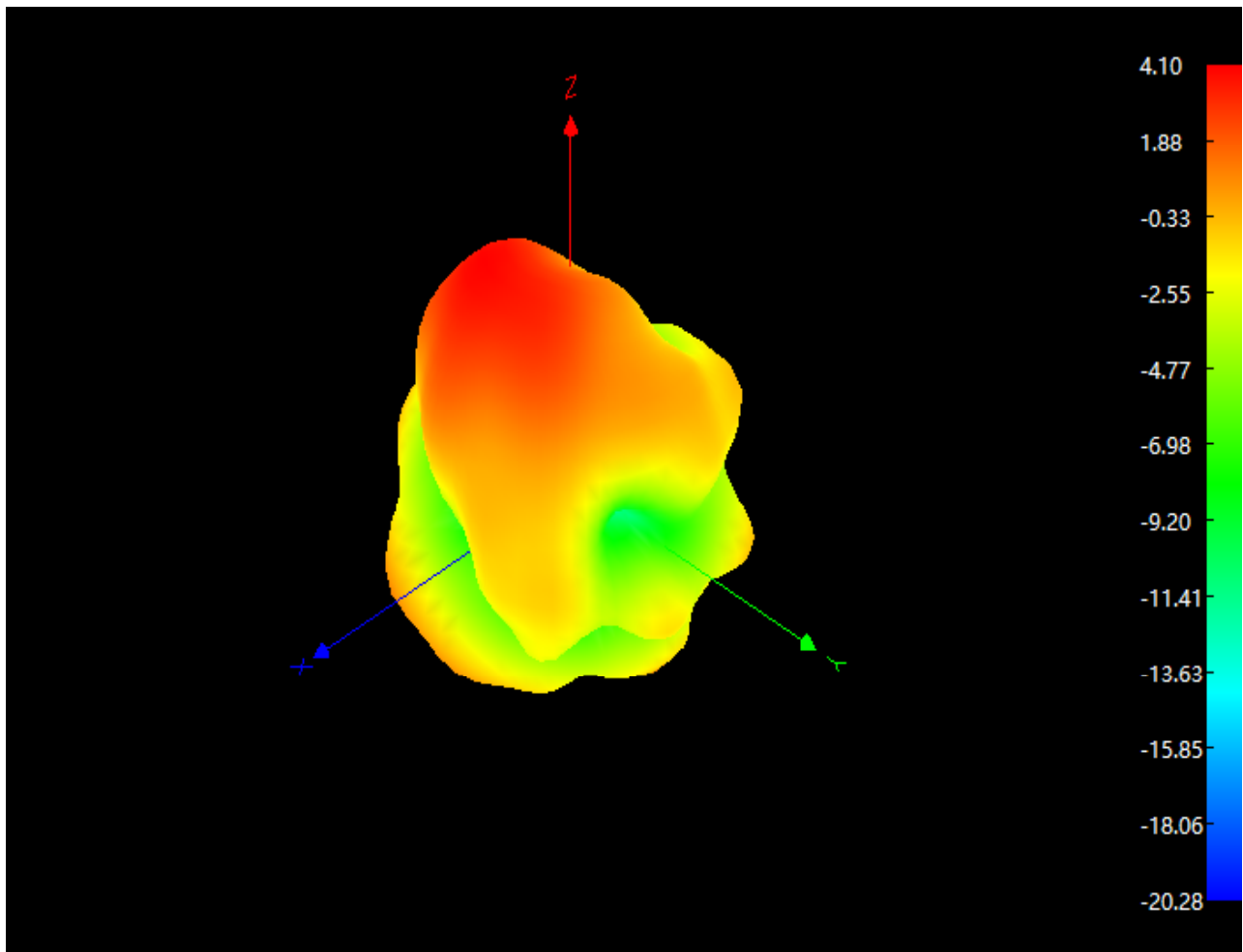




## Radiation Pattern For WiFi (2450MHz)



## Radiation Pattern For WiFi (2500MHz)

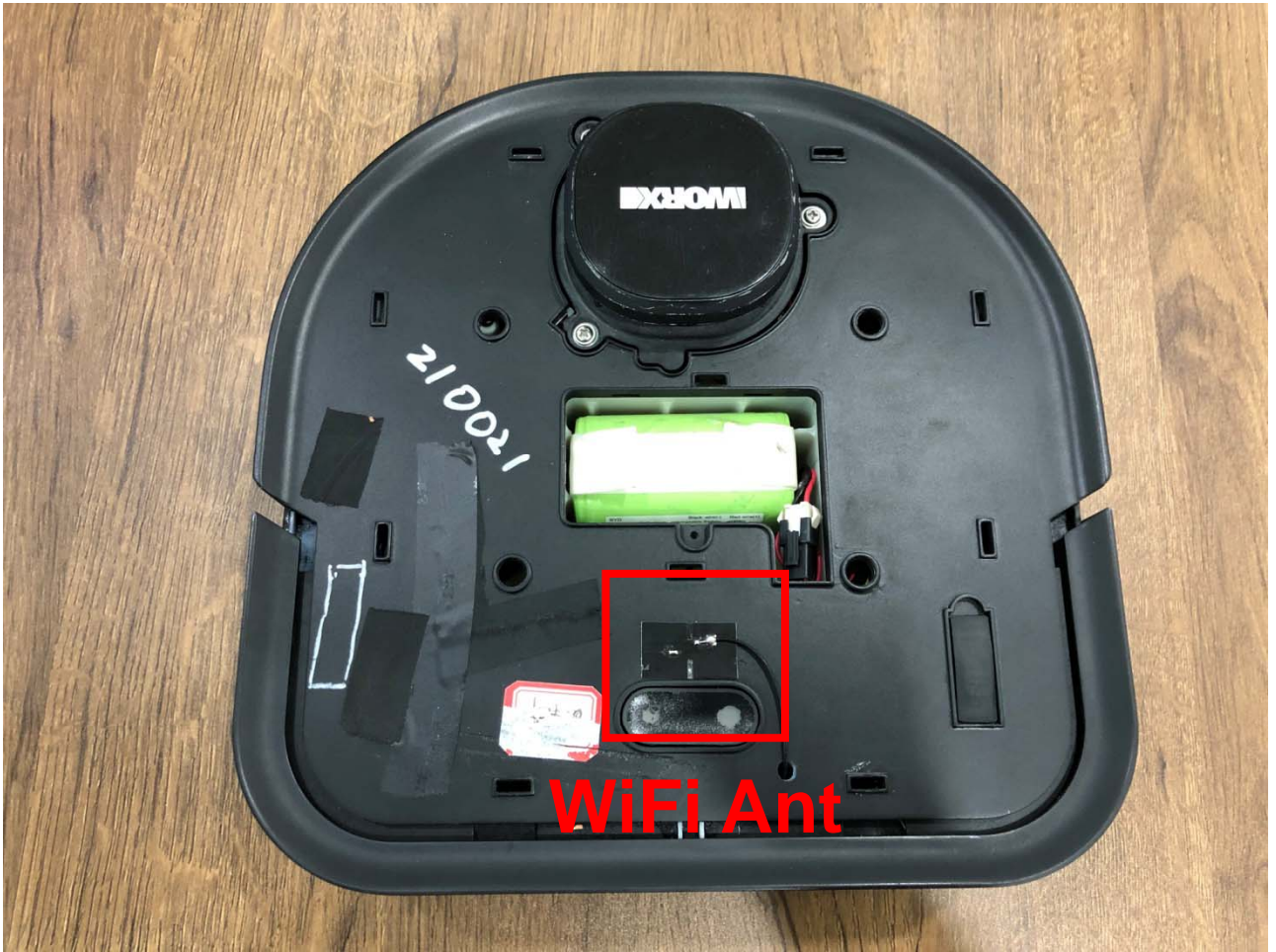


*Device*



*Antenna  
WiFi*





WiFi Ant