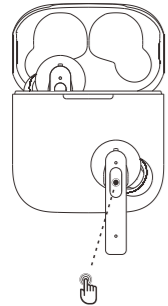


Reset



As soon as you take out TWS-10N from the charging case, long press R earbud 10 seconds till the red LED indicator on R earbud keep blinking 5 times, it means cleared pairing.
Put the earbud into the charging case again and then take out both earbuds from the charging case, you can see earbud are in pairing mode with prompts "Power on".
After paired, R earbud LED indicator blinks in red and green, then you can start using TWS-10N.

Notes

1. Avoid prolonged exposure to excessive volume that may cause noise-induced hearing impairment. Turn the volume down before putting on your headphones, then adjust it to the right volume.
2. Don't use headphones while driving or riding your bike
3. Stay away from sharp edges, uneven surfaces, metal parts, and anything that could damage the headphones.
4. Do not modify, repair or remove headphones without professional guidance.
5. Do not use corrosive or volatile liquid to clean the earphone
6. Do not use headphones in dangerous environments.
7. This headphone contains small parts, which may cause choking hazard. Please keep away from children and pets to prevent accidents.
8. Battery warning:
*Improper use of the battery may cause fire or chemical burns. The battery may explode in case of damage.

*The battery can only be charged using an adapter specially provided for this product.

*Please dispose of batteries according to local regulations. Recycle if possible. Do not dispose of batteries as household waste or throw them into a fire, lest they explode.

*Please refer to the user manual for instructions on the charging status indicator.

FCC Statement

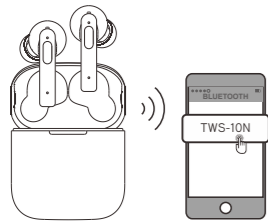
FCC Statement
Changes or modifications not expressly approved by the party responsible for compliance could void the user's authority to operate the equipment.
This equipment has been tested and found to comply with the limits for a Class B digital device, pursuant to Part 15 of the FCC Rules. These limits are designed to provide reasonable protection against harmful interference in a residential installation. This equipment generates uses and can radiate radio frequency energy and, if not installed and used in accordance with the instructions, may cause harmful interference to radio communications. However, there is no guarantee that interference will not occur in a particular installation. If this equipment does cause harmful interference to radio or television reception, which can be determined by turning the equipment off and on, the user is encouraged to try to correct the interference by one or more of the following measures:
-- Reorient or relocate the receiving antenna.
-- Increase the separation between the equipment and receiver.
-- Connect the equipment into an outlet on a circuit different from that to which the receiver is connected.
-- Consult the dealer or an experienced radio/TV technician for help.
This device complies with part 15 of the FCC rules. Operation is subject to the following two conditions (1) this device may not cause harmful interference, and (2) this device must accept any interference received, including interference that may cause undesired operation.

TWS-10N

User Manual

Bluetooth ANC True Wireless Earphones

Bluetooth Connection



Using dual earbuds mode

After take out "TWS-10N" from the charging case, both of L&R earbuds turn on automatically with voice prompt "Power on".
Soon later, L & R earbuds pair automatically, and the R earbud LED indicator blinks in red and green color.

Using single earbud mode

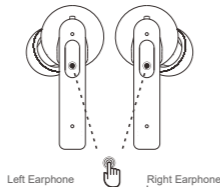
If you only take out L or R earbud from the charging case, it turns on automatically with voice prompt "Power on", and the LED indicator on L or R earbud will blink in red and green alternately.

Connect with your cell phone:

When you hear voice prompts "Power on", after connected, R earbud LED indicator will blink red and green alternately. Activate your cell phone Bluetooth and search "TWS-10N". Choose and click "TWS-10N" on mobile phone, then you will hear "connected".

Start to enjoy music after you finished the above steps.

Operating



Left Earphone Right Earphone

Power On/Off

As soon as take out earbuds from the charging case, TWS-10N turns on automatically.
Put earbuds into the charging case, TWS-10N turns off automatically.
(Cannot power On/Off manually)

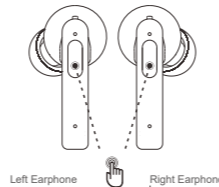
Answer/Hang up/Reject the Call

In incoming call, click L or R earbud to answer the phone call.
In incoming call, long press 2 seconds on L or R earbud to reject the call.
When in calling, double-click L or R earbud to hang up the phone call.

Voice assistant

Long press 2 seconds L earbud to turn on voice assistant.

Operating



Left Earphone Right Earphone

Play/Pause music

When playing music, double-click L or R earbud to play/pause music.

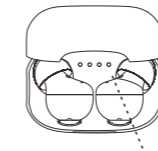
Last song/Next song

When playing music, three-click L earbud to return to the previous song.
When playing music, three-click R earbud to next song.

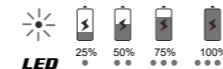
ANC mode

In normal mode, hold R earbud for 2 seconds to turn on ANC.

Charging

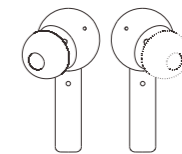


LED Light



Please use the provided charging cable to recharge the earbuds by the charging case.
Charging case LED indicator in green when charging.
After full recharged, four LED indicator on the charging case are always on.

Accessories



Wear the right size ear caps for your ears.
Adjusting earbuds correctly achieves the best noise reduction performance and sound quality.

