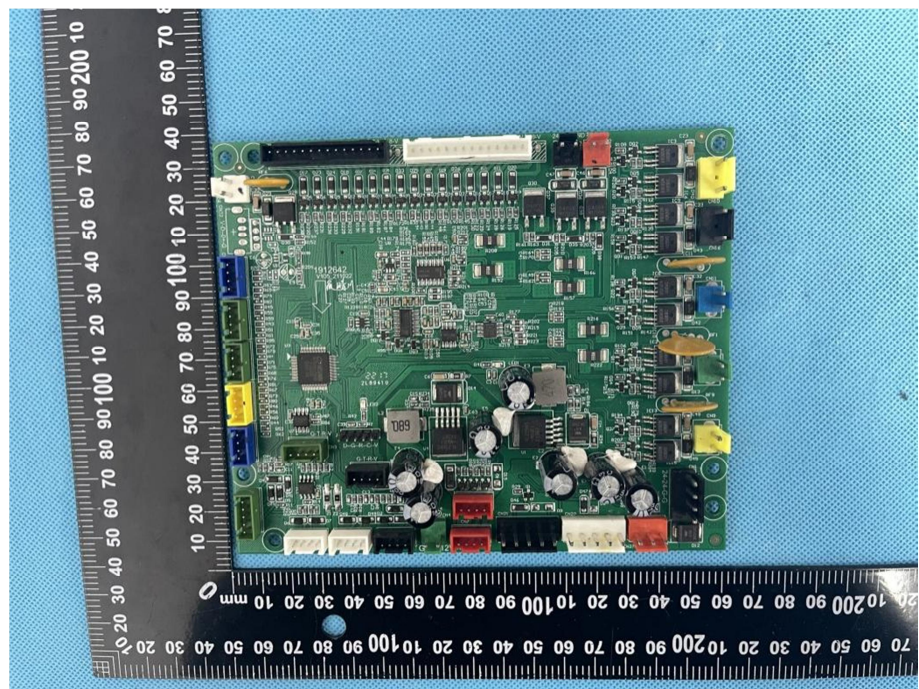
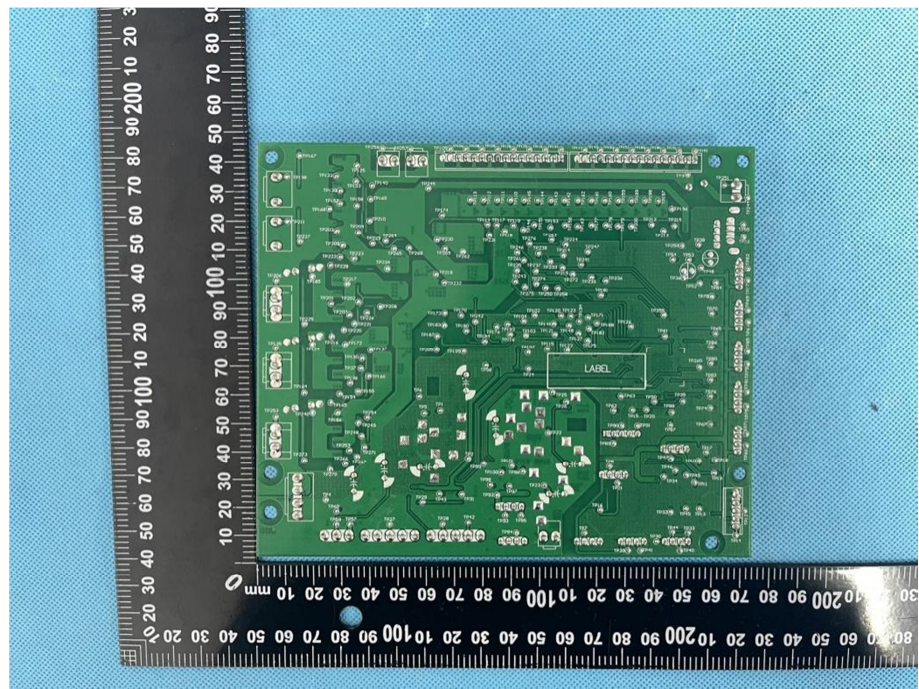
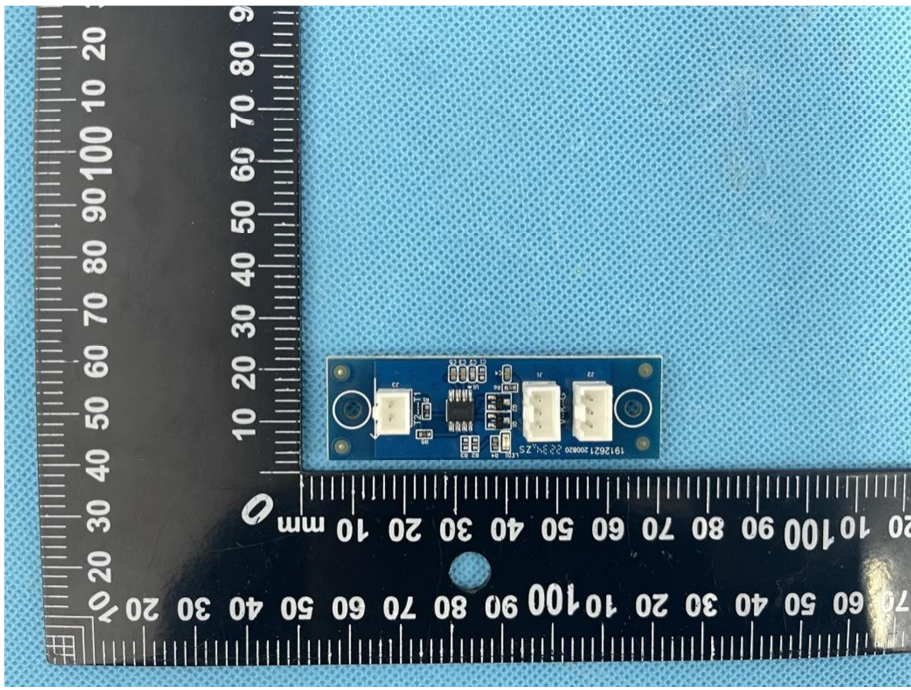
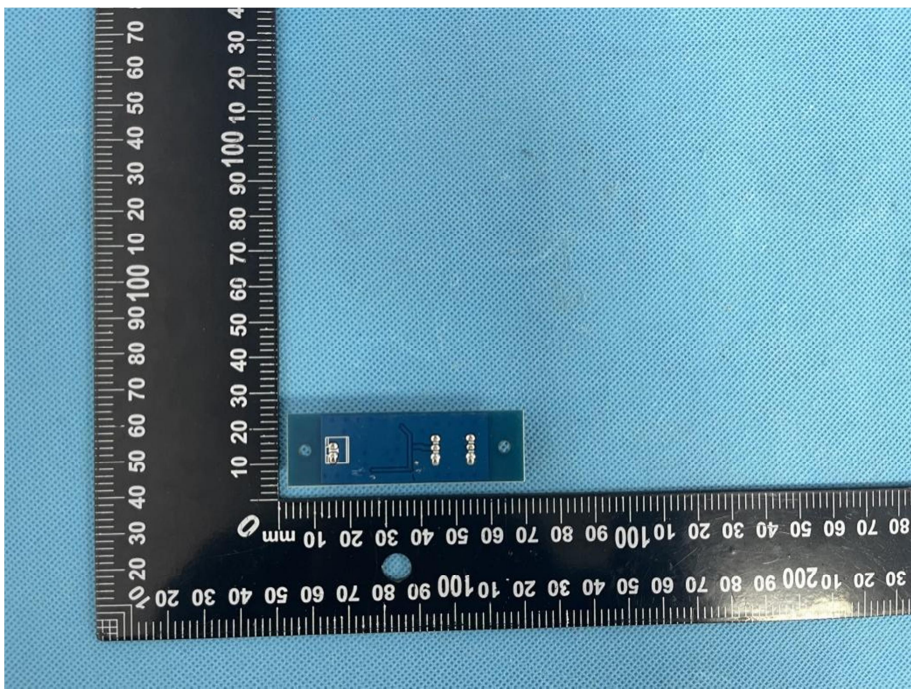


**Solder
Board-Component
View 1**

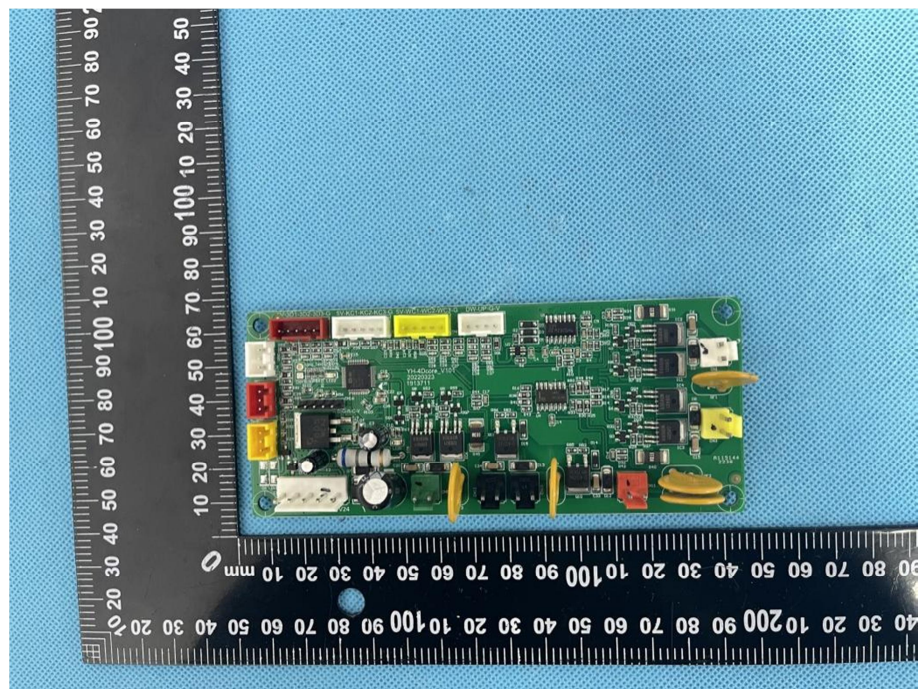


**Solder
Board-Component
View 2**



<p>Solder Board-Component View 3</p>	 <p>A photograph showing a blue printed circuit board (PCB) component, identified as 'View 3'. The component is rectangular and populated with various electronic components, including a microcontroller, several integrated circuits, and surface-mount components. It is placed on a blue textured surface next to a black metric ruler for scale. The ruler shows markings in millimeters and centimeters, with the component's length being approximately 60 mm.</p>
<p>Solder Board-Component View 4</p>	 <p>A photograph showing the same blue PCB component, identified as 'View 4'. This view shows the reverse side of the component, which is mostly blank with some surface-mount components and a small white label. It is placed on the same blue textured surface next to the same black metric ruler for scale. The component's length is approximately 60 mm.</p>

**Solder
Board-Component
View 5**



**Solder
Board-Component
View 6**

