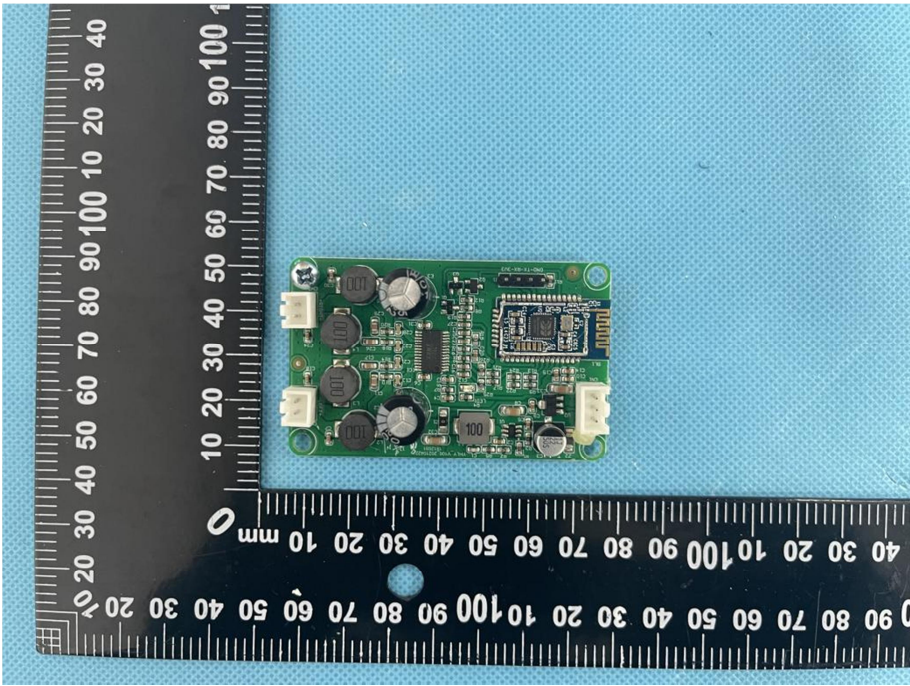
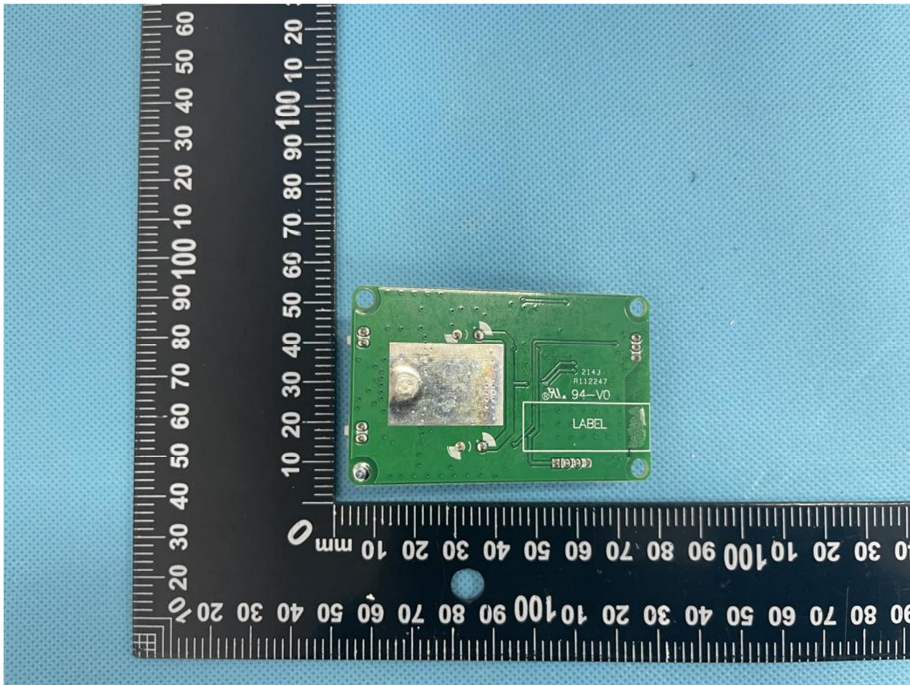
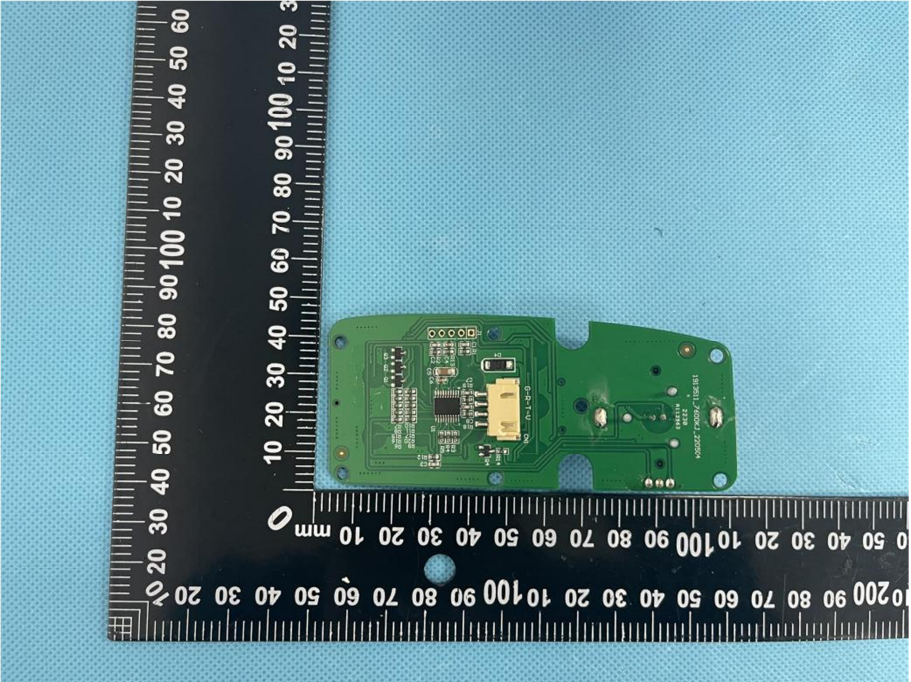
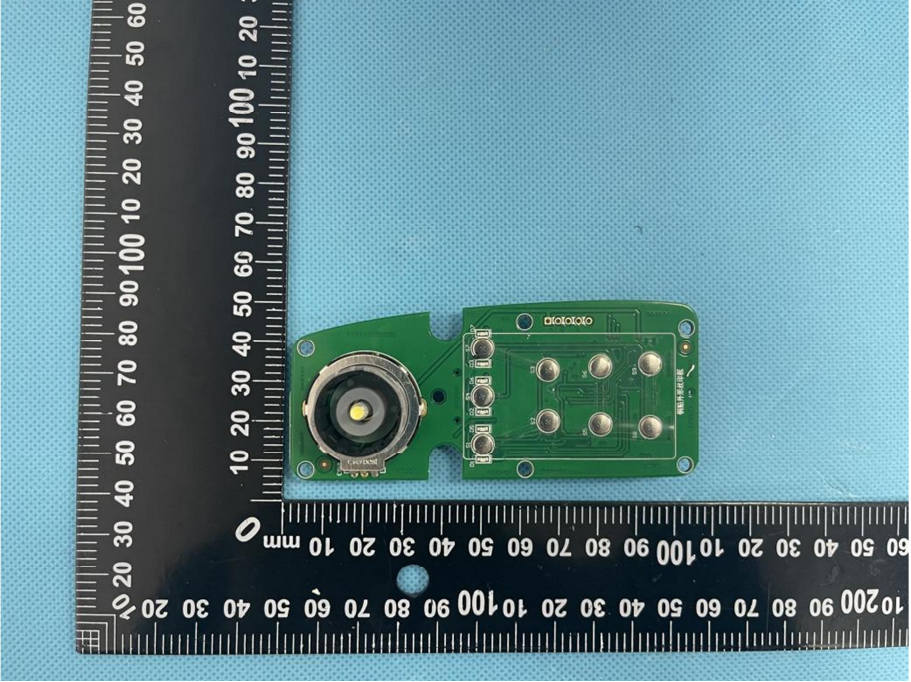
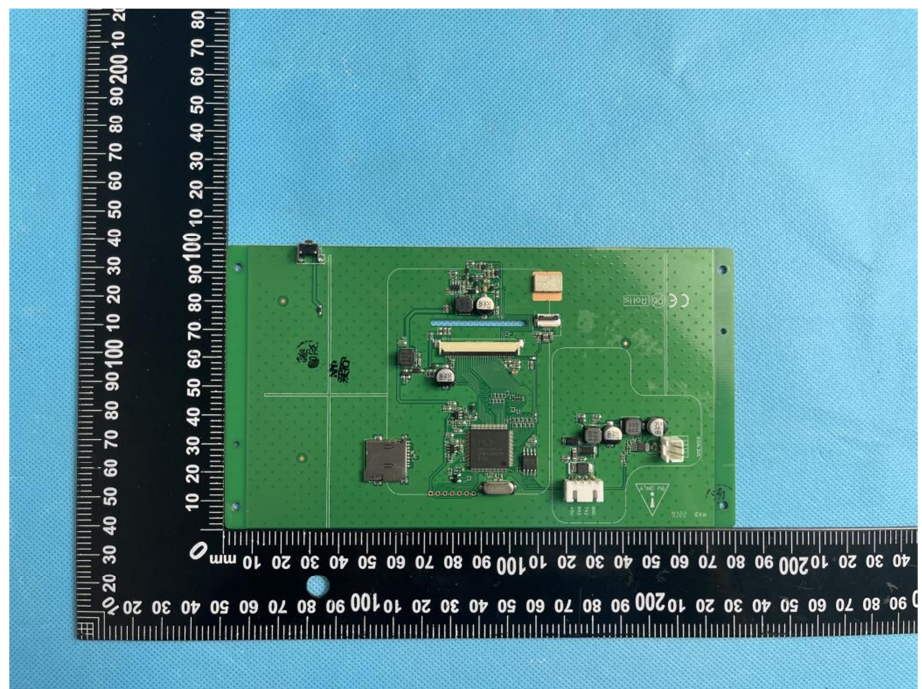


<p><b>Solder Board-Component View 6</b></p>	 <p>A photograph of a green printed circuit board (PCB) component, labeled as View 6. The board is rectangular and populated with various electronic components, including several electrolytic capacitors, integrated circuits, and surface-mount components. It is placed on a blue textured surface next to a black L-shaped ruler for scale. The ruler shows measurements in millimeters, with the vertical scale ranging from 0 to 100 mm and the horizontal scale from 0 to 100 mm.</p>
<p><b>Solder Board-Component View 7</b></p>	 <p>A photograph of the same green PCB component, labeled as View 7. This view shows the reverse side of the board, featuring a large, square, silver-colored component, likely a heat sink or a specific type of capacitor, and a rectangular area labeled "LABEL". The board is placed on the same blue textured surface next to the same black L-shaped ruler for scale.</p>

<p><b>Solder Board-Component View 8</b></p>	 <p>A photograph of a green PCB component, labeled 'View 8'. The component is irregularly shaped and features various electronic components including a central integrated circuit, several surface-mount components, and a connector. It is placed on a blue textured background next to a black ruler with white markings in millimeters. The ruler is oriented vertically, with the 0 mark at the top and the 100 mm mark at the bottom. The component's length is approximately 100 mm.</p>
<p><b>Solder Board-Component View 9</b></p>	 <p>A photograph of the same green PCB component, labeled 'View 9'. This view shows a circular lens or camera module on the left side of the component. The rest of the component is similar to View 8, showing various electronic components and a connector. It is placed on a blue textured background next to a black ruler with white markings in millimeters. The ruler is oriented vertically, with the 0 mark at the top and the 100 mm mark at the bottom. The component's length is approximately 100 mm.</p>

**Solder  
Board-Component  
View 10**



**Solder  
Board-Component  
View 11**

