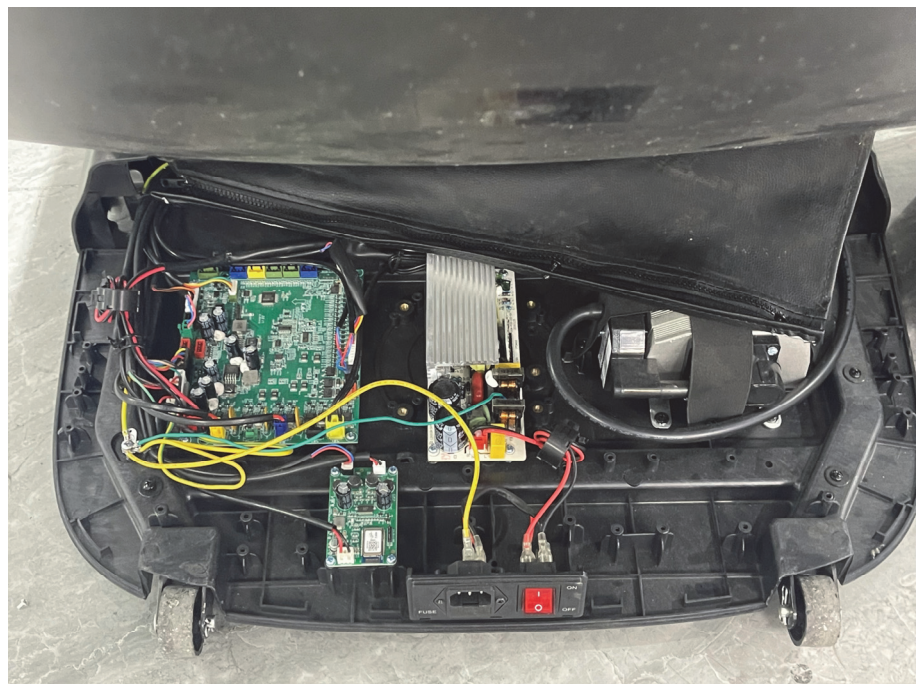


EXHIBIT 3 - EUT INTERNAL PHOTOGRAPHS

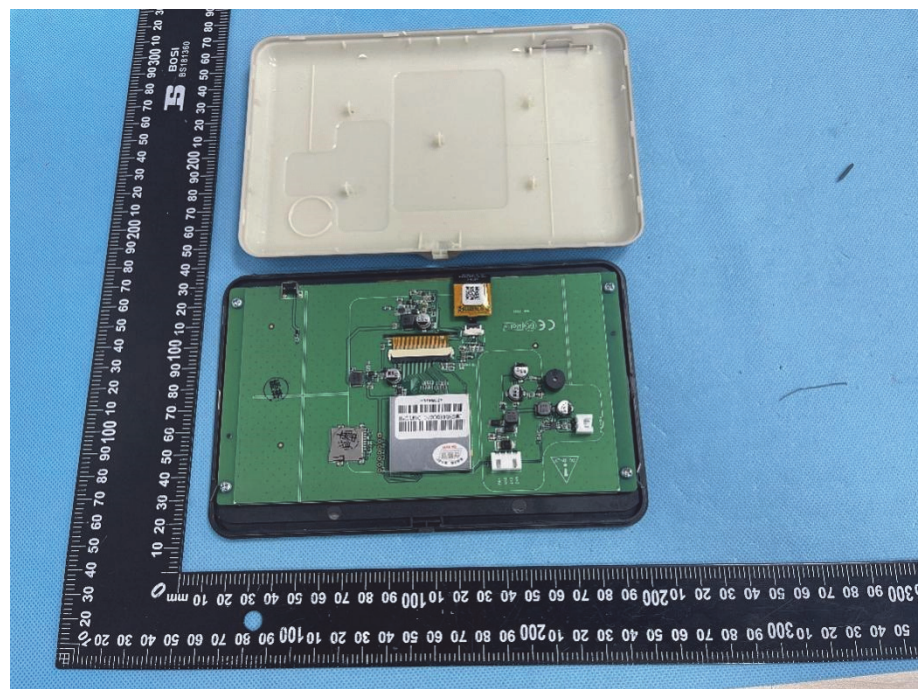
**EUT Housing and
Board View 1**



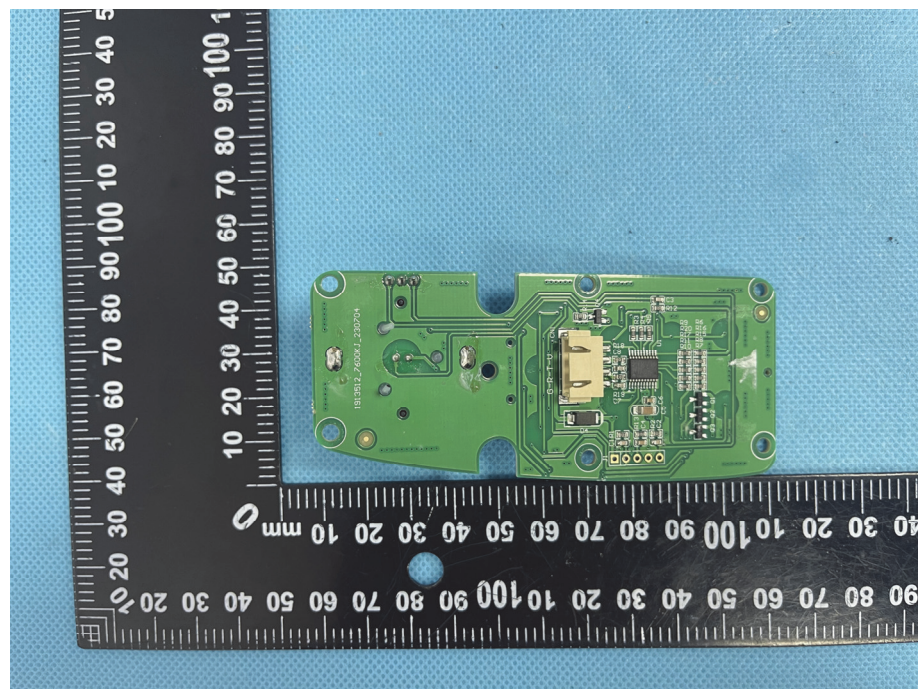
**EUT Housing and
Board View 2**



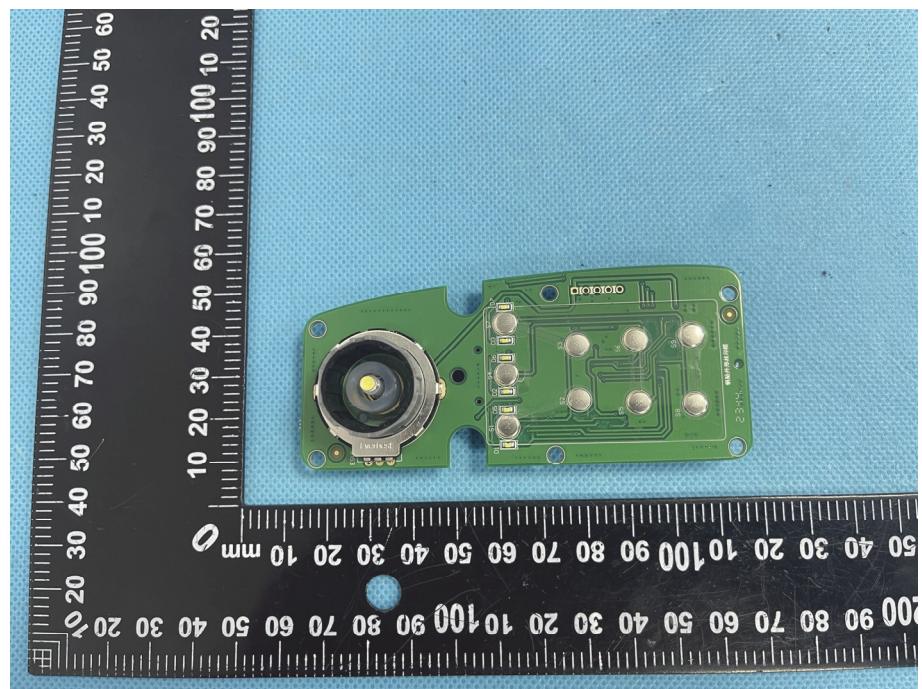
**EUT Housing and
Board View 3**



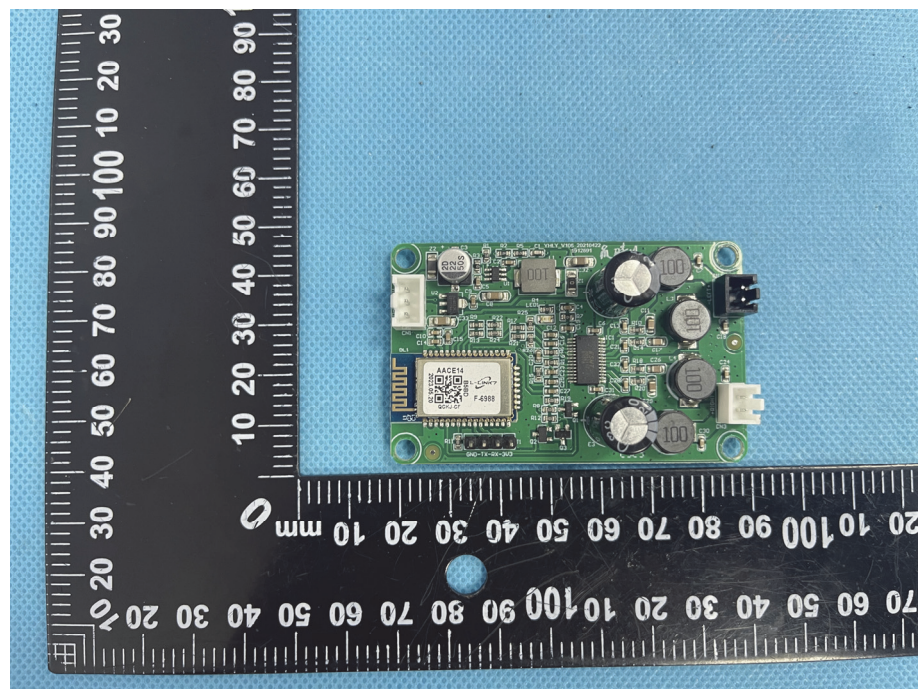
**Solder
Board-Component
View 1**

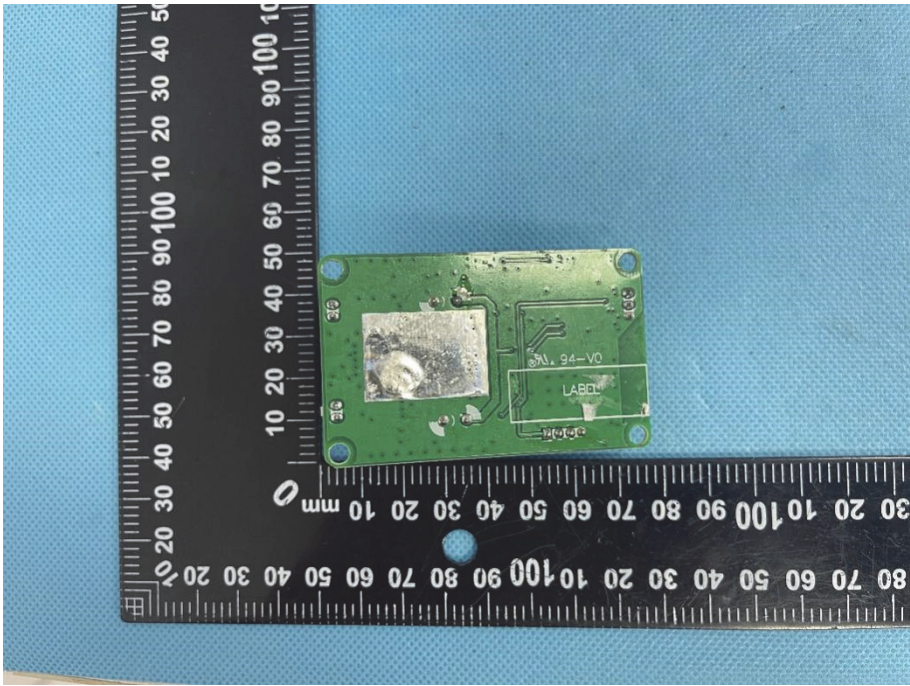
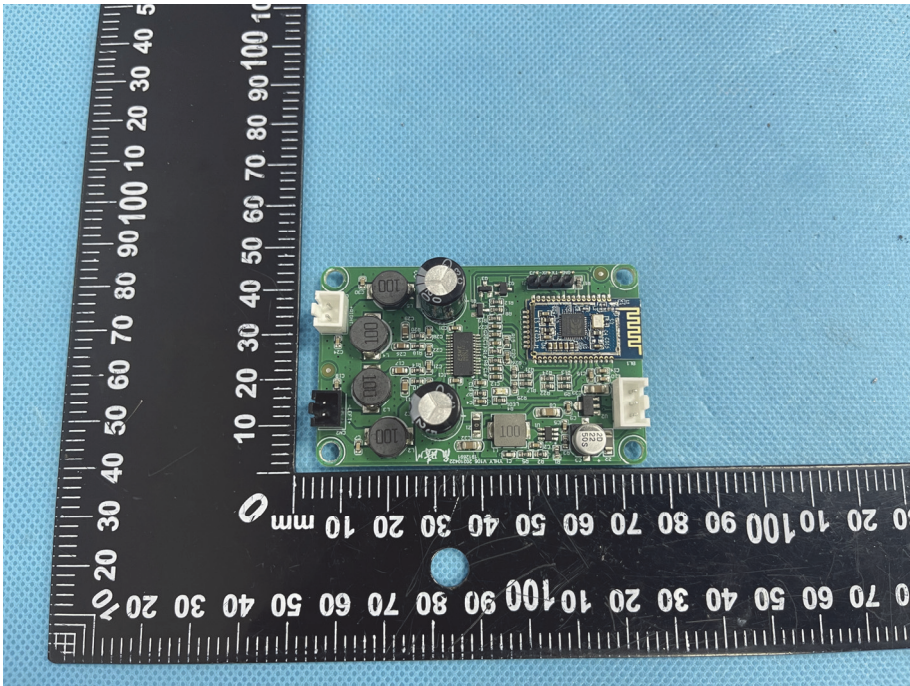


**Solder
Board-Component
View 2**



**Solder
Board-Component
View 3**



<p>Solder Board-Component View 4</p>	 A photograph of a small green printed circuit board (PCB) component, likely a solder mask or a small board, placed on a blue textured surface. The component is rectangular and features a central square area with a silver-colored solder mask. To the right of this area, there is a small rectangular component with the text "94-V0" and "LABOR" printed on it. The board is surrounded by a black L-shaped ruler with white markings in millimeters, indicating its size. The ruler shows the component is approximately 40mm wide and 30mm high.
<p>Solder Board-Component View 5</p>	 A photograph of a larger green PCB component, likely a power supply board, placed on a blue textured surface. The board is populated with various electronic components, including several electrolytic capacitors, a transformer, and a central integrated circuit. The board is surrounded by a black L-shaped ruler with white markings in millimeters, indicating its size. The ruler shows the component is approximately 100mm wide and 60mm high.