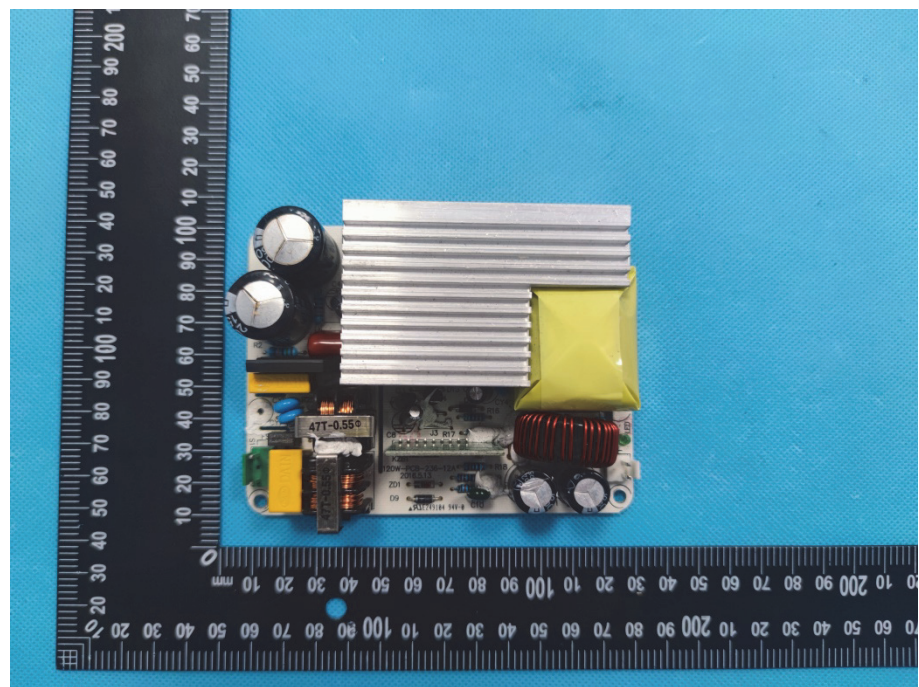
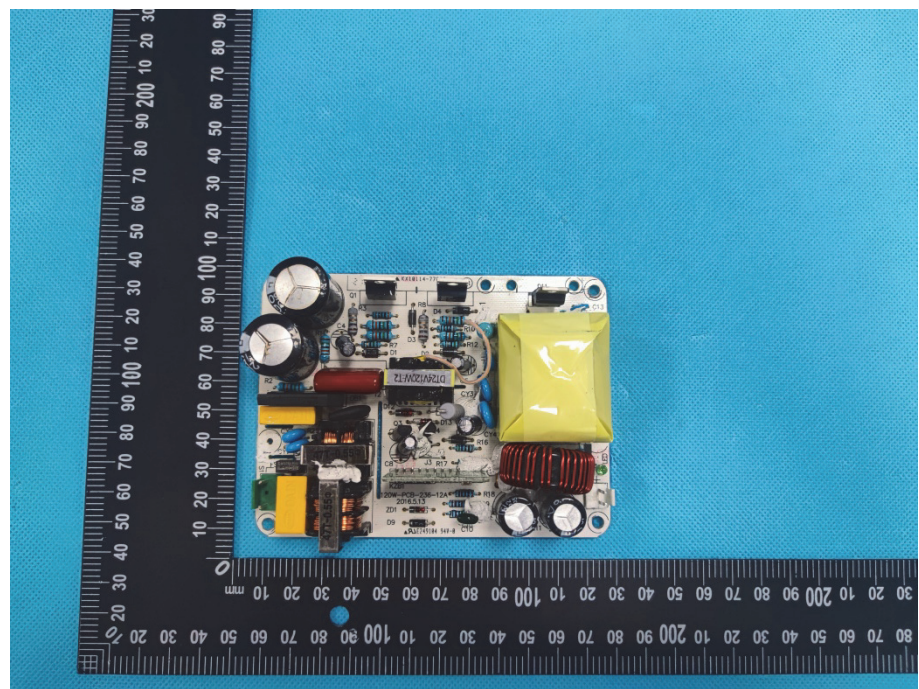
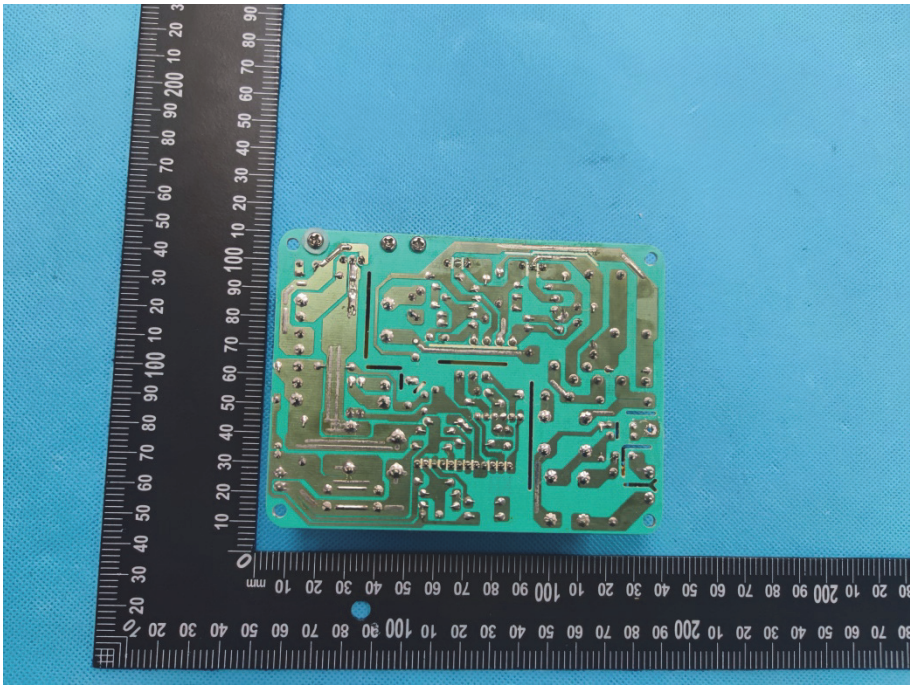
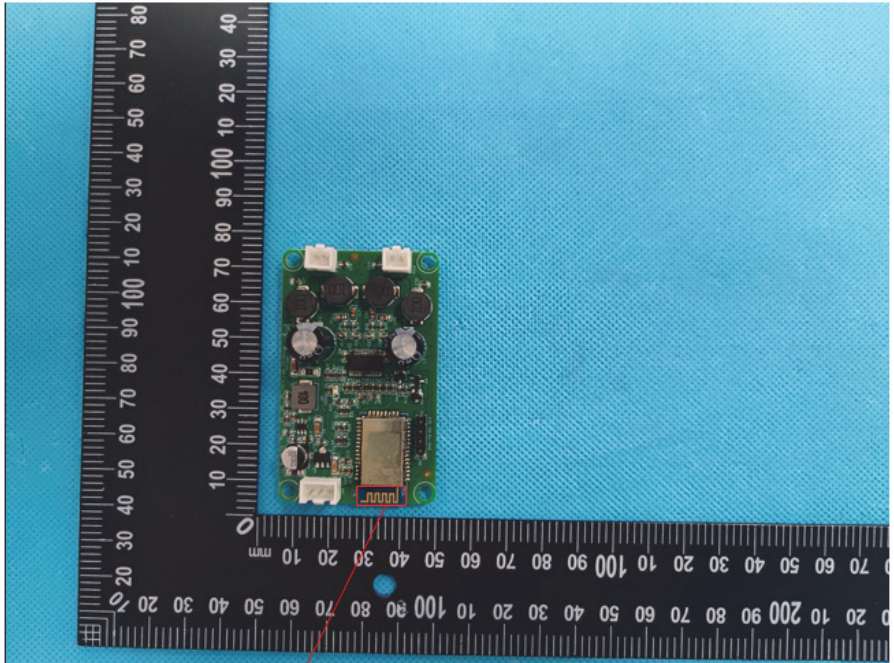


**Solder
Board-Component
View 6**



**Solder
Board-Component
View 7**



<p>Solder Board-Component View 8</p>	 <p>A photograph of a green printed circuit board (PCB) with various electronic components and solder joints. The board is placed on a blue textured surface next to a black ruler with white markings in millimeters. The ruler is oriented vertically on the left side of the board, showing measurements from 0 to 100 mm. The board itself is roughly rectangular and contains several integrated circuits, resistors, and other components, all interconnected with a network of solder joints.</p>
<p>Antenna View</p>	 <p>A photograph of a green PCB, similar to the one in the first image, but showing a different view. It features a prominent antenna structure on the bottom edge. The board is placed on a blue textured surface next to a black ruler with white markings in millimeters. The ruler is oriented vertically on the left side of the board, showing measurements from 0 to 100 mm. A red rectangular box highlights the antenna structure, and a red line points from a label 'BT Antenna' located below the image to this box.</p> <p data-bbox="580 1615 769 1671">BT Antenna</p>