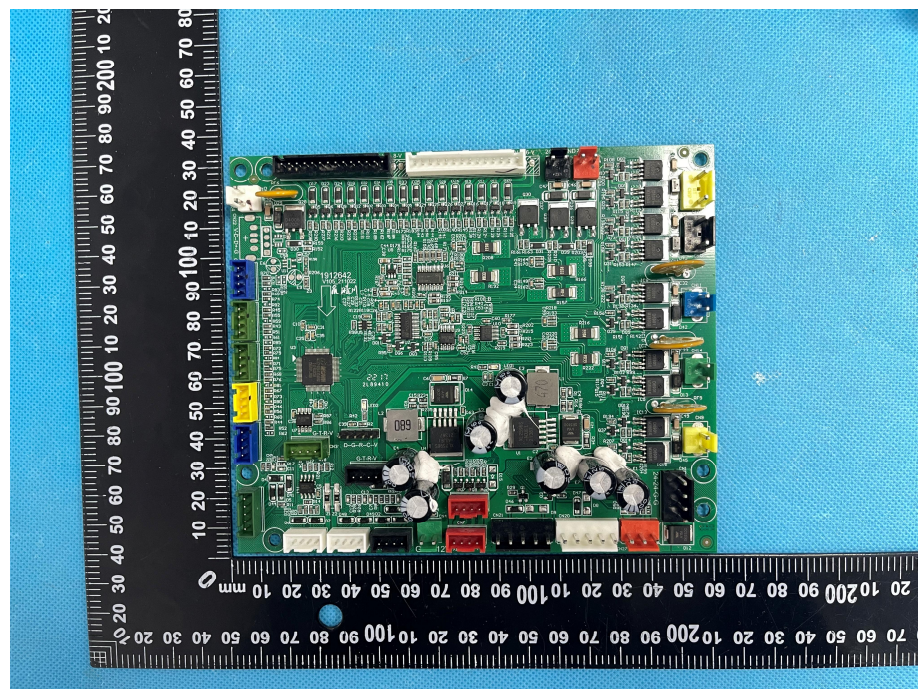
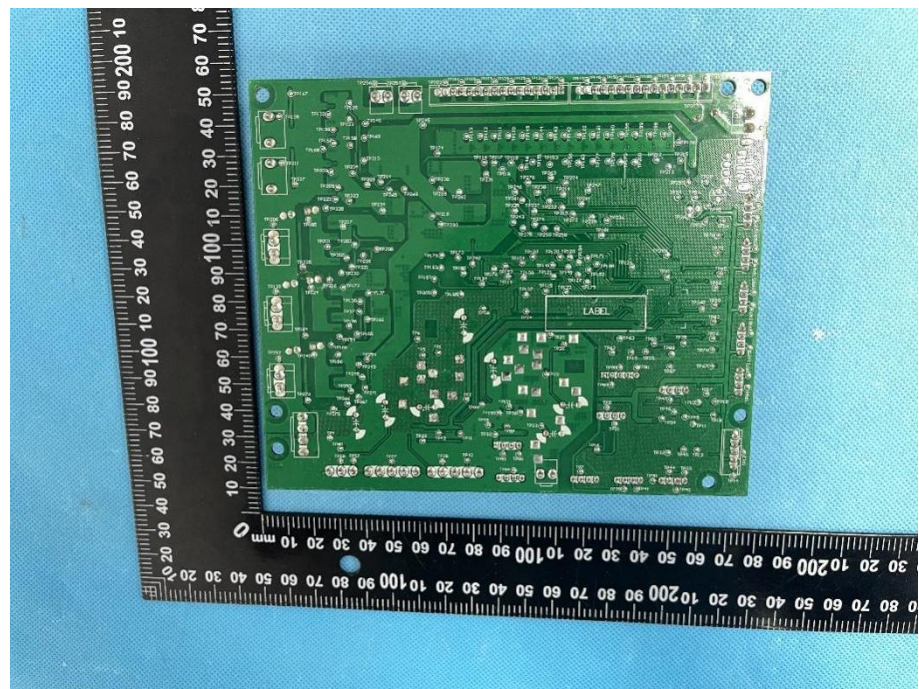
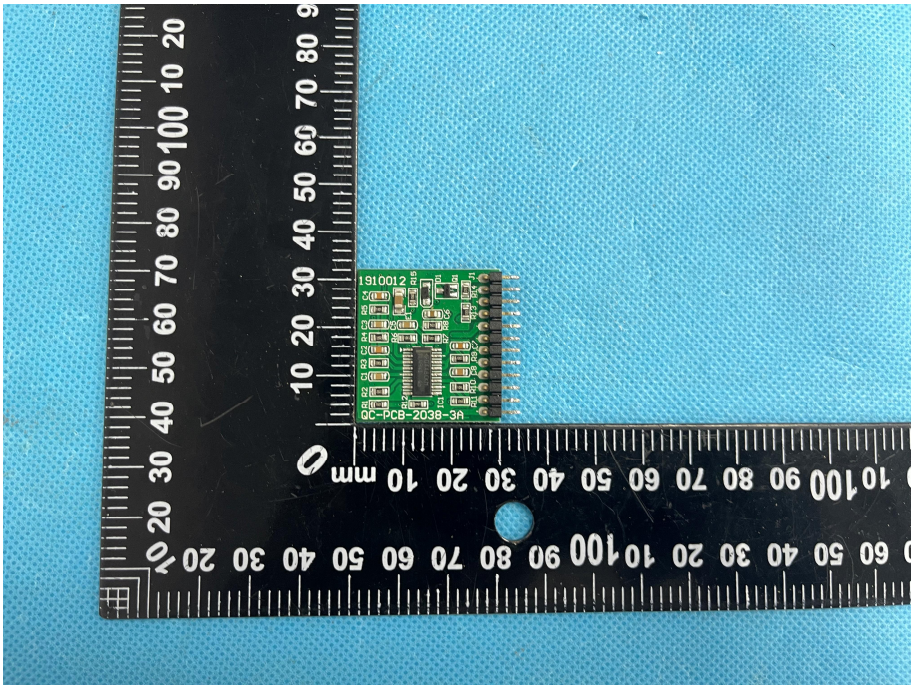
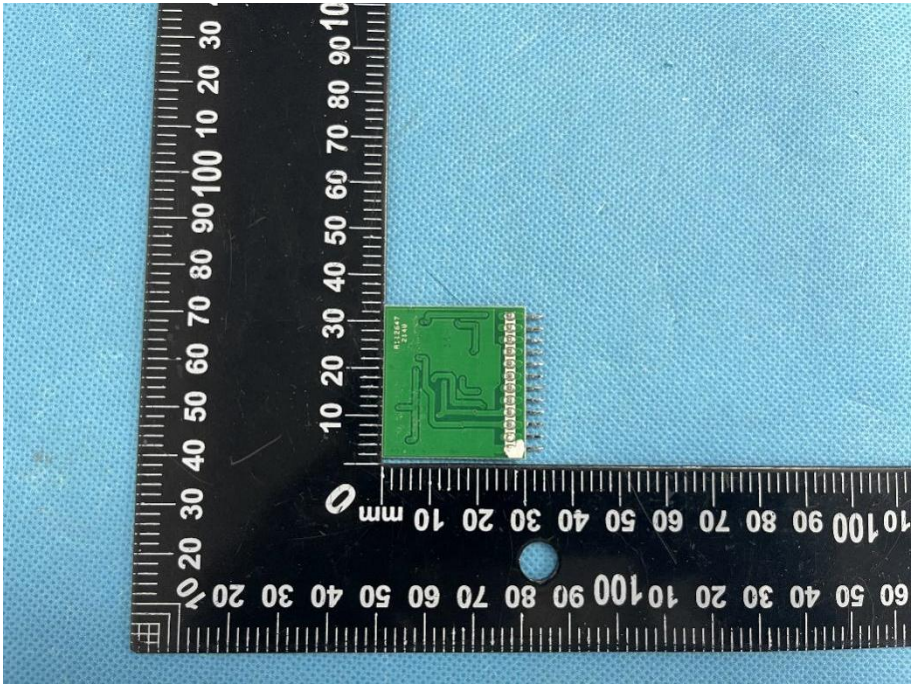


**Solder
Board-Component
View 8**



**Solder
Board-Component
View 9**



<p>Solder Board-Component View 10</p>	 <p>A photograph of a green PCB component with a dense array of pins, mounted on a blue textured surface. A black ruler with white markings is placed to the left of the component for scale. The ruler shows measurements in millimeters, with markings every 10 mm and sub-markings every 1 mm. The component is positioned such that its left edge aligns with the 0 mm mark on the ruler. The component's length is approximately 100 mm, and its width is approximately 20 mm. The component has a complex layout of components, including a large integrated circuit (IC) with a label '2100161' and various other smaller components and traces.</p>
<p>Solder Board-Component View 11</p>	 <p>A photograph of a green PCB component with a dense array of pins, mounted on a blue textured surface. A black ruler with white markings is placed to the left of the component for scale. The ruler shows measurements in millimeters, with markings every 10 mm and sub-markings every 1 mm. The component is positioned such that its left edge aligns with the 0 mm mark on the ruler. The component's length is approximately 100 mm, and its width is approximately 20 mm. The component has a complex layout of components, including a large integrated circuit (IC) with a label '2100161' and various other smaller components and traces.</p>