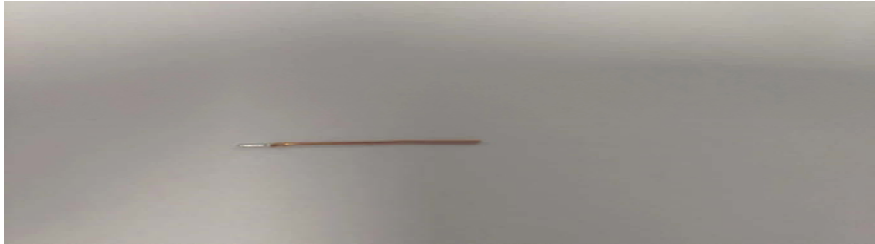


Product specification	
	Antenna module on the system board
Frequenc Range	2402 ~ 2480GHz
Ant. Port Input Pwr. (dBm)	0 (Typ. BT class 2 output power)
Tot. Rad. Pwr. (dBm)	-1.2 (Input pwr - loss pwr)
Peak EIRP(dBm)	1.2
Directivity (dBi)	1 (all direction antenna)
Efficiency (dB)	60.80%
Gain (dBi)	3.87
Maximum Power (dBm)	-2.0(XY-plane)
Minimum Power (dBm)	0.5(XY-plane)
Avg. Power (dBm)	-0.5(XY-plane)
Input Impedence (ohm)	50
Polarization Type	V ertical & Horizontal

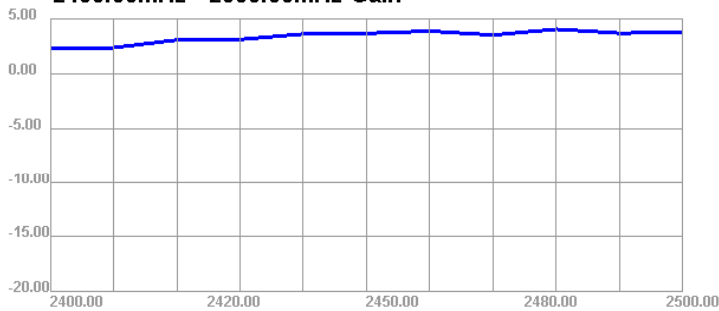
Antenna Layout & module on the system board



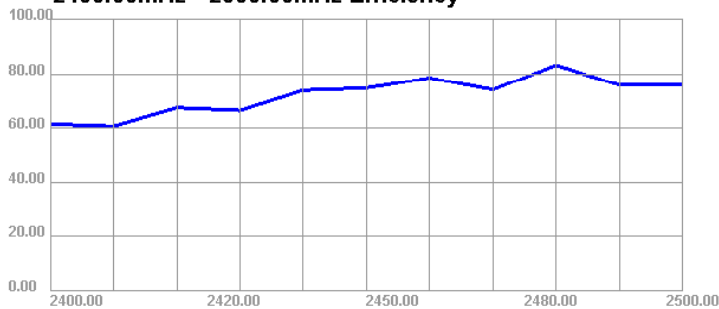
Antenna specifications	
length	22.5mm
diameter	0.55mm

Passive Test For 标准件2.4												
Freq (MHz)	Effi (%)	Effi (dB)	Gain (dBi)	Gain (dBd)	UHS (%)	DHS (%)	Max (dB)	Min (dB)	irectivity (dBi)	Beamwidth (3dB)	AttH (dB)	AttV (dB)
2400	61.26	-2.13	2.34	0.19	24.692	36.567	2.34	-12.73	4.47	15	48.6	48.47
2410	60.42	-2.19	2.36	0.21	24.248	36.168	2.36	-12.85	4.55	15	48.26	48.21
2420	67.3	-1.72	3.06	0.91	26.822	40.479	3.06	-12.66	4.78	15	48.44	48.3
2430	66.28	-1.79	3.11	0.96	26.168	40.111	3.11	-11.81	4.9	0	48.32	48.37
2440	73.78	-1.32	3.6	1.45	28.793	44.986	3.6	-11.27	4.92	0	48.88	48.78
2450	74.63	-1.27	3.67	1.52	28.97	45.656	3.67	-12.84	4.94	0	49.02	48.99
2460	78.49	-1.05	3.87	1.72	30.493	48	3.87	-14.51	4.92	0	49.17	49.07
2470	74.02	-1.31	3.52	1.37	28.835	45.18	3.52	-16.05	4.82	0	49.2	49.16
2480	83.27	-0.79	3.84	1.89	32.481	50.792	4.04	-16.77	4.84	0	49.43	49.36
2490	75.73	-1.21	3.69	1.54	29.34	46.388	3.69	-17.21	4.89	0	49.18	49.01
2500	75.96	-1.19	3.75	1.6	28.94	47.022	3.75	-17.18	4.95	0	48.65	48.53

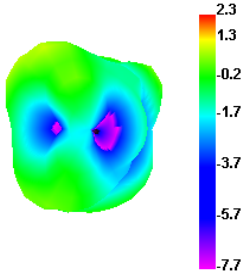
2400.00MHz - 2500.00MHz Gain



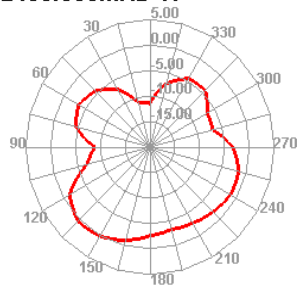
2400.00MHz - 2500.00MHz Efficiency



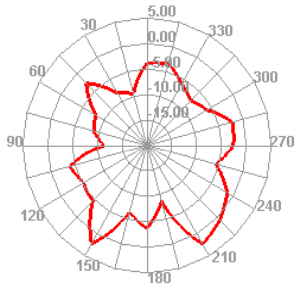
2400.000MHz



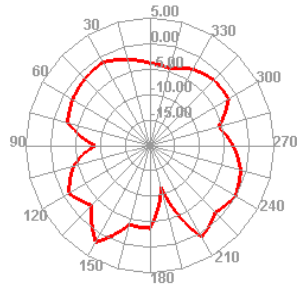
2400.000MHz H



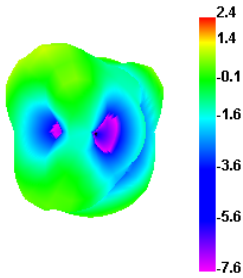
2400.000MHz E1



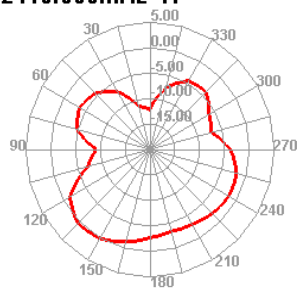
2400.000MHz E2



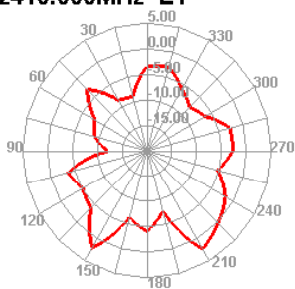
2410.000MHz



2410.000MHz H



2410.000MHz E1



2410.000MHz E2

