

FCC TEST REPORT

Client Name : Hangzhou Vision Insight Technology Co., Ltd.
Address : Room 203, South Floor 2, Building 5, 90 Wensan Road,
Xihu District, Hangzhou, China
Product Name : Smart Indoor PTZ Camera
Date : Jun. 27, 2022



Shenzhen Anbotek Compliance Laboratory Limited

Contents

1. General Information	5
1.1. Client Information	5
1.2. Description of Device (EUT)	5
1.3. Auxiliary Equipment Used During Test	7
1.4. Description of Test Modes	7
1.5. List of channels	8
1.6. Description Of Test Setup	9
1.7. Test Equipment List	10
1.8. Measurement Uncertainty	11
1.9. Description of Test Facility	11
2. Summary of Test Results	12
3. Conducted Emission Test	13
3.1. Test Standard and Limit	13
3.2. Test Setup	13
3.3. Test Procedure	13
4. Radiation Spurious Emission and Band Edge	18
4.1. Test Standard and Limit	18
4.2. Test Setup	18
4.3. Test Procedure	19
4.4. Test Data	20
5. Maximum Output Power Test	30
5.1. Test Standard and Limit	30
5.2. Test Setup	30
5.3. Test Procedure	30
5.4. Test Data	30
6. 6DB Occupy Bandwidth Test	31
6.1. Test Standard and Limit	31
6.2. Test Setup	31
6.3. Test Procedure	31
6.4. Test Data	31
7. Power Spectral Density Test	32
7.1. Test Standard and Limit	32
7.2. Test Setup	32
7.3. Test Procedure	32
7.4. Test Data	32
8. 100kHz Bandwidth of Frequency Band Edge Requirement	33
8.1. Test Standard and Limit	33
8.2. Test Setup	33

8.3. Test Procedure 33

8.4. Test Data 33

9. Antenna Requirement 34

9.1. Test Standard and Requirement 34

9.2. Antenna Connected Construction 34

APPENDIX I -- TEST SETUP PHOTOGRAPH 35

APPENDIX II -- EXTERNAL PHOTOGRAPH 37

APPENDIX III -- INTERNAL PHOTOGRAPH 37

APPENDIX IV – Appendix Test Data 47

TEST REPORT

Applicant : Hangzhou Vision Insight Technology Co., Ltd.
Manufacturer : Hangzhou Vision Insight Technology Co., Ltd.
Product Name : Smart Indoor PTZ Camera
Model No. : A31P, A31C, A13S, A31U, A31P-Kit, A31C-Kit, A31S-Kit, A31U-Kit
Trade Mark : N/A
Rating(s) : Input: 5V= 1A
Test Standard(s) : FCC Part15 Subpart C, Section 15.247
Test Method(s) : ANSI C63.10: 2020, KDB 558074 D01 15.247 Meas Guidance v05r02

The device described above is tested by Shenzhen Anbotek Compliance Laboratory Limited to determine the maximum emission levels emanating from the device and the severe levels of the device can endure and its performance criterion. The measurement results are contained in this test report and Shenzhen Anbotek Compliance Laboratory Limited is assumed full of responsibility for the accuracy and completeness of these measurements. Also, this report shows that the EUT (Equipment Under Test) is technically compliant with the FCC Part 15 Subpart C requirements.

This report applies to above tested sample only and shall not be reproduced in part without written approval of Shenzhen Anbotek Compliance Laboratory Limited.

Date of Receipt Jun. 07, 2022
Date of Test Jun. 07~13, 2022

Prepared by 

(Ella Liang)

Approved & Authorized Signer 

(Kingkong Jin)

1. General Information

1.1. Client Information

Applicant	:	Hangzhou Vision Insight Technology Co., Ltd.
Address	:	Room 203, South Floor 2, Building 5, 90 Wensan Road, Xihu District, Hangzhou, China
Manufacturer	:	Hangzhou Vision Insight Technology Co., Ltd.
Address	:	Room 203, South Floor 2, Building 5, 90 Wensan Road, Xihu District, Hangzhou, China
Factory	:	Hangzhou Vision Insight Technology Co., Ltd.
Address	:	Room 203, South Floor 2, Building 5, 90 Wensan Road, Xihu District, Hangzhou, China

1.2. Description of Device (EUT)

Product Name	:	Smart Indoor PTZ Camera
Model No.	:	A31P, A31C, A13S, A31U, A31P-Kit, A31C-Kit, A31S-Kit, A31U-Kit (Note: All samples are the same except the model number and appearance, so we prepare "A31P" for test only.)
Trade Mark	:	N/A
Test Power Supply	:	AC 120V, 60Hz for Adapter/ AC 240V, 60Hz for Adapter
Test Sample No.	:	1-2-1(Normal Sample), 1-2-2(Engineering Sample)
Product Description	Operation Frequency:	WiFi 2.4G: 802.11b/ g/ n(HT20): 2412-2462MHz 802.11n (HT40): 2422-2452MHz WiFi 5.2G: 5180MHz~5240MHz WiFi 5.8G: 5745MHz~5825MHz
	Number of Channel:	WiFi 2.4G: 802.11b/ g/ n(HT20): 11 Channels 802.11n (HT40): 7 Channels WiFi 5.2G: 4 Channels for 802.11a/n(HT20)/ac(HT20) 2 Channels for 802.11n(HT40)/ac(HT40) WiFi 5.8G: 5 Channels for 802.11a/n(HT20)/ac(HT20) 2 Channels for 802.11n(HT40)/ac(HT40)
	Modulation Type:	WiFi 2.4G: CCK, DQPSK, DBPSK for DSSS; 64QAM, 16QAM, QPSK, BPSK for OFDM WiFi 5G: OFDM with BPSK, QPSK, 16QAM, 64QAM, 256QAM
	Antenna Type:	FPC antenna

	Antenna Gain(Peak):	WiFi 2.4G: 2 dBi (Provided by customer) WiFi 5.2G: 3 dBi (Provided by customer) WiFi 5.8G: 3 dBi (Provided by customer)
	Adapter:	Model No: XED-UL050100CU Input: 100-240V~50/ 60Hz 0.2A Output: 5V= 1.0A
<p>Remark: 1) For a more detailed features description, please refer to the manufacturer's specifications or the User's Manual. 2) This report is for WIFI 2.4G module.</p>		

1.3. Auxiliary Equipment Used During Test

N/A	:	
-----	---	--

1.4. Description of Test Modes

To investigate the maximum EMI emission characteristics generates from EUT, the test system was pre-scanning tested base on the consideration of following EUT operation mode or test configuration mode which possible have effect on EMI emission level. Each of these EUT operation mode(s) or test configuration mode(s) mentioned above was evaluated respectively.

RADIATED EMISSION TEST (BELOW 1GHz):

Pre-Scan has been conducted to determine the worst-case mode from all possible combinations between available modulations, data rates, XYZ axis and antenna ports (if EUT with antenna diversity architecture).

Following channel(s) was (were) selected for the final test as listed below.

Mode	Available Channel	Test Channel	Modulation Tech.	Data Rate (Mbps)
802.11b	1 to 11	1, 6, 11	OFDM	6.5

For the test results, only the worst case was shown in test report.

RADIATED EMISSION TEST (ABOVE 1GHz):

Pre-Scan has been conducted to determine the worst-case mode from all possible combinations between available modulations, data rates, XYZ axis and antenna ports (if EUT with antenna diversity architecture).

Following channel(s) was (were) selected for the final test as listed below.

Mode	Available Channel	Test Channel	Modulation Tech.	Data Rate (Mbps)
802.11b	1 to 11	1, 6, 11	OFDM	6.5

POWER LINE CONDUCTED EMISSION TEST:

The EUT was tested with the following mode

Mode	Available Channel	Test Channel	Modulation Tech.	Data Rate (Mbps)
802.11b	1 to 11	1, 6, 11	DSSS	1.0
802.11g	1 to 11	1, 6, 11	OFDM	6.0
802.11n (HT20)	1 to 11	1, 6, 11	OFDM	6.5
802.11n (HT40)	3 to 9	3, 6, 9	OFDM	13.5

BANDEDGE MEASUREMENT:

Pre-Scan has been conducted to determine the worst-case mode from all possible combinations between available modulations, data rates and antenna ports (if EUT with antenna diversity architecture).

Following channel(s) was (were) selected for the final test as listed below.

Mode	Available Channel	Test Channel	Modulation Tech.	Data Rate (Mbps)
802.11b	1 to 11	1, 6, 11	DSSS	1.0
802.11g	1 to 11	1, 6, 11	OFDM	6.0
802.11n (HT20)	1 to 11	1, 6, 11	OFDM	6.5
802.11n (HT40)	3 to 9	3, 6, 9	OFDM	13.5

ANTENNA PORT CONDUCTED MEASUREMENT:

This item includes all test value of each mode, but only includes spectrum plot of worst value of each mode.

Pre-Scan has been conducted to determine the worst-case mode from all possible combinations between available modulations, data rates and antenna ports (if EUT with antenna diversity architecture).

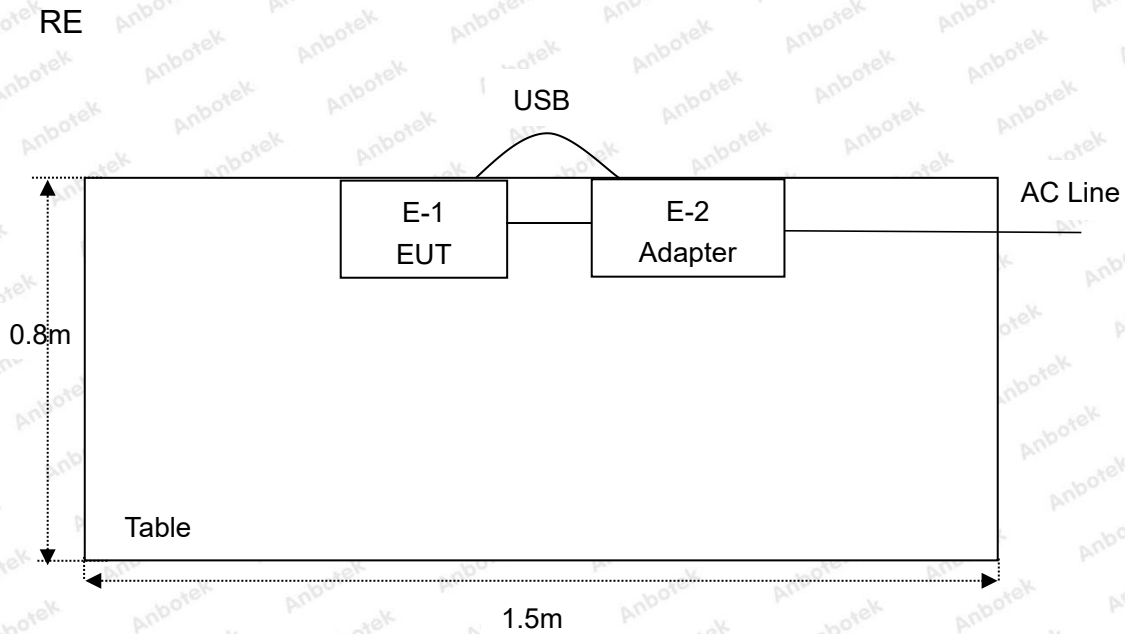
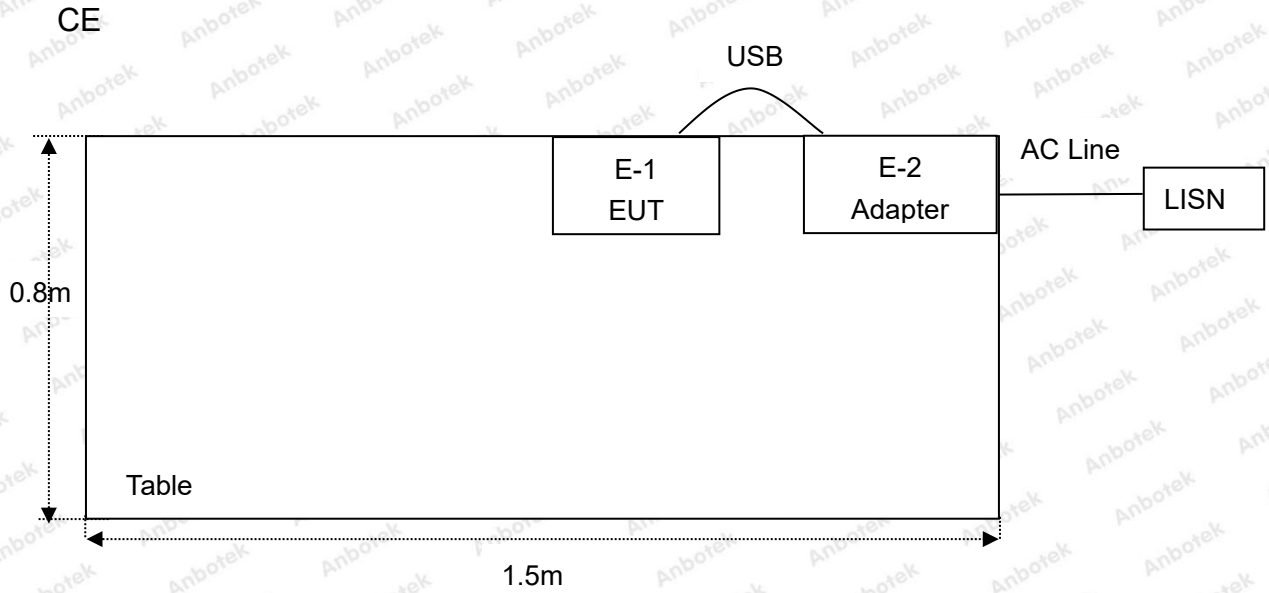
Following channel(s) was (were) selected for the final test as listed below.

Mode	Available Channel	Test Channel	Modulation Tech.	Data Rate (Mbps)
802.11b	1 to 11	1, 6, 11	DSSS	1.0
802.11g	1 to 11	1, 6, 11	OFDM	6.0
802.11n (HT20)	1 to 11	1, 6, 11	OFDM	6.5
802.11n (HT40)	3 to 9	3, 6, 9	OFDM	13.5

1.5. List of channels

Channel	Freq. (MHz)	Channel	Freq. (MHz)	Channel	Freq. (MHz)	Channel	Freq. (MHz)
01	2412	04	2427	07	2442	10	2457
02	2417	05	2432	08	2447	11	2462
03	2422	06	2437	09	2452		

1.6. Description Of Test Setup



1.7. Test Equipment List

Item	Equipment	Manufacturer	Model No.	Serial No.	Last Cal.	Cal. Interval
1.	L.I.S.N. Artificial Mains Network	Schwarzbeck	NSLK 8127	8127386	Sept. 7, 2021	1 Year
2.	EMI Test Receiver	Rohde & Schwarz	ESPI	101604	Sept. 7, 2021	1 Year
3.	Spectrum Analysis	Keysight	N9020A	MY53100616	Nov.11 , 2021	1 Year
4.	Preamplifier	SKET Electronic	BK1G18G30 D	KD17503	Oct. 25, 2021	1 Year
5.	Pre-amplifier	EMtrace	RP01A	50017	Sept. 7, 2021	1 Year
6.	Double Ridged Horn Antenna	Instruments corporation	GTH-0118	351600	Nov. 02, 2020	2 Year
7.	Bilog Broadband Antenna	Schwarzbeck	VULB9163	01417	Nov. 02, 2020	2 Year
8.	Loop Antenna	Schwarzbeck	FMZB1519B	00053	Nov. 02, 2020	2 Year
9.	Test Software	Ferrari Technology	EZ-EMC	N/A	N/A	N/A
10.	Switch box	Meike	/	/	Nov. 10, 2021	1 Year
11.	Power Sensor box	Meike	/	/	Oct. 23, 2021	1 Year
12.	MXG RF Vector Signal Generator	Agilent	N5182A	MY47420822	Feb. 28, 2022	1 Year
13.	Signal Generator	Agilent	E4425B	GB39340038	Oct. 23, 2021	1 Year
14.	DC Power Supply	Longwei	TPR-6420D	020215240	N/A	N/A



1.8. Measurement Uncertainty

Radiation Uncertainty	:	Ur = 3.9 dB (Horizontal)
	:	Ur = 3.8 dB (Vertical)
Conduction Uncertainty	:	Uc = 3.4 dB

1.9. Description of Test Facility

The test facility is recognized, certified, or accredited by the following organizations:

FCC-Registration No.: 184111

Shenzhen Anbotek Compliance Laboratory Limited, EMC Laboratory has been registered and fully described in a report filed with the (FCC) Federal Communications Commission. The acceptance letter from the FCC is maintained in our files. Registration No. 184111.

ISED-Registration No.: 8058A

Shenzhen Anbotek Compliance Laboratory Limited, EMC Laboratory has been registered and fully described in a report filed with the (ISED) Innovation, Science and Economic Development Canada. The acceptance letter from the ISED is maintained in our files. Registration 8058A.

Test Location

Shenzhen Anbotek Compliance Laboratory Limited.

1/F, Building D, Sogood Science and Technology Park, Sanwei community, Hangcheng Street, Bao'an District, Shenzhen, Guangdong, China.518102

2. Summary of Test Results

Standard Section	Test Item	Result
15.203/15.247(c)	Antenna Requirement	PASS
15.207	Conducted Emission	PASS
15.205/15.209	Spurious Emission	PASS
15.247(b)(3)	Conducted Peak Output Power	PASS
15.247(a)(2)	6dB Occupied Bandwidth	PASS
15.247(e)	Power Spectral Density	PASS
15.247(d)	Band Edge	PASS
Remark: "N/A" is an abbreviation for Not Applicable.		

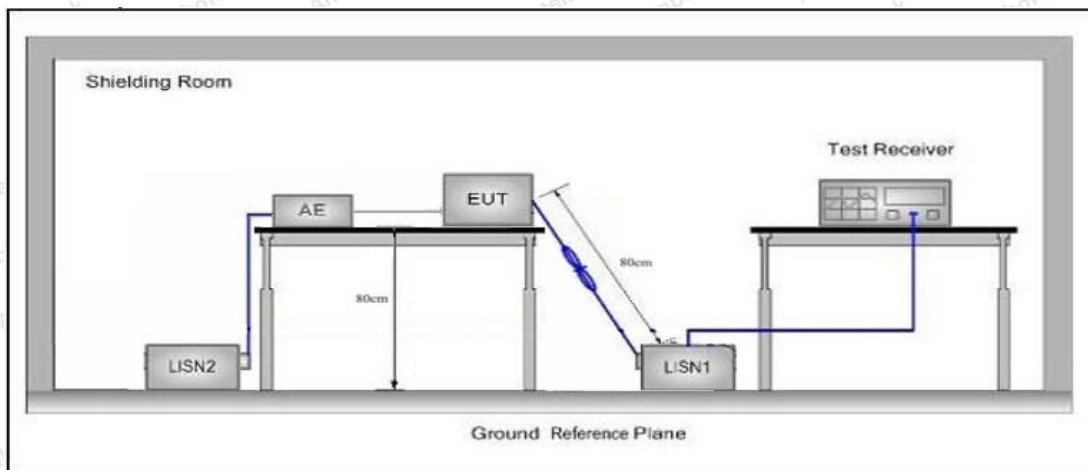
3. Conducted Emission Test

3.1. Test Standard and Limit

Test Standard	FCC Part15 Section 15.207		
Test Limit	Frequency	Maximum RF Line Voltage (dBuV)	
		Quasi-peak Level	Average Level
	150kHz~500kHz	66 ~ 56 *	56 ~ 46 *
	500kHz~5MHz	56	46
5MHz~30MHz	60	50	

Remark: (1) *Decreasing linearly with logarithm of the frequency.
 (2) The lower limit shall apply at the transition frequency.

3.2. Test Setup



3.3. Test Procedure

The EUT system is connected to the power mains through a line impedance stabilization network (L.I.S.N.). This provides a 50ohm coupling impedance for the EUT system. Please refer the block diagram of the test setup and photographs. Both sides of AC line are checked to find out the maximum conducted emission. In order to find the maximum emission levels, the relative positions of equipment and all of the interface cables shall be changed according to FCC ANSI C63.10: 2020 on Conducted Emission Measurement.

The bandwidth of test receiver (ESCI) set at 9kHz.

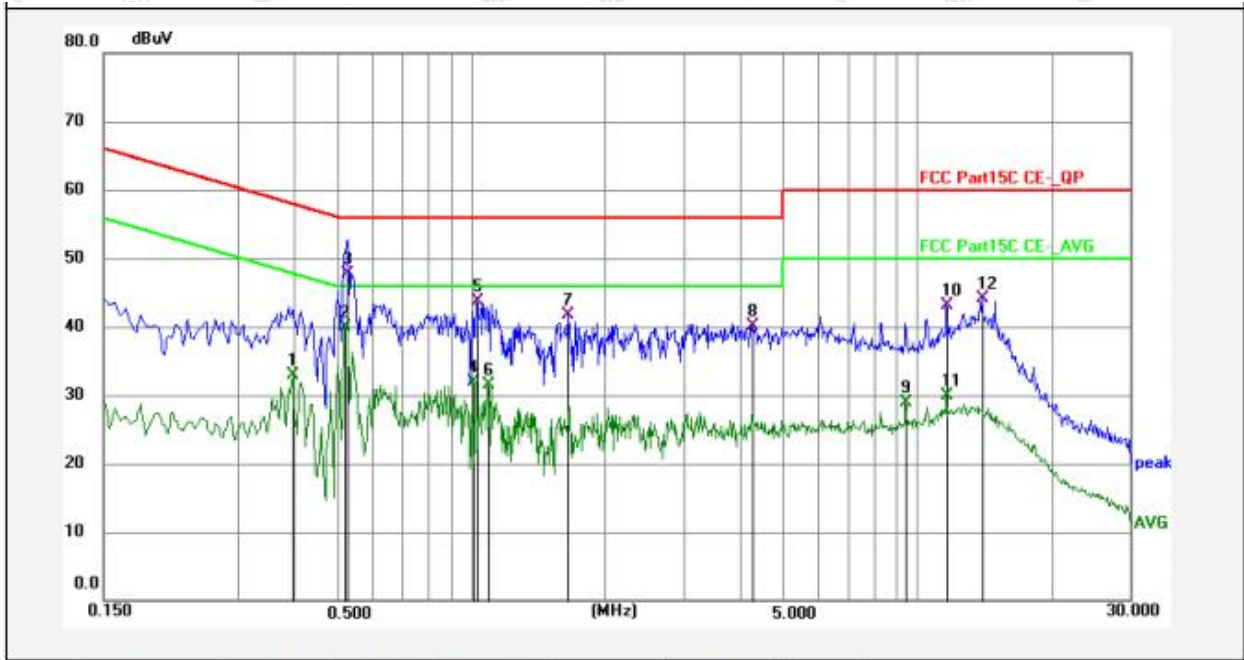
The frequency range from 150kHz to 30MHz is checked.

3.4. Test Data

During the test, pre-scan all modes, only the worst case is recorded in the report.

Conducted Emission Test Data

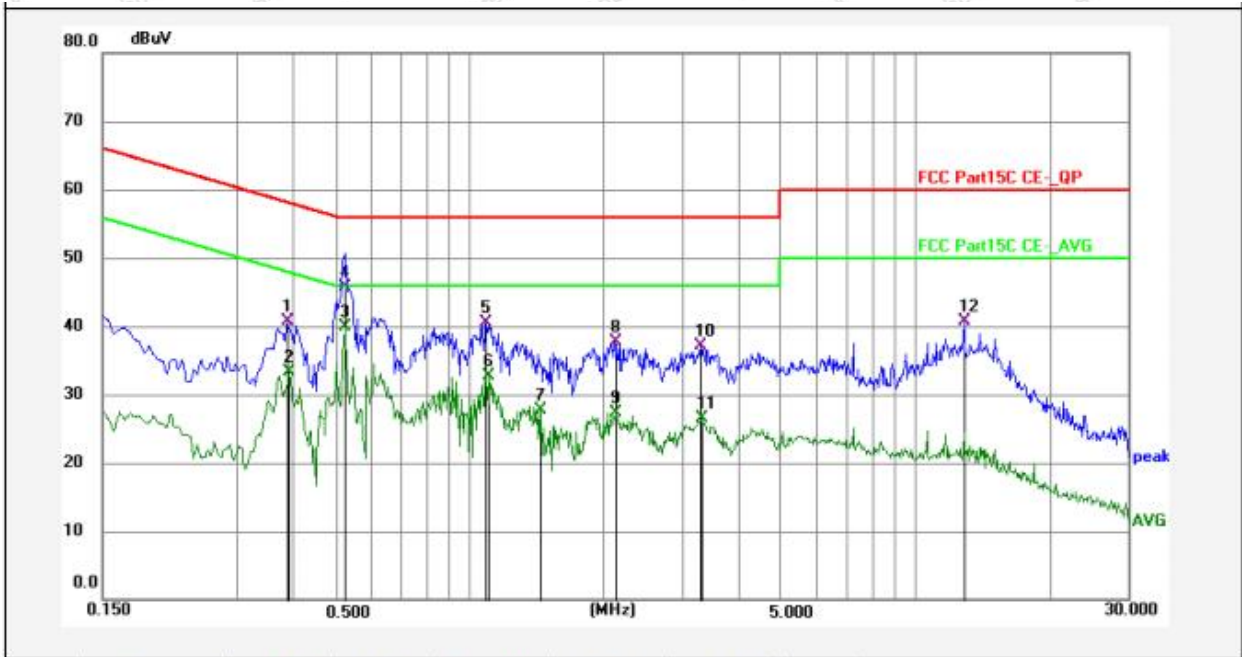
Test Site: 1# Shielded Room
 Operating Condition: 802.11b CH01
 Test Specification: AC 120V, 60Hz for Adapter
 Comment: Live Line
 Tem.: 22.3°C Hum.: 50%



No.	Freq. (MHz)	Reading (dBuV)	Factor (dB)	Result (dBuV)	Limit (dBuV)	Over Limit (dB)	Detector	Remark
1	0.3975	32.02	0.88	32.90	47.91	-15.01	AVG	
2	0.5190	38.98	0.87	39.85	46.00	-6.15	AVG	
3	0.5280	46.86	0.87	47.73	56.00	-8.27	QP	
4	1.0050	31.01	0.94	31.95	46.00	-14.05	AVG	
5	1.0275	42.74	0.94	43.68	56.00	-12.32	QP	
6	1.0905	30.50	0.94	31.44	46.00	-14.56	AVG	
7	1.6485	40.85	0.93	41.78	56.00	-14.22	QP	
8	4.2675	39.07	0.96	40.03	56.00	-15.97	QP	
9	9.4245	27.97	1.03	29.00	50.00	-21.00	AVG	
10	11.6610	42.19	1.01	43.20	60.00	-16.80	QP	
11	11.6610	28.93	1.01	29.94	50.00	-20.06	AVG	
12	14.0145	43.16	0.99	44.15	60.00	-15.85	QP	

Conducted Emission Test Data

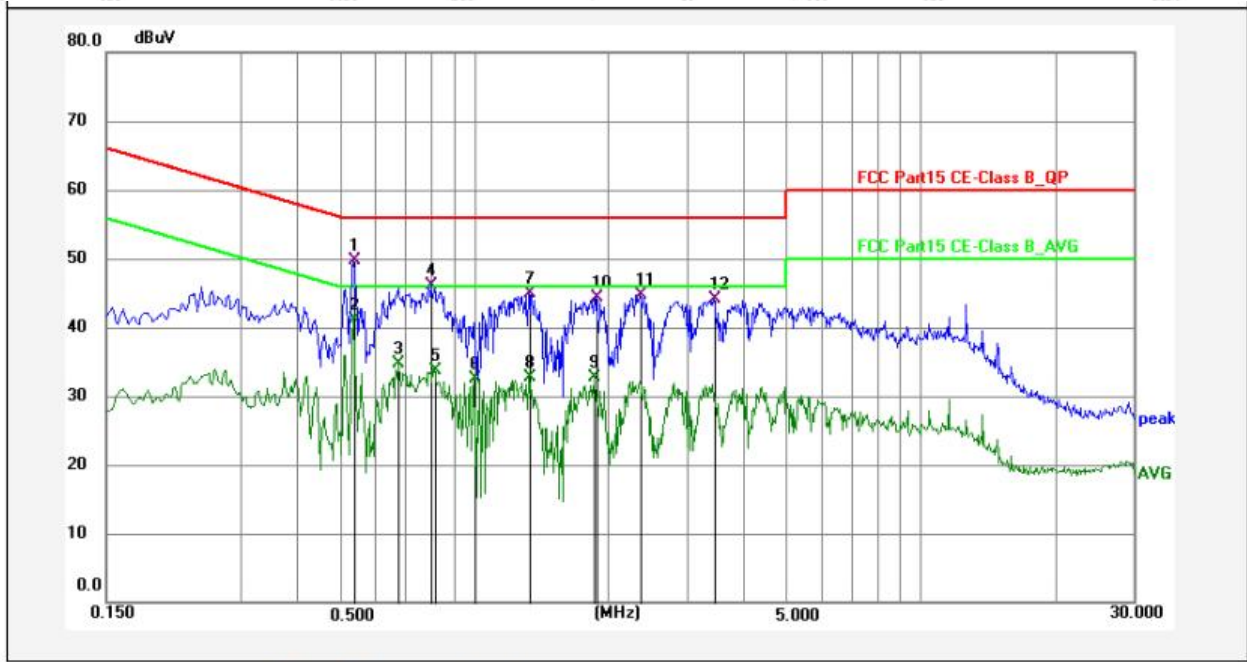
Test Site: 1# Shielded Room
 Operating Condition: 802.11b CH01
 Test Specification: AC 120V, 60Hz for Adapter
 Comment: Neutral Line
 Tem.: 22.3°C Hum.: 50%



No.	Freq. (MHz)	Reading (dBuV)	Factor (dB)	Result (dBuV)	Limit (dBuV)	Over Limit (dB)	Detector	Remark
1	0.3885	39.79	0.83	40.62	58.10	-17.48	QP	
2	0.3930	32.48	0.83	33.31	48.00	-14.69	AVG	
3	0.5233	39.12	0.84	39.96	46.00	-6.04	AVG	
4	0.5235	44.83	0.84	45.67	56.00	-10.33	QP	
5	1.0905	39.70	0.85	40.55	56.00	-15.45	QP	
6	1.1085	31.80	0.85	32.65	46.00	-13.35	AVG	
7	1.4415	26.93	0.87	27.80	46.00	-18.20	AVG	
8	2.1210	36.83	0.90	37.73	56.00	-18.27	QP	
9	2.1300	26.37	0.90	27.27	46.00	-18.73	AVG	
10	3.2955	36.12	0.94	37.06	56.00	-18.94	QP	
11	3.3135	25.54	0.94	26.48	46.00	-19.52	AVG	
12	12.8670	39.62	0.99	40.61	60.00	-19.39	QP	

Conducted Emission Test Data

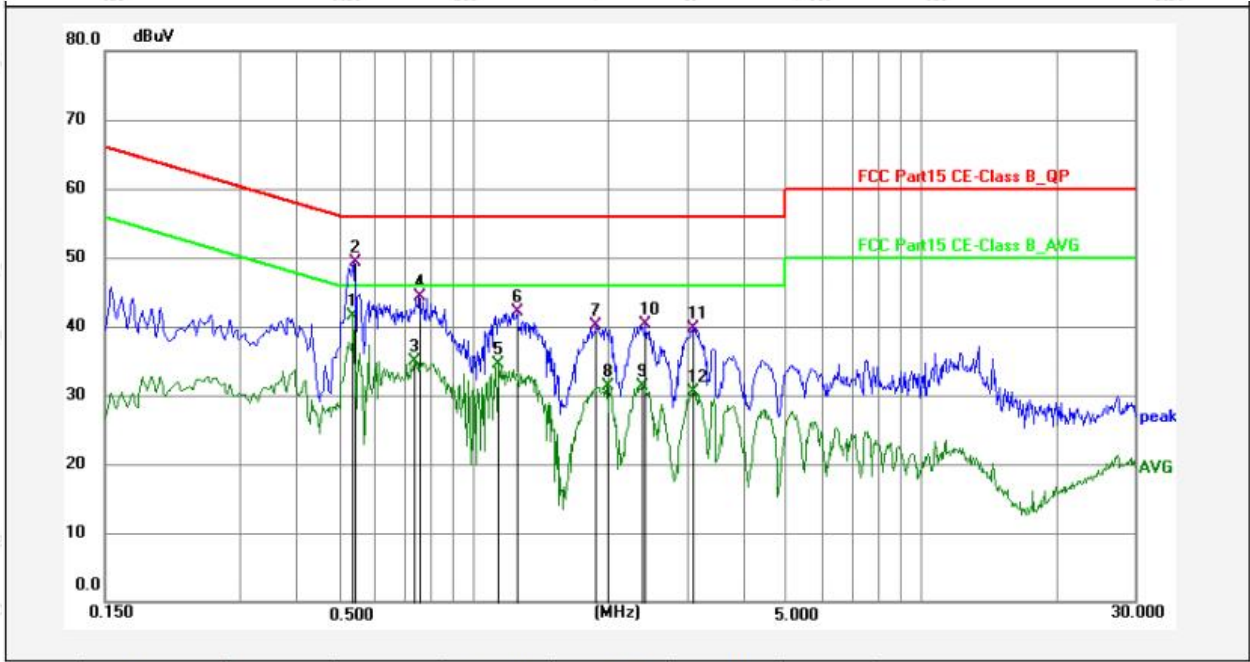
Test Site: 1# Shielded Room
 Operating Condition: 802.11n (HT20) CH01
 Test Specification: AC 240V, 60Hz for Adapter
 Comment: Live Line
 Tem.: 22.3°C Hum.: 50%



No.	Freq. (MHz)	Reading (dBuV)	Factor (dB)	Result (dBuV)	Limit (dBuV)	Over Limit (dB)	Detector	Remark
1	0.5378	48.87	0.87	49.74	56.00	-6.26	QP	
2	0.5378	40.29	0.87	41.16	46.00	-4.84	AVG	
3	0.6753	33.77	0.90	34.67	46.00	-11.33	AVG	
4	0.8002	45.13	0.92	46.05	56.00	-9.95	QP	
5	0.8131	32.74	0.92	33.66	46.00	-12.34	AVG	
6	0.9997	31.66	0.94	32.60	46.00	-13.40	AVG	
7	1.3238	43.99	0.94	44.93	56.00	-11.07	QP	
8	1.3238	31.71	0.94	32.65	46.00	-13.35	AVG	
9	1.8581	31.76	0.93	32.69	46.00	-13.31	AVG	
10	1.8779	43.33	0.93	44.26	56.00	-11.74	QP	
11	2.3460	43.83	0.94	44.77	56.00	-11.23	QP	
12	3.4356	43.19	0.94	44.13	56.00	-11.87	QP	

Conducted Emission Test Data

Test Site: 1# Shielded Room
 Operating Condition: 802.11n (HT20) CH01
 Test Specification: AC 240V, 60Hz for Adapter
 Comment: Neutral Line
 Tem.: 22.3°C Hum.: 50%



No.	Freq. (MHz)	Reading (dBuV)	Factor (dB)	Result (dBuV)	Limit (dBuV)	Over Limit (dB)	Detector	Remark
1	0.5370	40.62	0.84	41.46	46.00	-4.54	AVG	
2	0.5414	48.45	0.84	49.29	56.00	-6.71	QP	
3	0.7350	34.00	0.86	34.86	46.00	-11.14	AVG	
4	0.7575	43.44	0.86	44.30	56.00	-11.70	QP	
5	1.1400	33.66	0.85	34.51	46.00	-11.49	AVG	
6	1.2525	41.27	0.87	42.14	56.00	-13.86	QP	
7	1.8870	39.11	0.90	40.01	56.00	-15.99	QP	
8	1.9905	30.38	0.90	31.28	46.00	-14.72	AVG	
9	2.3955	30.39	0.92	31.31	46.00	-14.69	AVG	
10	2.4224	39.38	0.92	40.30	56.00	-15.70	QP	
11	3.1065	38.70	0.94	39.64	56.00	-16.36	QP	
12	3.1065	29.51	0.94	30.45	46.00	-15.55	AVG	

4. Radiation Spurious Emission and Band Edge

4.1. Test Standard and Limit

Test Standard	FCC Part15 C Section 15.209 and 15.205				
Test Limit	Frequency (MHz)	Field strength (microvolt/meter)	Limit (dBuV/m)	Remark	Measurement distance (m)
	0.009MHz~0.490MHz	2400/F(kHz)	-	-	300
	0.490MHz-1.705MHz	24000/F(kHz)	-	-	30
	1.705MHz-30MHz	30	-	-	30
	30MHz~88MHz	100	40.0	Quasi-peak	3
	88MHz~216MHz	150	43.5	Quasi-peak	3
	216MHz~960MHz	200	46.0	Quasi-peak	3
	960MHz~1000MHz	500	54.0	Quasi-peak	3
			54.0	Average	3
Above 1000MHz	-	74.0	Peak	3	

Remark:

(1)The lower limit shall apply at the transition frequency.

(2) 15.35(b), Unless otherwise specified, the limit on peak radio frequency emissions is 20dB above the maximum permitted average emission limit applicable to the equipment under test. This peak limit applies to the total peak emission level radiated by the device.

4.2. Test Setup

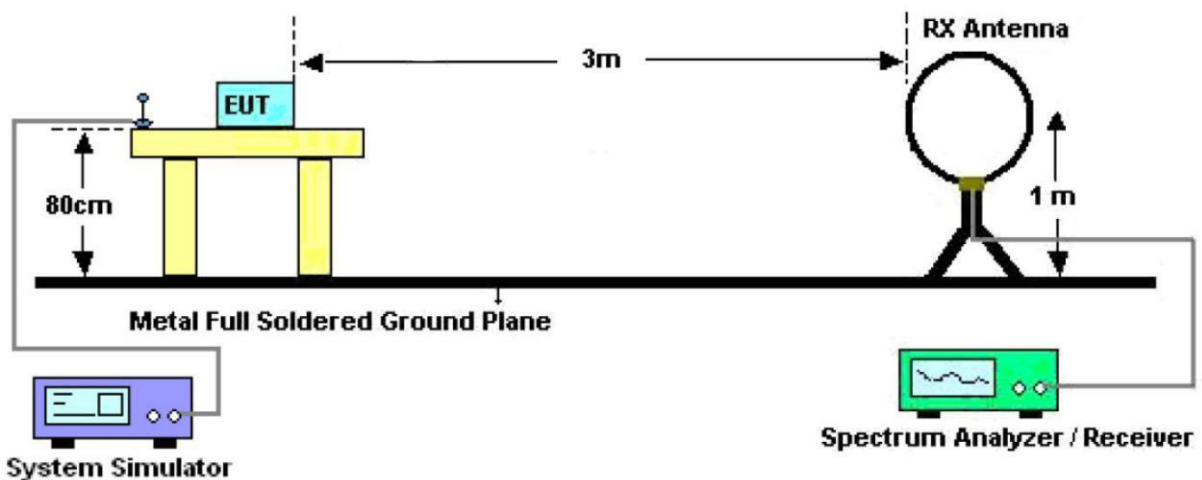


Figure 1. Below 30MHz

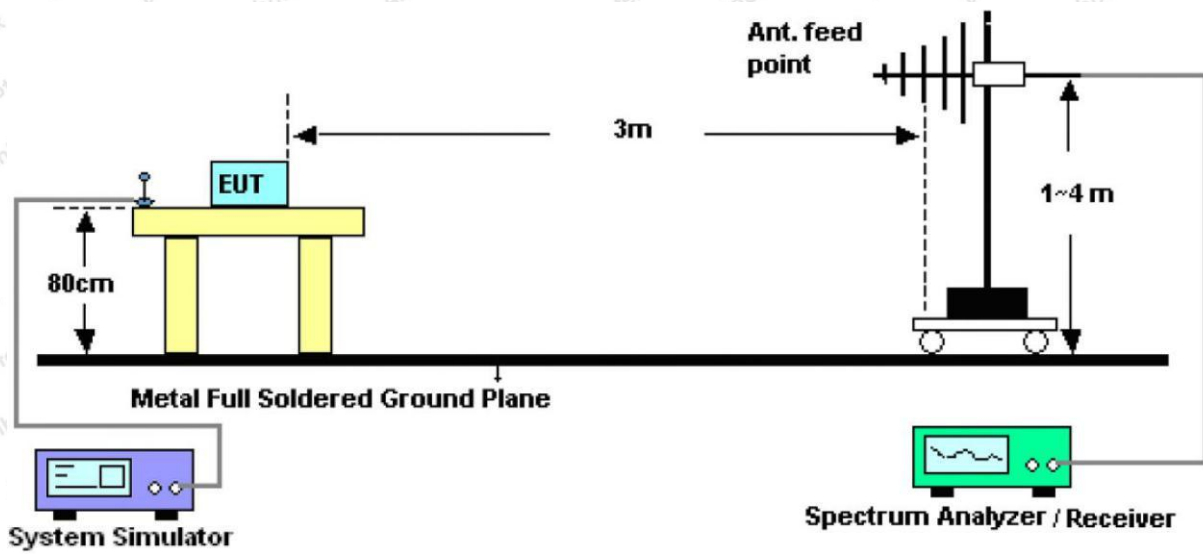


Figure 2. 30MHz to 1GHz

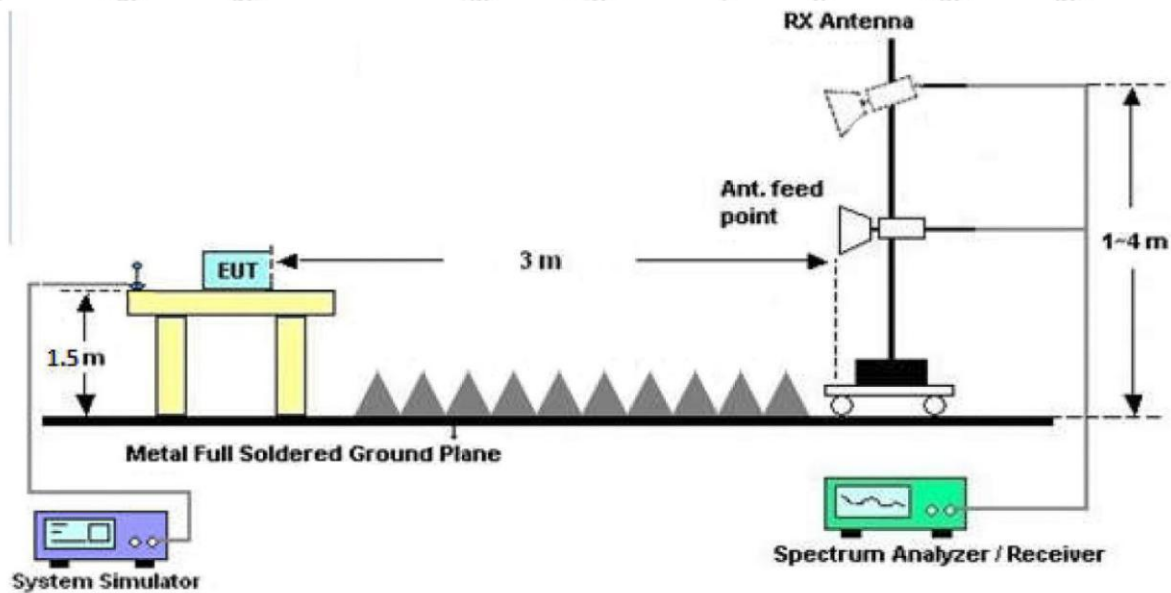


Figure 3. Above 1 GHz

4.3. Test Procedure

For below 1GHz: The EUT is placed on a turntable, which is 0.8m above the ground plane.

For above 1GHz: The EUT is placed on a turntable, which is 1.5m above the ground plane.

The turn table can rotate 360 degrees to determine the position of the maximum emission level. The EUT is set 3 meters away from the receiving antenna which is mounted on a antenna tower. The antenna can be moved up and down from 1 to 4 meters to find out the maximum emission level. Rotated the EUT through three orthogonal axes to determine the maximum emissions, both horizontal and vertical polarization of the antenna are set on test. The EUT is tested in 9*6*6 Chamber. The device is evaluated in xyz orientation.

For the radiated emission test above 1GHz:

Place the measurement antenna away from each area of the EUT determined to be a source of emissions at the specified measurement distance, while keeping the measurement antenna aimed at the source of emissions at each frequency of significant emissions, with polarization oriented for maximum response. The measurement antenna may have to be higher or lower than the EUT, depending on the radiation pattern of the emission and staying aimed at the emission source for receiving the maximum signal. The final measurement antenna elevation shall be that which maximizes the emissions. The measurement antenna elevation for maximum emissions shall be restricted to a range of heights of from 1 m to 4 m above the ground or reference ground plane.

For 9kHz to 150kHz, Set the spectrum analyzer as:

RBW = 200Hz, VBW = 1kHz, Detector= Quasi-Peak, Trace mode= Max hold, Sweep- auto couple.

For 150kHz to 30MHz, Set the spectrum analyzer as:

RBW = 9kHz, VBW = 30kHz, Detector= Quasi-Peak, Trace mode= Max hold, Sweep- auto couple.

For 30MHz to 1000MHz, Set the spectrum analyzer as:

RBW = 100kHz, VBW = 300kHz, Detector= Quasi-Peak, Trace mode= Max hold, Sweep- auto couple.

For above 1GHz, Set the spectrum analyzer as:

RBW = 1MHz, VBW = 1MHz, Detector= Peak, Trace mode= Max hold, Sweep- auto couple.

For average measurement:

-VBW=10Hz, When duty cycle is no less than 98 percent

-VBW $\geq 1/T$, when duty cycle is less than 98 percent where T is the minimum transmission duration over which the transmitter is on and is transmitting at its maximum power control level for the tested mode of operation, so refer to this clause 5.4 duty cycle.

4.4. Test Data

PASS

During the test, Pre-scan all kind of the place mode (X-axis, Y-axis, Z-axis), and found the X-axis is the worst case.

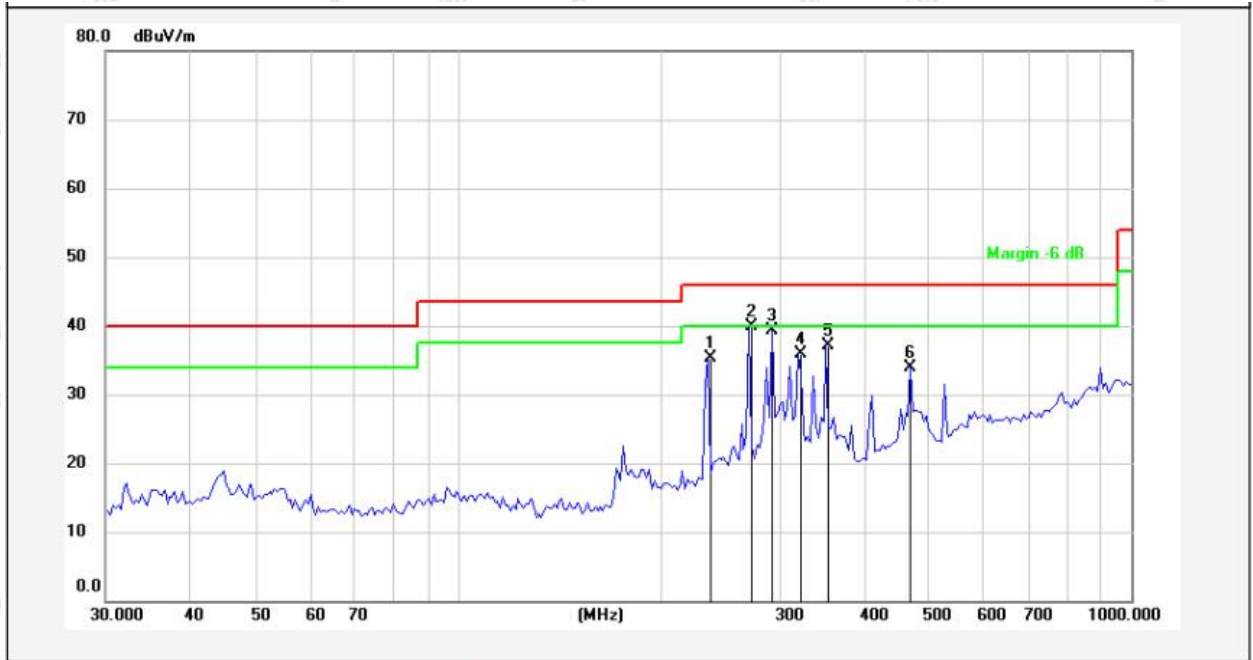
The test results of 9kHz-30MHz was attenuated more than 20dB below the permissible limits, so the results don't record in the report.

During the test, pre-scan all modes, only the worst case is recorded in the report.



Test Results (30~1000MHz)

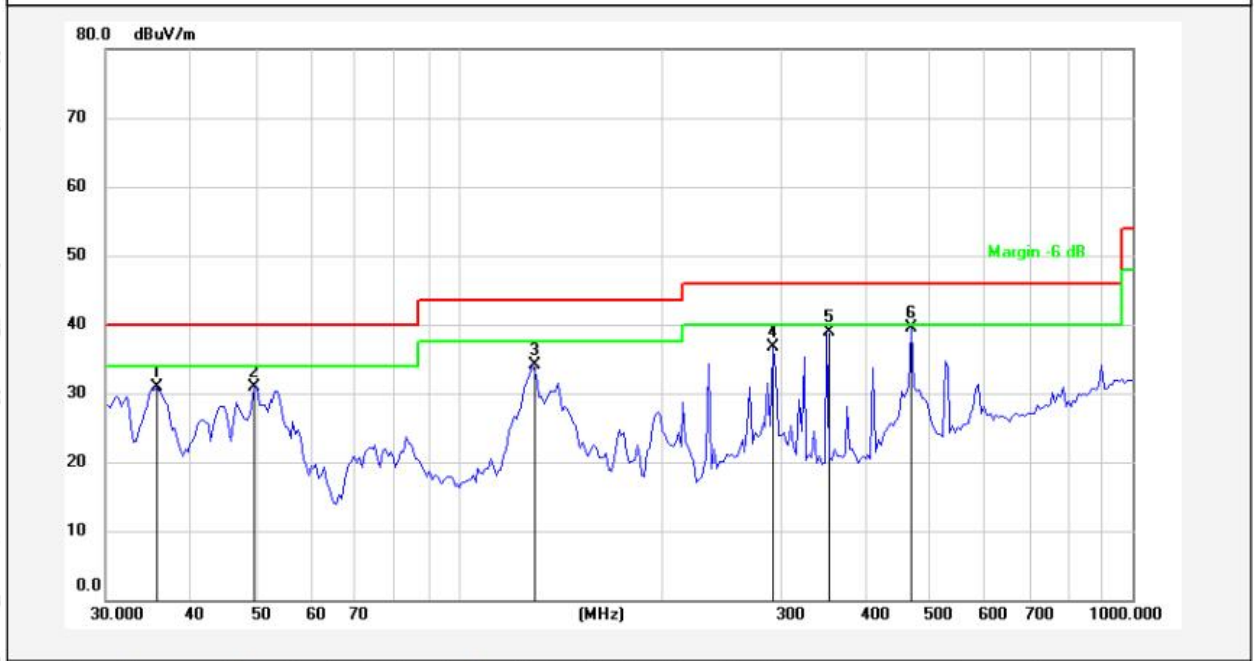
Test Mode: 802.11b CH01
 Temp.(°C)/Hum.(%RH): 22°C/50%RH
 Polarization: Horizontal
 Power Source: AC 120V, 60Hz for Adapter



No.	Freq. (MHz)	Reading (dBuV)	Factor (dB/m)	Result (dBuV/m)	Limit (dBuV/m)	Over Limit (dB)	Detector	Height (cm)	degree (deg)	Remark
1	235.4033	48.34	-12.94	35.40	46.00	-10.60	QP			
2	270.8493	51.92	-12.04	39.88	46.00	-6.12	QP			
3	293.0842	51.34	-12.06	39.28	46.00	-6.72	QP			
4	319.9370	47.05	-11.14	35.91	46.00	-10.09	QP			
5	352.3251	47.81	-10.65	37.16	46.00	-8.84	QP			
6	470.5232	42.01	-8.14	33.87	46.00	-12.13	QP			

Test Results (30~1000MHz)

Test Mode: 802.11b CH01
 Temp.(°C)/Hum.(%RH): 22°C/50%RH
 Polarization: Vertical
 Power Source: AC 120V, 60Hz for Adapter



No.	Freq. (MHz)	Reading (dBuV)	Factor (dB/m)	Result (dBuV/m)	Limit (dBuV/m)	Over Limit (dB)	Detector	Height (cm)	degree (deg)	Remark
1	35.7490	46.95	-16.06	30.89	40.00	-9.11	QP			
2	49.8814	46.32	-15.32	31.00	40.00	-9.00	QP			
3	128.5630	51.70	-17.67	34.03	43.50	-9.47	QP			
4	293.0842	48.71	-12.06	36.65	46.00	-9.35	QP			
5	352.3251	49.61	-10.65	38.96	46.00	-7.04	QP			
6	470.5230	47.69	-8.14	39.55	46.00	-6.45	QP			

Test Results (Above 1000MHz)

Test Mode: 802.11b Mode				Test channel: Lowest		
Peak value:						
Frequency (MHz)	Reading (dBuV)	Factor (dB/m)	Result (dBuV/m)	Limit Line (dBuV/m)	Over Limit (dB)	polarization
4824.00	27.54	15.31	42.85	74.00	-31.15	Vertical
7236.00	29.22	18.06	47.28	74.00	-26.72	Vertical
9648.00	28.86	23.77	52.63	74.00	-21.37	Vertical
12060.00	*			74.00		Vertical
14472.00	*			74.00		Vertical
4824.00	27.04	15.31	42.35	74.00	-31.65	Horizontal
7236.00	29.15	18.06	47.21	74.00	-26.79	Horizontal
9648.00	27.80	23.77	51.57	74.00	-22.43	Horizontal
12060.00	*			74.00		Horizontal
14472.00	*			74.00		Horizontal
Average value:						
Frequency (MHz)	Reading (dBuV)	Factor (dB/m)	Result (dBuV/m)	Limit Line (dBuV/m)	Over Limit (dB)	polarization
4824.00	19.56	15.31	34.87	54.00	-19.13	Vertical
7236.00	21.00	18.06	39.06	54.00	-14.94	Vertical
9648.00	20.76	23.77	44.53	54.00	-9.47	Vertical
12060.00	*			54.00		Vertical
14472.00	*			54.00		Vertical
4824.00	19.55	15.31	34.86	54.00	-19.14	Horizontal
7236.00	21.72	18.06	39.78	54.00	-14.22	Horizontal
9648.00	19.54	23.77	43.31	54.00	-10.69	Horizontal
12060.00	*			54.00		Horizontal
14472.00	*			54.00		Horizontal

Test Results (Above 1000MHz)

Test Mode: 802.11b Mode				Test channel: Middle		
Peak value:						
Frequency (MHz)	Reading (dBuV)	Factor (dB/m)	Result (dBuV/m)	Limit Line (dBuV/m)	Over Limit (dB)	polarization
4874.00	27.49	15.41	42.90	74.00	-31.10	Vertical
7311.00	27.57	18.01	45.58	74.00	-28.42	Vertical
9748.00	28.80	23.79	52.59	74.00	-21.41	Vertical
12185.00	*			74.00		Vertical
14622.00	*			74.00		Vertical
4874.00	26.84	15.41	42.25	74.00	-31.75	Horizontal
7311.00	28.07	18.01	46.08	74.00	-27.92	Horizontal
9748.00	28.10	23.79	51.89	74.00	-22.11	Horizontal
12185.00	*			74.00		Horizontal
14622.00	*			74.00		Horizontal
Average value:						
Frequency (MHz)	Reading (dBuV)	Factor (dB/m)	Result (dBuV/m)	Limit Line (dBuV/m)	Over Limit (dB)	polarization
4874.00	18.31	15.41	33.72	54.00	-20.28	Vertical
7311.00	18.47	18.01	36.48	54.00	-17.52	Vertical
9748.00	19.05	23.79	42.84	54.00	-11.16	Vertical
12185.00	*			54.00		Vertical
14622.00	*			54.00		Vertical
4874.00	17.94	15.41	33.35	54.00	-20.65	Horizontal
7311.00	18.15	18.01	36.16	54.00	-17.84	Horizontal
9748.00	18.81	23.79	42.60	54.00	-11.40	Horizontal
12185.00	*			54.00		Horizontal
14622.00	*			54.00		Horizontal

Test Results (Above 1000MHz)

Test Mode: 802.11b Mode				Test channel: Highest		
Peak value:						
Frequency (MHz)	Reading (dBuV)	Factor (dB/m)	Result (dBuV/m)	Limit Line (dBuV/m)	Over Limit (dB)	polarization
4924.00	27.35	15.51	42.86	74.00	-31.14	Vertical
7386.00	27.51	17.97	45.48	74.00	-28.52	Vertical
9848.00	28.24	23.82	52.06	74.00	-21.94	Vertical
12310.00	*			74.00		Vertical
14772.00	*			74.00		Vertical
4924.00	27.50	15.51	43.01	74.00	-30.99	Horizontal
7386.00	28.42	17.97	46.39	74.00	-27.61	Horizontal
9848.00	28.60	23.82	52.42	74.00	-21.58	Horizontal
12310.00	*			74.00		Horizontal
14772.00	*			74.00		Horizontal
Average value:						
Frequency (MHz)	Reading (dBuV)	Factor (dB/m)	Result (dBuV/m)	Limit Line (dBuV/m)	Over Limit (dB)	polarization
4924.00	18.14	15.51	33.65	54.00	-20.35	Vertical
7386.00	17.91	17.97	35.88	54.00	-18.12	Vertical
9848.00	19.49	23.82	43.31	54.00	-10.69	Vertical
12310.00	*			54.00		Vertical
14772.00	*			54.00		Vertical
4924.00	17.75	15.51	33.26	54.00	-20.74	Horizontal
7386.00	18.53	17.97	36.50	54.00	-17.50	Horizontal
9848.00	19.04	23.82	42.86	54.00	-11.14	Horizontal
12310.00	*			54.00		Horizontal
14772.00	*			54.00		Horizontal

Remark:

1. During the test, pre-scan the 802.11b,g,n(HT20),n(HT40) mode, and found the 802.11b mode is worse case , the report only record this mode.
2. Result=Reading + Factor
3. “*”, means this data is the too weak instrument of signal is unable to test.

Radiated Band Edge:

Test Mode: 802.11b Mode				Test channel: Lowest		
Peak value:						
Frequency (MHz)	Reading (dBuV)	Factor (dB/m)	Result (dBuV/m)	Limit Line (dBuV/m)	Over Limit (dB)	Polarization
2310.00	38.03	9.58	47.61	74.00	-26.39	Horizontal
2390.00	40.53	9.73	50.26	74.00	-23.74	Horizontal
2310.00	39.29	9.58	48.87	74.00	-25.13	Vertical
2390.00	46.11	9.73	55.84	74.00	-18.16	Vertical
Average value:						
Frequency (MHz)	Reading (dBuV)	Factor (dB/m)	Result (dBuV/m)	Limit Line (dBuV/m)	Over Limit (dB)	Polarization
2310.00	28.65	9.58	38.23	54.00	-15.77	Horizontal
2390.00	35.84	9.73	45.57	54.00	-8.43	Horizontal
2310.00	30.02	9.58	39.60	54.00	-14.40	Vertical
2390.00	38.17	9.73	47.90	54.00	-6.10	Vertical

Test Mode: 802.11b Mode				Test channel: Highest		
Peak value:						
Frequency (MHz)	Reading (dBuV)	Factor (dB/m)	Result (dBuV/m)	Limit Line (dBuV/m)	Over Limit (dB)	Polarization
2483.50	46.22	9.91	56.13	74.00	-17.87	Horizontal
2500.00	40.14	9.94	50.08	74.00	-23.92	Horizontal
2483.50	46.58	9.91	56.49	74.00	-17.51	Vertical
2500.00	39.78	9.94	49.72	74.00	-24.29	Vertical
Average value:						
Frequency (MHz)	Reading (dBuV)	Factor (dB/m)	Result (dBuV/m)	Limit Line (dBuV/m)	Over Limit (dB)	Polarization
2483.50	37.37	9.91	47.28	54.00	-6.72	Horizontal
2500.00	29.16	9.94	39.10	54.00	-14.90	Horizontal
2483.50	38.89	9.91	48.80	54.00	-5.20	Vertical
2500.00	29.62	9.94	39.56	54.00	-14.44	Vertical

Remark: 1. Result=Reading + Factor

Radiated Band Edge:

Test Mode: 802.11g Mode				Test channel: Lowest		
Peak value:						
Frequency (MHz)	Reading (dBuV)	Factor (dB/m)	Result (dBuV/m)	Limit Line (dBuV/m)	Over Limit (dB)	Polarization
2310.00	36.83	9.58	46.41	74.00	-27.59	Horizontal
2390.00	40.46	9.73	50.19	74.00	-23.81	Horizontal
2310.00	38.77	9.58	48.35	74.00	-25.65	Vertical
2390.00	42.41	9.73	52.14	74.00	-21.86	Vertical
Average value:						
Frequency (MHz)	Reading (dBuV)	Factor (dB/m)	Result (dBuV/m)	Limit Line (dBuV/m)	Over Limit (dB)	Polarization
2310.00	29.06	9.58	38.64	54.00	-15.36	Horizontal
2390.00	35.29	9.73	45.02	54.00	-8.98	Horizontal
2310.00	30.03	9.58	39.61	54.00	-14.40	Vertical
2390.00	35.82	9.73	45.55	54.00	-8.45	Vertical

Test Mode: 802.11g Mode				Test channel: Highest		
Peak value:						
Frequency (MHz)	Reading (dBuV)	Factor (dB/m)	Result (dBuV/m)	Limit Line (dBuV/m)	Over Limit (dB)	Polarization
2483.50	46.22	9.91	56.13	74.00	-17.87	Horizontal
2500.00	40.07	9.94	50.01	74.00	-23.99	Horizontal
2483.50	46.33	9.91	56.24	74.00	-17.76	Vertical
2500.00	39.69	9.94	49.63	74.00	-24.37	Vertical
Average value:						
Frequency (MHz)	Reading (dBuV)	Factor (dB/m)	Result (dBuV/m)	Limit Line (dBuV/m)	Over Limit (dB)	Polarization
2483.50	35.54	9.91	45.45	54.00	-8.55	Horizontal
2500.00	28.26	9.94	38.20	54.00	-15.80	Horizontal
2483.50	37.84	9.91	47.75	54.00	-6.25	Vertical
2500.00	29.15	9.94	39.09	54.00	-14.91	Vertical

Remark: 1. Result=Reading + Factor

Radiated Band Edge:

Test Mode: 802.11n (HT20) Mode				Test channel: Lowest		
Peak value:						
Frequency (MHz)	Reading (dBuV)	Factor (dB/m)	Result (dBuV/m)	Limit Line (dBuV/m)	Over Limit (dB)	Polarization
2310.00	34.83	9.58	44.41	74.00	-29.59	Horizontal
2390.00	38.46	9.73	48.19	74.00	-25.81	Horizontal
2310.00	37.77	9.58	47.35	74.00	-26.65	Vertical
2390.00	40.41	9.73	50.14	74.00	-23.86	Vertical
Average value:						
Frequency (MHz)	Reading (dBuV)	Factor (dB/m)	Result (dBuV/m)	Limit Line (dBuV/m)	Over Limit (dB)	Polarization
2310.00	27.74	9.58	37.32	54.00	-16.68	Horizontal
2390.00	33.07	9.73	42.80	54.00	-11.20	Horizontal
2310.00	27.64	9.58	37.22	54.00	-16.79	Vertical
2390.00	33.82	9.73	43.55	54.00	-10.45	Vertical

Test Mode: 802.11n (HT20) Mode				Test channel: Highest		
Peak value:						
Frequency (MHz)	Reading (dBuV)	Factor (dB/m)	Result (dBuV/m)	Limit Line (dBuV/m)	Over Limit (dB)	Polarization
2483.50	43.99	9.91	53.90	74.00	-20.10	Horizontal
2500.00	38.14	9.94	48.08	74.00	-25.92	Horizontal
2483.50	45.58	9.91	55.49	74.00	-18.51	Vertical
2500.00	39.78	9.94	49.72	74.00	-24.29	Vertical
Average value:						
Frequency (MHz)	Reading (dBuV)	Factor (dB/m)	Result (dBuV/m)	Limit Line (dBuV/m)	Over Limit (dB)	Polarization
2483.50	33.52	9.91	43.43	54.00	-10.57	Horizontal
2500.00	28.41	9.94	38.35	54.00	-15.65	Horizontal
2483.50	34.66	9.91	44.57	54.00	-9.43	Vertical
2500.00	29.29	9.94	39.23	54.00	-14.77	Vertical

Remark: 1. Result=Reading + Factor

Radiated Band Edge:

Test Mode: 802.11n (HT40) Mode				Test channel: Lowest		
Peak value:						
Frequency (MHz)	Reading (dBuV)	Factor (dB/m)	Result (dBuV/m)	Limit Line (dBuV/m)	Over Limit (dB)	Polarization
2310.00	37.30	9.58	46.88	74.00	-27.12	Horizontal
2390.00	41.46	9.73	51.19	74.00	-22.81	Horizontal
2310.00	39.77	9.58	49.35	74.00	-24.65	Vertical
2390.00	42.62	9.73	52.35	74.00	-21.65	Vertical
Average value:						
Frequency (MHz)	Reading (dBuV)	Factor (dB/m)	Result (dBuV/m)	Limit Line (dBuV/m)	Over Limit (dB)	Polarization
2310.00	28.66	9.58	38.24	54.00	-15.76	Horizontal
2390.00	34.15	9.73	43.88	54.00	-10.12	Horizontal
2310.00	28.84	9.58	38.42	54.00	-15.59	Vertical
2390.00	33.22	9.73	42.95	54.00	-11.05	Vertical

Test Mode: 802.11n (HT40) Mode				Test channel: Highest		
Peak value:						
Frequency (MHz)	Reading (dBuV)	Factor (dB/m)	Result (dBuV/m)	Limit Line (dBuV/m)	Over Limit (dB)	Polarization
2483.50	43.90	9.91	53.81	74.00	-20.19	Horizontal
2500.00	38.82	9.94	48.76	74.00	-25.24	Horizontal
2483.50	45.71	9.91	55.62	74.00	-18.38	Vertical
2500.00	40.28	9.94	50.22	74.00	-23.79	Vertical
Average value:						
Frequency (MHz)	Reading (dBuV)	Factor (dB/m)	Result (dBuV/m)	Limit Line (dBuV/m)	Over Limit (dB)	Polarization
2483.50	33.22	9.91	43.13	54.00	-10.87	Horizontal
2500.00	30.41	9.94	40.35	54.00	-13.65	Horizontal
2483.50	34.66	9.91	44.57	54.00	-9.43	Vertical
2500.00	30.29	9.94	40.23	54.00	-13.77	Vertical

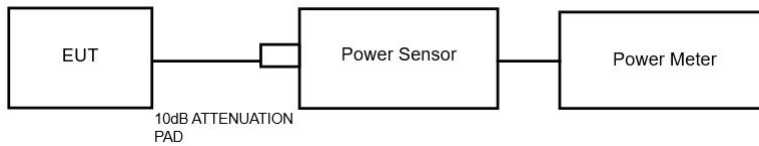
Remark: 1. Result=Reading + Factor

5. Maximum Output Power Test

5.1. Test Standard and Limit

Test Standard	FCC Part15 C Section 15.247 (b)(3)
Test Limit	30dBm

5.2. Test Setup



5.3. Test Procedure

1. The Transmitter output (antenna port) was connected to the power meter.
2. Turn on the EUT and power meter and then record the power value.
3. Repeat above procedures on all channels needed to be tested.

Note: The cable loss and attenuator loss were offset into measure device as amplitude offset.

5.4. Test Data

Pass

Please refer to clause 5 of the Appendix Test Data.

Additional test for duty cycle.

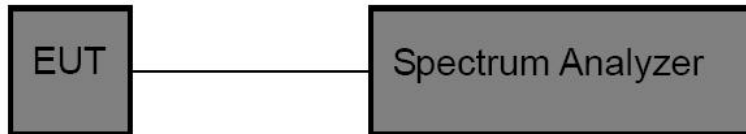
Please refer to clause 4 of the Appendix Test Data.

6. 6DB Occupy Bandwidth Test

6.1. Test Standard and Limit

Test Standard	FCC Part15 C Section 15.247 (a)(2)
Test Limit	>500kHz

6.2. Test Setup



6.3. Test Procedure

1. Place the EUT on the table and set it in the transmitting mode.
2. Remove the antenna from the EUT and then connect a low loss RF cable from the antenna port to the spectrum analyzer.
3. Set the spectrum analyzer as:
RBW= 100kHz, VBW \geq 3*RBW =300kHz
Detector= Peak
Trace mode= Max hold.
Sweep- auto couple.
4. Mark the peak frequency and -6dB (upper and lower) frequency.
5. Repeat until all the rest channels are investigated.

6.4. Test Data

Pass

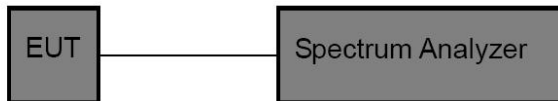
Please refer to clause 1 of the Appendix Test Data.

7. Power Spectral Density Test

7.1. Test Standard and Limit

Test Standard	FCC Part15 C Section
Test Limit	8dBm/3KHz

7.2. Test Setup



7.3. Test Procedure

1. Place the EUT on the table and set it in transmitting mode. Remove the antenna from the EUT and then connect a low loss RF cable from the antenna port to the spectrum analyzer.
2. Set the spectrum analyzer as RBW = 3kHz, VBW = 10kHz, Span = 1.5xDTS BW
3. Record the max. reading.
4. Repeat the above procedure until the measurements for all frequencies are completed.

7.4. Test Data

Pass

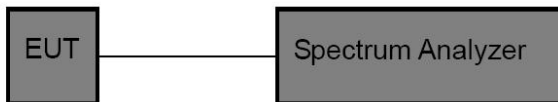
Please refer to clause 6 of the Appendix Test Data.

8. 100kHz Bandwidth of Frequency Band Edge Requirement

8.1. Test Standard and Limit

Test Standard	FCC Part15 C Section 15.247 (d)
Test Limit	in any 100 kHz bandwidth outside the frequency bands in which the spread spectrum intentional radiator in operating, the radio frequency power that is produced by the intentional radiator shall be at least 20dB below that in the 100kHz bandwidth within the band that contains the highest level of the desired power, In addition, radiated emissions which fall in the restricted bands, as defined in §15.205(a), must also comply with the radiated emission limits specified in15.209(a).

8.2. Test Setup



8.3. Test Procedure

Using the following spectrum analyzer setting:

1. Set the RBW = 100KHz.
2. Set the VBW = 300KHz.
3. Sweep time = auto couple.
4. Detector function = peak.
5. Trace mode = max hold.
6. Allow trace to fully stabilize.

8.4. Test Data

Pass

Please refer to clause 3 & clause 7 of the Appendix Test Data.

9. Antenna Requirement

9.1. Test Standard and Requirement

Test Standard	FCC Part15 Section 15.203 /247(c)
Requirement	<p>1) 15.203 requirement: An intentional radiator shall be designed to ensure that no antenna other than that furnished by the responsible party shall be used with the device. The use of a permanently attached antenna or of an antenna that uses a unique coupling to the intentional radiator, the manufacturer may design the unit so that a broken antenna can be replaced by the user, but the use of a standard antenna jack or electrical connector is prohibited.</p> <p>2) 15.247(c) (1)(i) requirement: Systems operating in the 2400-2483.5 MHz band that is used exclusively for fixed. Point-to-point operations may employ transmitting antennas with directional gain greater than 6dBi provided the maximum conducted output power of the intentional radiator is reduced by 1 dB for every 3 dB that the directional gain of the antenna exceeds 6 dBi.</p>

9.2. Antenna Connected Construction

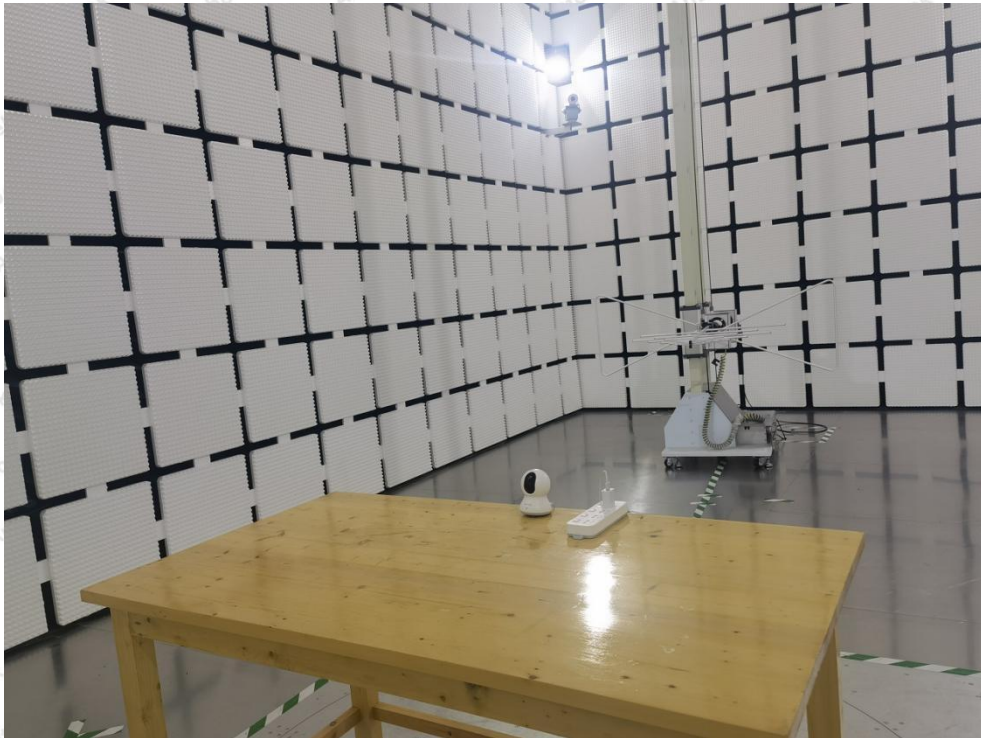
The antenna is a FPC antenna which permanently attached, and the best case gain of the antenna is 2 dBi It complies with the standard requirement.

APPENDIX I -- TEST SETUP PHOTOGRAPH

Photo of Power Line Conducted Emission Test



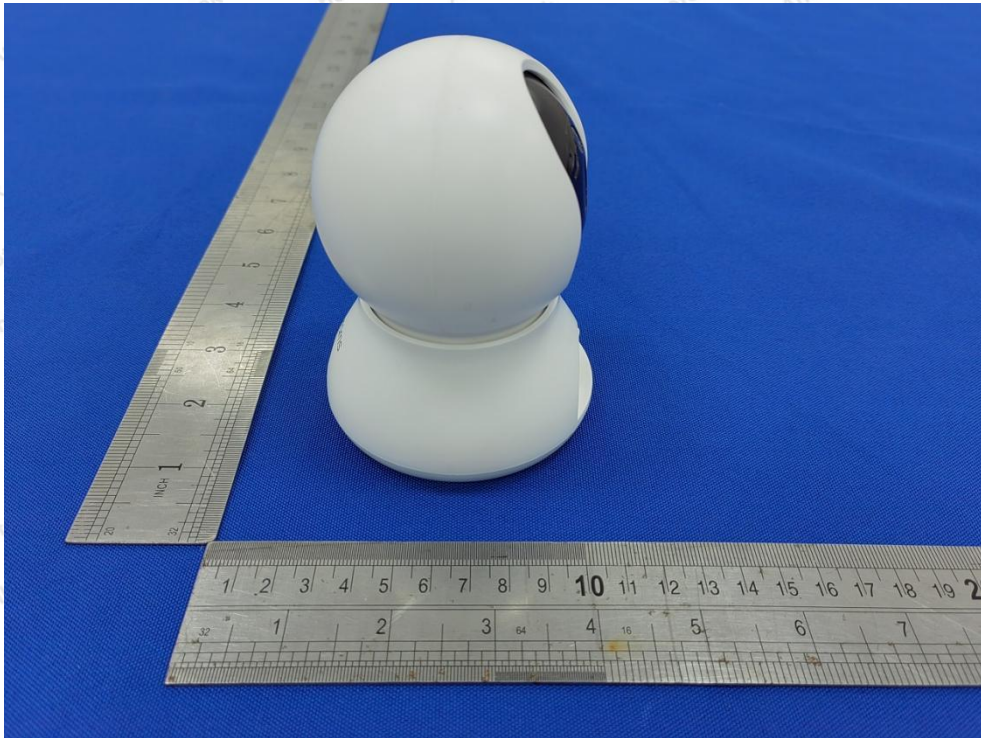
Photo of Radiation Emission Test

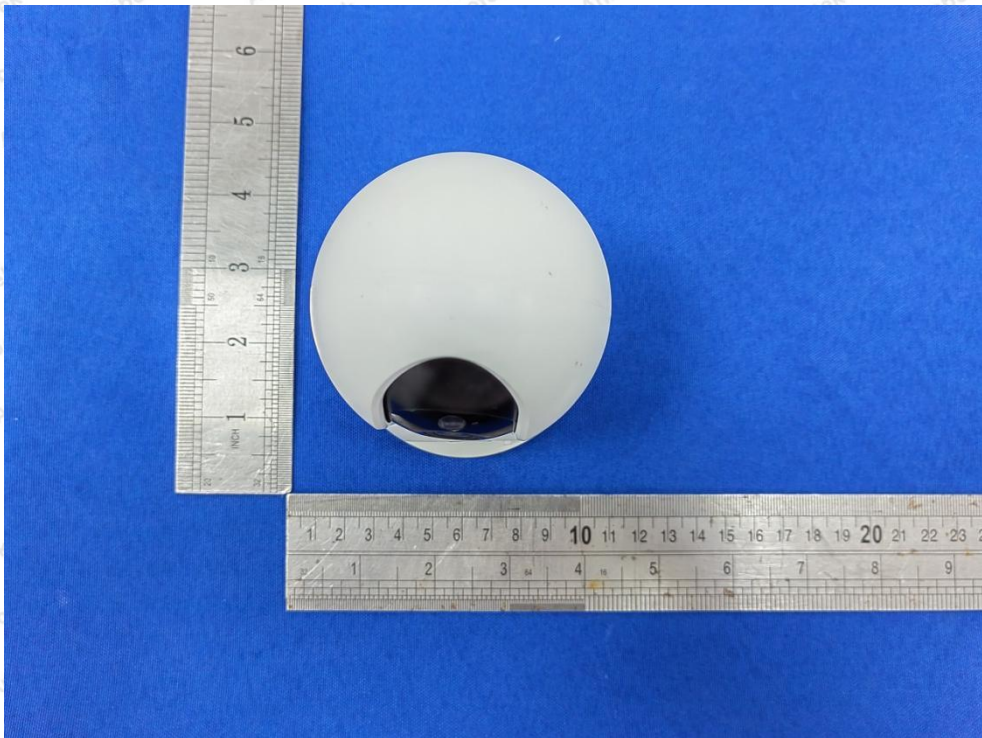




APPENDIX II -- EXTERNAL PHOTOGRAPH

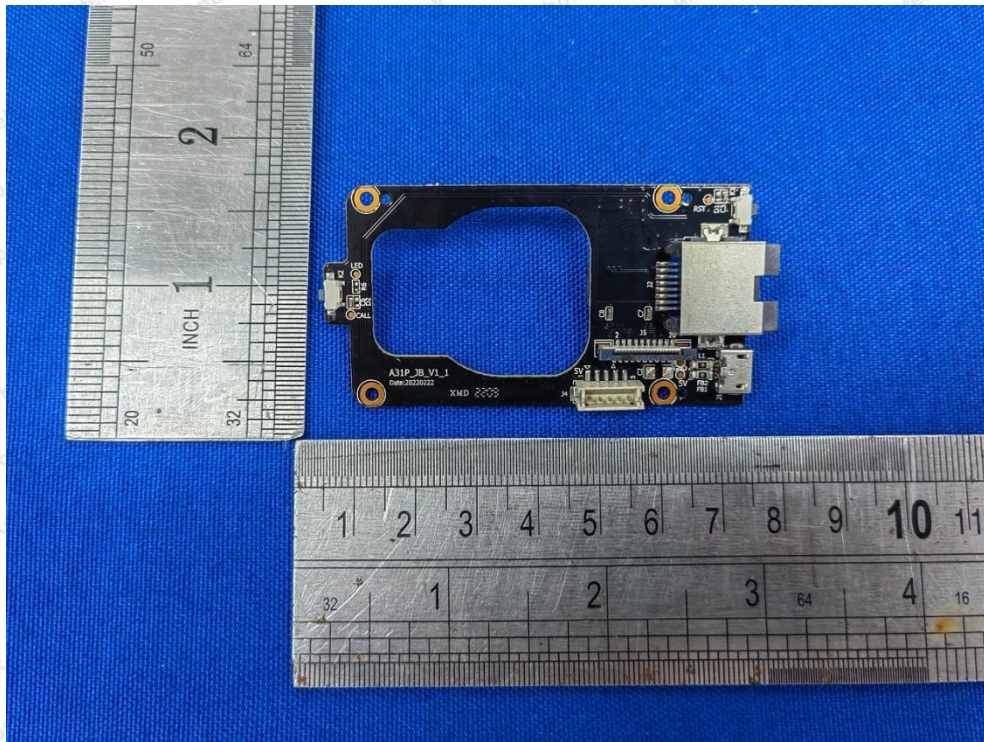
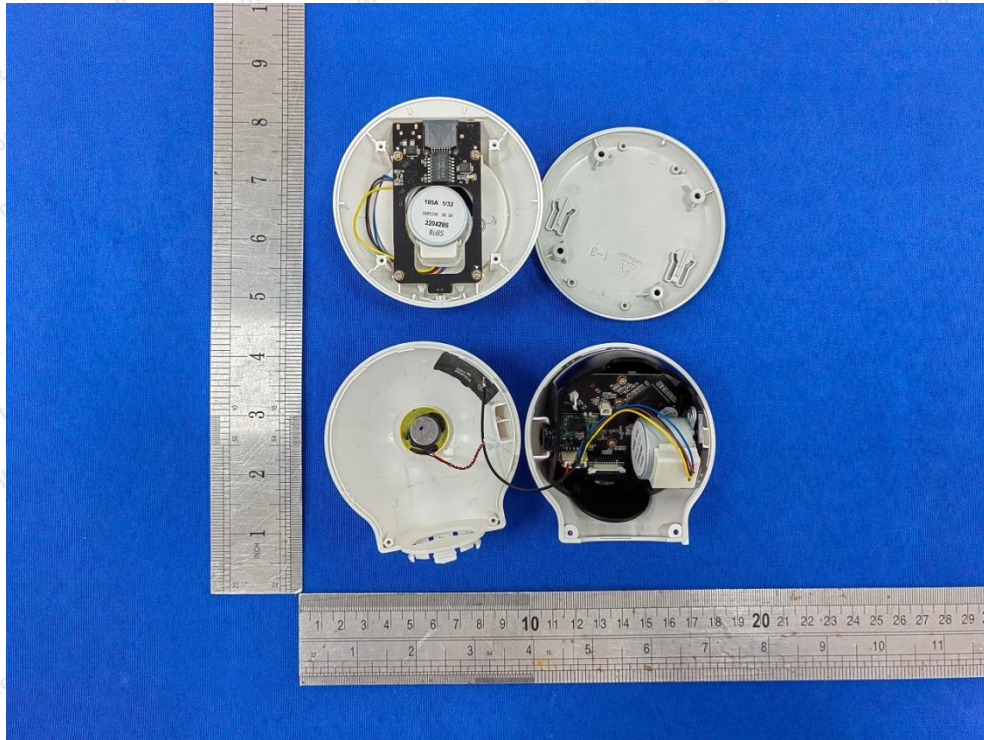


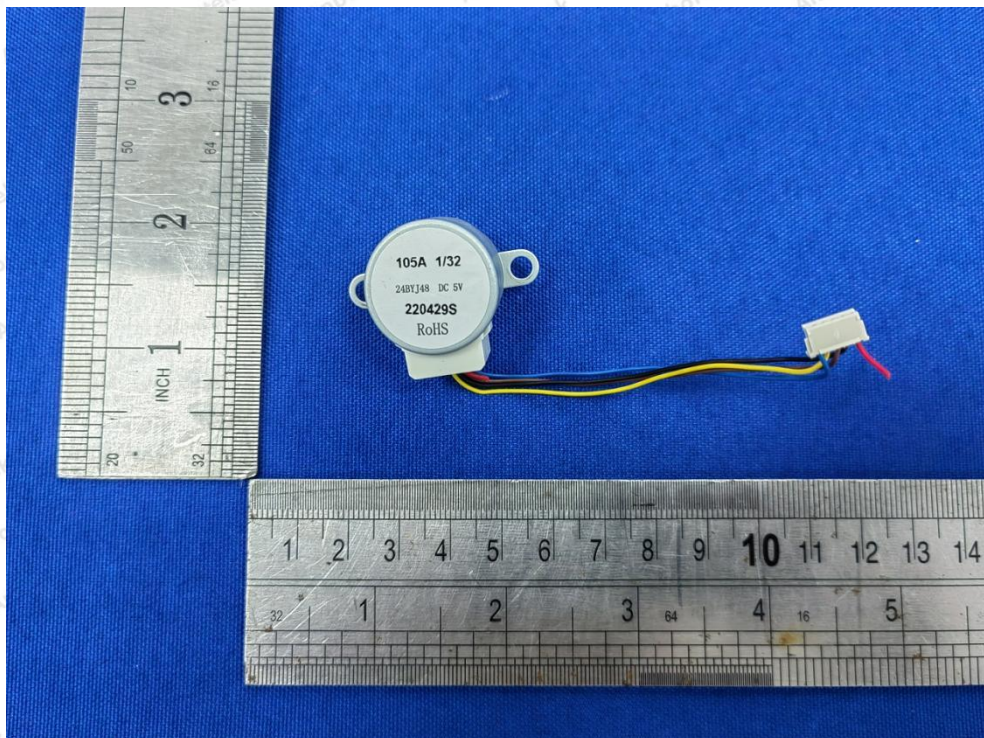
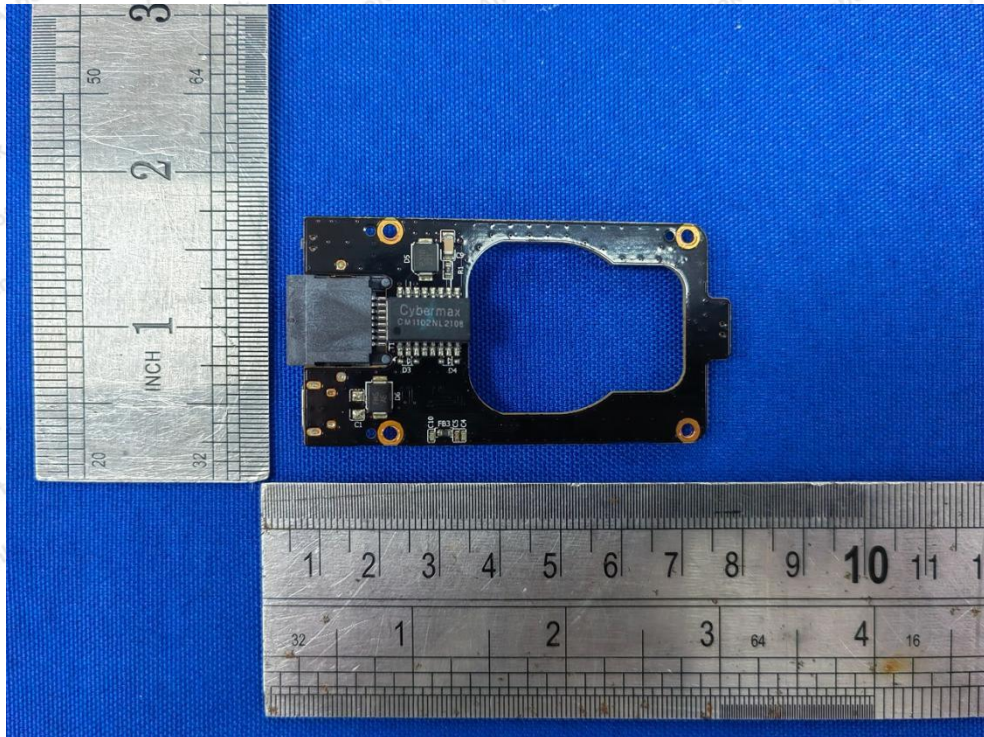


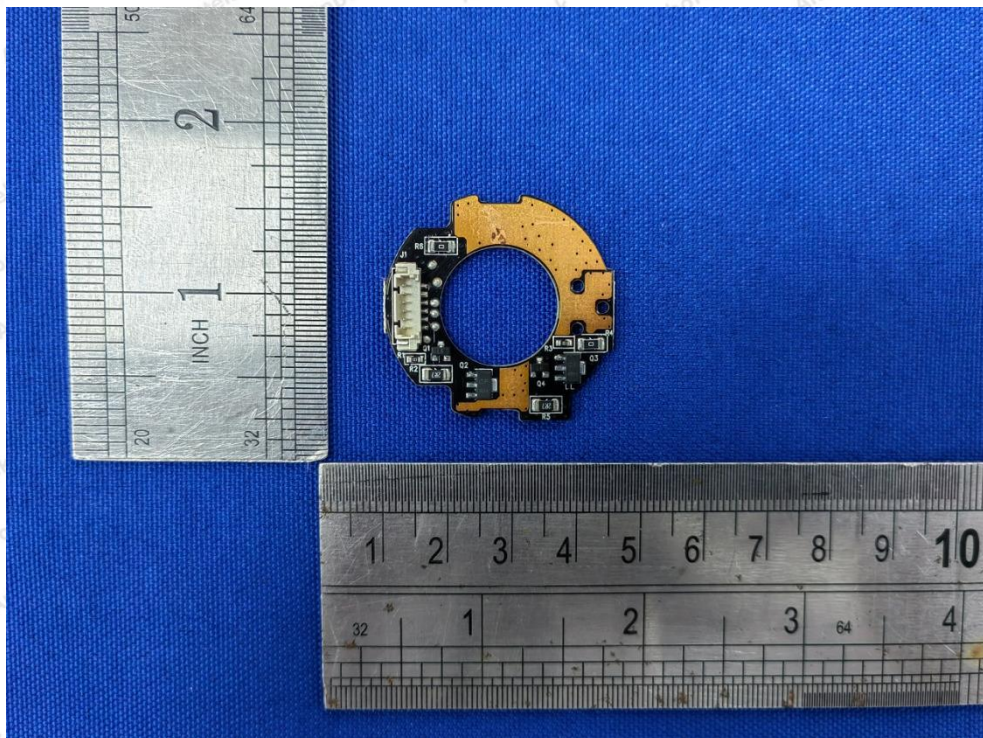
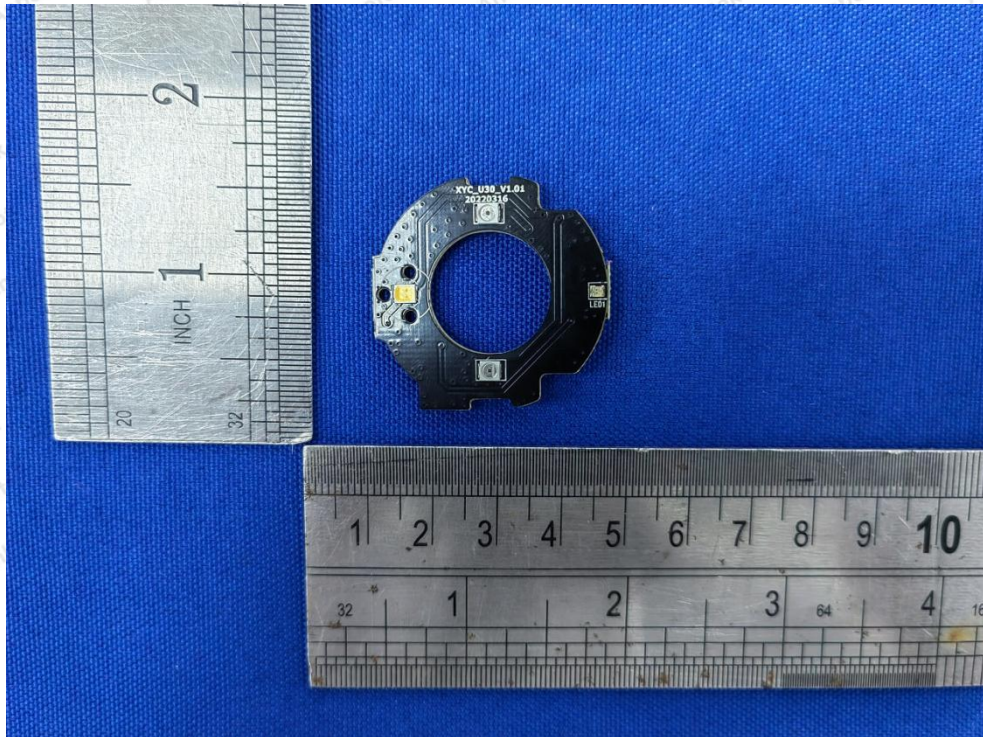


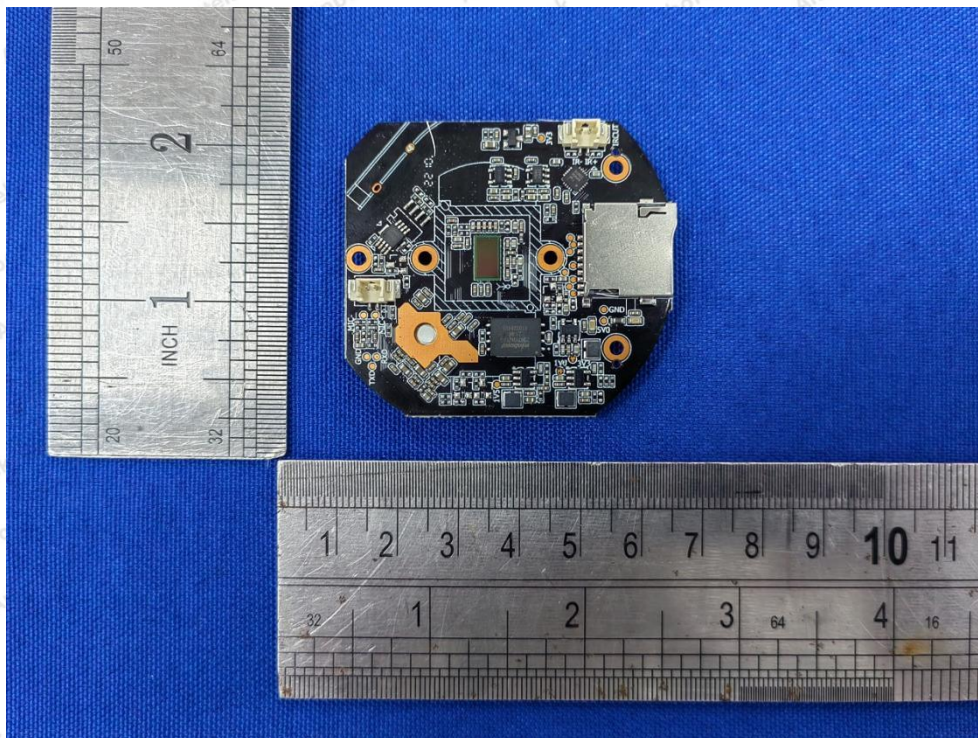
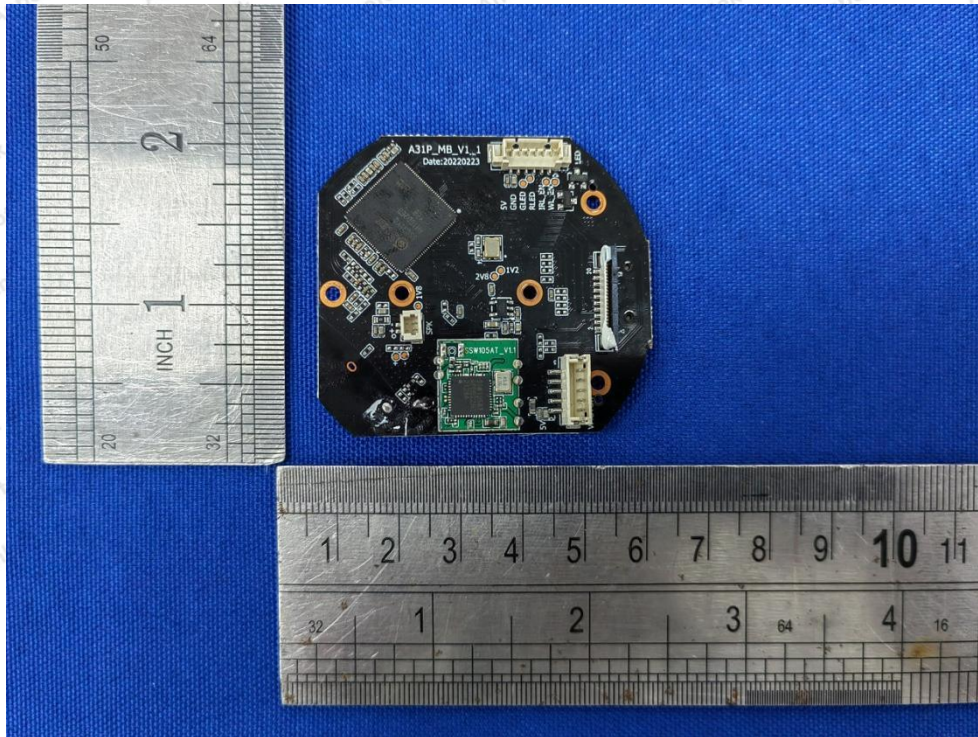


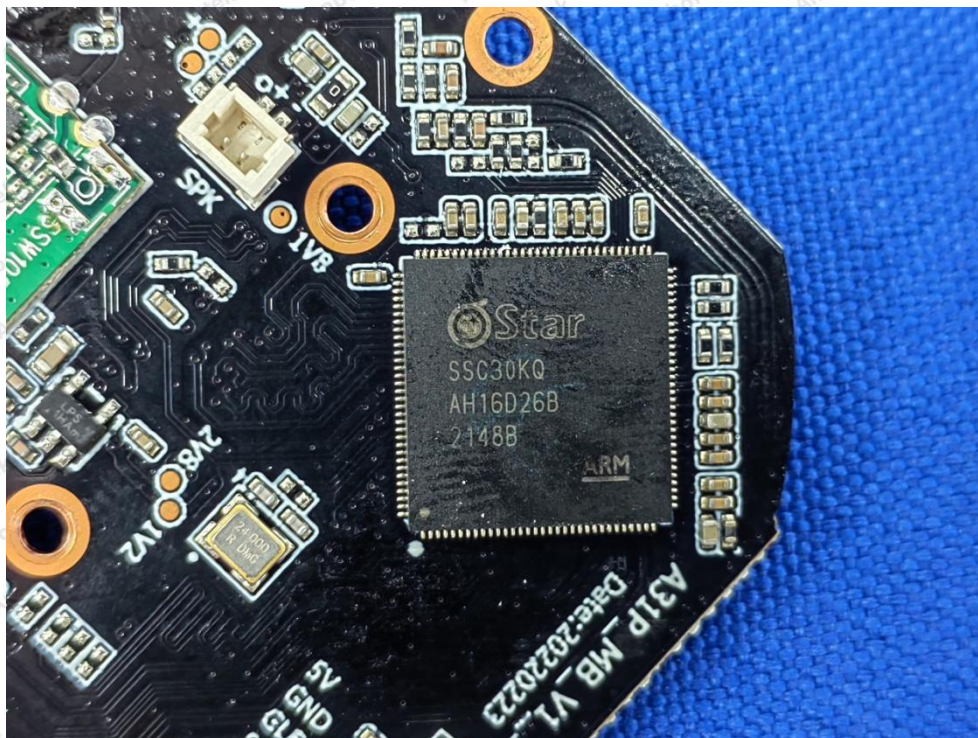
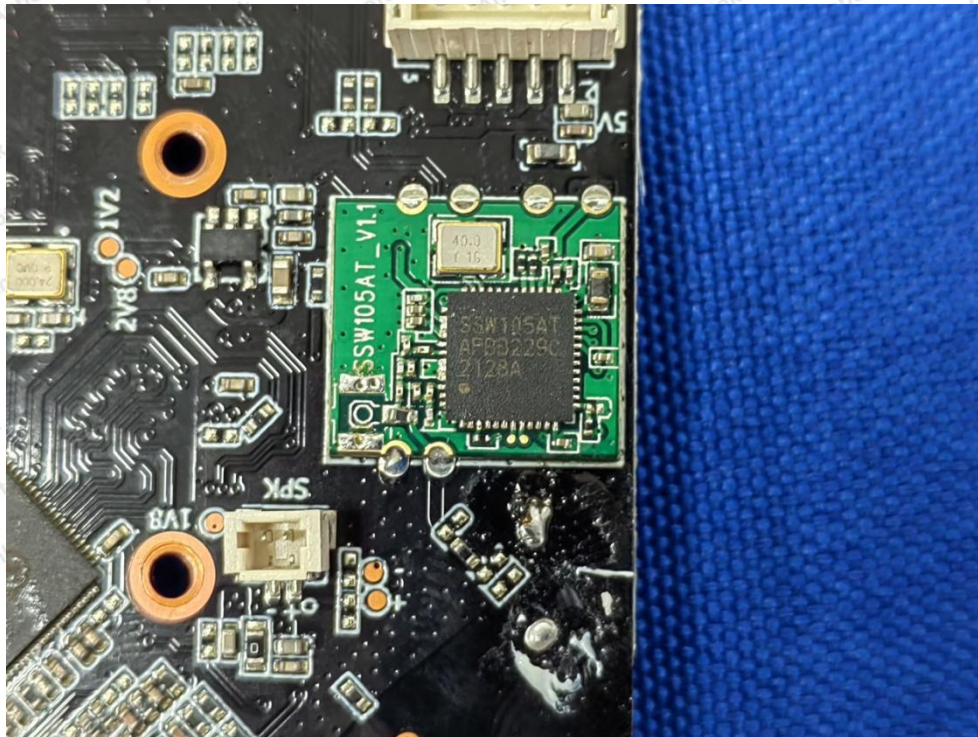
APPENDIX III -- INTERNAL PHOTOGRAPH

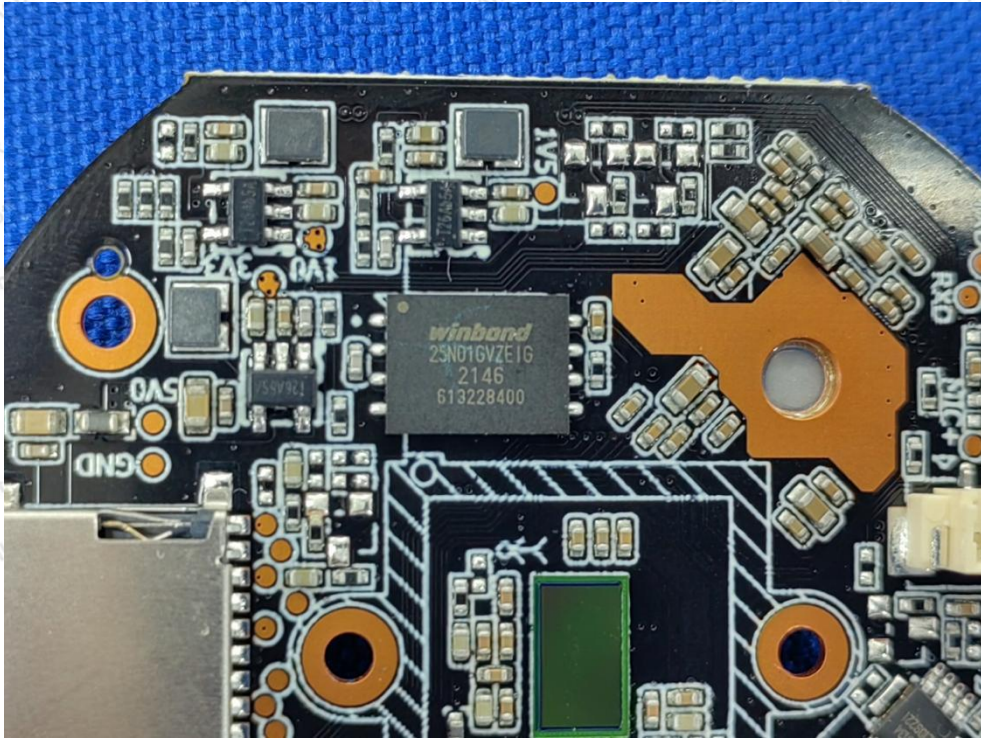




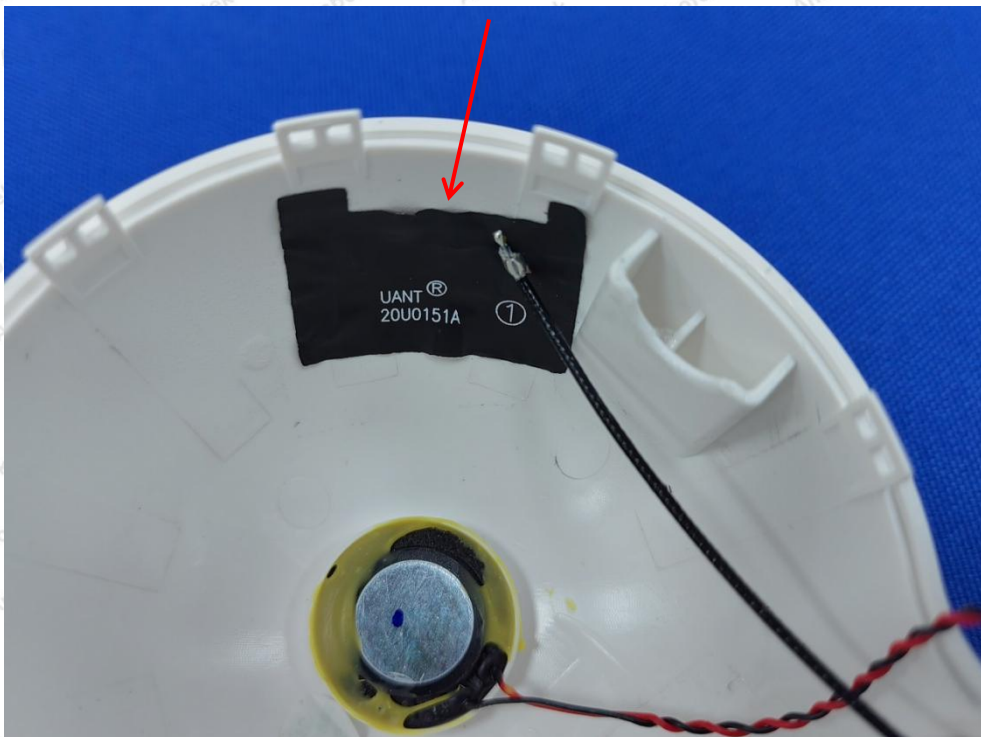








ANT



APPENDIX IV – Appendix Test Data