


SPECIFICATION FOR APPROVAL

Customer Name: \_\_\_\_\_  
 Customer P/N: A12S  
 Jing Feng P/N: JF91041  
 Specification Description: 2.4G/5.8G WIFI Dual Band Antenna  
 Production Date: 2023-12-18

Factory Confirmation:

Department	CHECKED BY	APPROVED BY
RF Department	Tan Mu Chen	Wang Shuo
Structure Department	Liang Sen	Wang Shuo
Quality Department	Liu Xiao Jun	Wang Shuo

Customer Confirmation:

INSPECTION	CHECKED	APPROVED
		



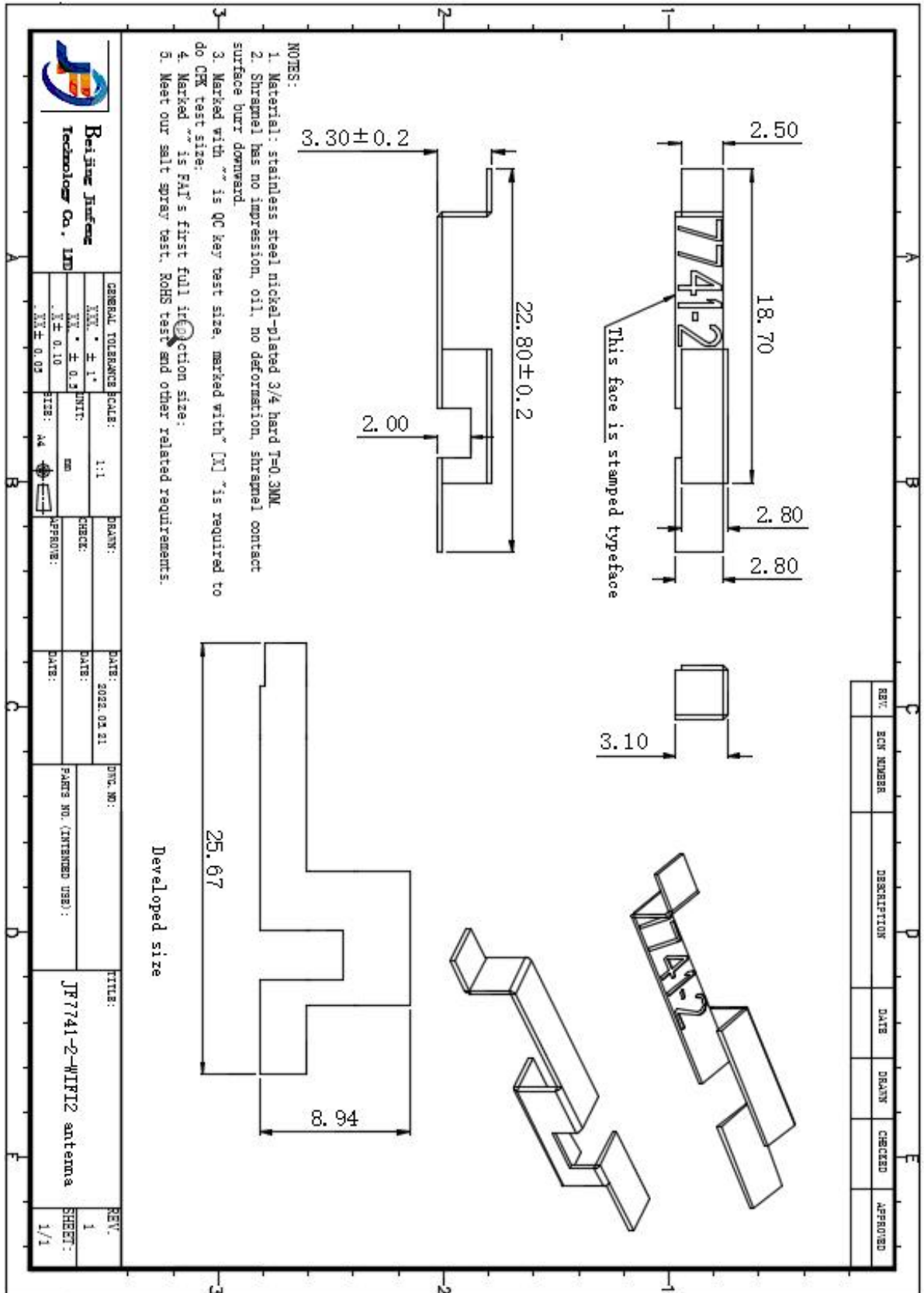
## Contents

1、Cover Signature Page .....	1
2、Text Control Record.....	2
3、Contents .....	3
4、Main Technical Specifications.....	4
5、Product Structure Drawing.....	5
6、Electrical Performance Test Report .....	6~8
7、OTA Test Data.....	9
8、Device Description .....	10

#### 4、 Main technical specifications

Electrical Parameters	
Frequency Range (MHZ)	2400-2500MHZ&5150-5850MHZ
Impedance ( $\Omega$ )	50 $\Omega$
VSWR	$\leq 2.0$
Peak Gain (dBi)	4.71dBi
Power Capacity	1W
Withstand Voltage Test	1KV
Polarization	Linear, Vertical
Radiation	Omni-Directional
Mechanical Parameters	
Salt Spray Test	24H
Environmental Parameters	
Operating Temp	-60 $^{\circ}$ C--150 $^{\circ}$ C
Storage Temp	-60 $^{\circ}$ C--150 $^{\circ}$ C

## 5、Product drawing



## 6、Electrical Performance Test report

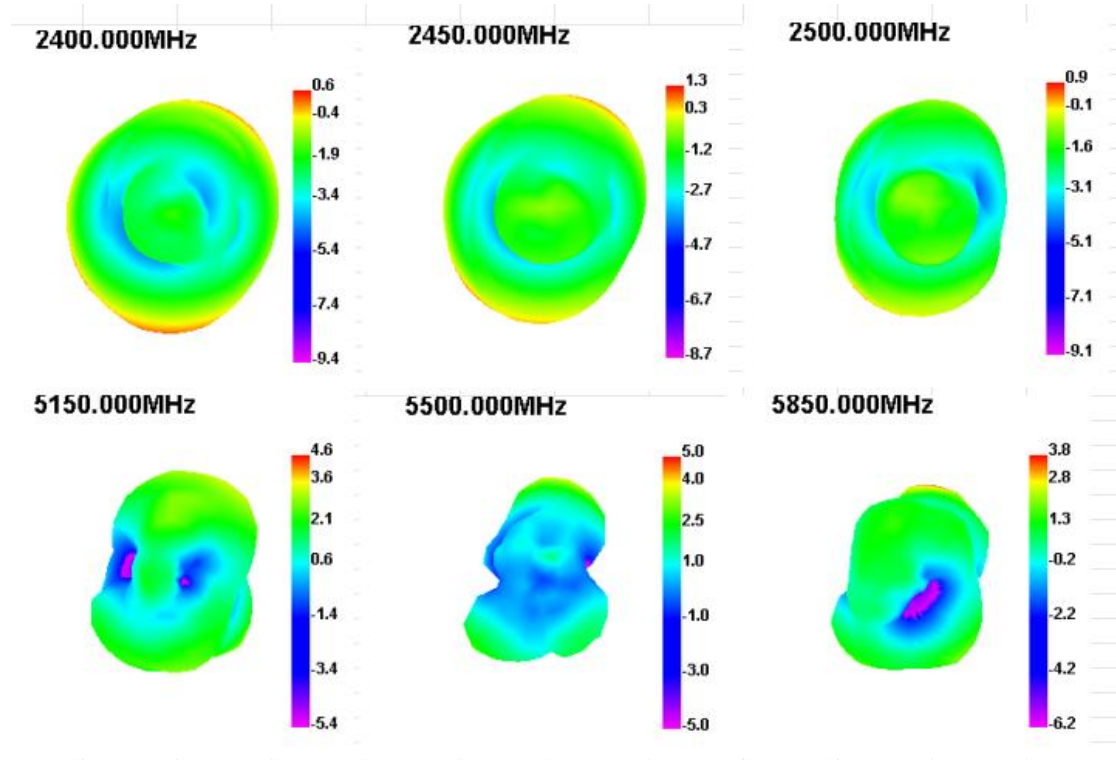
### 2. 4G&5.8G-VSWR/Return Loss



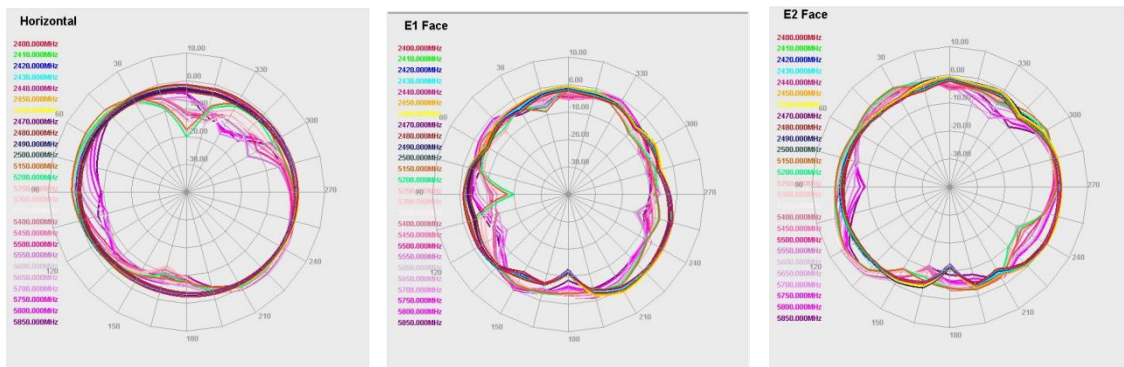
## Efficiency &amp; gain:

Freq (MHz)	Effi (%)	Gain (dBi)
2400	60.98	0.61
2410	62.24	1.21
2420	63.13	1.54
2430	65.03	0.92
2440	60.87	0.86
2450	70.43	1.29
2460	72.29	2.01
2470	66.5	1.81
2480	54.02	0.81
2490	66.46	1.26
2500	60.26	0.88
Freq (MHz)	Effi (%)	Gain (dBi)
5100	69.92	4.63
5200	66.18	4.59
5300	63.1	3.42
5400	63.55	4.51
5500	68.1	4.67
5600	65.39	4.69
5700	64.77	4.65
5800	66.12	4.71
5900	57.52	3.97

### 3D Radiation pattern:



### 2D Radiation pattern:

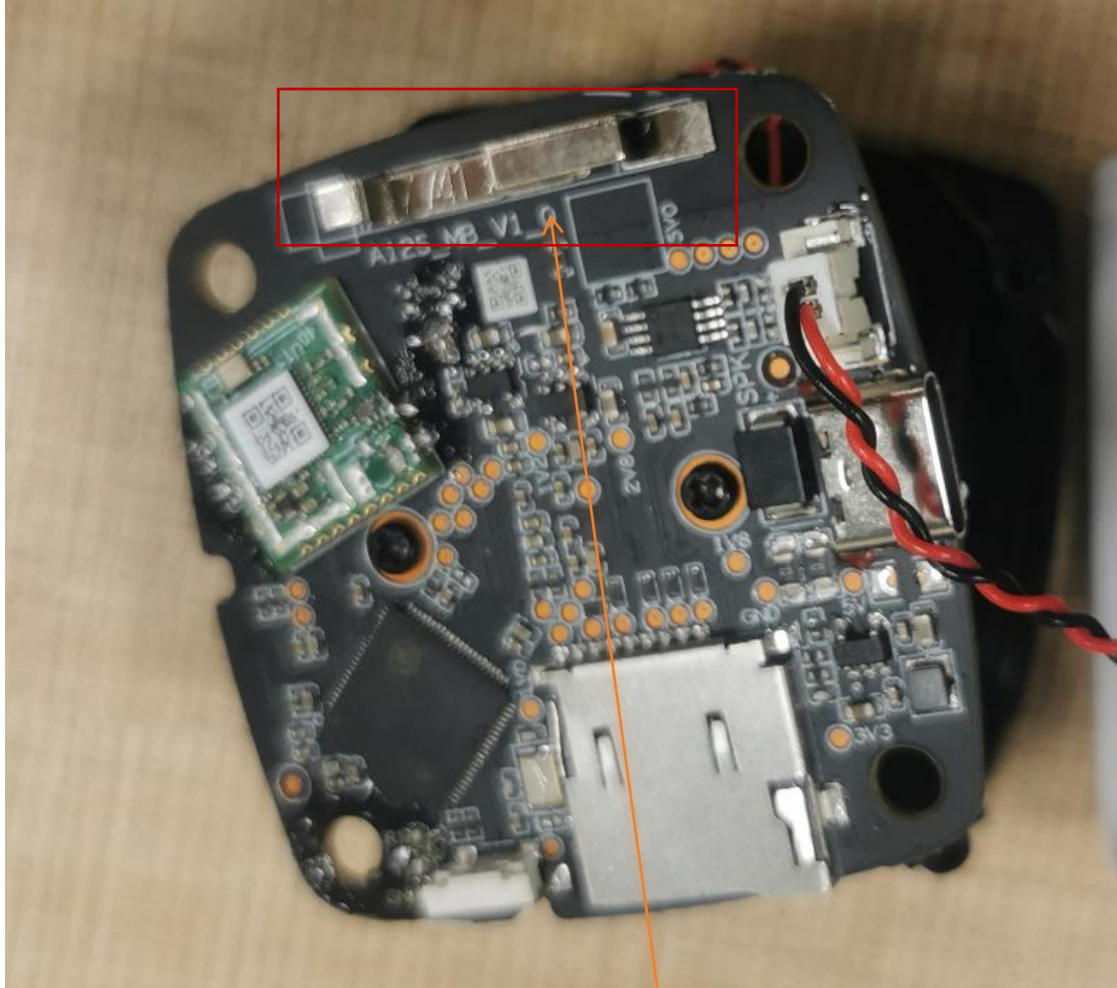




## 7、OTA Test Data

<b>2.4G</b> (802.11b mode)	Channel	Power (dbm) 1M	Sensitivity (dbm) 11M
	1	15.21	-77.94
	7	15.61	-76.37
	13	15.04	-76.56
<b>2.4G</b> (802.11g mode)	Channel	Power (dbm) 6M	Sensitivity (dbm) 54M
	1	13.75	-74.74
	7	14.07	-74.16
	13	12.26	-73.15
<b>2.4G</b> (802.11n mode)	Channel	Power (dbm) MSC0	Sensitivity (dbm) MSC7
	1	13.29	-73.1
	7	15.18	-74.53
	13	12.98	-73.21
<b>5.8G</b> (802.11a mode)	Channel	Power (dbm) 6M	Sensitivity (dbm) 54M
	36	12.24	-71.11
	64	14.74	-76.8
	149	9.87	-74.72
	161	8.93	-73.45
<b>5.8G</b> (802.11n mode)	Channel	Power (dbm) MSC0	Sensitivity (dbm) MSC7
	36	11.37	-73.21
	64	13.23	-74.54
	149	10.14	-72.39
	161	8.97	-71.32

## 8、Device Description



2.4G&5.8G Dual Band Antenna