

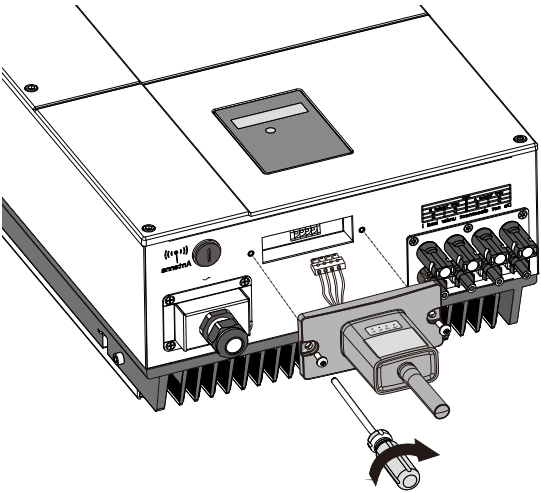
# 小蜜蜂（Wi-Fi版）数采器

## 快速安装指南

### 1. 电气连接

- ① 根据数采器型号在右方找到对应的接口编码。
- ② 根据接口编码按照对应图示进行电气连接。
- ③ 确认数采器各指示灯状态正常（步骤2.3连网设置成功后，四灯常亮为正常）。

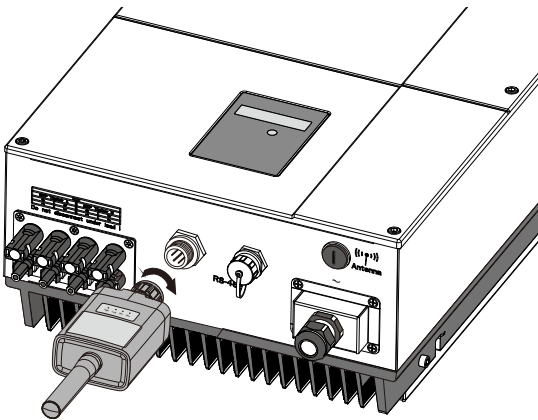
数采器型号	接口编码	接口图例
Wi-Fi PlugII - 01/11（方案1）	❶	
Wi-Fi PlugII - 04（方案2）		
Wi-Fi PlugII - 02/10	❷	
Wi-Fi PlugII - 07	❸	
Wi-Fi PlugII - 03/05/06/08/12/13	❹	



❶

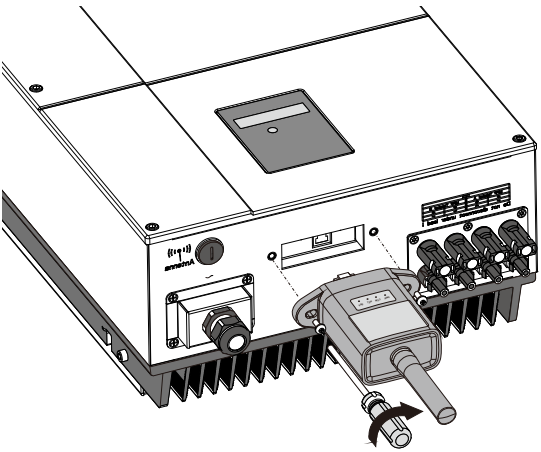
- 方案1：
- ① 将数采器的4PIN电源线与逆变器4PIN端子对接。
  - ② 用螺丝把数采器固定在逆变器上。

- 方案2：
- ① 将数采器的2PIN绿色接头与逆变器的RS-485端子对接。
  - ② 将数采器的5PIN电源线与逆变器5PIN端子对接。
  - ③ 用螺丝把数采器固定在逆变器上。



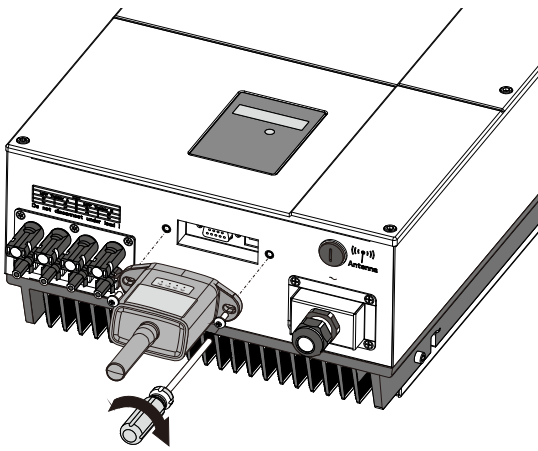
❷

- ① 将数采器的4孔航空接头与逆变器的航空接口对齐，插紧。
- ② 将数采器的螺帽与逆变器的螺杆拧紧。



❸

- ① 将数采器的RJ-45水晶头与逆变器的RJ-45母插座对齐，插紧。
- ② 用螺丝把数采器固定在逆变器上。



❹

- ① 将数采器的串口与逆变器的串口对齐，插紧。
- ② 用螺丝把数采器固定在逆变器上。

### 2. 无线路由器连接

#### 2.1 APP下载

- ① 扫描右方的二维码，下载APP。



苹果 iOS



安卓 Android



#### 2.2 Wi-Fi数采器连接

- ① 打开APP，点击“Wi-Fi配置”按钮，进入“Wi-Fi配置”页面。
- ② 在“Wi-Fi配置”页面，点击“连接Wi-Fi数采器”按钮（安卓手机无需此步骤）。
- ③ 找到与数采器PN号相同的Wi-Fi进行连接（初始密码：12345678）。

#### 2.3 连网参数设置

- ① 点击“连网设置”按钮，进入该界面。
- ② 填写相关信息，完成连网设置。
- ③ 断开2.2步骤所连接的数采器Wi-Fi。
- ④ 重新连接可上网的Wi-Fi热点或运营商网络。



### 3. 注册账号与创建电站

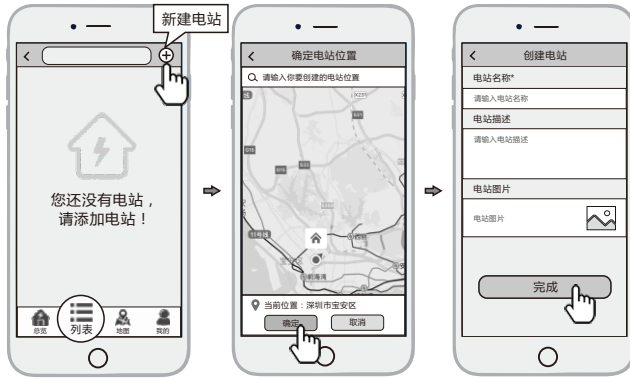


#### 3.1 账号注册

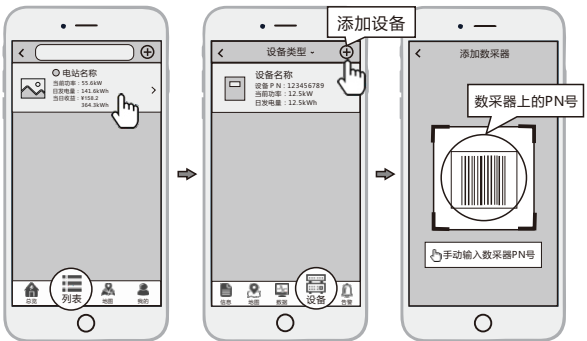
- ① 在APP首页，点击“注册”按钮，按提示填写相关信息，完成注册。

#### 3.2 电站创建

- ① 登录APP，选择“列表”菜单。
- ② 点击右上角的“+”按钮，进入到“创建电站”页面。
- ③ 根据提示输入相关信息，完成电站创建。



注意：一个账号可创建多个电站，一个电站可添加多个数采器，若您只有一个数采器，则不需此步骤。



#### 3.3 添加多个数采器





- ① 点击已经建好的电站，进入该电站主界面。
- ② 选择“设备”菜单，点击右上角的“+”按钮，进入到“添加数采器”页面。
- ③ 扫描数采器的PN号，添加数采器；如果扫描不成功，可以手动输入。

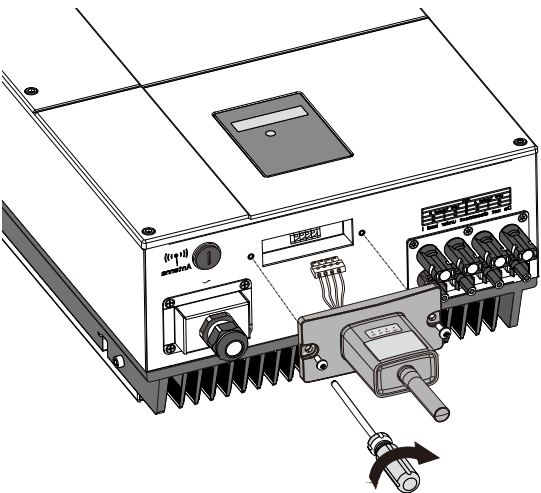
# Wi-Fi PlugII

## Quick Installation Guideline

### 1. Installation

- Find the corresponding interface code on the right table, according to the model of the datalogger.
- Based on the corresponding icon, finish the installation according to the interface code.
- Confirm the status of the LED light (After step2.3, when 4 LED light keep on, showing the normal working status).

Datalogger Model	Interface Code	Interface Icon
Wi-Fi PlugII - 01/11 ( Method 1 )	①	
Wi-Fi PlugII - 04 ( Method 2 )		
Wi-Fi PlugII - 02/10	②	
Wi-Fi PlugII - 07	③	
Wi-Fi PlugII - 03/05/06/08/12/13	④	



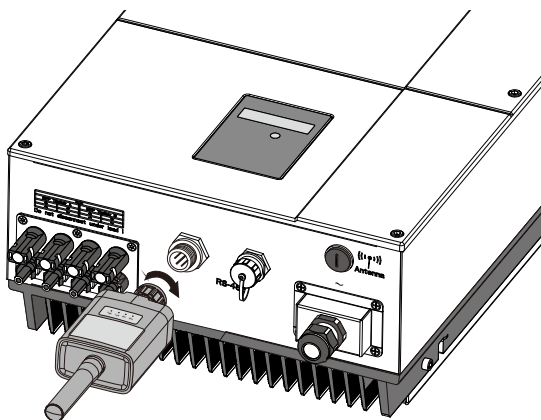
①

#### Method 1 :

- Connect the 4PIN power cable of the Wi-Fi PlugII to the inverter.
- Fasten the Wi-Fi PlugII to the inverter with the screw.

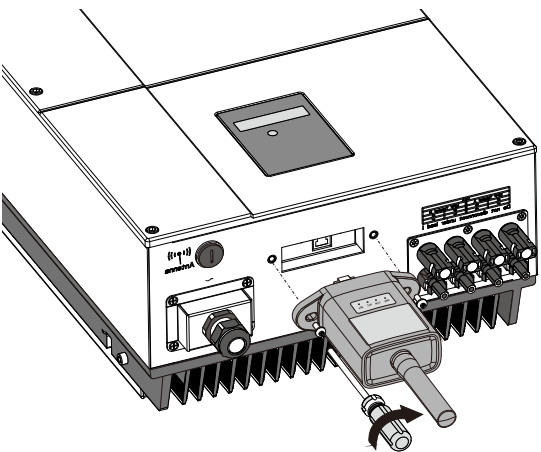
#### Method 2 :

- Connect the 2 PIN green interface of the Wi-Fi PlugII to the RS-485 terminal of the inverter.
- Connect the 5PIN power cable of the Wi-Fi PlugII to the inverter.
- Fasten the Wi-Fi PlugII to the inverter with the screw.



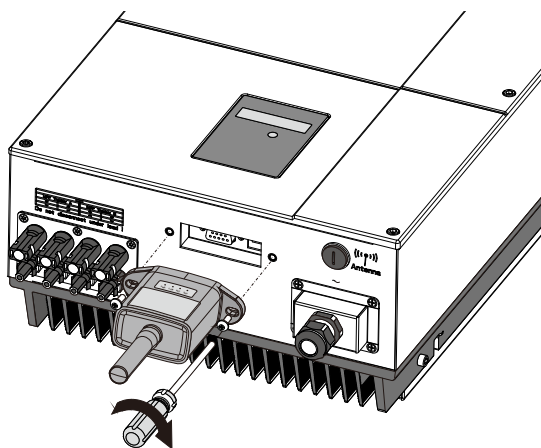
②

- Align the 4-hole aviation plug of the Wi-Fi PlugII with the inverter and plug it in.
- Tighten the nut of the Wi-Fi PlugII to the inverter.



③

- Align the RJ-45 crystal head of the Wi-Fi PlugII with the inverter and insert it in tightly.
- Fasten the Wi-Fi PlugII to the inverter with the screw.



④

- Align the serial port of the Wi-Fi PlugII with the inverter and plug it in tightly.
- Fasten the Wi-Fi PlugII to the inverter with the screw.

### 2. Wireless Router Connection

#### 2.1 Download APP

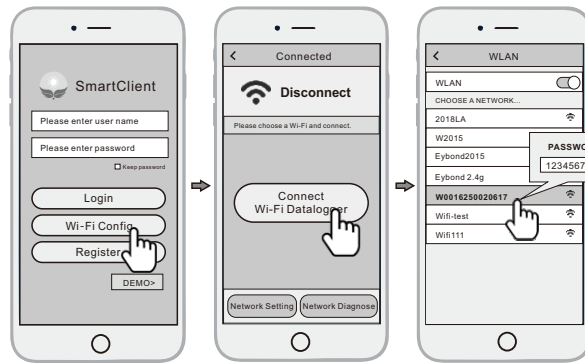
- Scan the QR Code on the right side and download the APP.



iOS



Android

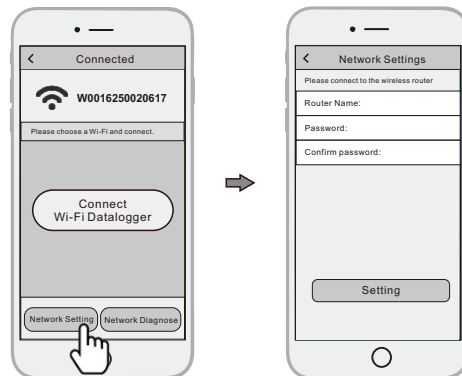


#### 2.2 Connect Wi-Fi Datalogger

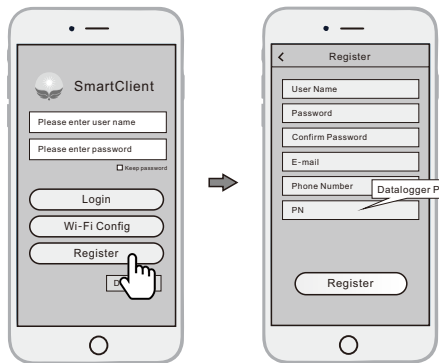
- Open the APP, tap the **Wi-Fi Config** button to enter this page.
- Tap the **Connect Wi-Fi Datalogger** button on the Connected page (Android phone has no need of this step) .
- Select the same number of Wi-Fi PlugII PN to connect. (Initial Password: 12345678)

#### 2.3 Network Setting

- After the connection completes, tap the **Network Setting** button.
- According to the prompts, type in the information to finish the network setting.
- Reconnect the Wi-Fi or Cellular Data which can surf the Internet instead of the Wi-Fi connected by step 2.2.



### 3. Create Account And Plant

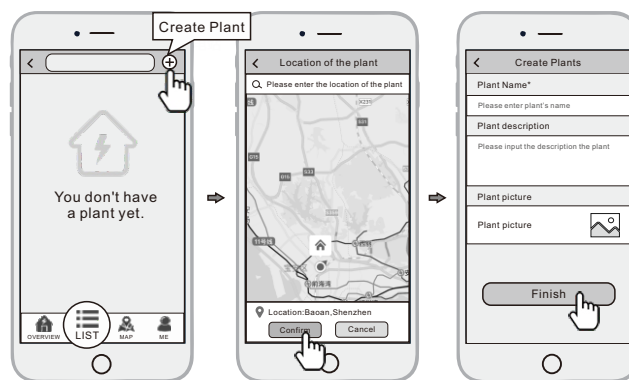


#### 3.1 Create Account

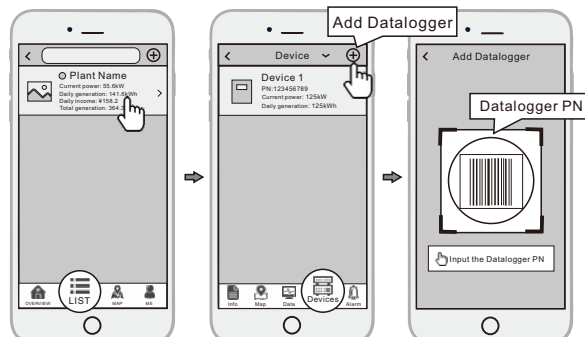
- Open the APP, tap the **Register** button to enter this page.
- According to the prompts, type in the information to create an account.

#### 3.2 Create Plant

- Login the account and click the **list** button on the bottom of the home page.
- Tap the **+** button at the top-right corner of the list page
- According to the prompts, type in the information to finish creating plant.



Note: One account can create multiple plants and one plant can add multiple dataloggers. If you only have one datalogger, you could ignore this step.



#### 3.3 Add Multiple Dataloggers

- Tap the new plant you just created, and enter its home page.
- Click the **Device** button on the bottom of the home page.
- Tap the **+** button at the top-right corner to add the datalogger.
- Scan the datalogger PN on the Wi-Fi PlugII, or input it manually.

#### FCC Warning Statement

Changes or modifications not expressly approved by the party responsible for compliance could void the user's authority to operate the equipment. This equipment has been tested and found to comply with the limits for a Class B digital device, pursuant to Part 15 of the FCC Rules. These limits are designed to provide reasonable protection against harmful interference in a residential installation. This equipment generates uses and can radiate radio frequency energy and, if not installed and used in accordance with the instructions, may cause harmful interference to radio communications. However, there is no guarantee that interference will not occur in a particular installation. If this equipment does cause harmful interference to radio or television reception, which can be determined by turning the equipment off and on, the user is encouraged to try to correct the interference by one or more of the following measures:

- - Reorient or relocate the receiving antenna.
- - Increase the separation between the equipment and receiver.
- - Connect the equipment into an outlet on a circuit different from that to which the receiver is connected.
- - Consult the dealer or an experienced radio/TV technician for help.

This device complies with part 15 of the FCC Rules. Operation is subject to the following two conditions: (1) This device may not cause harmful interference, and (2) this device must accept any interference received, including interference that may cause undesired operation.

#### RF Exposure Statement

To maintain compliance with FCC's RF Exposure guidelines, This equipment should be installed and operated with minimum distance of 20cm the radiator your body. This device and its antenna(s) must not be co-located or operation in conjunction with any other antenna or transmitter.