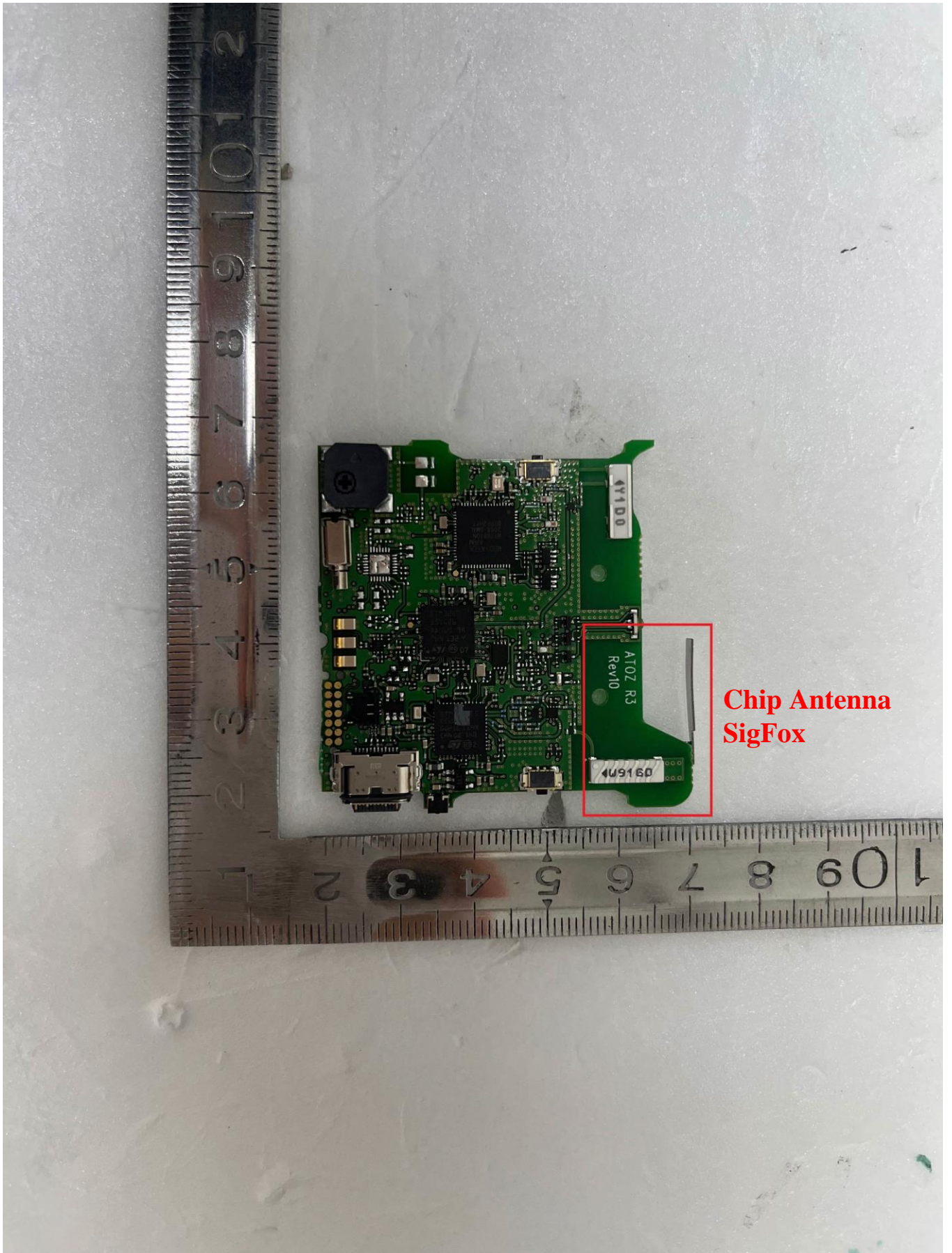
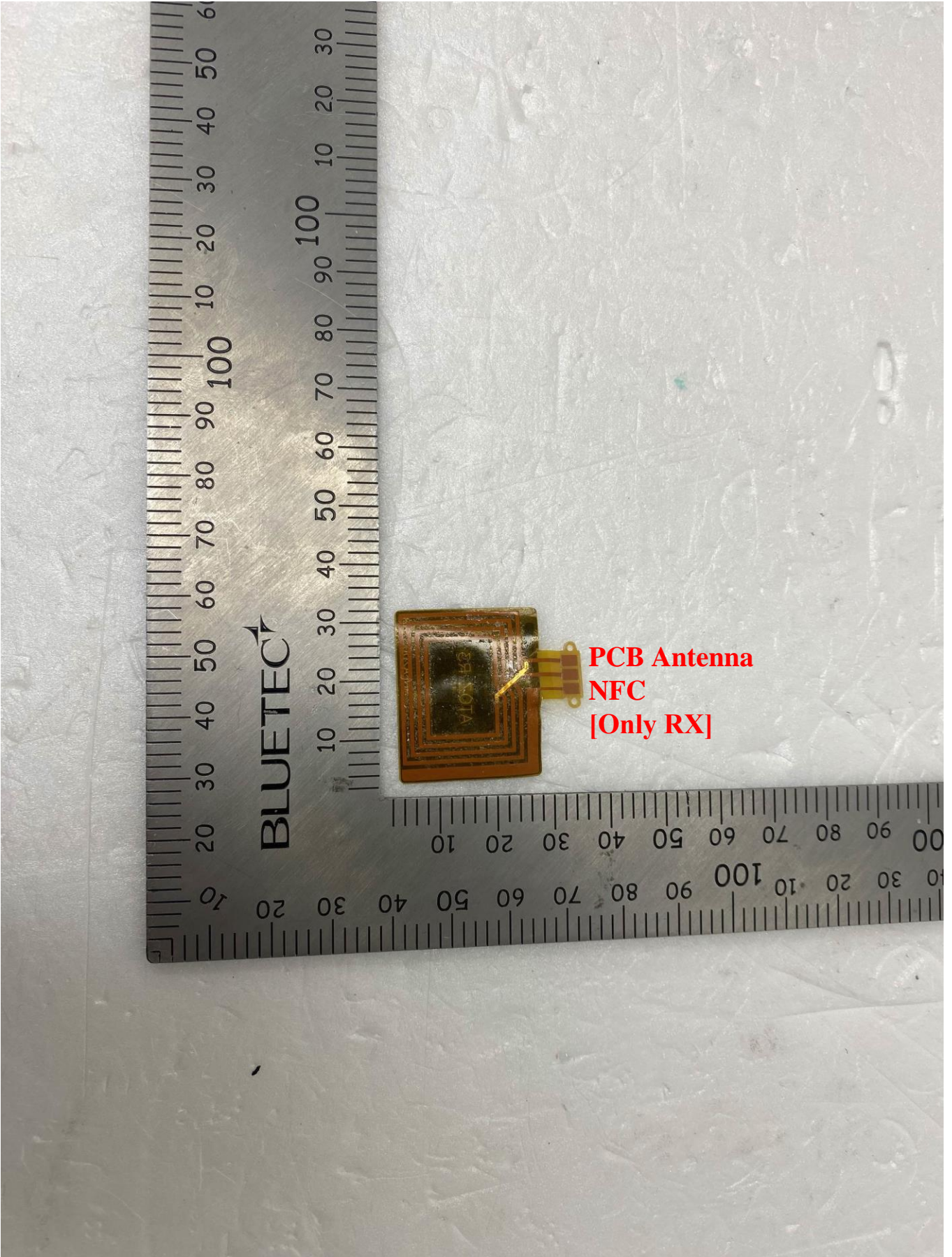


**Chip Antenna  
WLAN/Bluetooth LE**



**Chip Antenna  
SigFox**



# Antenna Measurement Report

---

<i>Model</i>	<i>ATOZ R3</i>
<i>Application</i>	<i>Sigfox / BLE/ Wifi</i>

---

# 1. Summary of the antenna test

## 1) Test Condition

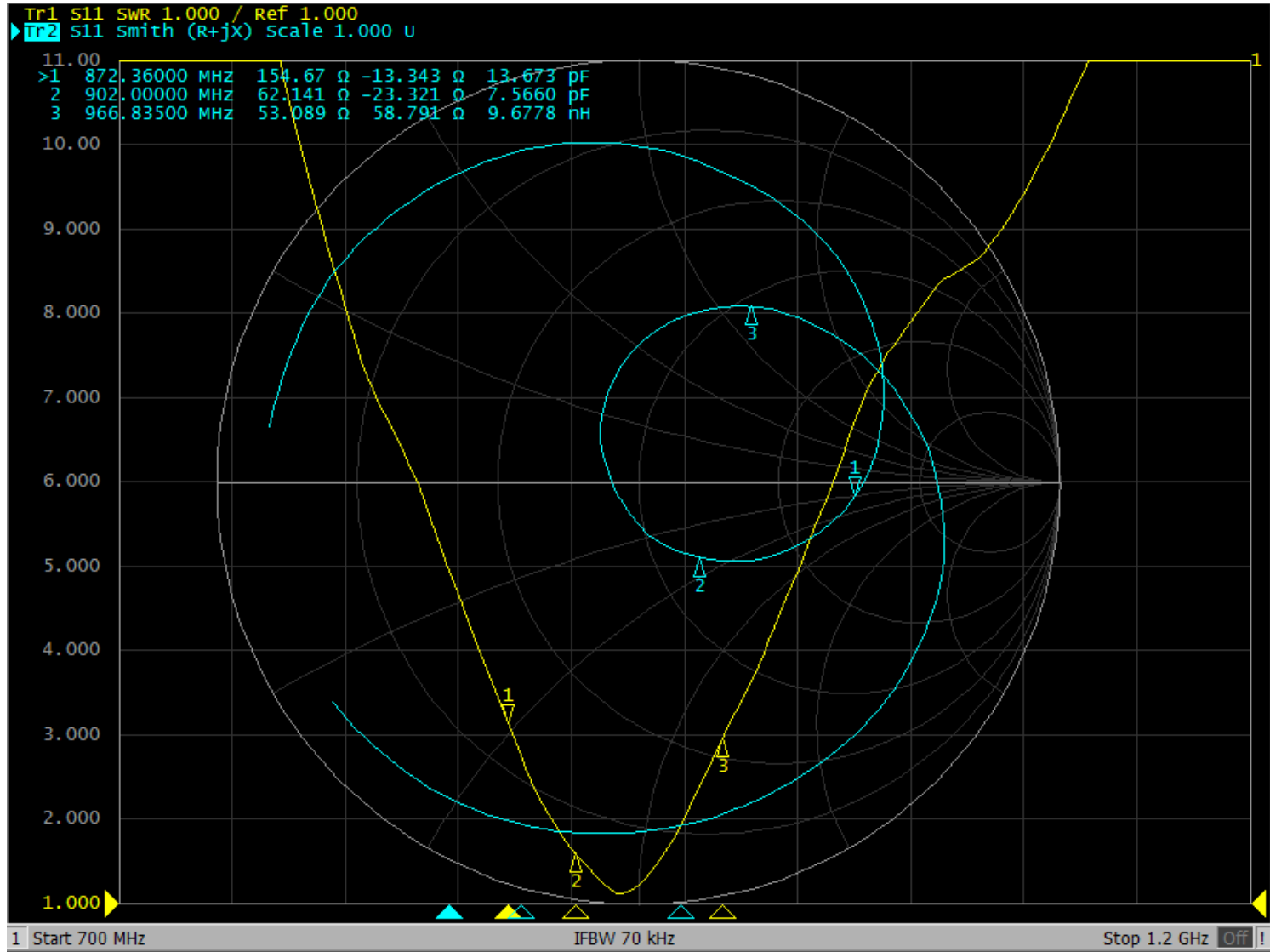
Test No	Application
#1-1	900MHz
#1-2	2.4GHz
#1-3	5GHz

## 2) Radiation Gain Table

Frequency [MHz]	Efficiency [%]	Avg. Gain [dBi]	Peak Gain [dBi]
850	26.16	-5.82	-1.42
900	53.62	-2.71	1.06
950	50.58	-2.96	0.5
2400	46.35	-3.34	0.13
2450	31.8	-4.98	-0.72
2500	27.92	-5.54	-0.21
5150	35.55	-4.49	-0.05
5450	27.48	-5.61	-0.75
5750	26.63	-5.75	0

# 2. Test : 900MHz

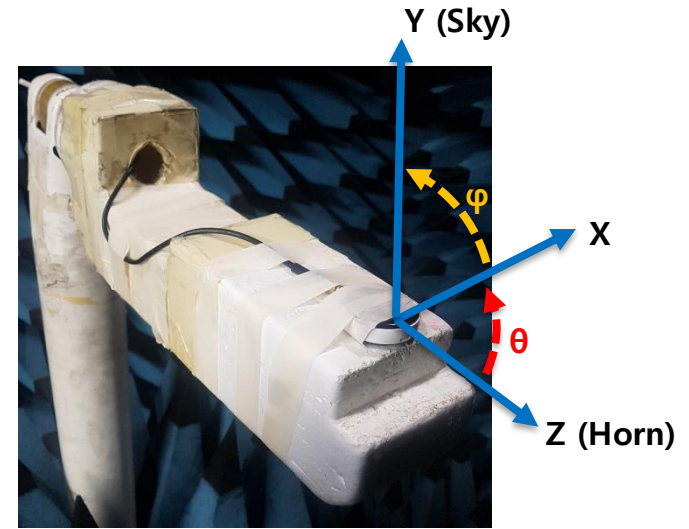
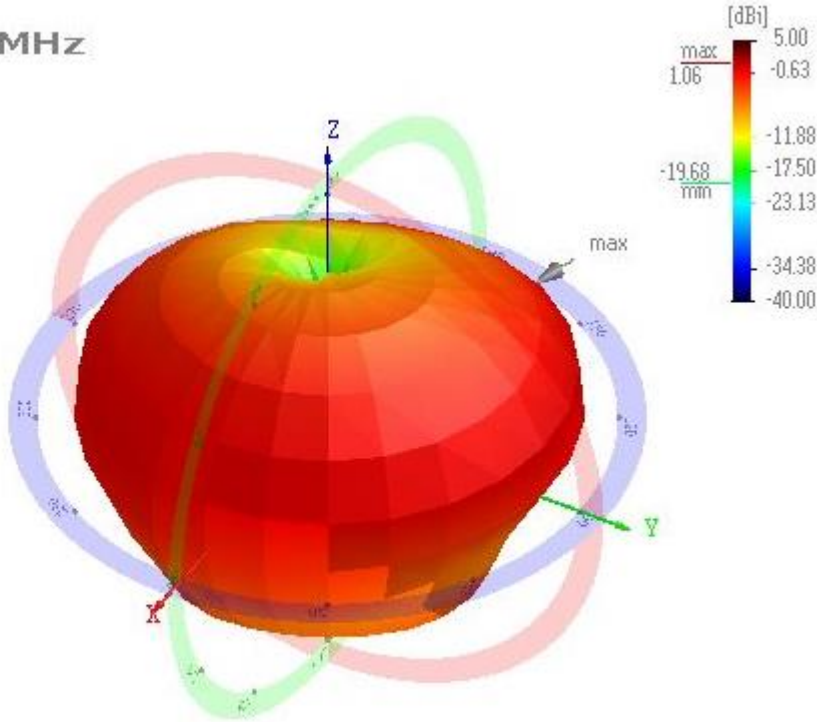
## 1) Antenna S-Parameter



# 2. Test : 900MHz

## 2) 3D Radiation Pattern

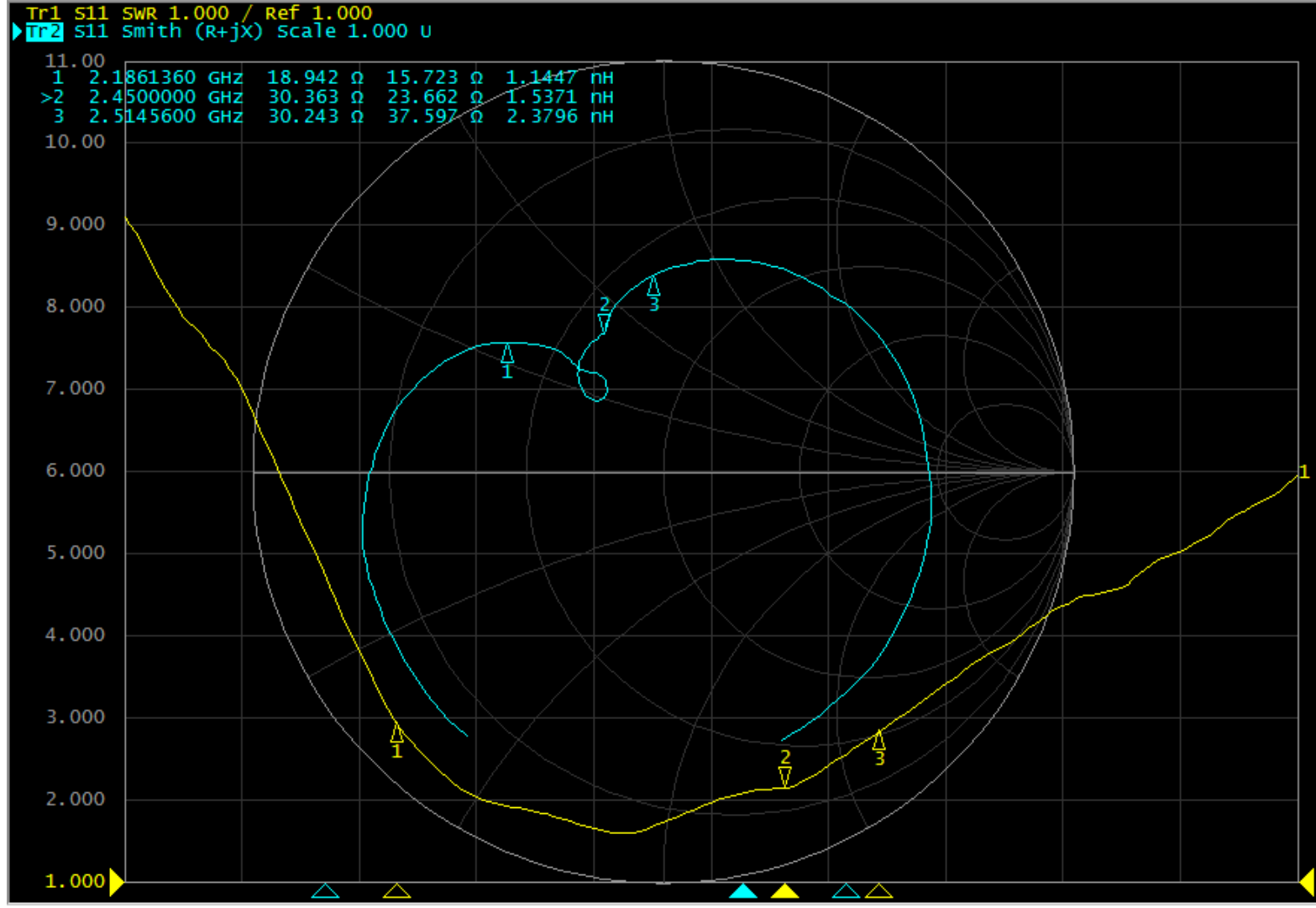
900.00MHz



zm

# 2. Test : 2.4GHz

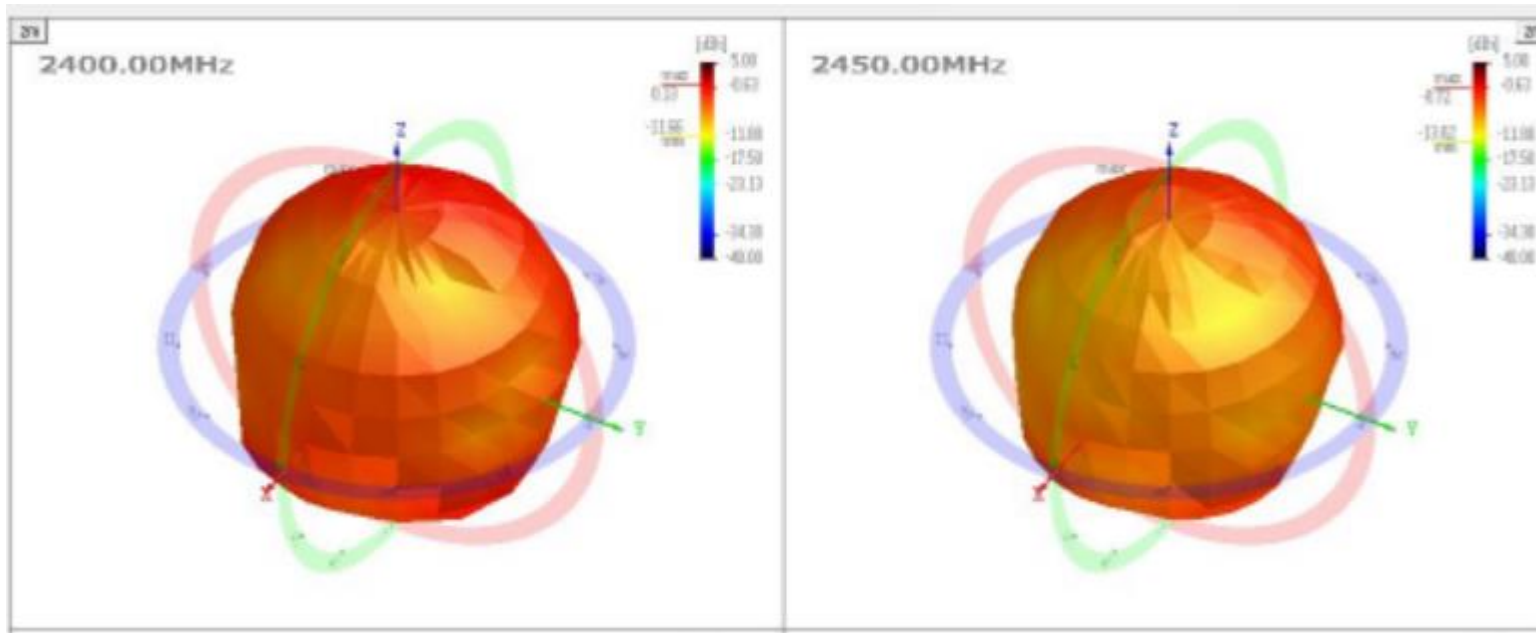
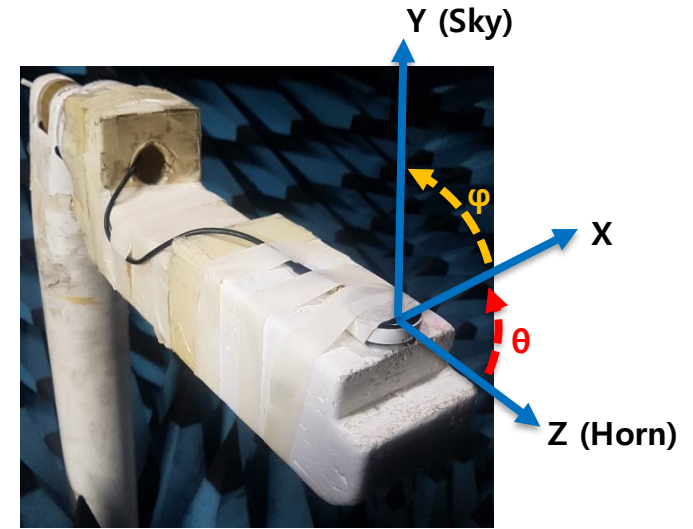
## 1) Antenna S-Parameter





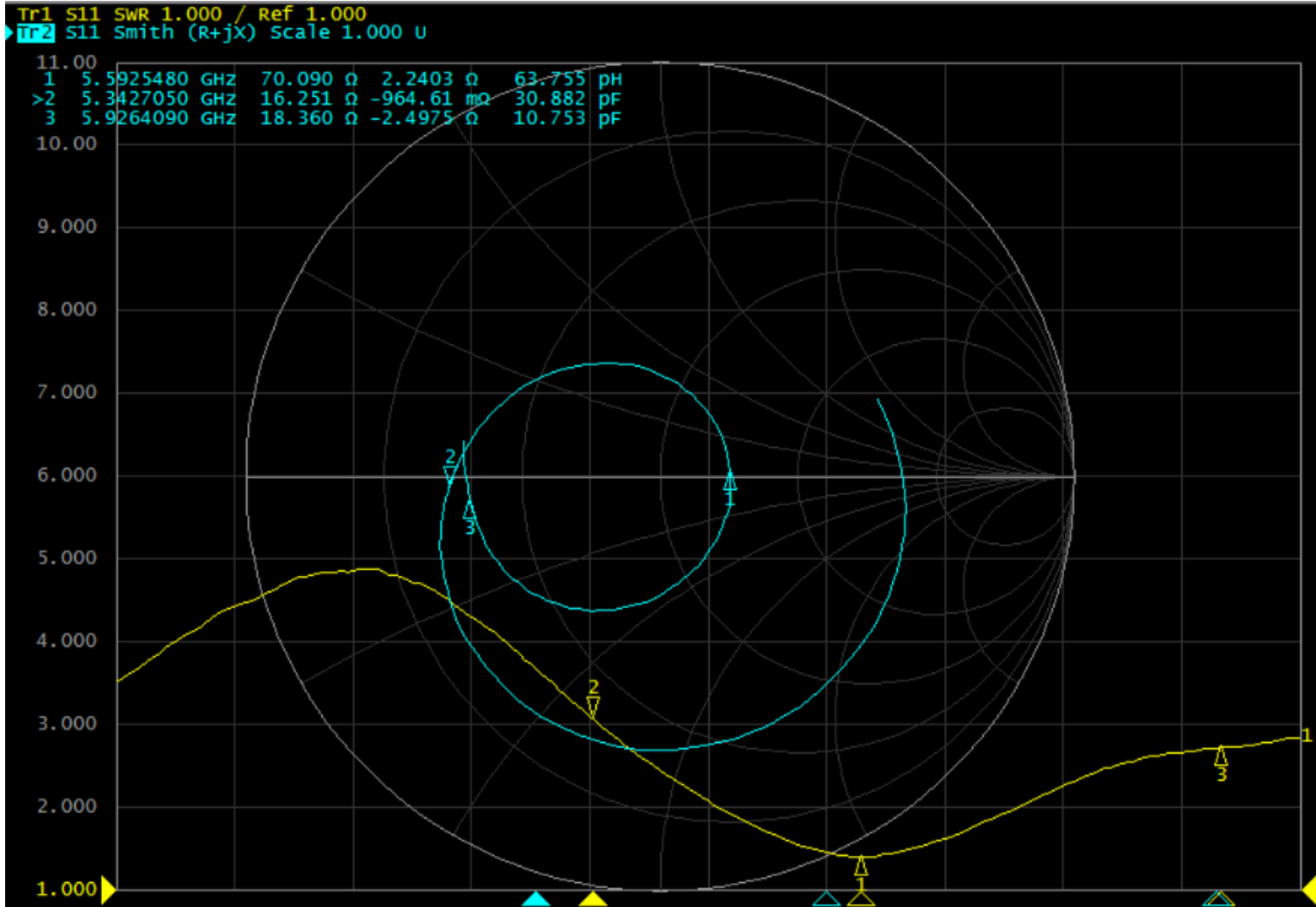
# 2. Test : 2.4GHz

## 2) 3D Radiation Pattern



# 2. Test : 5GHz

## 1) Antenna S-Parameter



# 2. Test : 5GHz

## 2) 3D Radiation Pattern

