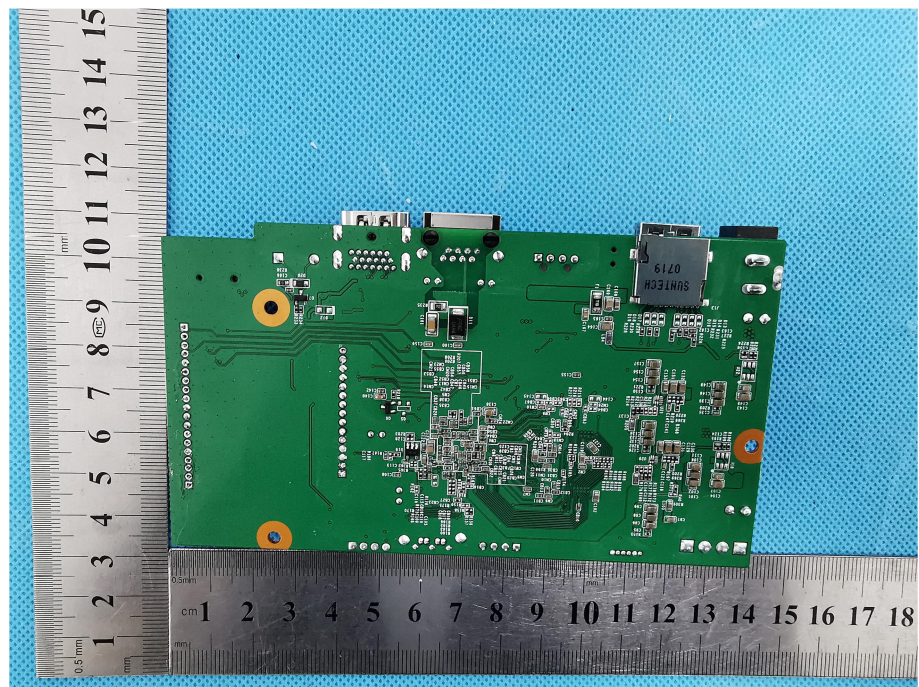
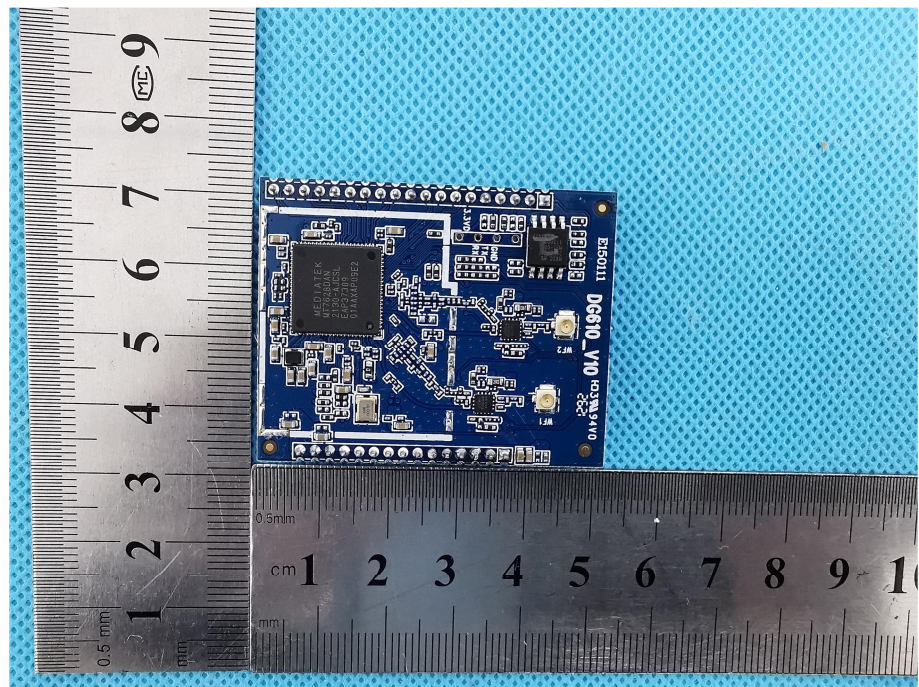
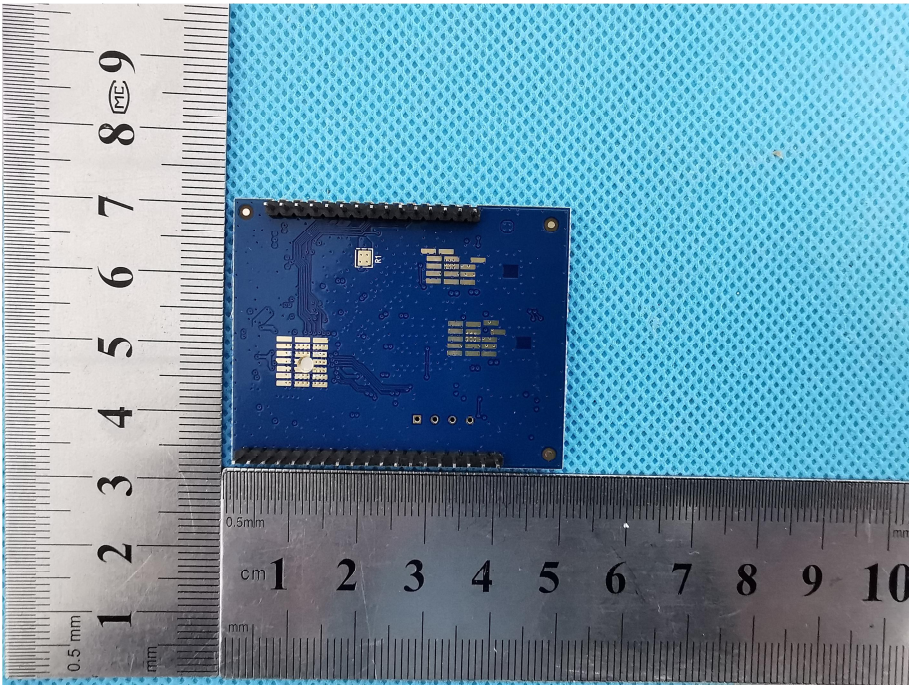
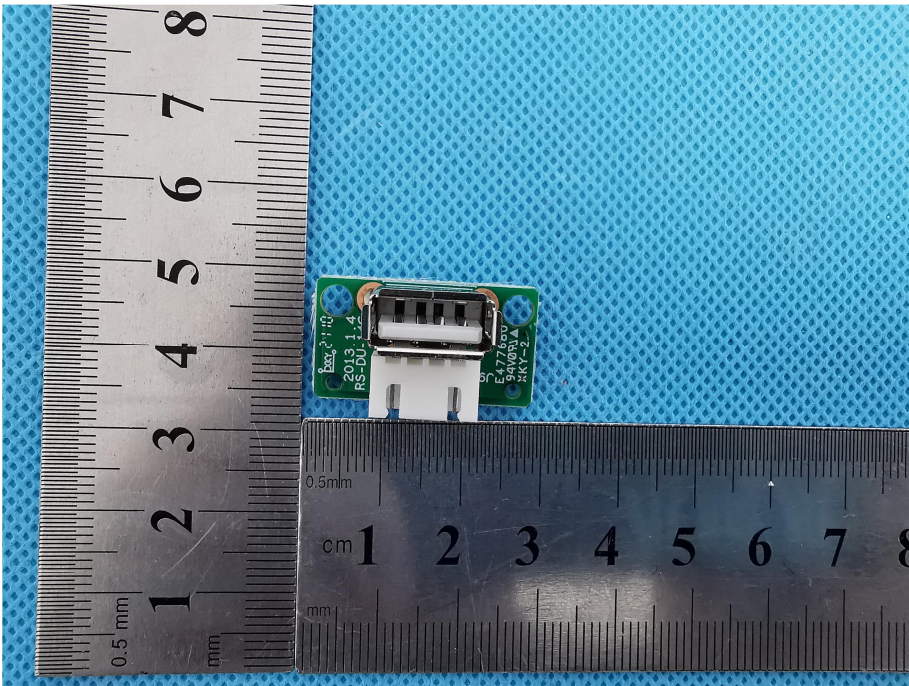


**Solder
Board-Component View
3**



**Solder
Board-Component View
4**



<p style="text-align: center;">Solder Board-Component View 5</p>	 <p>A photograph of a blue printed circuit board (PCB) component. The board is rectangular and features several integrated circuits (chips) and surface components. It is placed on a blue perforated metal surface. A metal ruler is positioned vertically to the left of the board, showing markings from 1 to 9 centimeters. A horizontal metal ruler is placed below the board, showing markings from 1 to 10 centimeters. The board's dimensions are approximately 4.5 cm by 3.5 cm.</p>
<p style="text-align: center;">Solder Board-Component View 6</p>	 <p>A photograph of a small green PCB component with a white connector. The board is rectangular and has some text printed on it, including "2013.1.4", "RS-DU-1.1", "94V0B2V", and "KKY-2". It is placed on a blue perforated metal surface. A metal ruler is positioned vertically to the left of the board, showing markings from 1 to 8 centimeters. A horizontal metal ruler is placed below the board, showing markings from 1 to 8 centimeters. The board's dimensions are approximately 1.5 cm by 1.5 cm.</p>