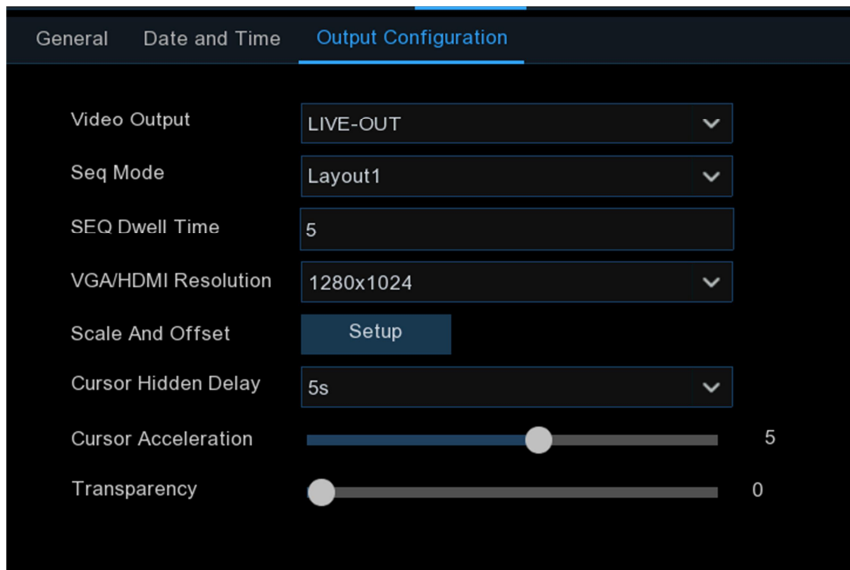


5.6.2.1 LIVE-OUT



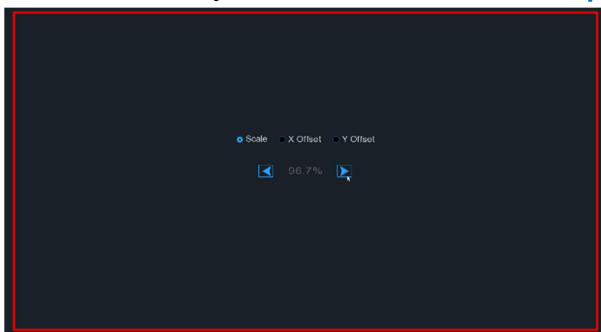
Choose **LIVE-OUT** from the Video Output drop-down menu.

SEQ Mode: Select how many video channels you would like to display when your WIRELESS NVR is in sequence mode.

SEQ Dwell Time: Enter in seconds the maximum length of time you would like to display a video channel in sequence mode before displaying the next video channel (300 seconds is the maximum).

Output Resolution: Select a display resolution that is suitable for your TV. 1920 x 1080 will suit most TVs. If your WIRELESS NVR supports 4K output resolution, you can select either 2K (2560 x 1440) or 4K (3840 x 2160) to take advantage of the higher resolution that your 4K TV provides.

Scale and Offset: The WIRELESS NVR supports to adjust the size & position of the display screen to match your monitor or TV. Click **Setup** button to adjust.



Scale: To adjust the size of the displayed screen by scale.

X Offset: To move the displayed screen to left or right.

Y Offset: To move the displayed screen to up or down.

Click once or hold the left button of your mouse on the arrow to adjust the size and position, or you can scroll the wheel of the mouse to adjust. Click the right button of your mouse to exit, and click **Apply** to save your modifications.

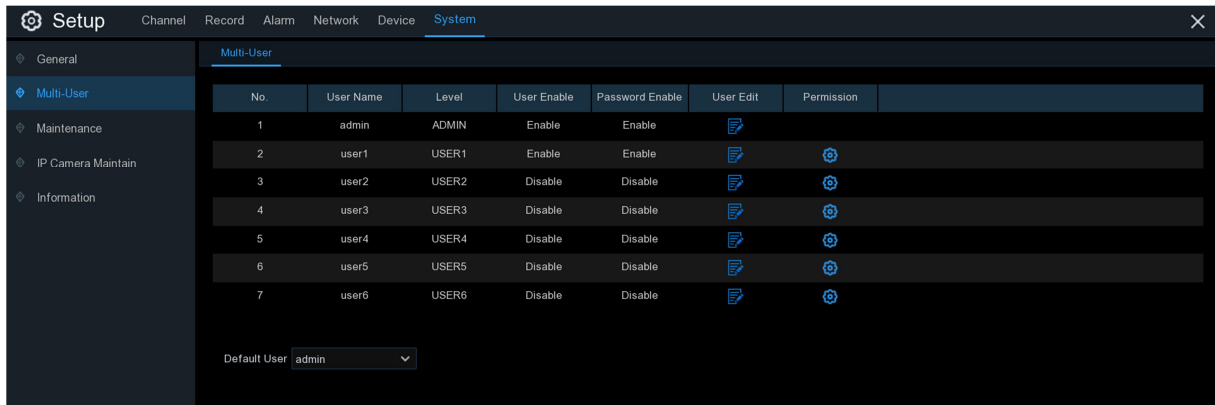
Cursor Hidden Delay: Click the drop-down menu to select the time your WIRELESS NVR will hide the mouse cursor when idle. You can also disable this by selecting "OFF" (password protection will be temporarily disabled).

Cursor Acceleration: To adjust the speed to move the mouse cursor.

Transparency: Click and hold the slider left or right to change how transparent the Menu Bar and Main Menu will appear on-screen. Adjust accordingly.

5.6.3 Multi-user

This menu allows you to configure the user name, password and user permission.

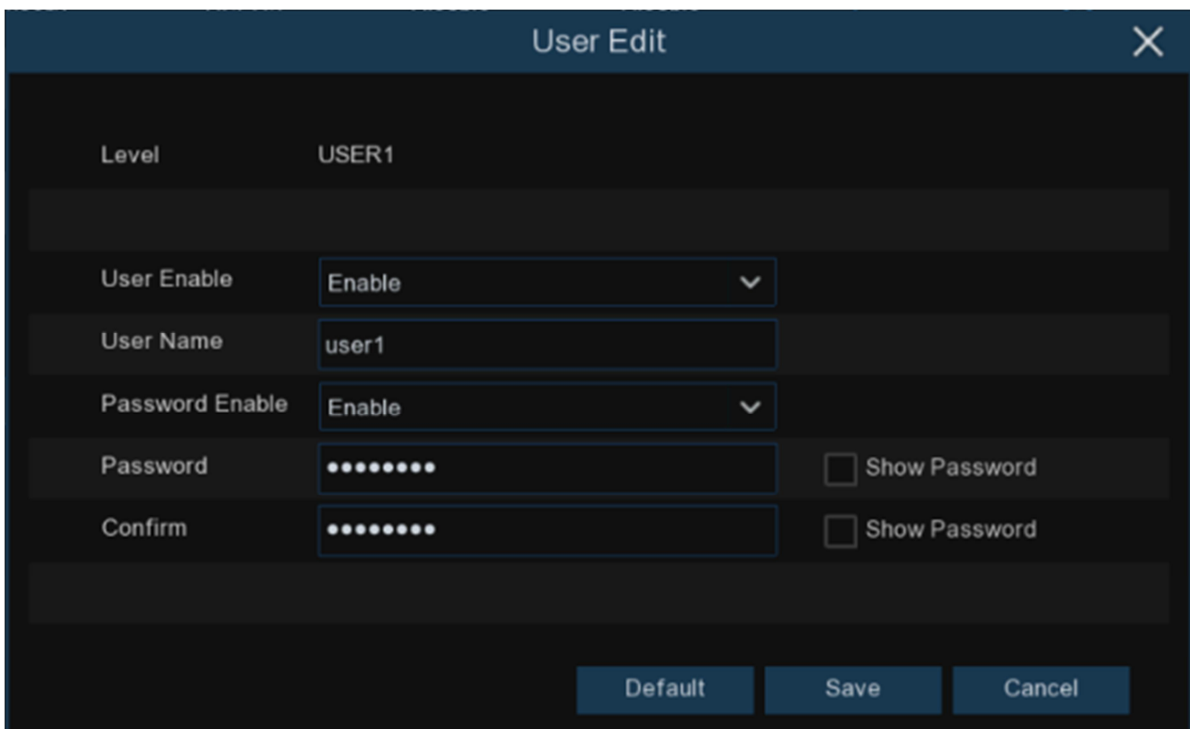


The system supports the following account types:

- ADMIN — System Administrator:** The administrator has full control of the system, and can change both administrator and user passwords and enable/disable password protection.
- USER — Normal User:** Users only have access to live viewing, search, playback, and other functions. You may set up multiple user accounts with varying levels of access to the system.

5.6.3.1 Changing Password

To change the password for the administrator or user accounts, click the User Edit icon . The password has to be a minimum of 8 characters and can contain a mixture of numbers and letters. Enter your new password again to confirm, and then click **Save** to save your new password. You will be required to input your old password to authenticate.
















The image shows an 'Authentication' dialog box with a dark theme. At the top, it says 'Authentication' with a close button (X). Below that, there are two input fields: 'User' containing 'admin' and 'Password' which is currently empty. To the right of the password field is a checkbox labeled 'Show Password' which is unchecked. At the bottom right, there are two buttons: 'Authenticate' and 'Cancel'.


Password Enable: It's strongly recommended to enable the password to protect your privacy. If you want to disable the password protection, please ensure your WIRELESS NVR is placed in a secure place.

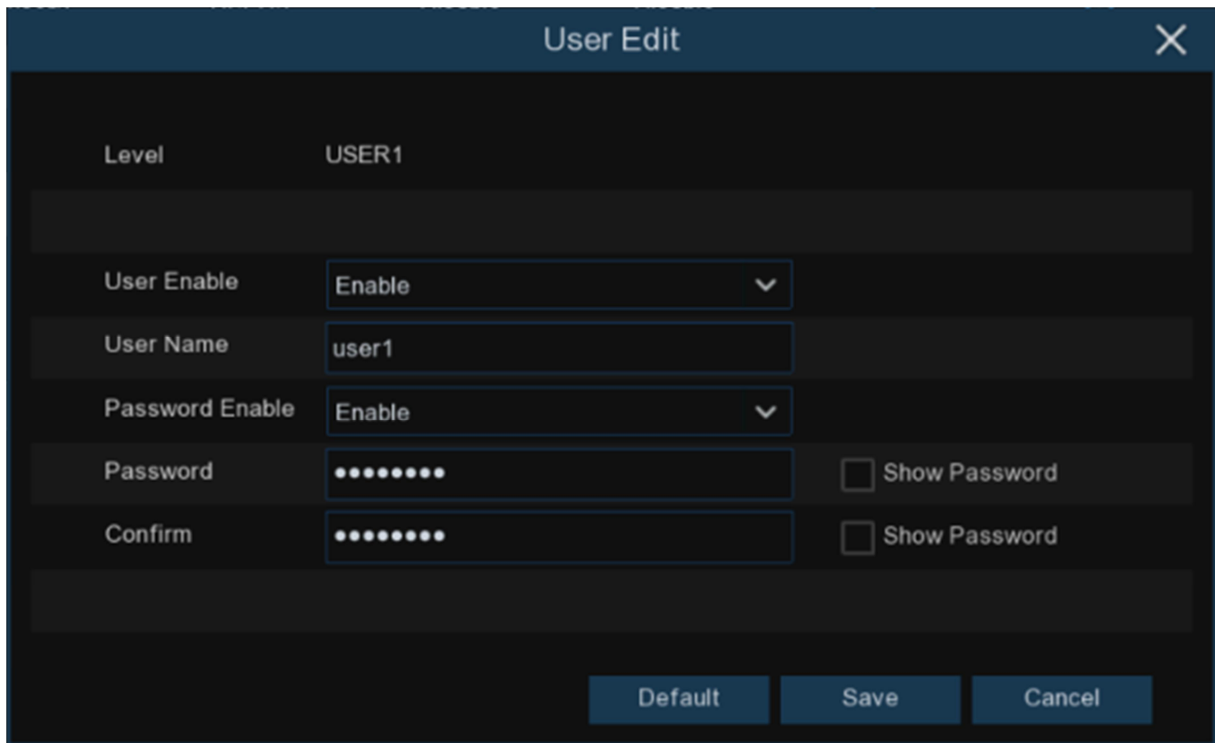
5.6.3.2 Add New Users

Multi-User

No.	User Name	Level	User Enable	Password Enable	User Edit	Permission
1	admin	ADMIN	Enable	Enable		
2	user1	USER1	Enable	Enable		
3	user2	USER2	Disable	Disable		
4	user3	USER3	Disable	Disable		
5	user4	USER4	Disable	Disable		
6	user5	USER5	Disable	Disable		
7	user6	USER6	Disable	Disable		

Default User:

1. Select one of the user accounts that is currently disabled, click the User Edit icon .



The screenshot shows a 'User Edit' dialog box with the following fields and controls:

- Level:** USER1
- User Enable:** Enable (dropdown menu)
- User Name:** user1 (text input)
- Password Enable:** Enable (dropdown menu)
- Password:** [masked] (text input) with Show Password
- Confirm:** [masked] (text input) with Show Password
- Buttons:** Default, Save, Cancel

2. Select **Enable** from the drop-down next to **User Enable**.
3. Click the field next to **User Name** to change the user name for the account.
4. Select **Enable** from the drop-down next to **Password Enable**.
5. Click the field next to **Password** to enter the desired password.
6. Click the field next to **Confirm** to reenter the password.
7. Click **Save**. You will be required to input your Admin password to authenticate.

5.6.3.3 Setting User Permissions

The administrator account is the only account that has full control of all system functions. You can enable or disable access to certain menus and functions of each user account.

No.	User Name	Level	User Enable	Password Enable	User Edit	Permission
1	admin	ADMIN	Enable	Enable		
2	user1	USER1	Enable	Enable		
3	user2	USER2	Disable	Disable		
4	user3	USER3	Disable	Disable		
5	user4	USER4	Disable	Disable		
6	user5	USER5	Disable	Disable		
7	user6	USER6	Disable	Disable		

Default User:

1. Click the edit icon under Permission tab.

User Permission ✕

User Name:

<input checked="" type="checkbox"/> Log Search	<input checked="" type="checkbox"/> Parameter	<input checked="" type="checkbox"/> Auto Reboot	<input checked="" type="checkbox"/> Manual Record
<input checked="" type="checkbox"/> Disk	<input checked="" type="checkbox"/> Remote Login	<input checked="" type="checkbox"/> SEQ Control	<input checked="" type="checkbox"/> Manual Capture

Backup

1 2 3 4

Live

1 2 3 4

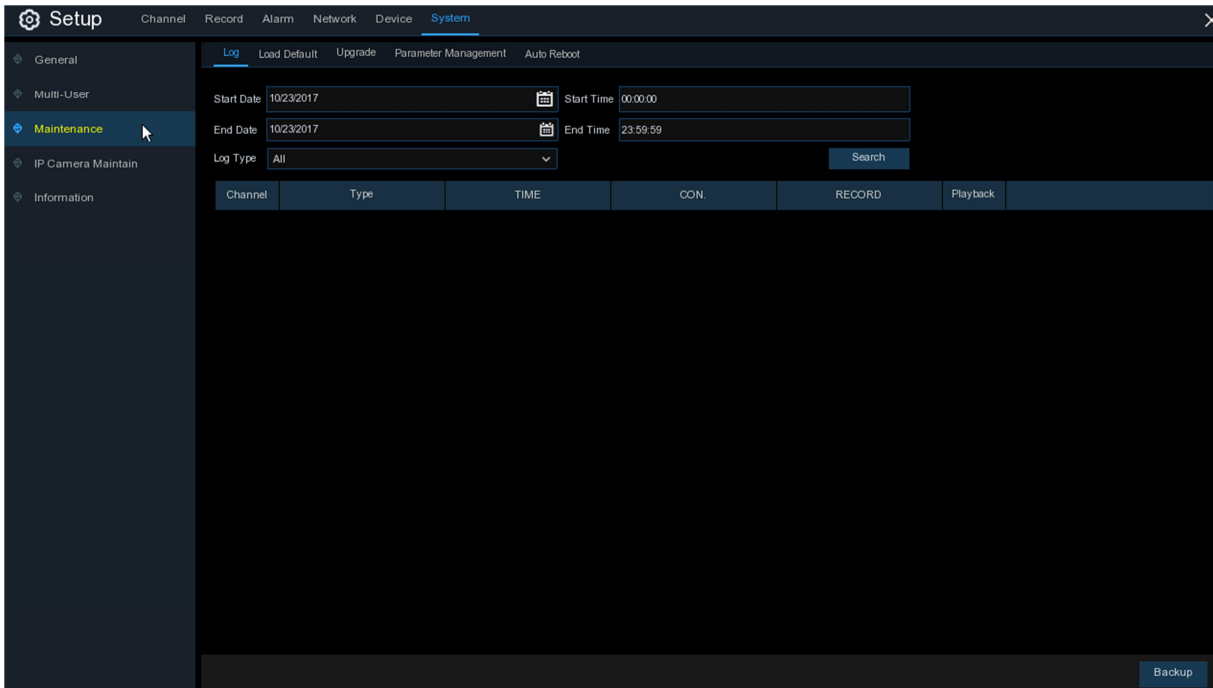
Playback

1 2 3 4

2. Check the boxes next to any system menus or capabilities you would like the user to access. Click **All** to check all boxes. Click **Clear** to check none of the boxes.
3. Click **Save** to save your modifications.

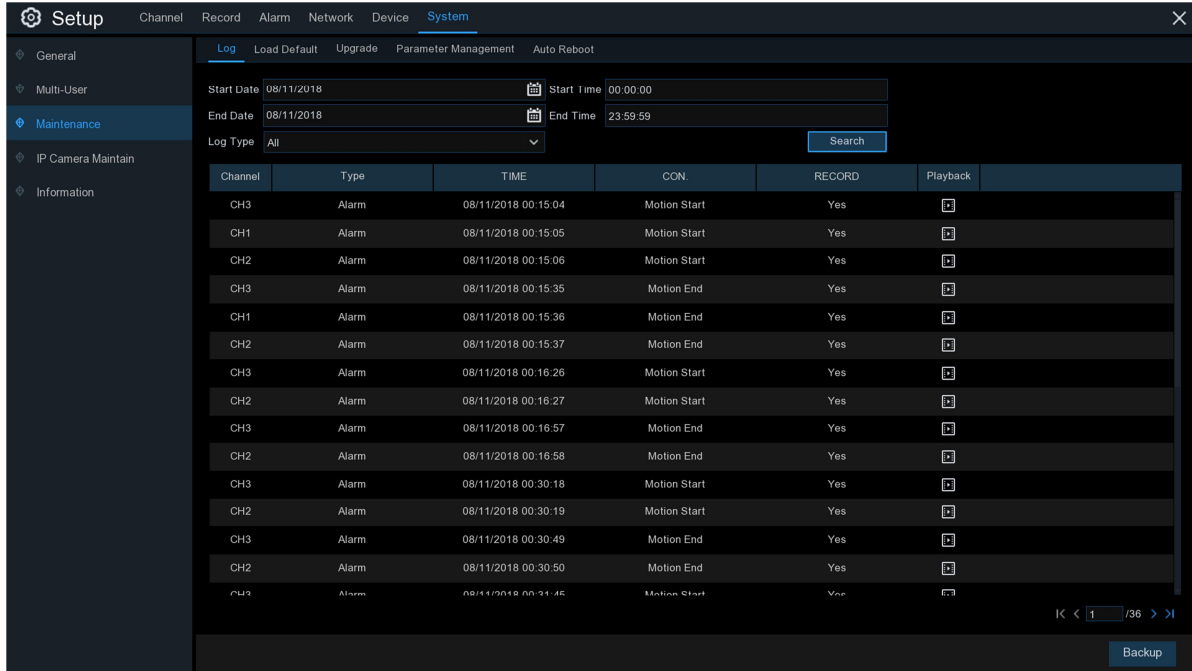
5.6.4 Maintenance

In this section, you will be able to search & view the system log, load default settings, upgrade the system, export & import system parameters and manager system auto reboot.



5.6.4.1 Log

The system log shows you important system events, such as motion alarms and system warnings. You can easily create a backup file of the system log for a set time period to a USB flash drive.

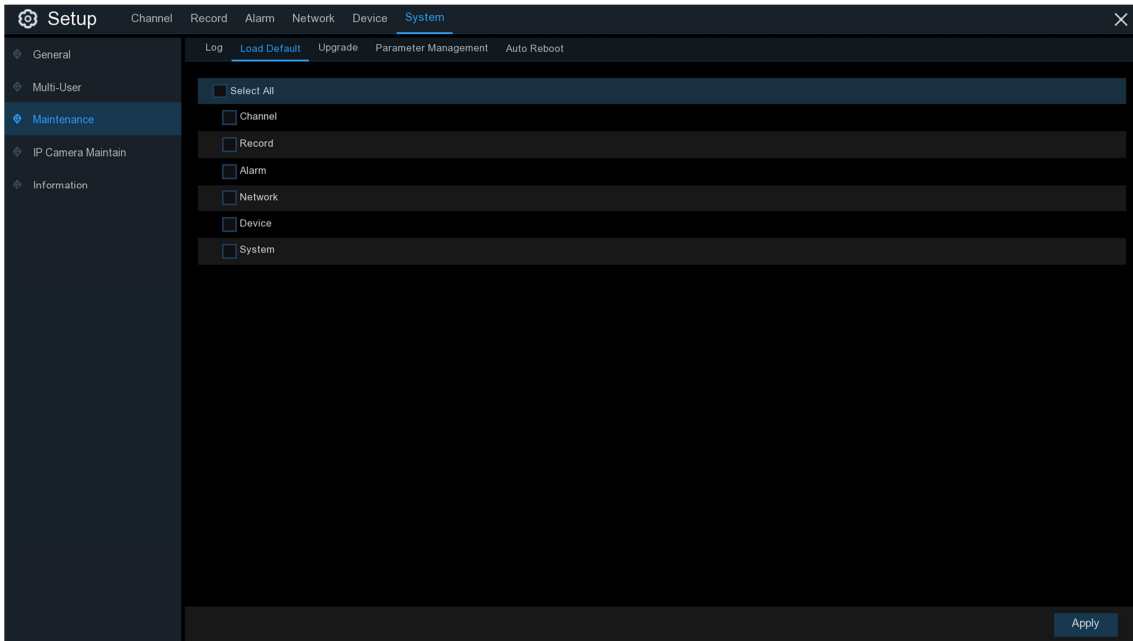


Log Searching and Backing Up:

1. Click the field next to **Start Date & Start Time** to choose the starting date & time for your search from the on-screen calendar.
2. Click the field next to **End Date & End Time** to choose the end date & time for your search from the on-screen calendar.
3. Select the type of events you would like to search for from the dropdown next to **Log Type**, or select **All** to see the entire system log for the selected time period.
4. Click **Search**.
5. Browse system log events from your search period:
 - o Video events can be played back instantly by clicking in the **Playback** column. Right-click to return to your search results.
 - o Use the **K < / > > I** buttons in the bottom-right corner of the menu to move between pages of system log events.
6. Click **Backup** to create a backup of the system log for your search period. Please make sure your flash drive has been connected to the WIRELESS NVR's USB port.
7. The backup drive menu appears. Navigate to the folder you want the backup file to be saved in, then click **OK** to begin.

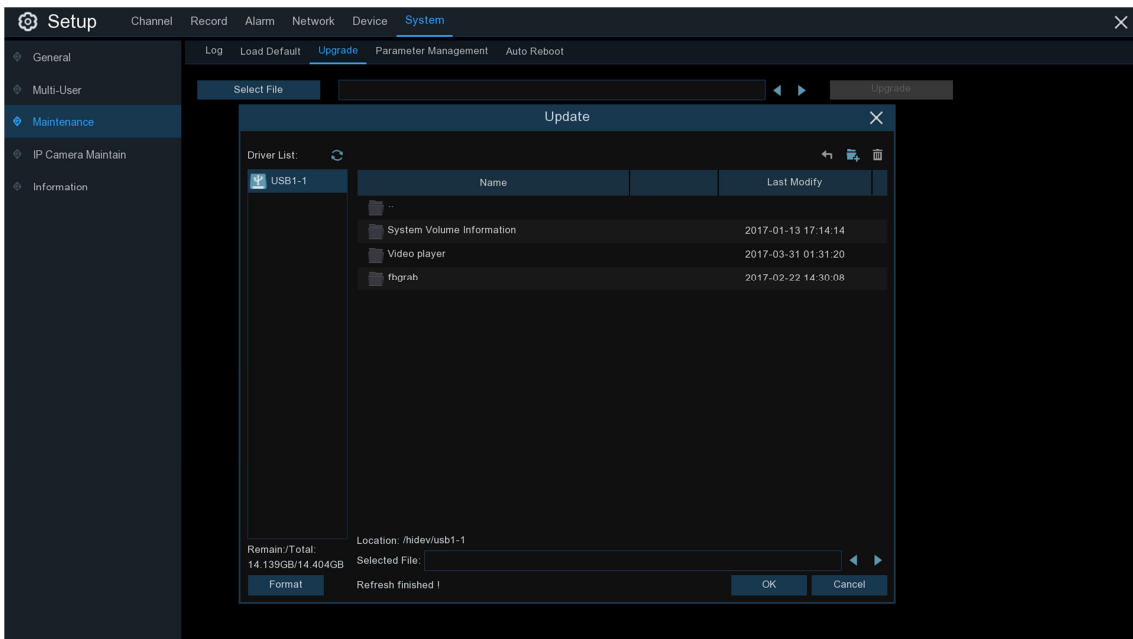
5.6.4.2 Load Default

Reset the WIRELESS NVR settings to its out-of-box state. You can choose to reset all settings at once, or just settings on specific menus. Restoring default settings will not delete recordings and snapshots saved to the hard drive.



Check the items you want restore, or check **Select All** to choose all items. Click **Apply** to load default settings of your chosen items.

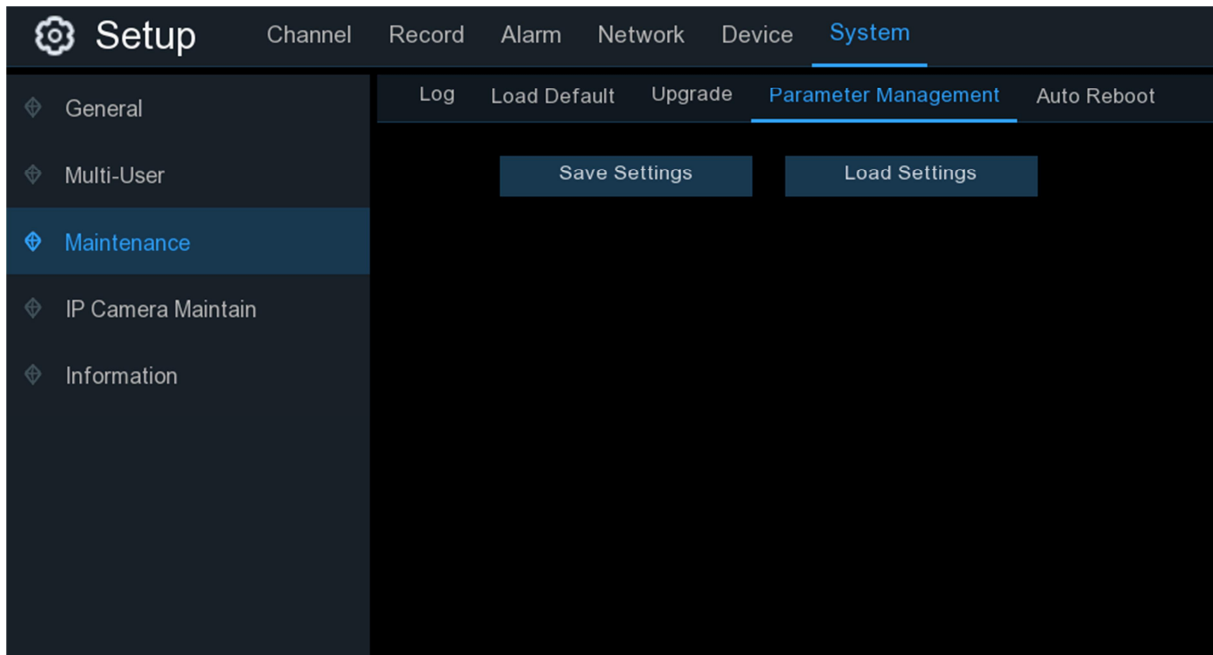
5.6.4.3 Upgrade



1. Copy the firmware file (.sw file) to your USB drive, and insert the USB flash drive into the WIRELESS NVR's USB port.
2. Click Select File button to choose the firmware file in your USB flash drive, then Click **OK**.
3. Click **Upgrade** button to start system upgrade. The system upgrade will last around 5-10 minutes, please do **NOT** power off the WIRELESS NVR or remove the USB from WIRELESS NVR during firmware upgrade.

5.6.4.4 Parameter Management

You can export the main menu settings you have configured to a USB flash drive, or import an exported setting file from USB flash drive to the WIRELESS NVR.

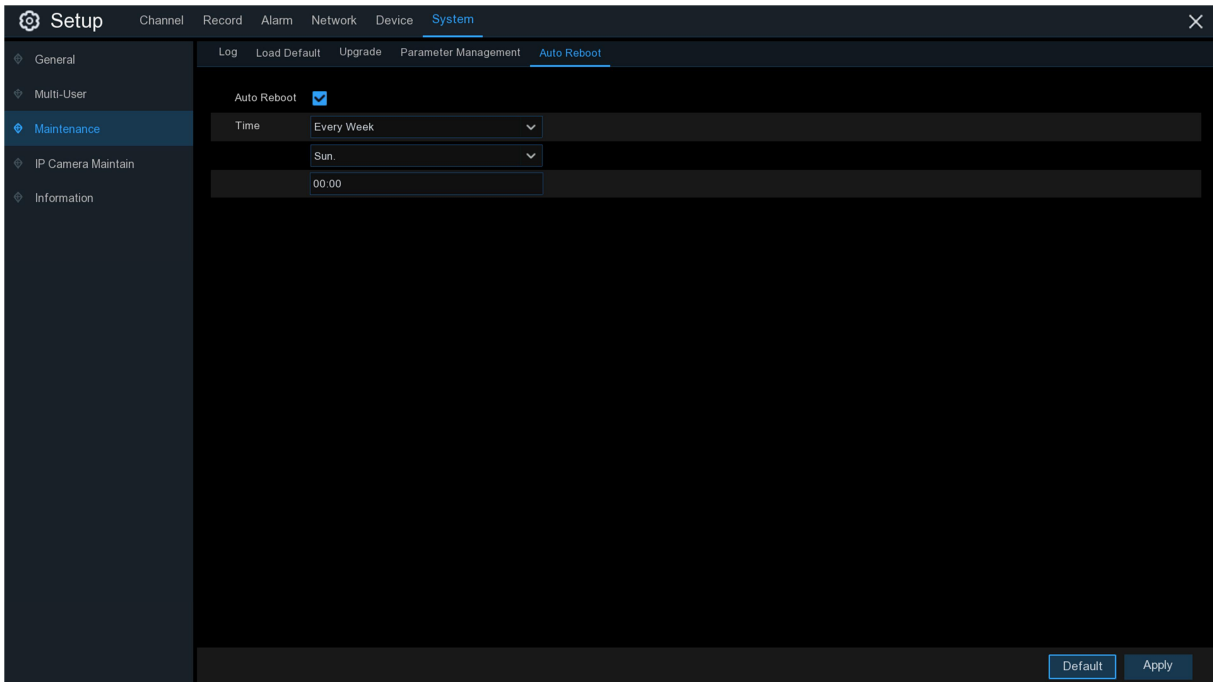


Save Settings: Click to save the WIRELESS NVR current system settings to the USB device. You will be required to input the Admin password to authenticate.

Load Settings: Once you have created a system settings export, you can import the settings on another NVR. Click **Load Settings** button to navigate to the system settings file you want to import from your USB flash driver. You will be required to input the Admin password to authenticate.

5.6.4.5 Auto Reboot

This menu allows the system to auto reboot the WIRELESS NVR regularly. It is recommended to leave this function enabled, as it maintains the operational integrity of your WIRELESS NVR.

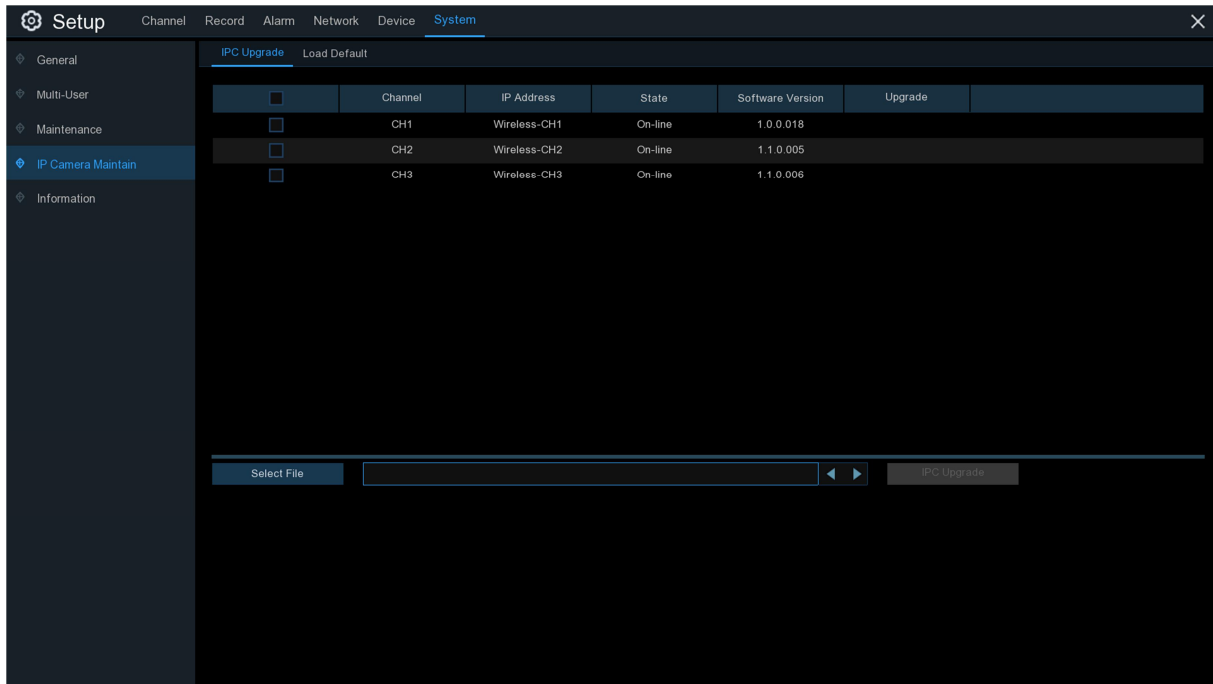


Auto Reboot: Check to enable.

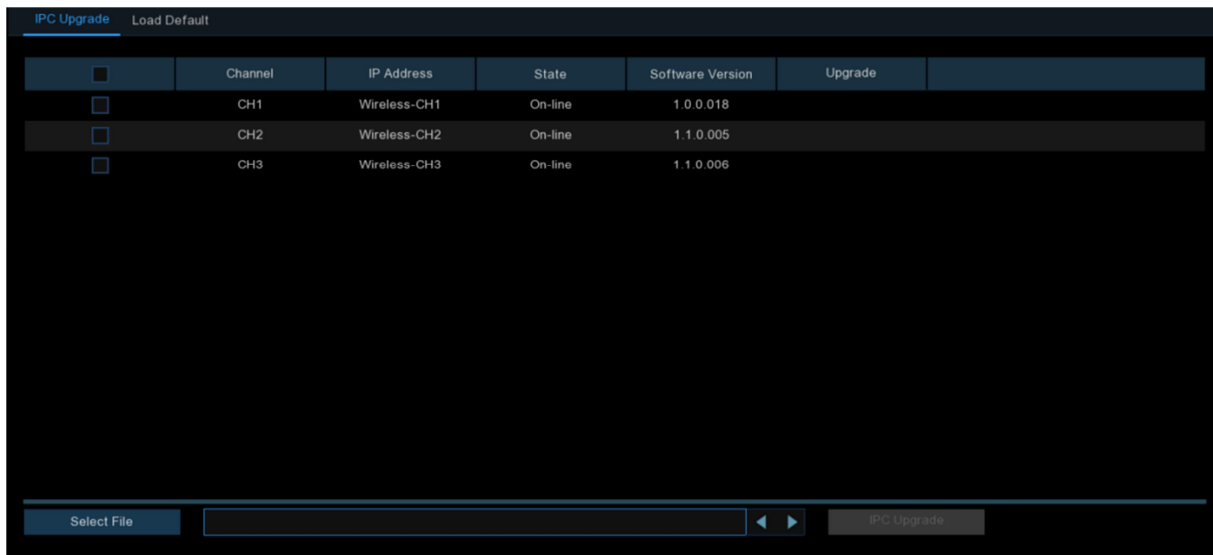
Time: You can set the WIRELESS NVR to reboot by day, week or month.

5.6.5 IP Camera Maintain

This menu allows you to upgrade the IP camera's firmware and restore default settings of IP camera.

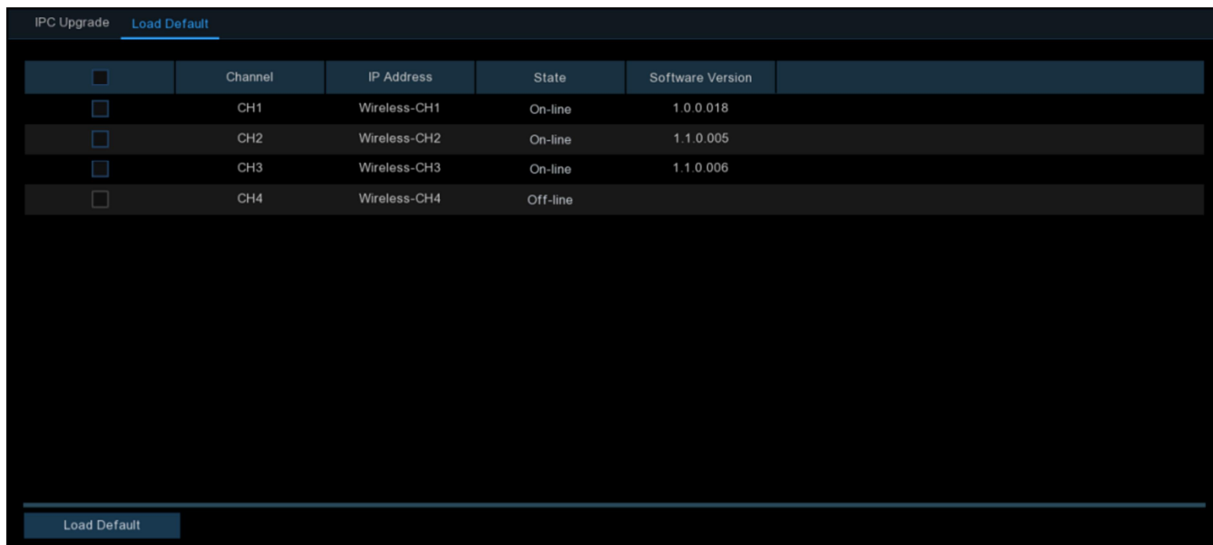


5.6.5.1 Upgrade IP Camera



1. Choose one of the IP cameras on which you want to upgrade firmware.
2. Click **Select File** select the update file from your USB flash drive, then click **OK**.
3. Click IPC Upgrade button to start upgrading. You will be required to input the Admin password to authenticate. Please do **NOT** power off the WIRELESS NVR and IP camera or remove the USB during the upgrading.

5.6.5.2 Load Default Settings for IP Camera



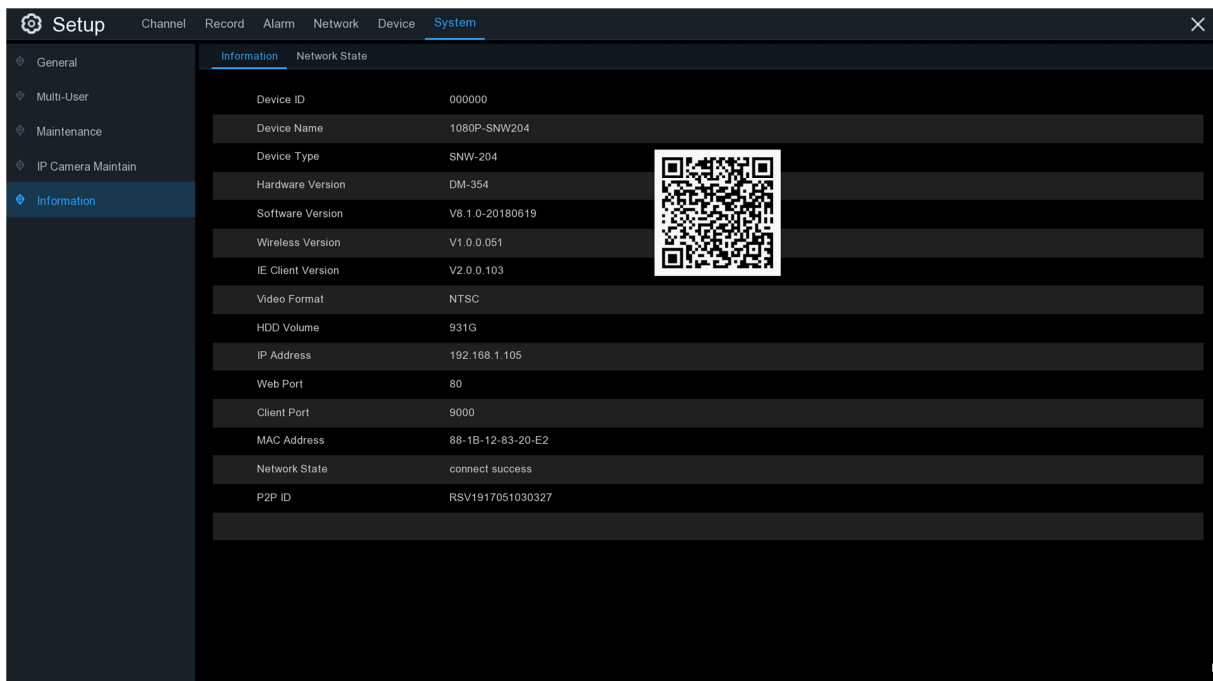
1. Choose the IP cameras you want to restore.
2. Click **Load Default** to restore settings. You will be required to input the Admin password to authenticate.

5.6.6 System Information

This menu allows you to view the system information, channel information, record information & network status.

5.6.6.1 Information

View system information such as device ID, device model name, IP address, MAC address, firmware version and more.



If your WIRELESS NVR supports P2P function, you will find the P2P ID & P2P QR code in the information page. You can scan this QR code with a mobile app to remotely view the WIRELESS NVR.

5.6.6.2 Network State

Information <u>Network State</u>	
Attribute	Value
WLAN	
IP Address	192.168.1.105
Subnet Mask	255.255.255.0
Gateway	192.168.1.1
MAC Address	88-1B-12-83-20-E2
DHCP	Enable
DNS1	221.4.221.198
DNS2	8.8.8.8
PPPoE	Disable
Port	
Web Port	80
Client Port	9000
RTSP Port	554
UPNP	Disable

View network information.

Chapter 6 Search, Playback & Backup

The Search function gives you the ability to search for and play previously recorded videos as well as snapshots that are stored on your WIRELESS NVR's hard drive. You have the choice of playing video that matches your recording schedule, manual recordings or motion events only. The Backup function gives you the ability to save important events (both video and snapshots) to a USB flash drive.

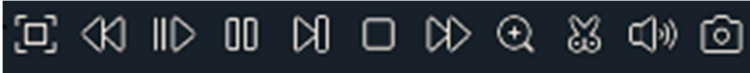
6.1 Using Search Function

Click  **Search** button in the Start Menu to enter search section.



- 1. Search Options:** the system provides various search & playback methods: General, Events, Sub-periods & Pictures
- 2. Search Date:** search by a date to play back.
- 3. Search Type:** the system provides different search types to narrow your search.
- 4. Channel Selection:** to choose the channels you want to search & play.

5. Video Playback Controls: to control the video playback.



Enlarge the video playback to full screen



Rewind, x2, x4, x8 and x16



Slow Play, 1/2, 1/4 and 1/8, 1/16 speed



Play



Pause



Play frame by frame. Click once to play a frame of the video



Stop



Fast Forward, x2, x4, x8 and x16



Digital Zoom: Click to zoom in then click-and-drag on a camera image during playback to zoom in on the selected area. Right-click to return to regular playback.



Video Clip. Quickly save a section of video to a USB flash drive. View more on [6.1.1.1 Video Clip Backup](#)




Save Video Clip.



Volume Control: scroll the slider bar to increase or decrease volume.



Snapshots: to capture a snapshot image to your USB flash drive. If the video playback is in split-screen view, move the mouse cursor to the channel you want to capture, and then click the  icon to save the snapshot.

6. Timeline: Continuous recordings are shown with colored bars to represent different types of recording (legend shown in the bottom-right corner of the display). Use the timeframe options



to view a smaller or larger time period.

7. Playback Status: display the video play status.

8. Different types of recording shown in different colors:



Continuous Recording in **Green**;

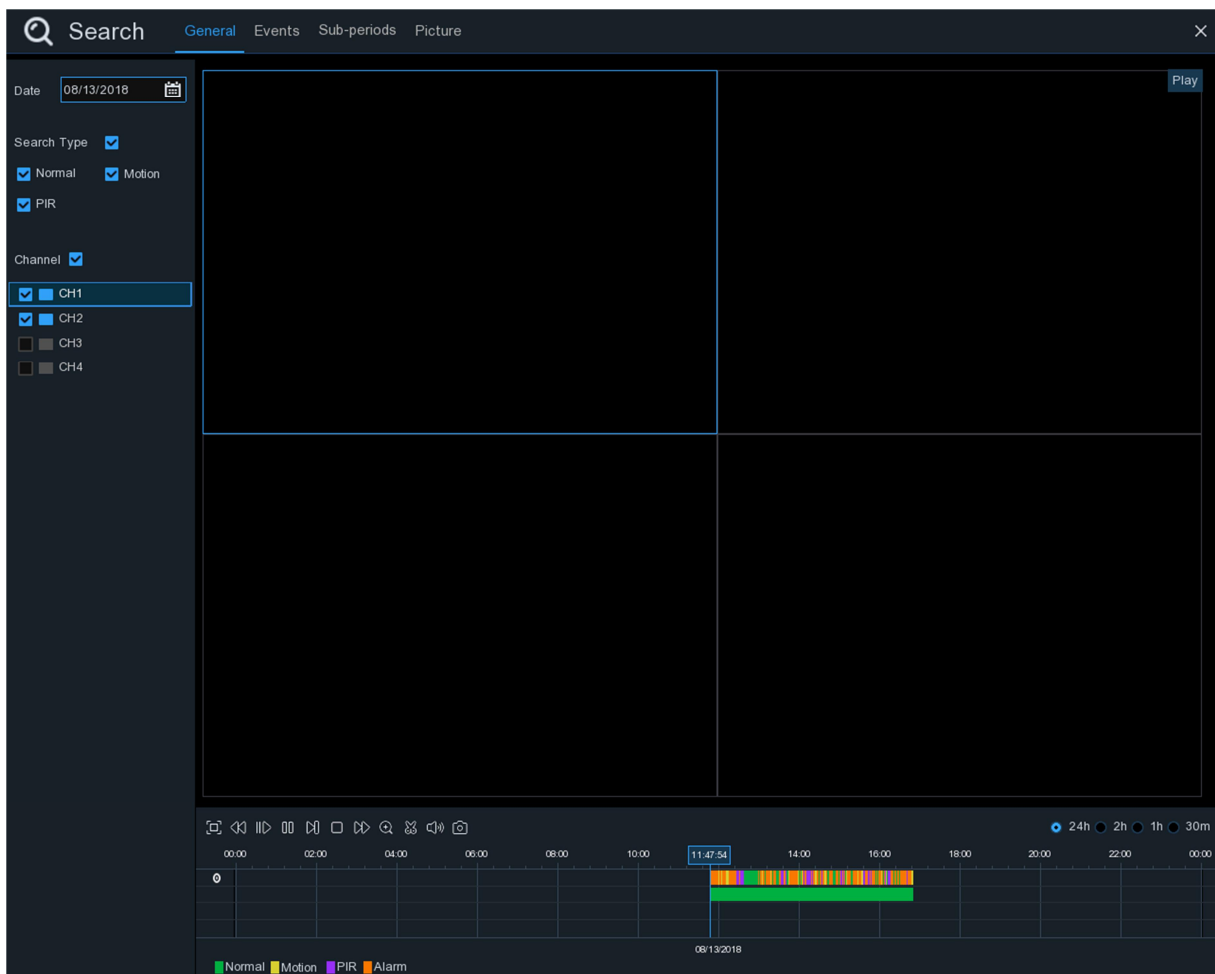
Motion Recording in **Yellow**;

PIR Recording in **Purple**;

Alarm Recording in **Orange**


6.1.1 Search & Play Video in General

This menu gives an option to search & play recordings for a selected date.







1. Select a date to search for video recordings from the calendar.
2. Choose a search type.
3. Check channels you would like to search, or check **Channel** to search all connected channels.
4. The search results will display on the timeline from 00:00 to 24:00.
5. Click **▶** button to start playback.
6. Control the playback with buttons on **Video Playback Controls**.
7. Use the timeframe options (**24h** **2h** **1h** **30m**) to view a smaller or larger time period.

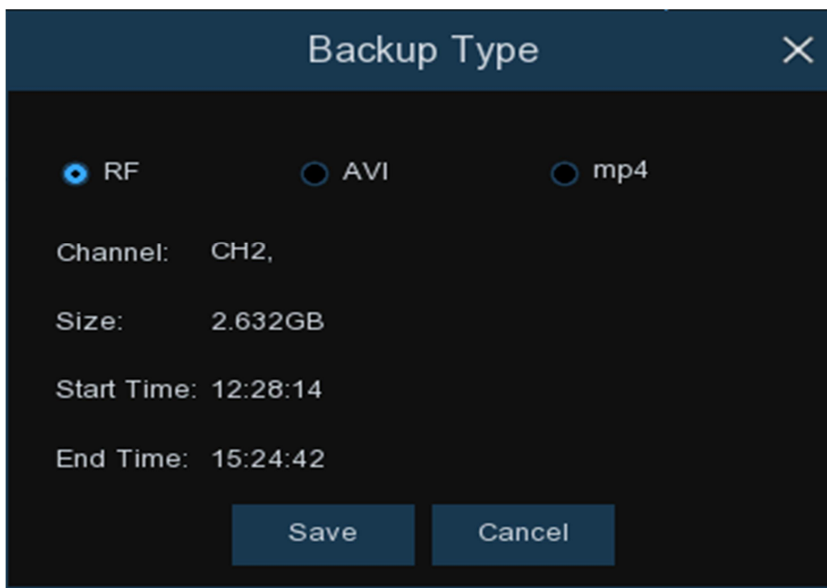
8. If you want to quickly save a section of video during playing back to a USB flash drive, use the

 **Video Clip** backup function.

6.1.1.1 Video Clip Backup



1. Insert your USB flash drive to the WIRELESS NVR.
2. Start a video recording playback.
3. Click  icon.
4. Check the channel(s) you want to make a video clip backup of.
5. Move the mouse cursor to the timeline where you want to start the video clip.
6. Press and hold the left button of your mouse, and drag the drag the cursor to the timeline where you want to end the video clip.
7. The  icon has been changed to  icon, click  to save the video clip.
8. Select a file type for your backup files, click **Save** button to save the video clips. Please make sure your USB drive has enough space to save the video clips.



9. Next, The backup drive menu appears. Navigate to the folder you want to save the backup files in.
10. Click **OK** to begin. The progress bar at the bottom of the window shows you the progress of the backup.

