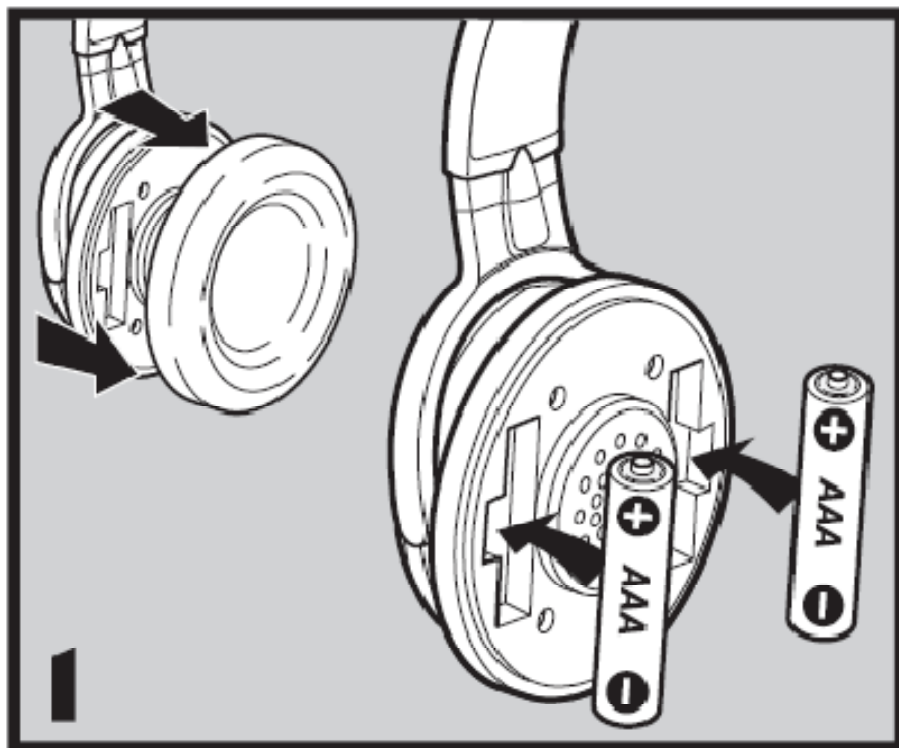
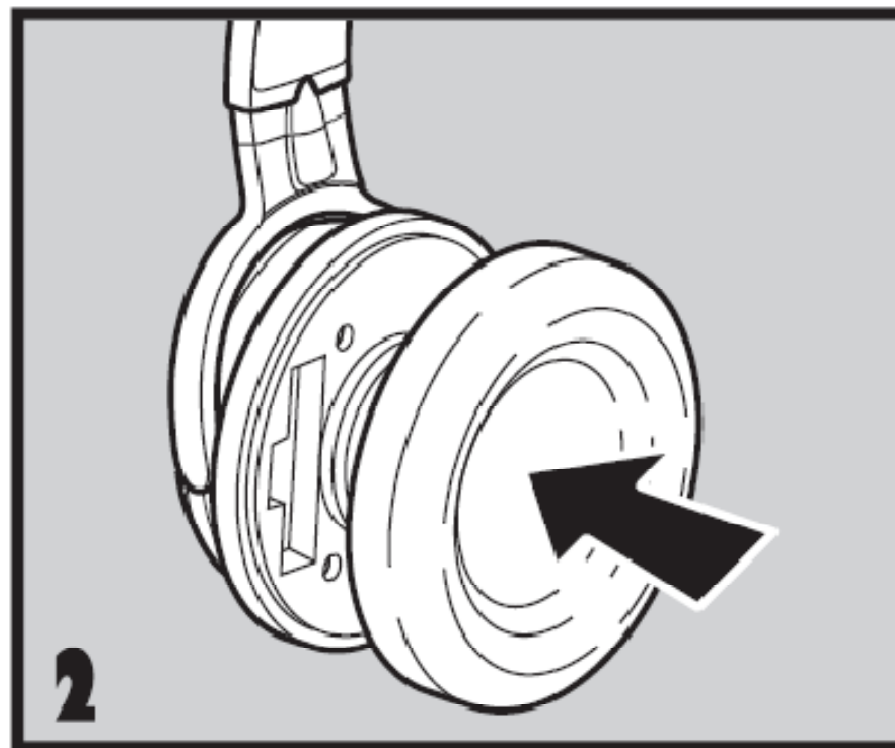


HP3090
User Manual
(Preliminary)

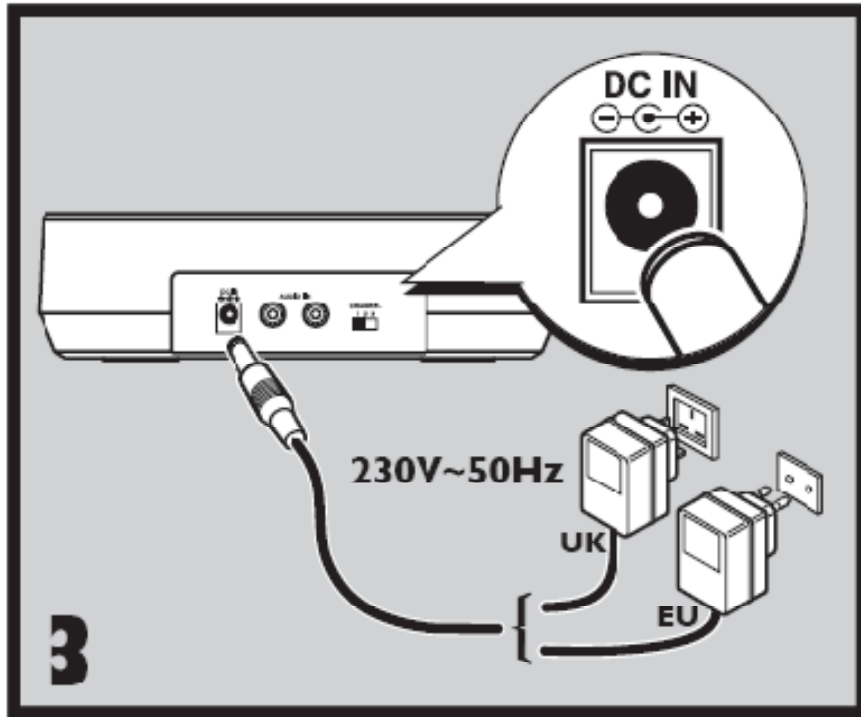
FCC ID: 2AS8H-HP3090



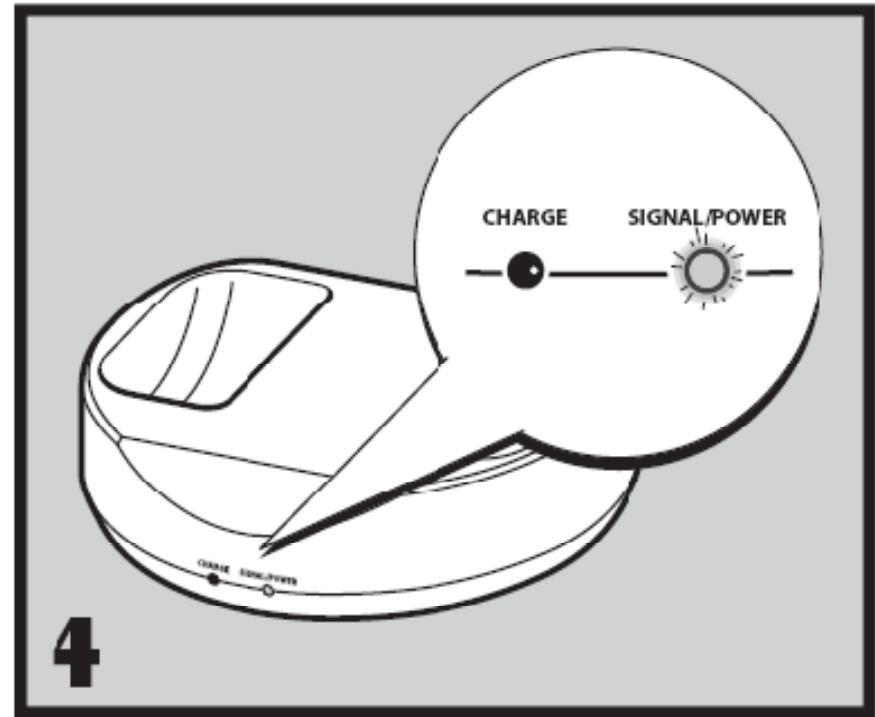
- (GB)** Open the rechargeable battery compartment on the right side (**R**) of headphone receiver, and insert two **AAA** type rechargeable batteries as enclosed in the packaging of the product, making sure their positive and negative (+ and -) poles are correctly aligned.



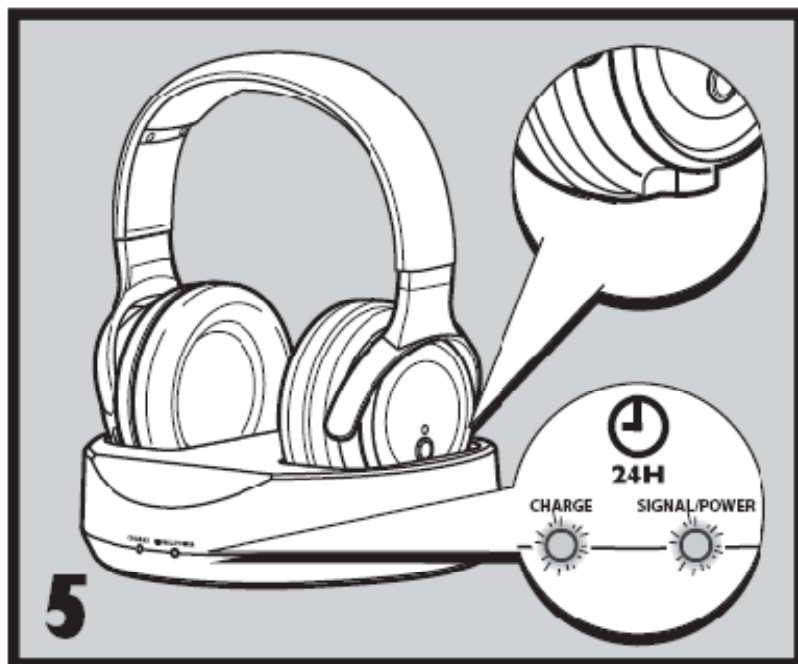
- (GB)** Close the rechargeable battery compartment.



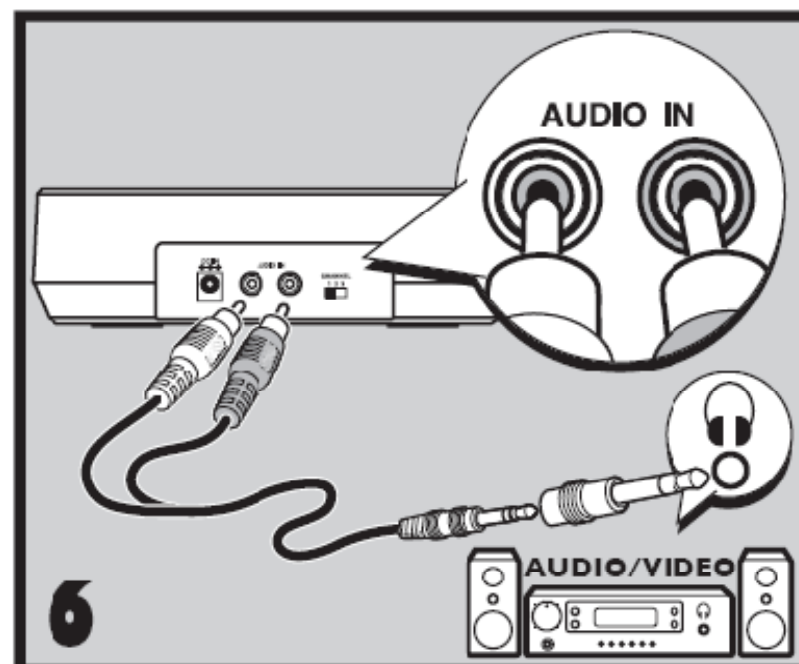
- GB** Connect the plug on the **AC/DC** mains adapter cable to the **DC IN** socket at the back of the cradle then plug the adapter into a 230 V~50Hz mains wall outlet.



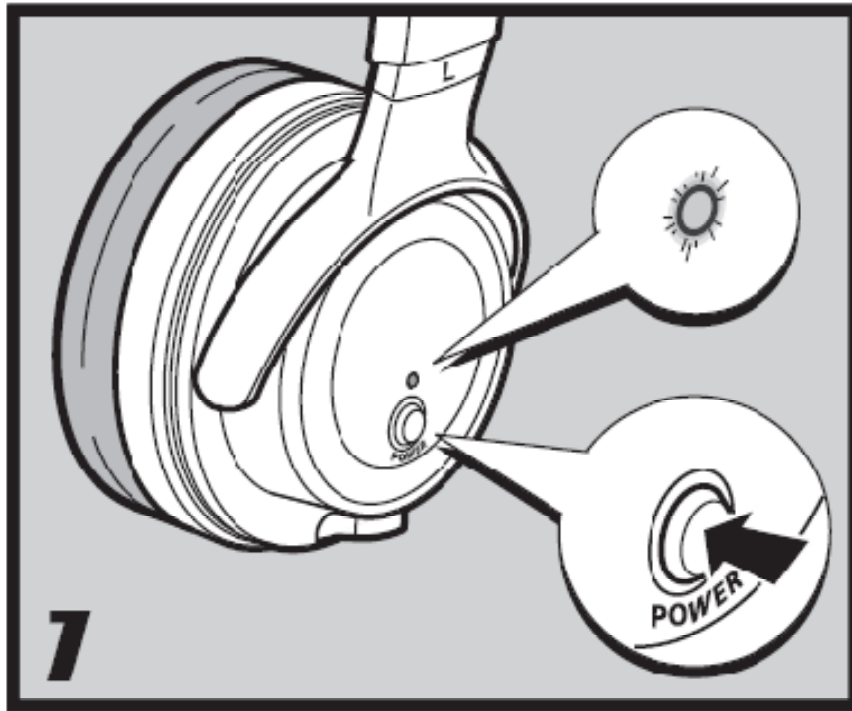
- GB** The **Green** running light comes on when the transmitter is connected to the audio source and the audio source is turned on.



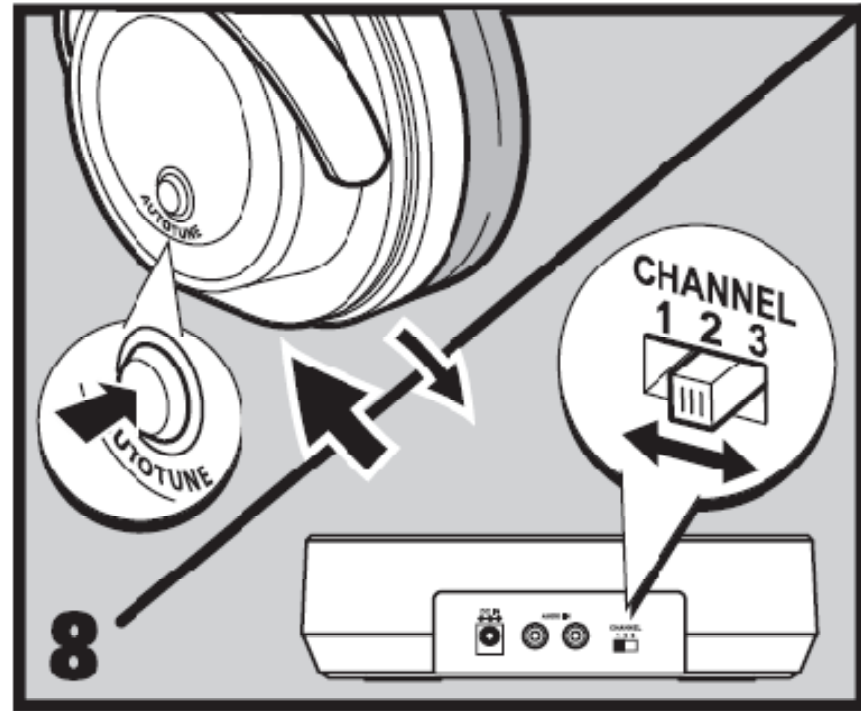
- GB** Sit the headphones in the cradle, making sure the charging contacts on the headphone mate with the cradle contacts (headphones fully pushed towards the rear). Check that the **Red** charging light on the cradle comes on. Leave the headphones to charge for 24 hours. Second and subsequent charge take about 10 hours.



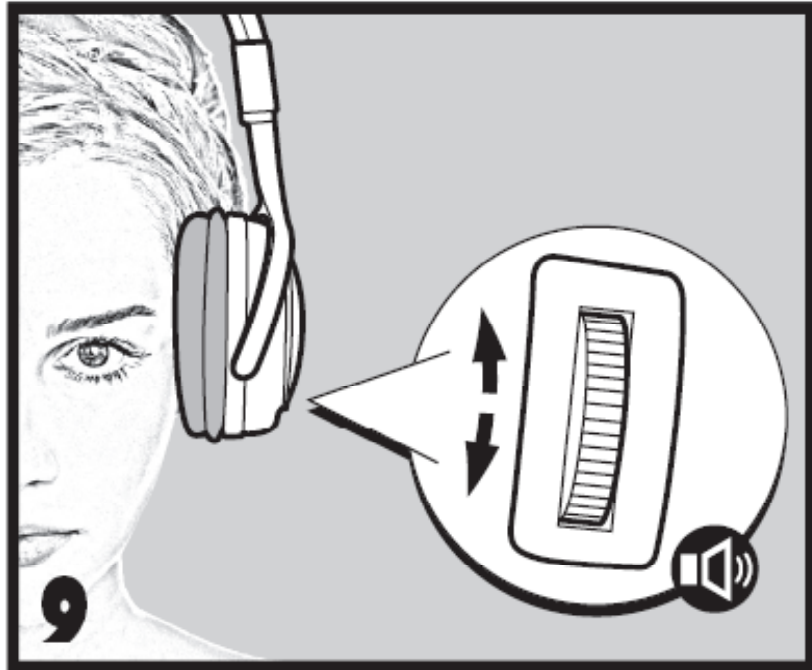
- GB** Connect the **L** and **R** audio inputs on the cradle to the headphone socket of an audio appliance (amplifier or other device). Use a 6.35mm/3.5mm adapter jack if necessary. Switch on the audio appliance and adjust its volume to approximately one quarter of its maximum setting.



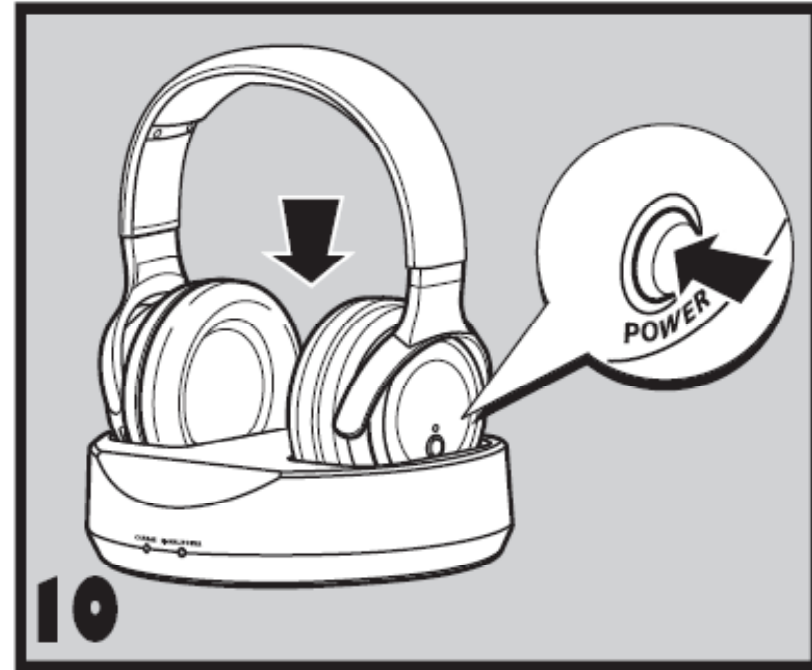
7 **GB** Switch on the headphones and make sure the **green** running light comes on; this confirms that the rechargeable batteries contain power. Turn the volume adjustment thumbwheel to the half-way position.



8 **GB** Adjust headphone reception by pressing the fine tuning button once. If the sound is poor, change to a different channel on the cradle and press the fine tuning button once more.



- GB** Turn the volume down on the headphones before putting them on your head; once you are wearing them, adjust the volume to suit.



- GB** Sit the headphones firmly in the cradle, pushing them back so the charging contacts on the headphone mate with the cradle contacts.

FCC Warning Statement Changes or modifications not expressly approved by the party responsible for compliance could void the user's authority to operate the equipment. This equipment has been tested and found to comply with the limits for a Class B digital device, pursuant to Part 15 of the FCC Rules. These limits are designed to provide reasonable protection against harmful interference in a residential installation. This equipment generates uses and can radiate radio frequency energy and, if not installed and used in accordance with the instructions, may cause harmful interference to radio communications. However, there is no guarantee that interference will not occur in a particular installation. If this equipment does cause harmful interference to radio or television reception, which can be determined by turning the equipment off and on, the user is encouraged to try to correct the interference by one or more of the following measures:

- Reorient or relocate the receiving antenna.
- Increase the separation between the equipment and receiver.
- Connect the equipment into an outlet on a circuit different from that to which the receiver is connected.
- Consult the dealer or an experienced radio/TV technician for help.

This device complies with part 15 of the FCC Rules. Operation is subject to the following two conditions: (1) This device may not cause harmful interference, and (2) this device must accept any interference received, including interference that may cause undesired operation.