

M/N: LW-001K

2.4GHz Wireless Keyboard and Mouse Combo

User Manual

Package Contents

- 1 x Wireless Keyboard
- 1 x Wireless Mouse
- 1 x 2.4G USB Receiver
- 1 x User Manual
- 1 x Warranty Card

Specification of Keyboard

Dimensions	438.5x129x18.61mm
Operating Range	< 10 meters
Power Source	2 x AAA Batteries (Not included)
Uninterrupted Work Time	90 days
Keys Life	3 million clicks

Specification of Mouse

Dimensions	107.5x60x27.5mm
Operating Range	< 10 meters
Power Source	2 x AAA Batteries (Not included)
Uninterrupted Work Time	160 days
Button Life	3 million clicks
DPI	1000-1200-1600

Product overview



- ① **Fn Lock:** Press “” to activate LegalMode. When Fn lock is activated, press (F1-F12) to activate the Legal functions.
- ② **Caps Lock Indicator:** The caps lock indicator will be green when caps lock is activated.
- ③ **Pairing Indicator:** Pairing mode.
- ④ **Power Indicator:** The power indicator will be green when the keyboard has been turned on successfully.
- ⑤ **Power Switch:** Push the switch to the right to turn on and to the left to turn off.
- ⑥ **Storage Slot:** Open slot and insert 2 x AAA batteries (not included) . 2.4G USB receiver is stored in this slot.

Keys and Functions

ICONS	LEGAL FUNCTIONS	ICONS	LEGAL FUNCTIONS
	Turn legal functions on and off		Single spaced line spacing
	Turn small caps on and off		Double spaced line spacing
	Start find window		Inserts em dash
Shift + Q	Close find window	Shift + EM	Inserts en dash
	Add bullet		Inserts the word plaintiff
	Add footnote		Inserts the word defendant
Shift + 	Toggle back to text from footnote or to prior cursor position		Inserts the word appellant
	Turn Track Changes On/Off		Inserts the word respondent
	Add Comment	Shift + Any text key	Capitalize inserted word
Shift + 	Toggle back to text from comment box or to prior cursor position		

Legal Mouse

Installation

1. Open the battery cover(underside of mouse) and remove the USB Receiver Dongle from the battery bay.
2. Install the 2 AAA batteries (supplied) and replace the bay cover.
3. Switch the mouse ON (switch top/right on underside of mouse).
4. Plug the Receiver Dongle into an available USB port on your computer.

Troubleshooting

Your mouse is designed to trouble-free wireless mouse operation. If your mouse has stopped functioning, either the batteries have become depleted or their installation is incorrect. To restore operation, follow these simple steps:

1. Turn the mouse OFF (switch top/right on underside of mouse).
2. Remove the USB Receiver Dongle from your computer.
3. Open the battery cover and confirm that the batteries are charged and installed properly.
4. Replace the cover, switch the mouse ON, and reinstall your USB Receiver Dongle.

Re-Pairing the Mouse and Receiver

Your Mouse comes pre-paired with its USB Receiver Dongle. Should re-pairing become necessary, follow these steps:

1. Switch the Mouse ON and plug the Receiver Dongle into your computer.
2. Within 30 seconds, press and hold the mouse *Right Click* button and *Scroll Wheel* simultaneously. The mouse LED will glow red, indicating successful pairing and your mouse should be operating normally.

Package Contents:

- Wireless Mouse
- USB Receiver Dongle (stored in mouse battery bay)
- 2 AAA Batteries
- User Guide

Technical Specifications

- 2.4GHz RF wireless computer mouse
- Wireless range up to 30' (10 meters)
- Mouse resolution: 1200dpi
- Windows® XP®, Vista®, 7, 8 & 10 compatible
- Dimensions: 3.93" (L)x2.36" (W)x1.42" (H)
- Weight: 2 oz.

FCC Statement

This equipment has been tested and found to comply with the limits for a Class B digital device, pursuant to part 15 of the FCC Rules. These limits are designed to provide reasonable protection against harmful interference in a residential installation.

This equipment generates, uses and can radiate radio frequency energy and, if not installed and used in accordance with the instructions, may cause harmful interference to radio communications. However, there is no guarantee that interference will not occur in a particular installation. If this equipment does cause harmful interference to radio or television reception, which can be determined by turning the equipment off and on, the user is encouraged to try to correct the interference by one or more of the following measures:

- Reorient or relocate the receiving antenna
- Increase separation between the equipment and receiver
- Consult the dealer or an experienced radio/TV technician for help

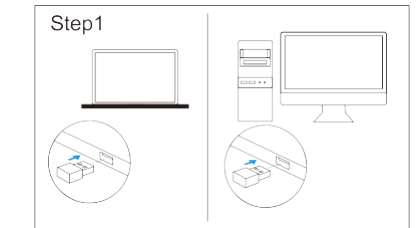
Specifications subject to change.

www.Legalboards.myshopify.com

Pairing Steps

Step 1. Slide the power switch to right to turn on the keyboard, then plug 2.4G USB receiver into an USB port of the computer.

(Note: If connection failure, press “Esc + Q” together to pair.)



Step 2. Insert 2 x AAA batteries (not included) into the mouse.

(Note: If failure, press the Wheel and Right-button together for 3

Power Saving Mode

The keyboard and mouse will enter sleep mode after being idle for 3 seconds. Press any key and simply move the mouse in any direction to wake up.

Power Steps

If there is no light displayed at all, the battery is completely drained. For this situation, it is time to replace the battery.

Troubleshooting

If you are unable to connect the device to your tablet, please try the following:

1. Make sure the device be switched on.
2. Make sure the 2.4G USB receiver be inserted into a USB port of tablet.
3. Make sure that there's enough power in the device.
4. Make sure the device are within 10m.

Warning: Changes or modifications not expressly approved by the party responsible for compliance could void the user's authority to operate the equipments.

The device has evaluated to meet general RF exposure requirements. The device can be used in portable exposure conditions without restriction.