

WIFI camera

Operation Manual

CLOUD-BASED STORAGE SERVICE
30 DAYS FREE EXPERIENCE

HIGHER-END AND SAFER STORAGE



Dear users, you are welcome to choose this product. Before using the product, please read the instruction manual carefully and keep it for later reference

1、 Main Function Description



Cloud Storage



High Definition Recording



Remote Switch



Audible Alarm



Schedule Recording



IOS supported



Android Supported



Two-way Audio



Remote Monitor



Wireless Wifi



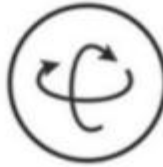
TF Card Storage



Infrared Night Vision



Video Streaming



Pan & Tilt



Motion Detection

2、 How To Download Mobile APP

- Search and download “YCC365 Plus” in Apple Store or Android app store.
- Scan the QR code as below



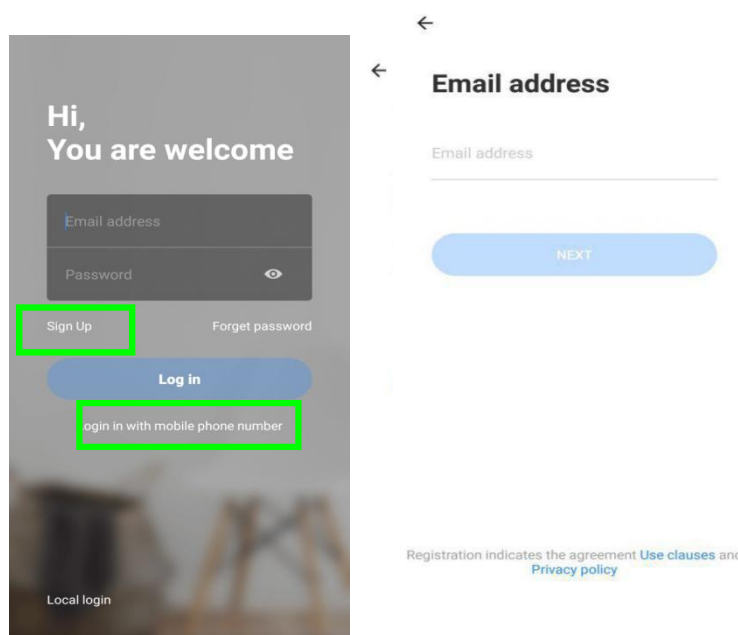
3、 How To Operate The Mobile APP

3.1 Register an account

When you use this app at the first time, you need to use your email to register an account, click “Sign Up” and set a password according this procedure.

*If you forget your password, you can reset your password, just click "Forgot password" on the login page.

*Password should be at least 6 characters and not longer than 30 characters. It should be a combination of letters and numbers.



Tips: the current version only supports mobile phone number registration in Vietnam. Please use email to register in other areas

3.2 Add camera

Note: the camera only supports 2.4G WIFI, before adding devices, make sure your router is 2.4G WIFI, and your phone is connected to 2.4G WIFI.

3.2.1、 Scan QR code to add

● Please make your phone connect to the Wi-Fi, and then click “Deviceaddingbyscanningthe code”, reset the camera, after hearing the voice “PleaseconfigurecamerabyscanningcodeorAP hotspot”, please click the “Connect to

the network”.

- Select your own Wi-Fi and login with your password.
 - Align the two-dimensional code displayed on the phone with the camera lens, maintain a distance of 4-8 inches and keep balance.
 - Click “I heard the beep voice” after hearing the beep, a few seconds later, you will hear the voice “Internet connected welcome to use cloud camera”.
-

4

5

6

3.2.2 Addition by connecting to network cable (Onlysupport Lan port device)

- Please connect Ethernet cable between camera and Wi-Fi router.
- After your phone connect to the Wi-Fi, Click “**Add device**” and “**Addition by connecting to network cable**”
- Please scan the QR code on the device and wait for the network connection to succeed.

3.2.3 Addition of AP hotspot

- After your phone connect to a Wi-Fi ,pleaseclick “Add device” and “Addition of AP hotspot”,, after hearing the voice “PleaseconfigurecamerabyscanningcodeorAP hotspot”, please click the “Connect to the network”.if you do not hear the voice,please reset you camera.
- Follow the wizard make your phone connect to “CLOUDCAM_XXXX” network and Return to YCC365 plus app.
- Click “Next ” and Select your own Wi-Fi and login with your password.
- Waitfor the Wi-Fi connection to succeed then Hear the voice “Internet connected welcome to use cloud camera”

3.3 AP Direct mode (special)

4

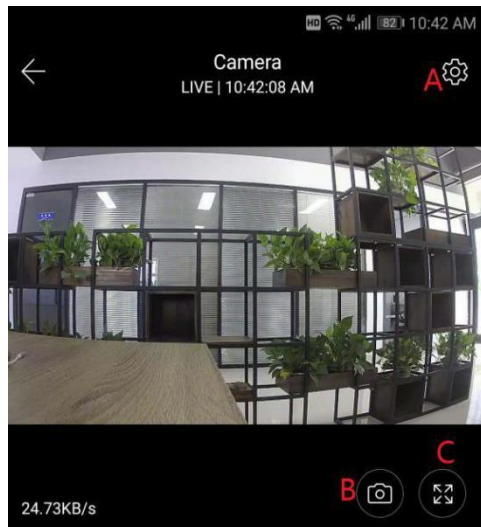
5

- Power up the camera and hear the voice "Please configure camera by scanning code or AP hotspot" (if you don't hear the voice, reset the camera)
- Open the YCC365 plus app to enter the login interface, click "Local login" .

- Make your phone connect to "CLOUDCAM_XXXX" network "
 - Click "AP networked device preview" and Click "Next" .
 - Scanning the device in the Wi-Fi network , then click the device .
 - Enter user name: **admin** password: **12345**, click "CONFIRM", then you can preview the screen.
-

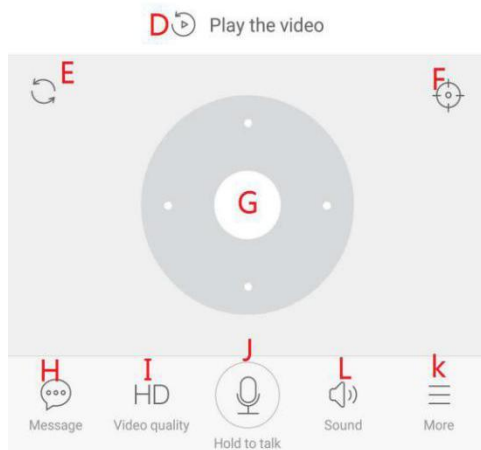
4 Function introduction

Real-time preview interface



A:Parameter Menu
C:Full Screen
E:pan-tilt reset
G:Pan&Tilt
I:Video quality
L:Sound
K:More

B:Snapshot
D:Video playback
F:Preset
H:Message
J:Hold to talk



Control white light
View cloud albums
Video to the phone.

4.1 PTZ/ Preset

● PTZ

By sliding steering wheel or sliding the screen on the live preview can control the camera's rotation .

● Preset

- 1、 Click the preset icon to enter the preset management interface.
- 2、 Add the preset: several presets can be added.
- 3、 Delete the preset: click the edit icon to delete the preset that has been added.

4.1.1 Add the preset

4.1.2 Delete the preset

4.2 Video playback

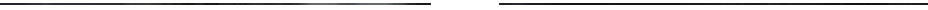
Gentle hint : video playback by default is cloud recording , if you want to playback the video on the TF card , you can switch “play videos from” to “SD card”.

- Cloud video has color discrimination, dark blue indicates the alarm recording and light blue indicates non-alarm recording. TF card video color uniform light blue.
- Click the date icon to playback the video of the selected date.
- Click “ $\times 1.0$ ” icon can adjust the cloud video playback speed, but TF card playback does not support.

4.3 Video clip

Gentle hint: Only the cameras with cloud service package have this feature.

Drag the playback cursor and click the clip icon, select start time and click “save to the cloud album”, enter the video name and click “save”.



4.4 Download cloud video / share cloud video

Click the cloud album icon and click the video clip, click "Download" to save the video to your phone or click "Share" to share your Video on Facebook and YouTube.



4.5 cloud video playback

Click “Message” to view the alarm video.

5 Preferences

Click “” in the preview screen, check the parameter menu

Rename the device name

Add closure plan

Shared with other users

5.1 Cloud Storage service

We offer 30-day-long cloud service, everyone can enjoy the cloud storage service for free, after that you can choose to pay for the service with a low cost.

A、 Select “Cloud service” and check Subscription packages

B、 There are three kinds of subscription packages for you, you can choose to pay for this service by monthly or yearly.

C、 We support PayPal payment system, click “Go to PayPal now” and then finish the payment (please install PayPal app in advance)

5.2 Set TF card recording Mode

Insert the TF card into the card slot and power on the camera.

TF card requirements: 1、 Memory space 8-128G 2、 C10 TF card 3、 use after formatting.

4、 Recommend Kingston/SanDisk/Samsung

Click “Device storage” to check it

Click “Memory card recording mode” to select the video mode of TF card.

5.3 Notification settings

Turn on the sound switch,detect abnormal sound triggering message push

Turn on the motion switch,detect the motion triggering message push

Push notification setting

Gentle hint: **Only the cameras with cloud service package support mail delivery.**

5.4 Other functions settings

Device Microphone:

Open / Close the microphone

Night Vision:

- 1、 Off, close the night vision
- 2、 On, always open night vision
- 3、 Auto, automatic switchover

Rotate The Video Feed 180°:

Flip the picture when the camera is installed under the roof.

Wi-Fi Network:

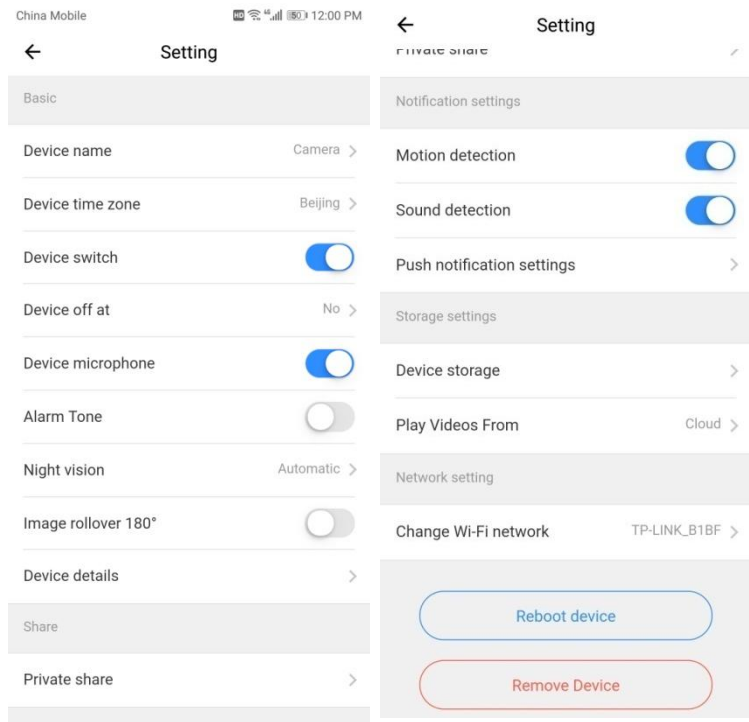
Change the Wi-Fi on the device.

Note:

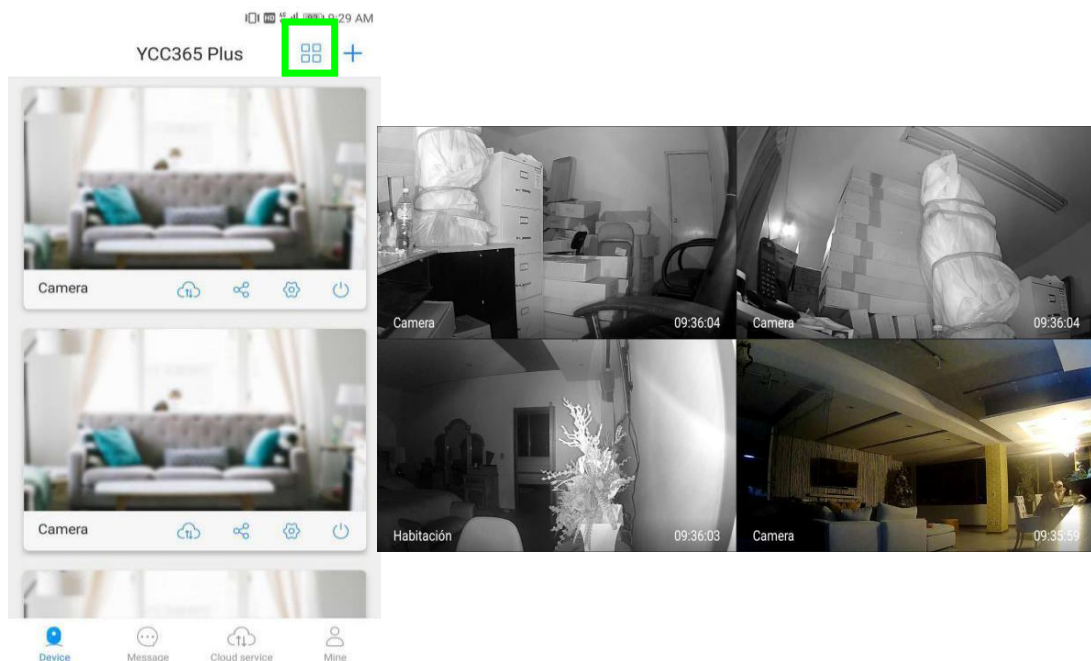
The Wi-Fi must be searchable, if the location changed and the Wi-Fi is different, please reset and connect to a new Wi-Fi again.

Device Details: Check the ID and the number of the software\hardware of the device.

Remove Device: Please remove the camera in your account if you need to use another account to add the camera.



6. Split screen to watch (Only for multiple equipment under the same account)



7 How to use a camera on a computer

Log In: www.ucloudcam.com

Get more with Recording Services.



Cloud video recording

View the last 24h of video footage from your smartphone, tablet or computer.



Easy saving and sharing

Keep up to 1h of clips. Edit and share from your smartphone.

Log In

Email Address:

Password:

Remember me

[Log In](#)

[Forgot Password](#)

[Sign Up](#)

8、 Frequently asked questions

1、 Can't add the device?

- A、 Please make sure the camera has been reset. Press the Reset button until hear the prompt tone
- B、 Only support 2.4GHZ Wi-Fi, if your Wi-Fi router is 5GHZ, please switch to 2.4/5GHZ dual mode.
- C、 Please turn on the GPS service before adding the device on the Android mobile phone . After installation is complete, you will be asked to turn on GPS service when you use the app at the first time, if you choose not to turn on the GPS service, please uninstall and reinstall the app again
- D、 Please confirm the camera wasn't binding by the other account.

There are four voice prompts in the progress

- (1) "Please configure camera by scanning code or AP hot spot"
 - (2) Select your Wi-Fi and login with your password, after the device makes a noise like "beep" you will hear this "Please wait for Wi-Fi connecting".
 - (3) "Please wait for internet connecting" after getting the Internet ip address.
 - (4) "Internet connected welcome to use cloud camera"
- A、 If you can't go to the second step, please check your Wi-Fi channel is not hidden, and the Wi-Fi router can't be so far from the camera. If this way doesn't work, please scan the QR code to add the camera.

B、 If you can't go to the third step, please reduce the number of the Wi-Fi users, and delete the special characters of your Wi-Fi password.

C、 If you can't go to the forth step, please try again, if it still doesn't work, please contact the seller.

3、 Why does it have a interval while the video is recording to the TF card

The size of the video file is limited. Once the video size close to the critical value, the video file will be created and the next video will continue to be recorded, there is a interval but so short.

4、 The TF card can't be identified?

Please check the TF card if it meets the quality requirements, when the Wi-Fi signal is not good, it also can't be identified.

5、 The video recording timeline is blank after the cloud service expired.

The video can't be replayed after cloud service expired, if there is no TF card in the camera, the video can't be recorded.

If the TF card is always working, but the video files disappeared, please check the Check TF card state, if it is normal in the App but no video has been recorded, please format the TF card. If it still doesn't work, please get a new TF card and try again.

6、 Why I can't get the notifications on my phone?

Make sure the App get the message pushing rights

Otherwise, when you are watching the real-time video in the App, there is no warning notifications, because it's unnecessary to send notifications when you are watching the video online.

Advanced message push system, the warning notifications won't be pushed to your phone all the time but it will record all the messages and videos.

7、 Camera disconnect?

Please check the power and the Internet then restart the camera. If this way doesn't work please remove the camera and add it again in the App.

8、 Circle in the video, video runs slowly?

Circle in the video means it's still loading, please check your network environment.

9、 How do the other people watch the video?

Share the App account with the other people.

10、 How many people can use the account simultaneously.

There is no theoretical limit.

11、 Why adding camera to another account would fail??

One camera one account, if the other account needs to add the camera, please remove the camera in the current device.

12、 How can I get my camera connected to the other Wi-Fi.

Two ways:

A: When you need to change to another Wi-Fi without moving the place.

Parameter setting >> Wi-Fi Network >> select the Wi-Fi

B: When the camera is moved to another place, please start the camera, you will see the "Device disconnected" on the main page, and then click "TROUBLESHOOT" to connect to the Wi-Fi again.

• After sales instruction

- 1、 The product will be updated in real time, if there is update, it will not be noticed anymore, please visit our official website for reference.
- 2、 Introductions of the basic function of the products are included in the instruction, please users to read all the information carefully.
- 3、 If any problems occur in the usage of the video camera, please contact the Seller
- 4、 We have made every effort to ensure the completeness and correctness of contents of the instruction, but there may still some deviations between part of the data and the actual situation, if you have any question or dispute,
- 5、 Losses caused by operating without following the instruction of the manual book should be assumed by users.

This instruction applies to consumer product.

Kindly reminder: if the instruction is updated, it will not be noticed any more, dual video recording memory (TF card/cloud storage) is supported by the video camera; to better safeguard safety of video recording, users could select multiple cloud video recording mode for video camera via service channels, choosing for monthly/yearly payment for storage.

FCC Caution.

§ 15.19 Labelling requirements.

This device complies with part 15 of the FCC Rules. Operation is subject to the following two conditions: (1) This device may not cause harmful interference, and (2) this device must accept any interference received, including interference that may cause undesired operation.

§ 15.21 Changes or modification warning.

Any Changes or modifications not expressly approved by the party responsible for compliance could void the user's authority to operate the equipment.

§ 15.105 Information to the user.

Note: This equipment has been tested and found to comply with the limits for a Class B digital device, pursuant to part 15 of the FCC Rules. These limits are designed to provide reasonable protection against harmful interference in a residential installation. This equipment generates uses and can radiate radio frequency energy and, if not installed and used in accordance with the winstructions, may cause harmful interference to radio communications. However, there is no guarantee that interference will not occur in a particular installation. If this equipment does cause harmful interference to radio or television reception, which can be determined by turning the equipment off and on, the user is encouraged to try to correct the interference by one or more of the following measures:

- Reorient or relocate the receiving antenna.
- Increase the separation between theequipment and receiver.
- Connect the equipment into an outlet on a circuit different from that to which the receiver is connected.
- Consult the dealer or an experienced radio/TV technician for help.

This equipment complies with FCC radiation exposure limits set forth for an uncontrolled environment. This equipment should be installed and operated with minimum distance 20cm between the radiator & your body.