

# orimagi

Make-me Book



# orimagi

Unfold your creativity

## Welcome to the Jungle

This is where your origami comes to life. Follow the easy steps to create a springy jumping cat, snappy swimming crocodile, or even a cheeky talking frog, and discover new ways to have fun with your new Orimagi friends.

Let's get folding!

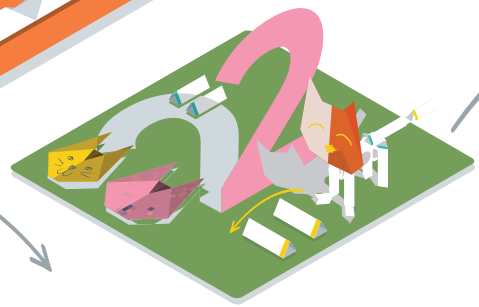




# Contents

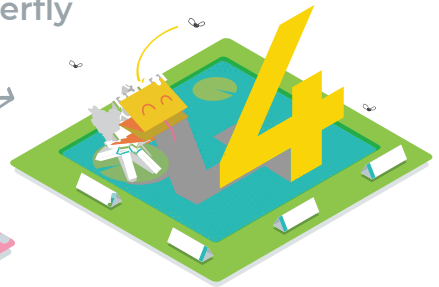


Hello Worm

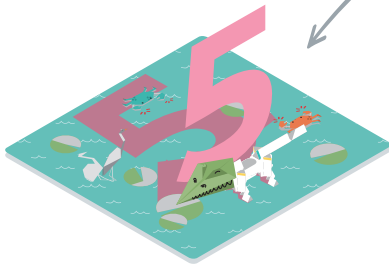


Jumping Cat

Flapping Butterfly



Talking Frog



Swimming Crocodile

# What's in the Box

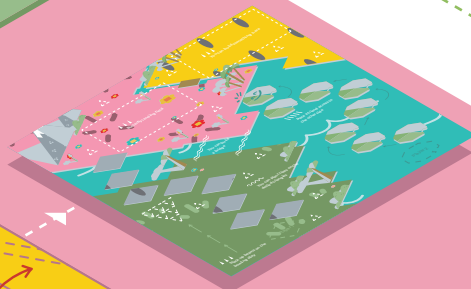
- 1 Foldable Jungle Map
- 2 My Orimagi Toolbox
- 3 Make-me Book
- 4 Origami Paper
- 5 Crease Patterns
- 6 OriBendy Smart Motor
- 7 USB Cable
- 8 Clips
- 9 More projects and instructions on OriApp



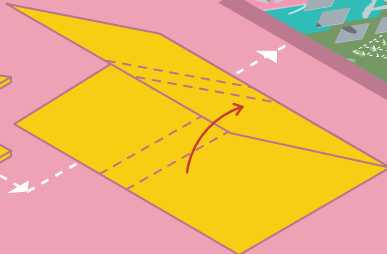
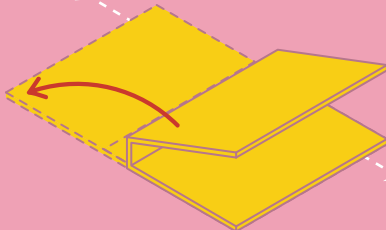
2



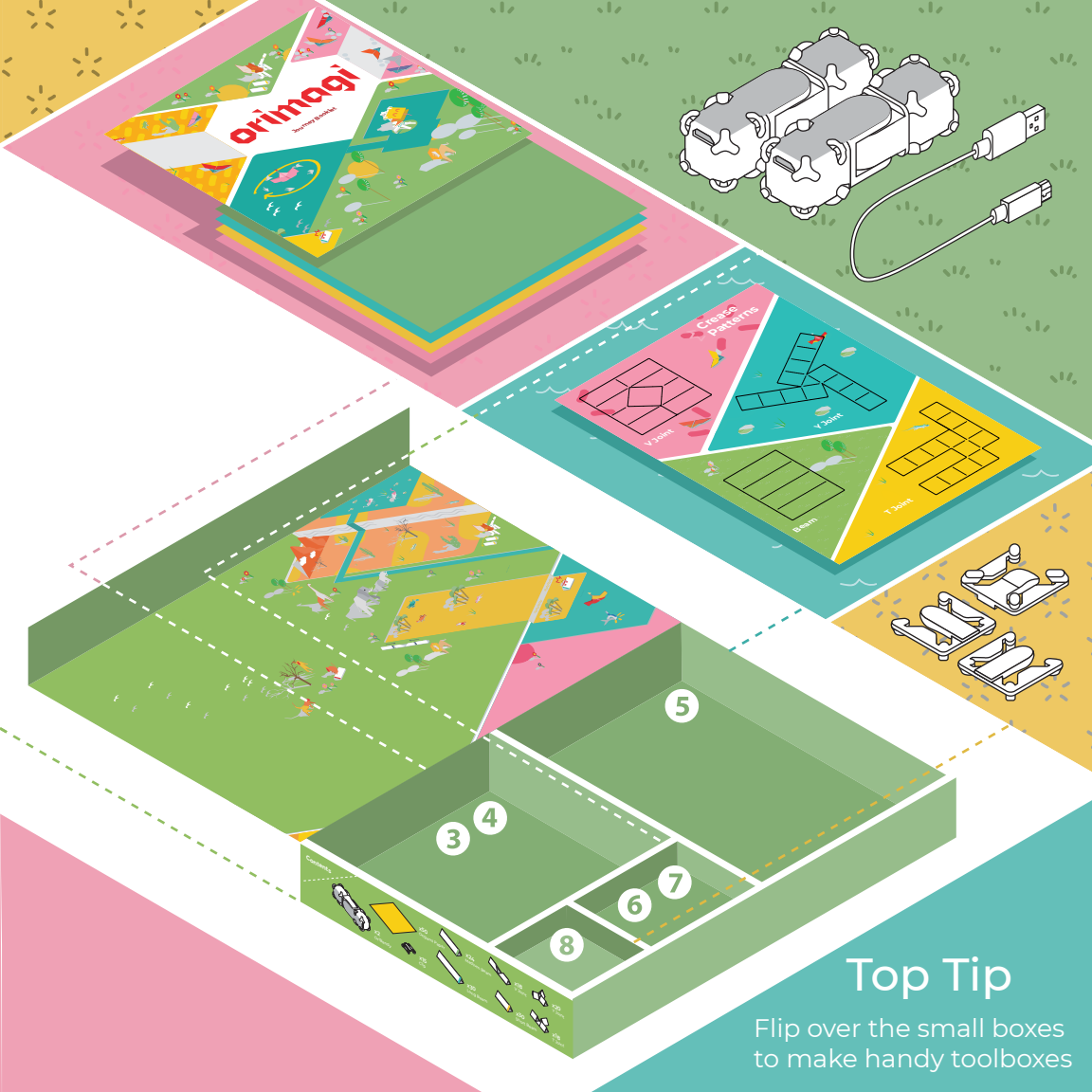
1



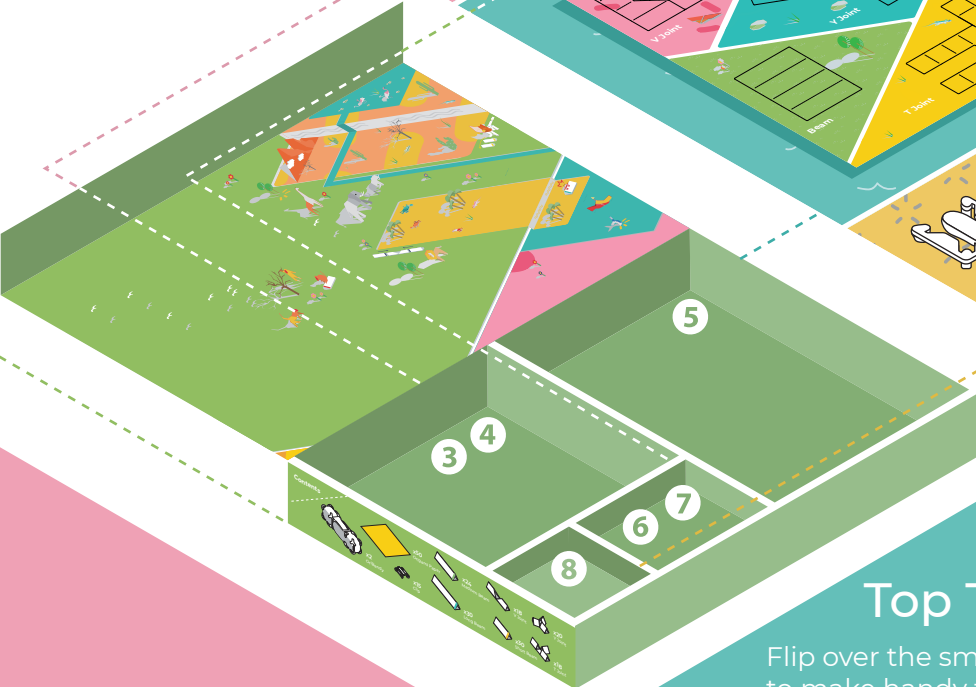
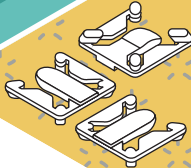
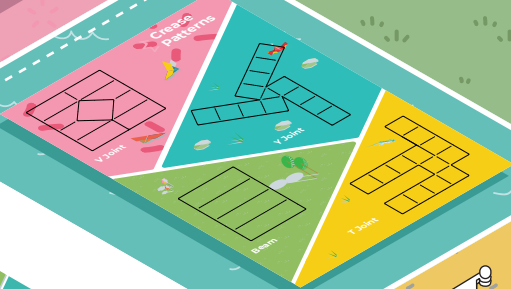
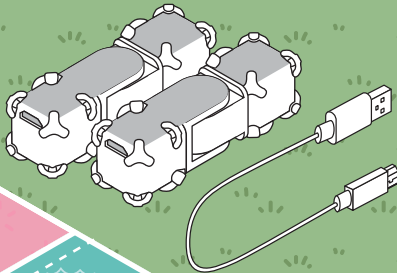
9



App  
iOS/Android



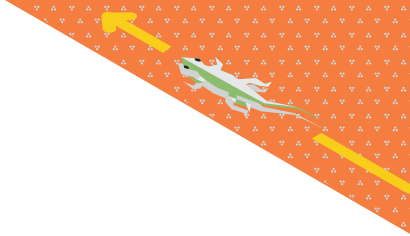
Orinogi  
Spring patterns



- Contents
- 1. AA battery
  - 2. USB cable
  - 3. Small white plastic pieces
  - 4. Small white plastic pieces
  - 5. Small white plastic pieces
  - 6. Small white plastic pieces
  - 7. Small white plastic pieces
  - 8. Small white plastic pieces

### Top Tip

Flip over the small boxes to make handy toolboxes

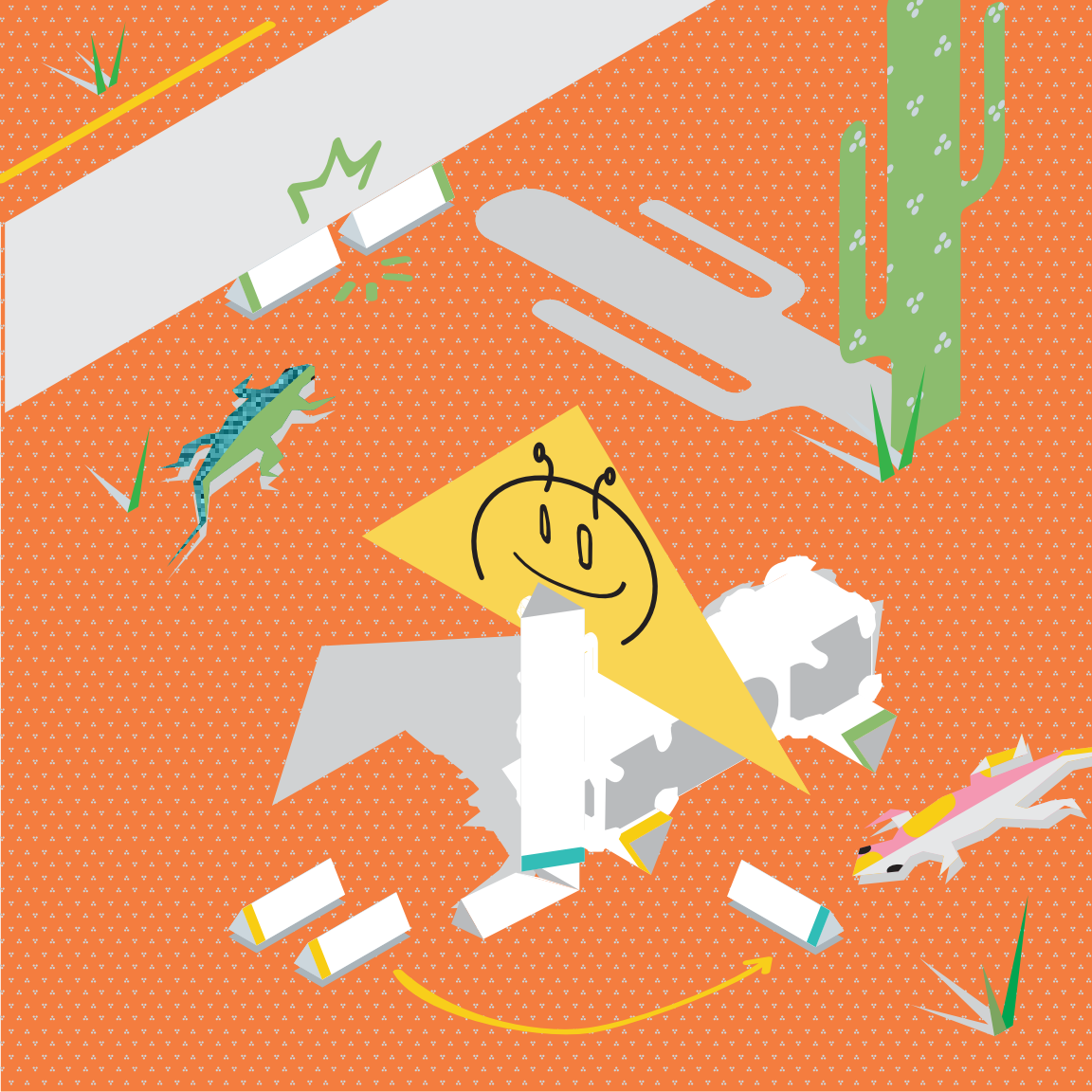


# Hello Worm

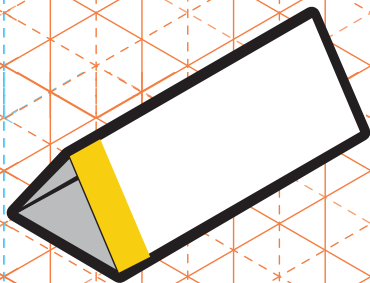
This little worm is easy to build. And once you're done, you'll know all the basic skills for making all your other creatures.







## How to Fold a Beam



Beams are really important. They're what connects to the OriBendy smart motor and helps your Orimagi move.

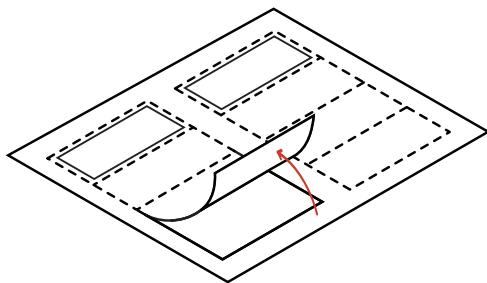


2 >

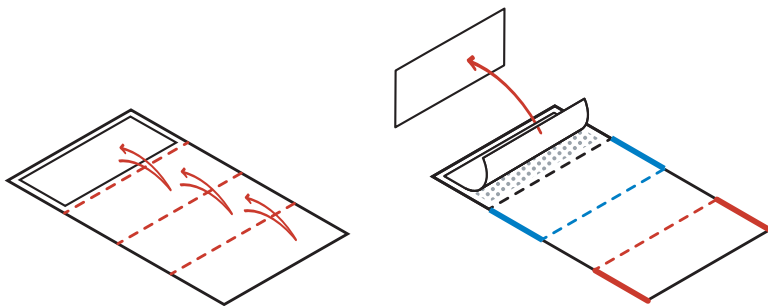
3 >

4 >

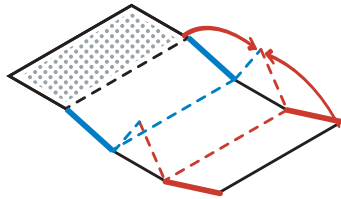
5 >



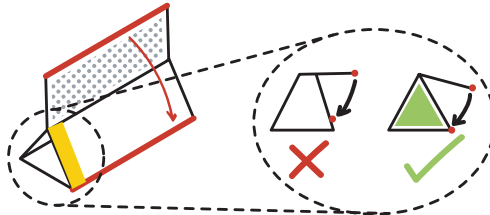
1 Pop out one piece from Sheet A.



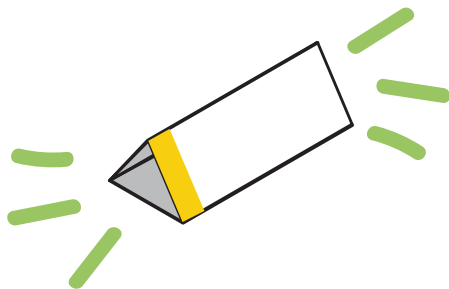
2 Put the plastic side face up. Fold along the dotted line and then unfold. Peel the back off the tape



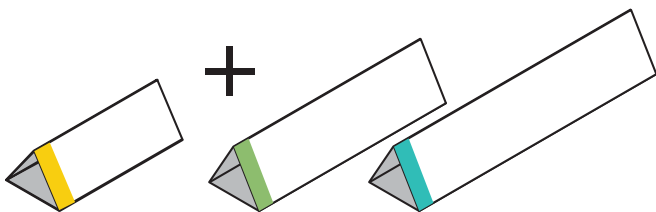
- 3 Fold upwards along the creases to make a triangular beam.



- 4 Fold the sticky face down to stick your beam in place. Make sure all the creases are straight.

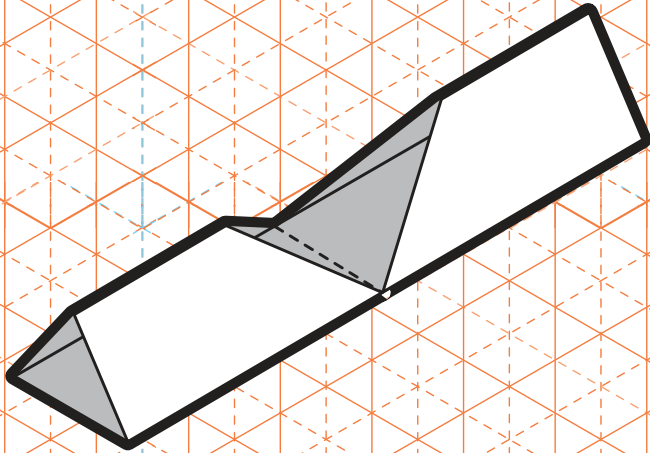


5 That's it! You just made your first beam. Great job!



6 Beams come in three sizes. Small (Yellow from Sheet A), Medium (Green, Sheet B) and Long (Blue, Sheet C). See if you can make all three sizes.

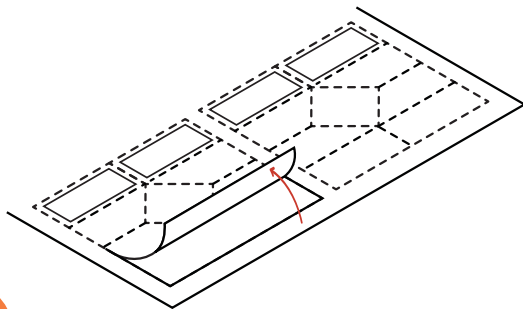
## How to Fold a V Joint



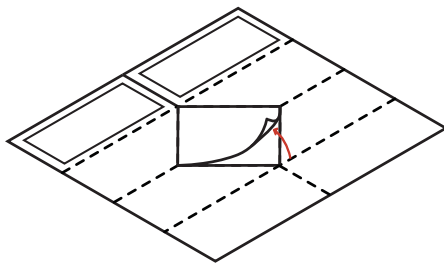
Joints help connect beams together to make your Orimagi strong.



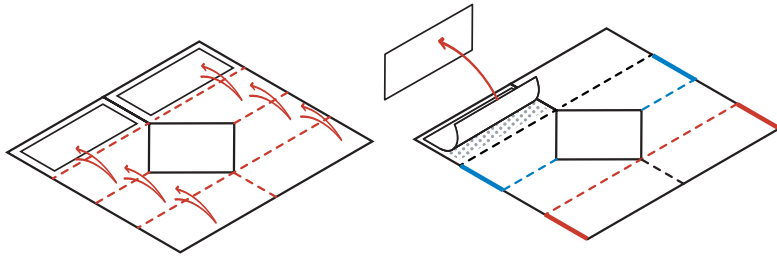
- >>> 2 >
- >>> 3 >
- >>> 4 >
- >>> 5 >



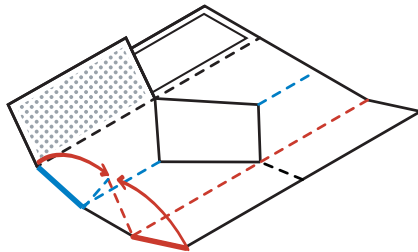
1 Pop out one piece from sheet D.



2 Pop out the middle piece.



- 3 Put the plastic side face up. Fold and unfold along each of the dotted lines. Peel the back off the tape.



- 4 Fold upwards along the creases to make a triangular beam.



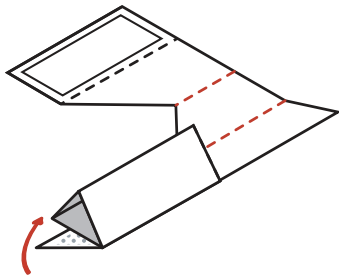


2 >

3 >

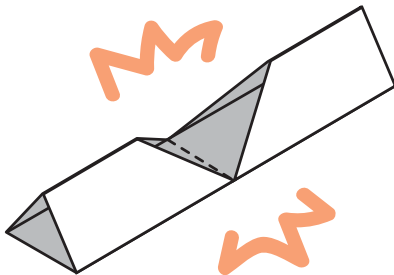
4 >

5 >



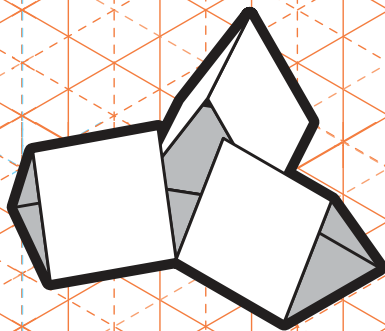
5

Fold the sticky face down to stick your beam in place. Make sure all the creases are straight. Repeat steps 3 to 5 for the other end of the beam.



All done!

## How to Fold a Y Joint



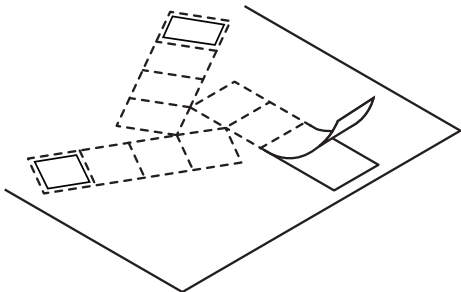


2 >

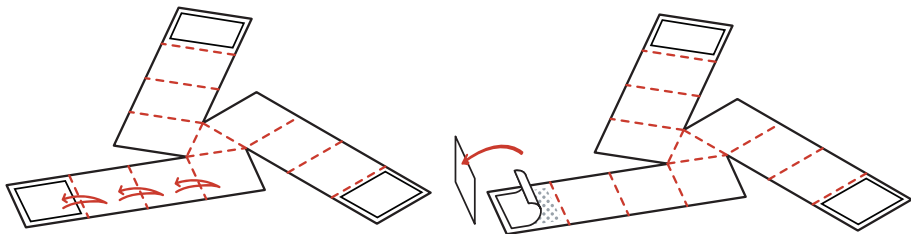
3 >

4 >

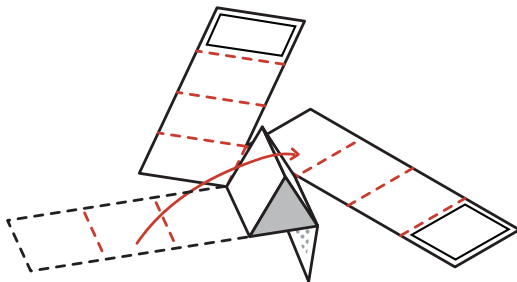
5 >



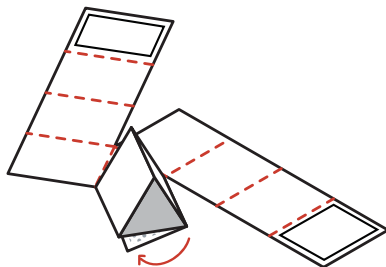
1 Pop out one piece from sheet E.



2 Put the plastic side face up. Fold and unfold along each of the dotted lines. Peel the back off the tape.



- 3 Fold upwards along the creases to make a triangular beam.



- 4 Fold the sticky face down to stick your beam in place. Make sure all the creases are straight.



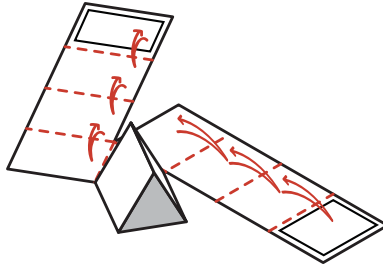
1

2

3

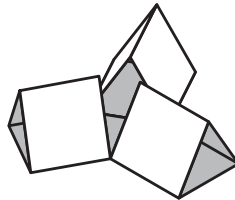
4

5



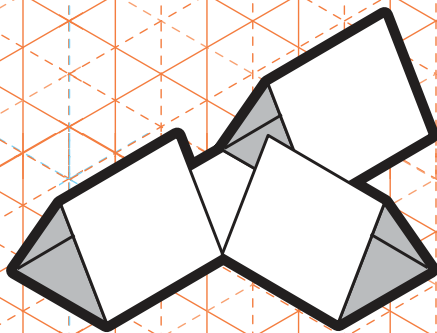
5

Repeat steps 2 to 4 for the other sides of your Y joint.



Finish

## How to Fold a T Joint



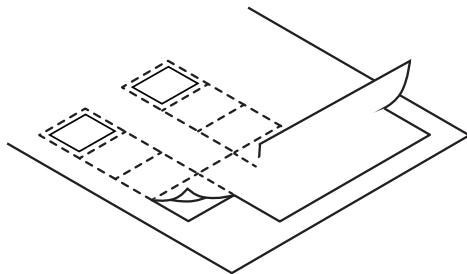


2 >

3 >

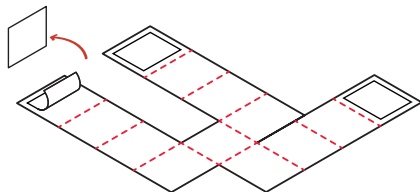
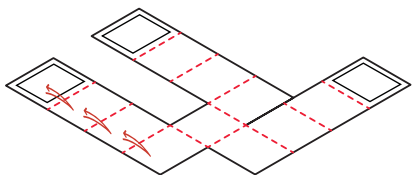
4 >

5 >



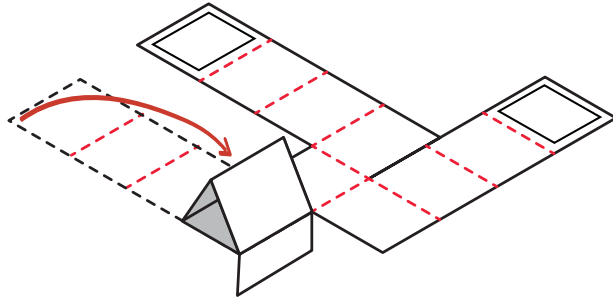
1

Pop out one piece from sheet F.



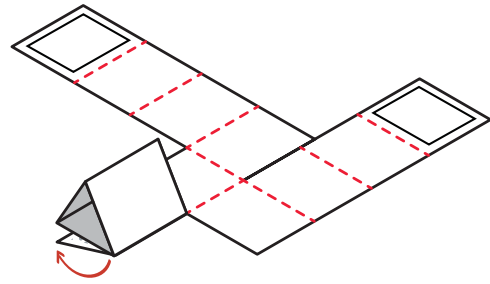
2

Put the plastic side face up. Fold and unfold along each of the dotted lines. Peel the back off the tape.



3

Fold upwards along the creases to make a triangular beam.



4

Fold the sticky face down to stick your beam in place. Make sure all the creases are straight.



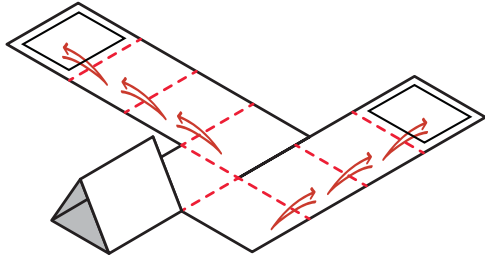


2 >

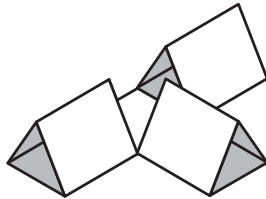
3 >

4 >

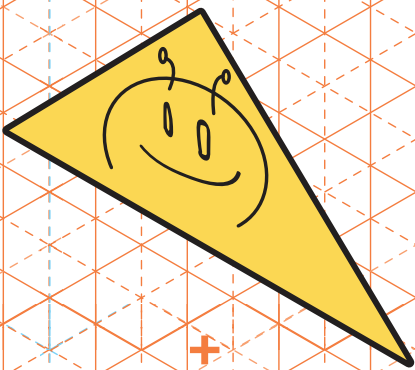
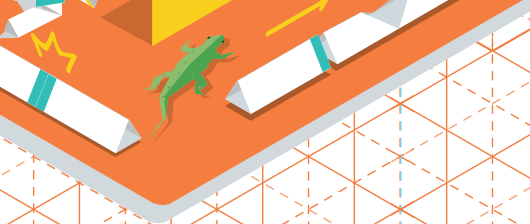
5 >



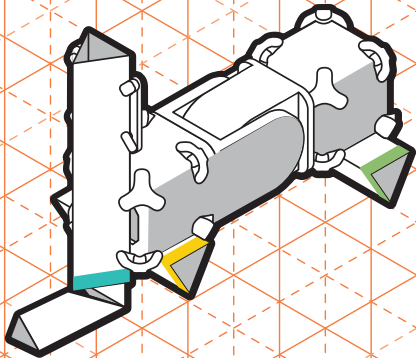
5 Repeat steps 2 to 4 for the other sides of your T joint.



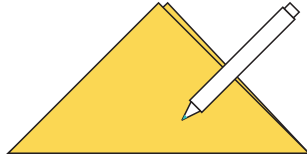
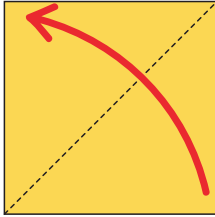
Finish



+



## Worm Head



1

Fold paper diagonally to make a triangle.

2

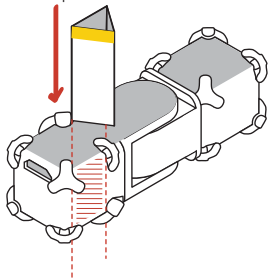
Draw a face for your Hello Worm.



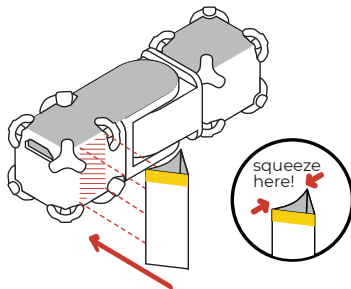
Easy!

# OriBendy Setup

Example 1

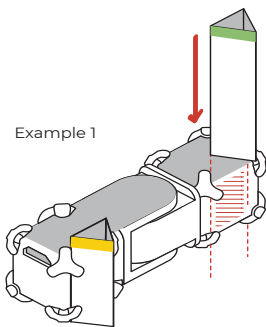


Example 2

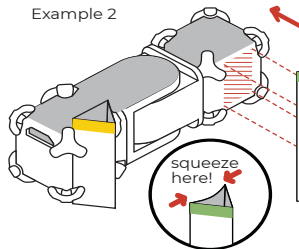


- 1 Slide a short beam into the slots on one side of OriBendy (Eg. 1) or directly push the beam into place (Eg. 2).

Example 1



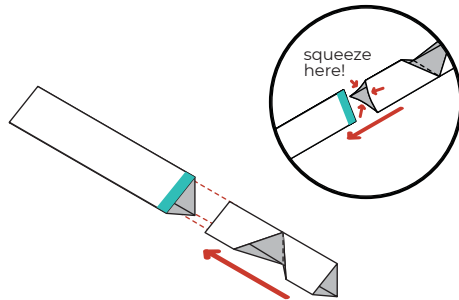
Example 2



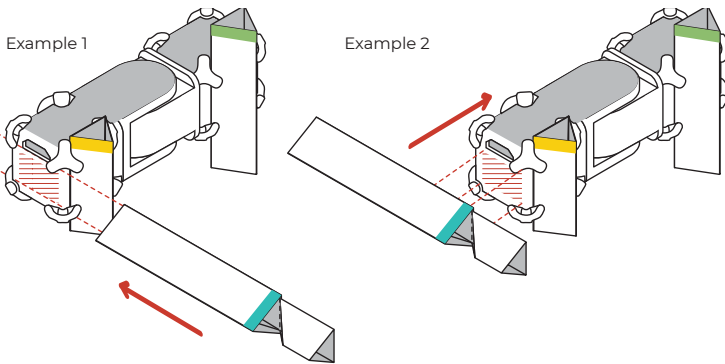
- 2 Slide a medium beam into the other slots on the same side of OriBendy (Eg. 1 or 2).



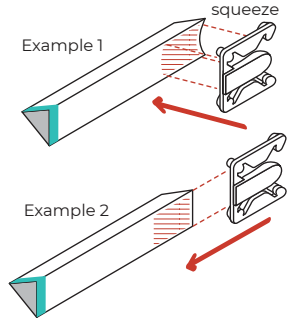
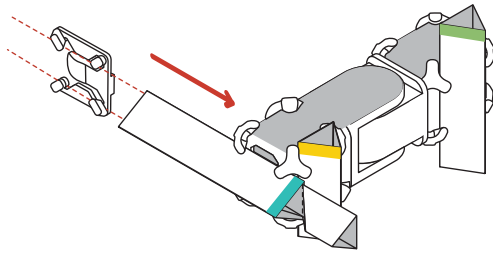
- 2 >
- 3 >
- 4 >
- 5 >



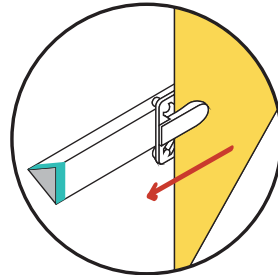
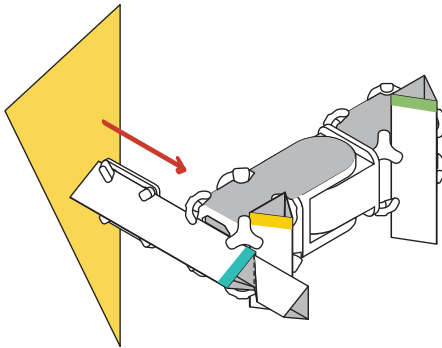
**3** Gently insert a V Joint into the end of a long beam.



**4** Slide that beam into the slots on the end of OriBendy (Eg. 1) or directly push it into place (Eg. 2).



5 Slide or push a clip onto the other end of the long beam (Eg. 1 or Eg. 2).



6 Attach your worm's head to the clip.

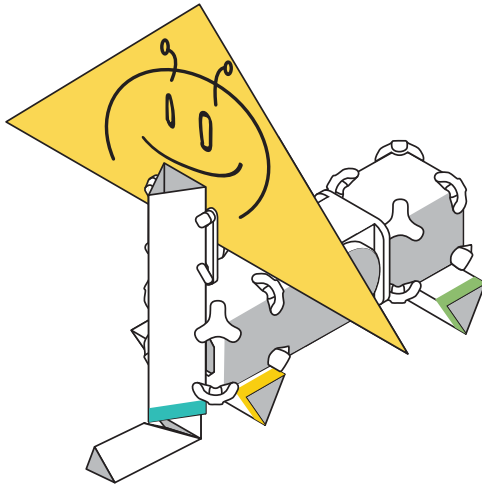


2 >

3 >

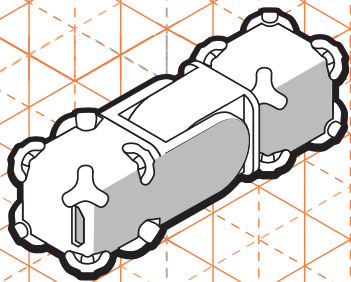
4 >

5 >



🌟 Finish 🌟

# Connect OriBendy to the App



+





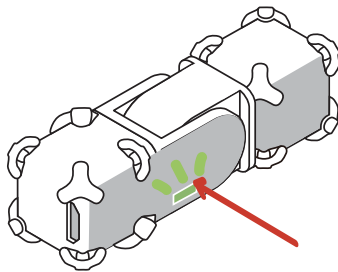


2 >

3 >

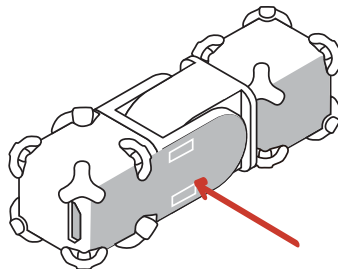
4 >

5 >



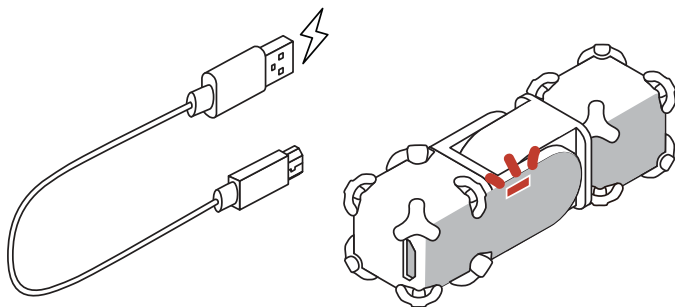
1

Press the button to turn on. Green LED will flash.

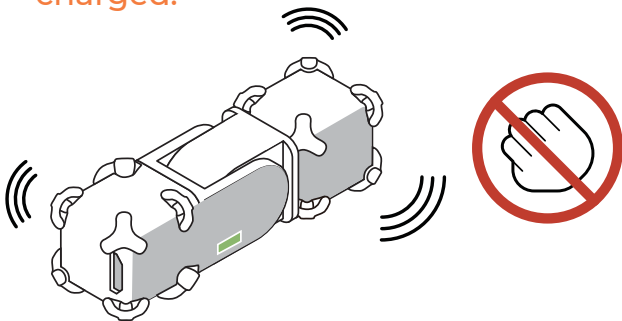


2

Hold button for 2 second to turn off. Green LED will turn off.



- 3 Use the USB cable to charge. Red LED shows OriBendy is charging. When LED goes out, OriBendy is fully charged.



- 4 Don't try to force OriBendy while it is moving.

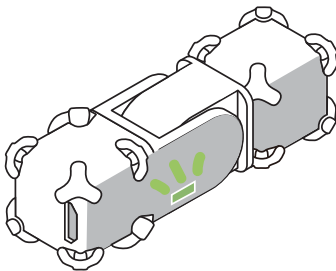


2 >

3 >

4 >

5 >



5

Download OriApp from App Store® or Google Play™ to play.



## Warning

Do NOT allow children under 3 years old to play with this product. This product contains small parts.

Do NOT modify or disassemble OriBendy. Doing so may expose small parts or damage the product.

Do NOT get any liquid on or into the product.

Do NOT use product in extreme environment such as extreme hot or cold, dust, sand, or high humidity.

Do NOT swallow any parts of the product.

ONLY use standard USB ports(5V 1A) to charge OriBendy.





# Legal

Model: OIBY  
FCC ID: 2AS7COIBY



Any Changes or modifications not expressly approved by the party responsible for compliance could void the user's authority to operate the equipment.

This device complies with part 15 of the FCC Rules. Operation is subject to the following two conditions: (1) This device may not cause harmful interference, and (2) this device must accept any interference received, including interference that may cause undesired operation.

NOTE: This equipment has been tested and found to comply with the limits for a Class B digital device, pursuant to part 15 of the FCC Rules. These limits are designed to provide reasonable protection against harmful interference in a residential installation. This equipment generates, uses and can radiate radio frequency energy and, if not installed and used in accordance with the instructions, may cause harmful interference to radio communications. However, there is no guarantee that interference will not occur in a particular installation. If this equipment does cause harmful interference to radio or television reception, which can be determined by turning the equipment off and on, the user is encouraged to try to correct the interference by one or more of the following measures:

- Reorient or relocate the receiving antenna.
- Increase the separation between the equipment and receiver.
- Connect the equipment into an outlet on a circuit different from that to which the receiver is connected.
- Consult the dealer or an experienced radio/TV technician for help.

This equipment complies with FCC radiation exposure limits set forth for an uncontrolled environment. This equipment should be installed and operated with minimum distance 20cm between the radiator & your body.

This transmitter must not be co-located or operating in conjunction with any other antenna or transmitter.



## Contact Us

Orimagi, Inc.  
100 William T. Morrissey Blvd.,  
Venture Development Center,  
Boston, MA 02125-3393  
[www.orimagi.io](http://www.orimagi.io)

**For troubleshooting, warranty information,  
and return policy, please visit our website.**

© 2019 Orimagi, Inc. All rights reserved.

Orimagi is a trademark of Orimagi, Inc.

Android and Google Play is a trademark of  
Google LLC.

App Store is a service mark of Apple Inc.

Made in China





## Fold Robot, Unfold Creativity

For more fun projects and inspiration,  
check out the OriApp!