

## Car Mount Wireless Charger

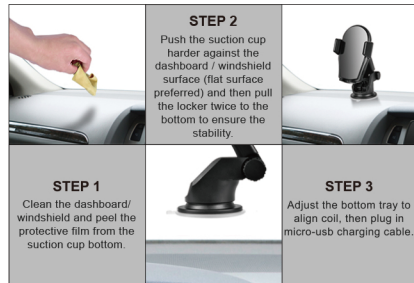
Model:XRT-053

### User Manual



Please read this instruction manual carefully and keep it properly before using this product.

#### Usage Instruction



#### Product Specifications

Product Name	Car Mount Wireless Charger
Model	XRT - 053
Size (L*W*S)	12*7.5*2cm
Net Weight	137g
Input	5V 2A , 9V 1.6A
Output	10W Max
Charging induction Distance	0-6mm
Application Model	Compatible with iPhone, Samsung, LG, Mato etc

#### Package Contents

Car Mount Wireless Charger x1  
Micro - USB charging cable x1  
Air vent clip x 1  
Suction cup mount x 1  
User Manual x 1

#### Attention

- 1 Please install the car holder on a suitable place before starting driving navigation and do not operate and adjust the bracket during driving.
- 2 The automatic car mount supports 4 - 6.5 inches of mainstream model mobile phone, and the cell phone should have wireless charging function.
- 3 Please remove Uneven or rugged case, metal ring holder, metal attachments and credit cards for optimal charging. Be sure your phone case is NOT thicker than 4mm (0.16 inches) .
- 4 Please turn on car vent condition (fan) when it is a hot day or you need to use the item for a long time, which will help you to cool down the wireless car charger and speed up charging process.

- 5 Please turn off the screen and navigation and charge your phone for 10 minutes when your phone is in low power. Then open the navigation. It can avoid losing power very quickly.
- 6 QC 3.0 car charger adapter is required as its power source to fast charge your mobile phone.
- 7 Don't mount on soft, leather, vinyl, curved, plush fabrics, or bumpy surface.
- 8 Wash with warm water and let it dry naturally for reusing suction cup mount.
- 9 Not toys for fun, please keep it away from children.

#### Warranty

Year limited warranty For FAQs and more information This warranty does not apply to:

- 1) Damage caused by failure to follow instructions relating to product's use or the installation of components;
- 2) Damage caused by accident, abuse, misuse, fire, floods, earthquake or other external causes;
- 3) Damage caused by service performed by anyone who is not a representative of Charvoxt;
- 4) A product that is used commercially or for a commercial purpose.

#### FCC Warning:

This device complies with part 15 of the FCC Rules. Operation is subject to the following two conditions: (1) this device may not cause harmful interference, and (2) this device must accept any interference received, including interference that may cause undesired operation. Any changes or modifications not expressly approved by the party responsible for compliance could void the user's authority to operate the equipment.

NOTE: This equipment has been tested and found to comply with the limits for a Class B digital device, pursuant to Part 15 of the FCC Rules. These limits are designed to provide reasonable protection against harmful interference in a residential installation. This equipment generates, uses and can radiate radio frequency energy and, if not installed and used in accordance with the instructions, may cause harmful interference to radio communications. However, there is no

guarantee that interference will not occur in a particular installation.

If this equipment does cause harmful interference to radio or television reception, which can be determined by turning the equipment off and on, the user is encouraged to try to correct the interference by one or more of the following measures:

- Reorient or relocate the receiving antenna.
- Increase the separation between the equipment and receiver.
- Connect the equipment into an outlet on a circuit different from that to which the receiver is connected.
- Consult the dealer or an experienced radio/TV technician for help.

#### FCC Radiation Exposure Statement

This equipment complies with FCC radiation exposure limits set forth for an uncontrolled environment. This equipment should be installed and operated with a minimum distance of 20 cm between the radiator and your body  
**FCC ID: 2A579-XRT-053**

#### Contact Us

Thank you for choosing Charvoxt Car Mount Wireless Charger, if you need help please contact us directly:

[support@charvoxt.cn](mailto:support@charvoxt.cn)