

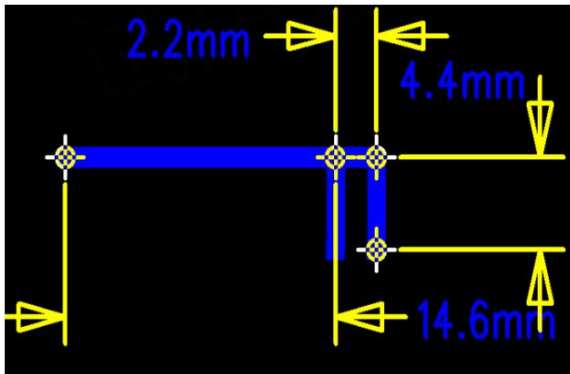
shenzhen yippee technology company., Ltd.

Product Antenna Test

1、 Project situation

Client	Project	Antenna implementation mode
Q5	Q5-ATB1113-V1.0	Onboard antenna
Frequency Range (MHz)		
2.4G	2400-2500	MHz

2、 Size view



3、 Test Summary

Name	Parameter	Method	Standard no.
Antenna	Radiation efficiency	IEEE Standard	ANSI/IEEE Std149-1979
	Gain and directivity	TestProcedures for Antennas	

4、 Test Site

5.1、 Test Facility

Name: shenzhen yippee technology company., Ltd.

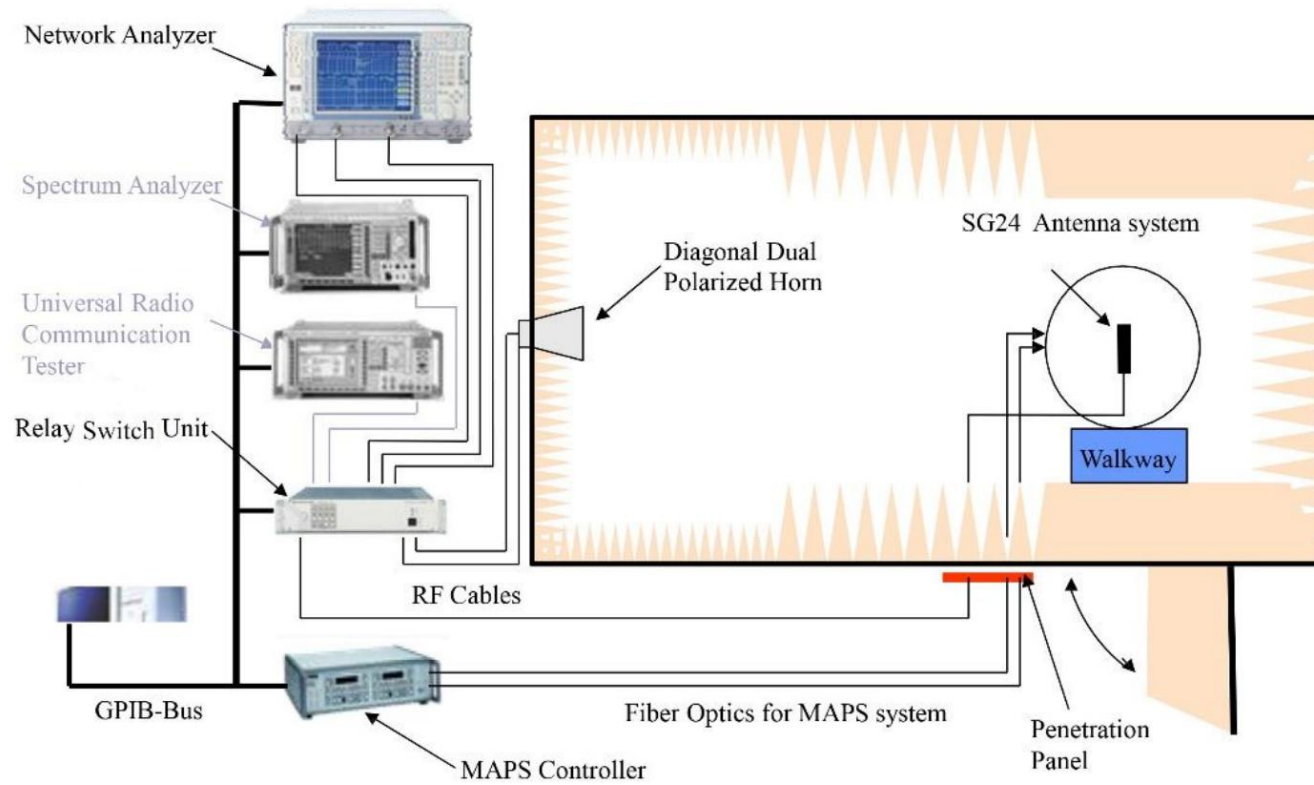
5、 List Of Test And Measurement Instruments

Name of Equipment	Manufacturer	Serial No.	Last Cal.	Calibration interval
Network Analyzer	E5071B	Agilent	Jun.10,2024	1 Year

6、 Test environmental

Environment Parameter	Selected Values During the Testes	
Relative Humidity	45% to 55%	
Value	Temperature(°C)	Voltage(V)
NTNV	20 to 24	N/A
Note:NV: Normal Voltage; NT: Normmal Temperature		

7、 Test Setup



8、 Network division test standing wave pattern

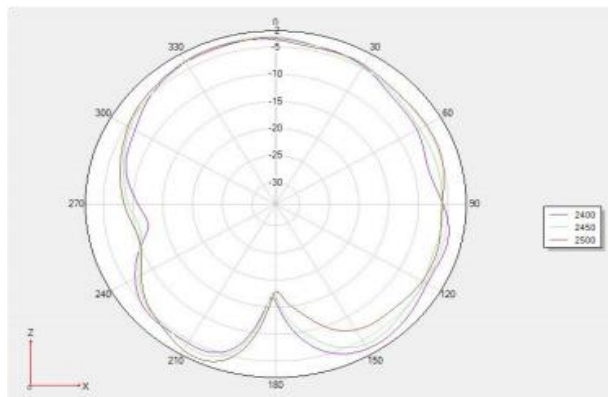


9、 2.4G passive test data

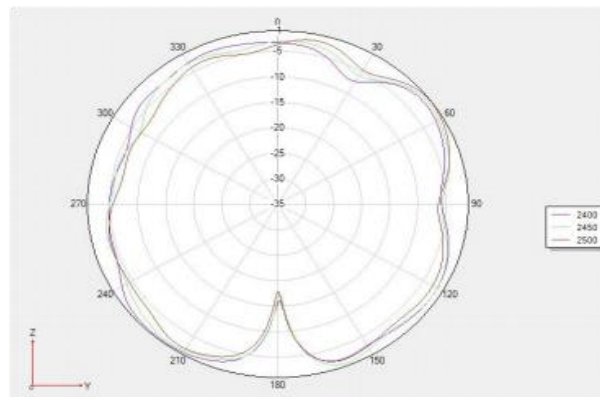
Frequency	Efficiency(%)	Gain. (dBi)
2400MHz	38.19	1.71
2410MHz	39.17	1.99
2420MHz	39.72	1.74
2430MHz	39.26	1.62
2440MHz	40.74	1.88
2450MHz	42.17	2.18
2460MHz	41.5	2.05
2470MHz	41.5	2.07
2480MHz	42.07	2.47
2490MHz	41.3	2.08
2500MHz	40.09	1.87

10、 Antenna test 2D/3D view

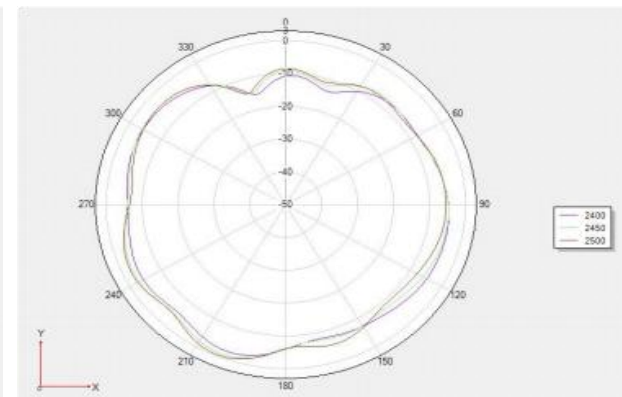
Phi 0 2D view



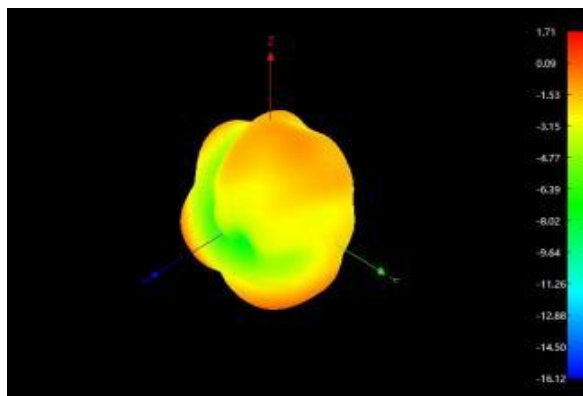
Phi 90 2D view



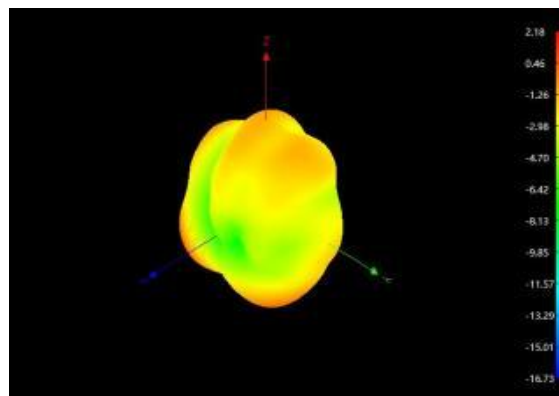
Theta 90 2D view



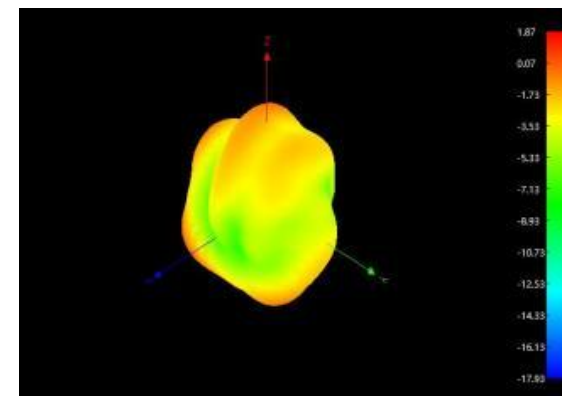
2400



2450



2500



11、 EUT setup photo of free space OTA testing

