



We Do Care.

Keymao is a brand offering creative wearable products covering sound, light, and body care technology. Care your daily life with small technology, care your shopping experience.

Discover the Keymao collection, join the story at www.keymao.com

Magic Headphone Headband.

Combined with a stereo headset, Keymao original designed magic headband prevent you from fighting with tangling ear phone cable in most of the sports activities. Latest advanced acoustic components ensure brilliant sound quality with deep bass and crystal clear treble. Wear music everywhere, wear fantastic everywhere. Enjoy it.

NO TANGLING, NO SWEATING ALL OVER.

Bluetooth earphones keep from tangling cable; moisture wicking headwear holds hair and sweat away from eyes and face. Enjoy music for housework, sports, sleeping, etc.

www.keymao.com

GREAT SOUND, LONG STANDBY.

Latest Bluetooth 4.1 CSR technology & advanced acoustic components ensure brilliant sound quality with deep bass and crystal clear treble. 1.5-hour charging last for 8-hour play-time.

STRETCH FIT, ANTI-SLIP, OVER EAR SOFT.

100% stretchy microfiber fits for heads of all size, keeps headphones firmly stay in place. 5mm sponge over the earphone offers super soft feeling with less pressure on ears.

ALL-IN-ONE FITNESS ACCESSORY.

Get a pullover headband headphones with more than ten functions. Use it as a Bluetooth sleep headphones; running, gym and yoga headbands; cycling skull beanie cap; balaclava for hiking and fishing trips; makeup & facial headband.

EASY ASSEMBLE, FAST DRY.

Magnetic mount, Clap on in 1 sec. Attaching and removing in a snap. Hassle-free real wireless headphones, no more annoying cable. Powerful magnets built to be attached on hoodies, thin hats, head scarves, and other thin head wears.

www.keymao.com

Notice:

** First time using, we suggest charging first for a better experience.*

** Precision components may get defective occasionally during delivery, please contact us for a better solution once battery issue occurred.*

** Remove Keymao from Bluetooth menu to reconnect if you have a problem connecting.*

** Make sure it gets fully charged to prevent from low battery notification if you wear to sleep. Please pay attention to the battery symbol on your phones.*

** The gray one is designed tighter for better sports performance. If you find it unfit, try the black one which is looser for a more comfortable experience.*

Customer Support:

All our product comes with a 12-month warranty. If, despite our best efforts, we have overlooked a defect of any kind, please feel free to contact.

Find us on Facebook for better service and assistance.



www.keymao.com

Keymao-M20 Bluetooth Headphone Specification

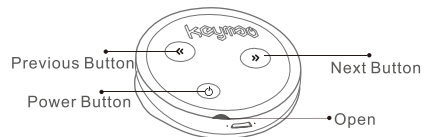
Bluetooth Version	Bluetooth V5.0
Chip Module	JL6916
Response Frequency	20Hz-20KHz
Sensitivity	105dB/±3dB
Microphone Size	Φ4.0*1.5mm
Microphone Sensitivity	-42dB/±3dB
Output Power	20mW
Audio output	Dual Channel
Operation Voltage	3.3V-4.2V
Working Hour	>8 hours
Standby Time	100 hours

Recharging Current	100mA
Battery Type	Polymer Li-ion battery 180mAh 3.7V
Recharging Voltage	DC 5V
Charging port	Micro USB
Applicable Products	Bluetooth Devices
Function	Bluetooth Data Transmit/Phone Call/Music Play

Pairing TWS headsets

Press and hold both headsets at the same time until the headset indicator flashes rapidly (red and blue flash alternately), double-click power button on any of the headsets, and the indicator will switch until the blue light flashes slowly. If the pairing is not successful, repeat the above steps.

www.keymao.com



Function Description:

- *Power on—Press and hold POWER button for 3 Seconds.
- *Power off—Press and hold POWER button for 3 seconds.
- *Headphones Pairing—For the first time of pairing, double click one of the power buttons, and an indication voice saying “connected” will be heard when the headphones are paired. Then it is time to search Keymao Duo with your phones, tablets and other bluetooth devices. Choose “Keymao Duo” and wait for bluetooth to pair. For later use, the headphones will be paired automatically. And the headphones will connect to the most recent paired phone or other bluetooth device if it is available.
- *Play/Pause—Click POWER button to play /pause music on standby mode.
- *Song Switching: Click the previous/next song buttons.
- *Volume Adjust: Long press previous/next song buttons.
- *Call Answering: Click POWER button to pick up phone calls.
- *Call Hanging Up: Click POWER button to hang up an on going phone call.
- *Call Rejection: Press and hold the POWER button for 2 seconds to reject an incoming call.
- *Last Number Redial: On standby or music play mode, double-click the POWER button to dial the last call you made in your call history.
- *Low Battery Alert: Alter tune will be heard if takes place.
- *Indicator:
Red indicators on—Charging.
Red indicators off—Full charged.
Red and blue indicators flash alternately—pairing mode.
Blue light slow flash—Music playing.

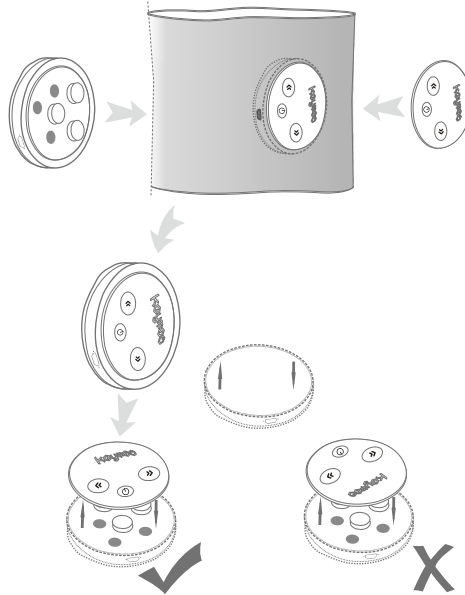
Precautions:

- Please make sure the headphones are connected to each other before connecting the Bluetooth device.
- If there is no sound on one side, please remove the Bluetooth device, repeat the [pair wireless headset] step, and then connect the Bluetooth device.
- In the headset call mode, only one side can hear voice. This is normal.
- Remain clean & dry. let dry for 48 hrs before turning on or charging if the headset get wet, Switch off if not in use. Do not store it with dead battery.
- If you fail in pairing for the first time, delete KEYMAO_DUO from your Bluetooth menu for another try.
- Please watch out when using the headphones.
- The charging time is about 3 hours, please avoid long time charging.
- The system is automatically set to the maximum volume when the system is turned on. Please adjust the volume appropriately to avoid excessive volume which may affect your hearing.
- Normally, the working distance may be shortened if the devices were connected to 2.4G frequency.

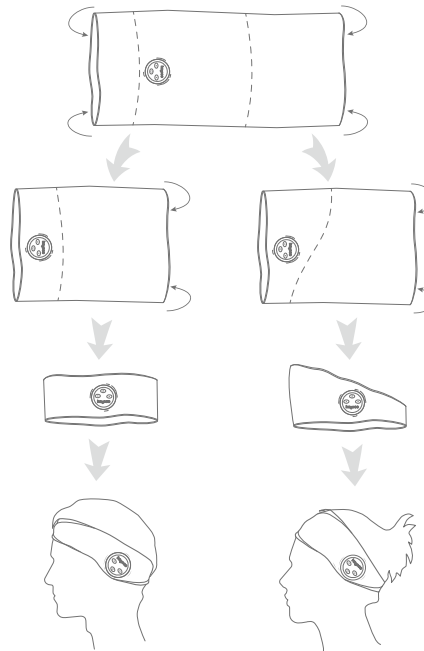
Warranty:

- 90-day warranty for headwear against manufacturer defects.
- 1-year warranty for headset against manufacturer defects.
- Warranty void if headset has been tampered with, immersed in liquid, exposed to extreme heat, chemicals, electrostatic interference or dust.

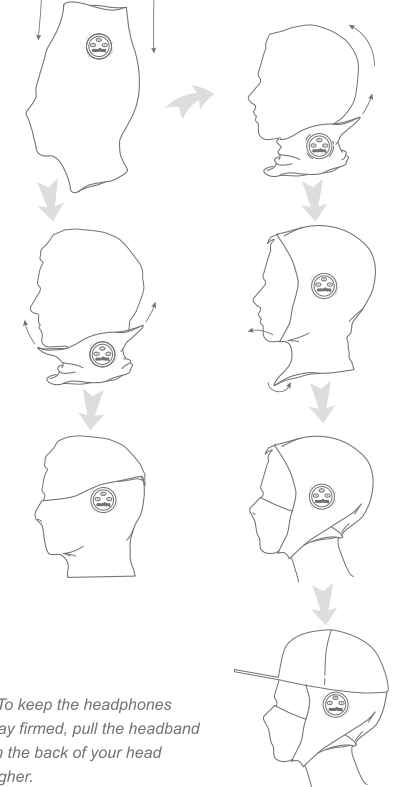
Installation headphone with headwear



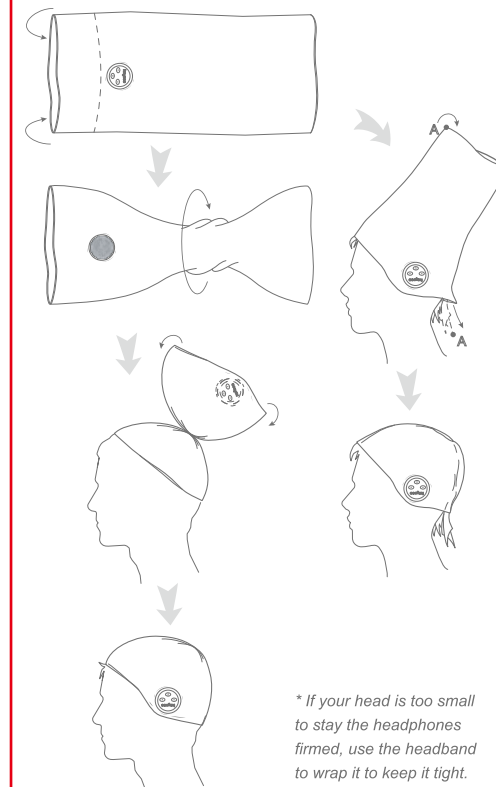
- 1 Please put the headphones on the inside of the headscarf;
- 2 Place the cover with the button on the outside of the headscarf; rotate until the magnetic blocks are completely fitted (please check the earphones and the cover are fully fitted before use)



* If your head is too small to stay the headphones firmed, use the headband to wrap it to keep it tight.



* To keep the headphones stay firmed, pull the headband on the back of your head higher.



* If your head is too small to stay the headphones firmed, use the headband to wrap it to keep it tight.

FCC Statement

This equipment has been tested and found to comply with the limits for a Class B digital device, pursuant to part 15 of the FCC rules. These limits are designed to provide reasonable protection against harmful interference in a residential installation. This equipment generates, uses and can radiate radio frequency energy and, if not installed and used in accordance with the instructions, may cause harmful interference to radio communications. However, there is no guarantee that interference will not occur in a particular installation. If this equipment does cause harmful interference to radio or television reception, which can be determined by turning the equipment off and on, the user is encouraged to try to correct the interference by one or more of the following measures:

- Reorient or relocate the receiving antenna.
- Increase the separation between the equipment and receiver.
- Connect the equipment into an outlet on a circuit different from that to which the receiver is connected.
- Consult the dealer or an experienced radio/TV technician for help.

To assure continued compliance, any changes or modifications not expressly approved by the party.

Responsible for compliance could void the user's authority to operate this equipment. (Example- use only shielded interface cables when connecting to computer or peripheral devices).

This equipment complies with Part 15 of the FCC Rules. Operation is subject to the following two conditions:

- (1) This device may not cause harmful interference, and
- (2) This device must accept any interference received, including interference that may cause undesired operation.

RF warning statement:

The device has been evaluated to meet general RF exposure requirement. The device can be used in portable exposure condition without restriction.

Any Changes or modifications not expressly approved by the party responsible for compliance could void the user's authority to operate the equipment.