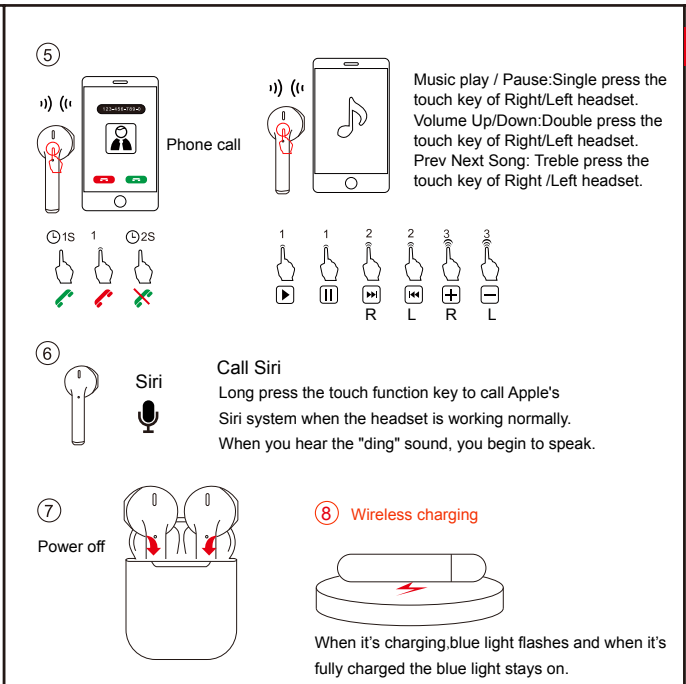
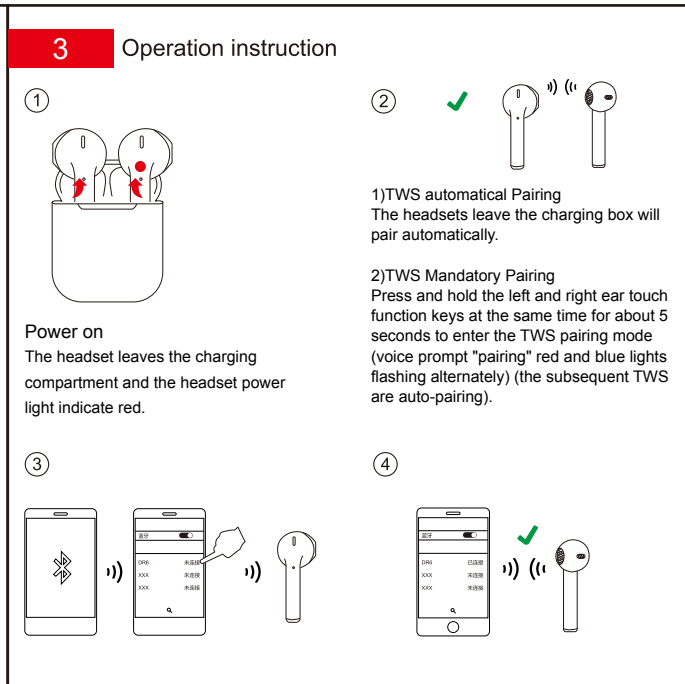


### 2 Specifications

|                                |                       |
|--------------------------------|-----------------------|
| Bluetooth                      | : V5.0                |
| Communication scope            | : ≤ 15m               |
| Frequency response             | : 20Hz-20KHz          |
| Sensitivity                    | : 107 dB SPL +/- 3 dB |
| Protocol supported             | : HSP/HFP/A2DP/AVRCP/ |
| Battery life                   | : About 5H            |
| Standby time                   | : About 150H          |
| Charging box USB charging      | : About 1H            |
| Charging box wireless charging | : About 1.5H          |
| Product size (charging box)    | : 53*20*30mm          |
| Product weight                 | : 36g                 |
| Battery capacity of Headset    | : 30mAH/3.7V          |
| Battery capacity of Box        | : 300mAH              |



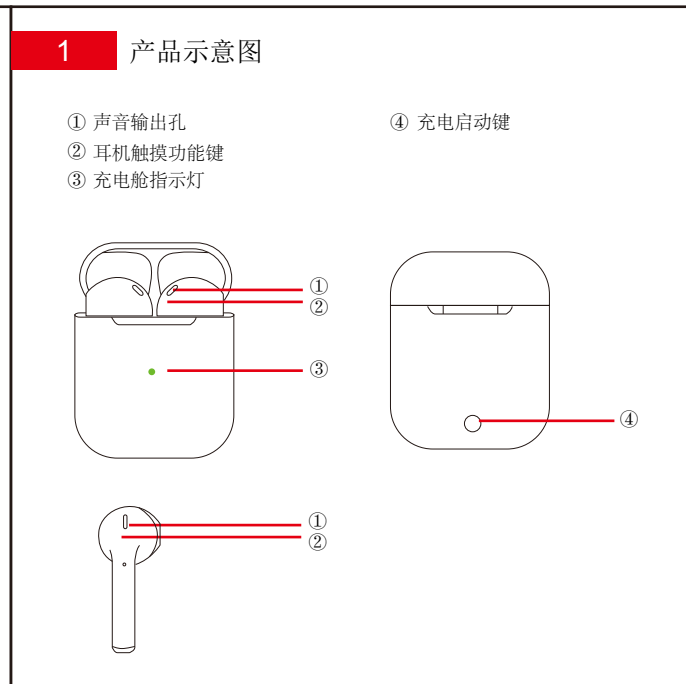
### 4 Warning

Please follow the safety cautions and use the product in a correct way to avoid casualties and damages.

Please follow the following notes to prevent accidents like fire, overheat, chemical leakage and explosion.

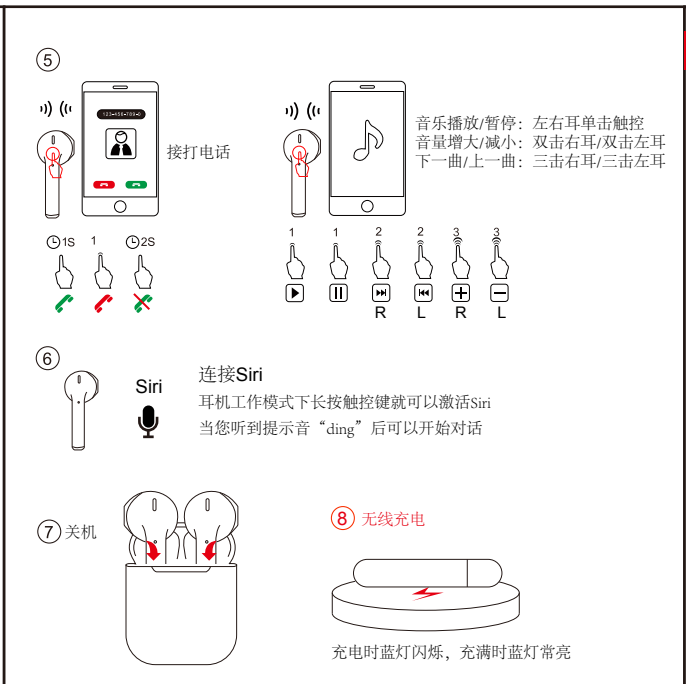
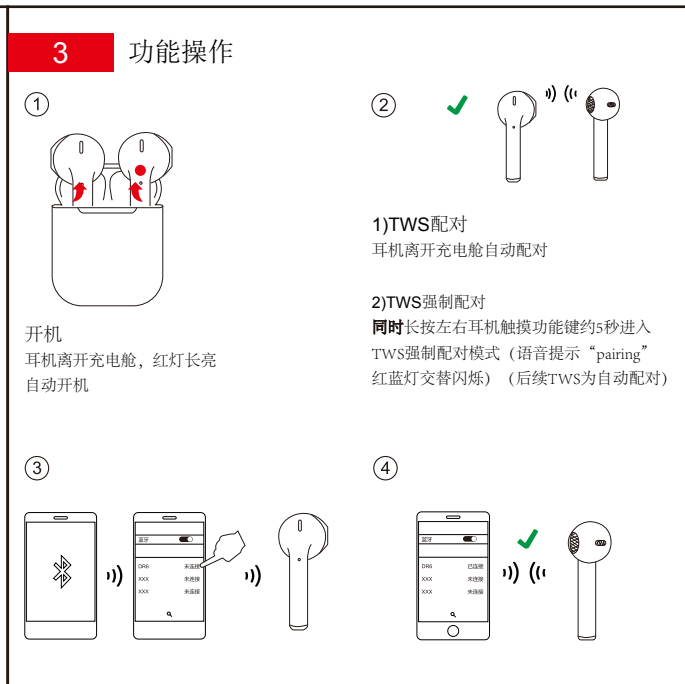
- 1) To reduce the risks of fire and damage of the battery, please do not expose the product to the rain or moisture environment.
- 2) To reduce the risks of fire, please do not cover the product with inflammables like carpet and quilt.
- 3) To prevent the product from further damages, it is prohibited to dismantle the broken device without permit. In this case, please consult the Aftersales Department for the repair.
- 4) Please do not use it when the device is overheating.
- 5) Please do not apply any batteries, powers or accessories other than specified in the Instruction.
- 6) Please do not use self-made or modified batteries.
- 7) Do not use the wireless charging transmitter that has not passed the Qi certification standard to charge the charging box.

CE RoHS



### 2 产品规格

|         |                       |
|---------|-----------------------|
| 产品型号    | : i10s                |
| 蓝牙版本    | : V5.0                |
| 传输范围    | : ≤ 15m               |
| 频率范围    | : 20Hz-20KHz          |
| 灵敏度     | : 107 dB SPL +/- 3 dB |
| 协议      | : HSP/HFP/A2DP/AVRCP/ |
| 电池续航时间  | : 约5小时                |
| 待机时间    | : 约150小时              |
| 充电舱充电时间 | : 约1小时                |
| 耳机充电时间  | : 约1.5小时              |
| 尺寸      | : 53*20*30mm          |
| 重量      | : 36g                 |
| 耳机电池容量  | : 30mAH/3.7V          |
| 充电舱电池容量 | : 300mAH              |



### 4 警告

请遵照安全警告，正确使用产品，避免人员伤亡。

请遵照下列注意事项，以防止火灾、过热、化学泄漏和爆炸等事故。

- 1) 为减少电池着火和损坏的风险，请勿将产品暴露在雨水或潮湿的环境中。
- 2) 为了减少火灾的风险，请不要用地毯和被子等易燃物覆盖产品。
- 3) 为防止产品进一步损坏，禁止擅自拆除损坏的设备。在这种情况下，请咨询售后部门进行修理。
- 4) 当装置过热时请不要使用。
- 5) 请不要使用任何电池、电源或附件，但须在指示中注明。
- 6) 请不要使用自制或改装的电池。
- 7) 不使用未通过气认证标准的无线充电发射机对充电箱进行充电。

CE RoHS

#### FCC Statement

1. This device complies with Part 15 of the FCC Rules. Operation is subject to the following two conditions:

(1) This device may not cause harmful interference.

(2) This device must accept any interference received, including interference that may cause undesired operation.

2. Changes or modifications not expressly approved by the party responsible for compliance could void the user's authority to operate the equipment.

#### NOTE:

This equipment has been tested and found to comply with the limits for a Class B digital device, pursuant to Part 15 of the FCC Rules.

These limits are designed to provide reasonable protection against harmful interference in a residential installation.

This equipment generates uses and can radiate radio frequency energy and, if not installed and used in accordance with the instructions, may cause harmful interference to radio communications. However, there is no guarantee that interference will not occur in a particular installation. If this equipment does cause harmful interference to radio or television reception, which can be determined by turning the equipment off and on, the user is encouraged to try to correct the interference by one or more of the following measures:

Reorient or relocate the receiving antenna.

Increase the separation between the equipment and receiver.

Connect the equipment into an outlet on a circuit different from that to which the receiver is connected.

Consult the dealer or an experienced radio/TV technician for help.

#### FCC Radiation Exposure Statement

This equipment complies with FCC radiation exposure limits set forth for an uncontrolled environment.