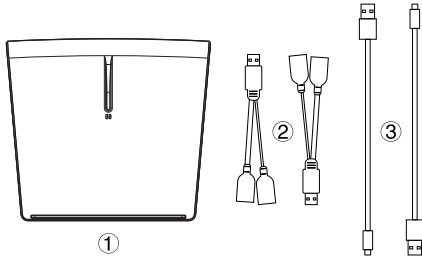
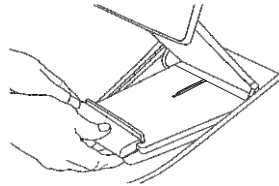
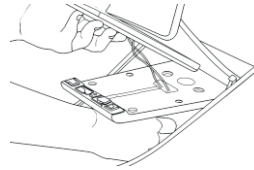


## Package Content



- ① Wireless Charging Pad
- ② USB Splitters
- ③ Micro USB Cables

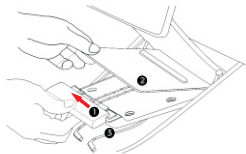
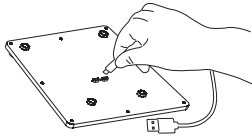
Connect the charger to the front USB ports.



Place the wireless charger and put back the black protection bar.

## Installation Instructions

Plug the two Micro USB cables into the ports at the back of the charger.

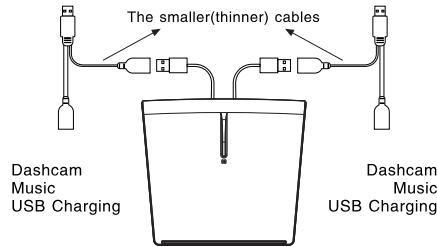


Remove ① the black protection bar, ② the original Tesla pad and ③ the two charging cables.

## USB Splitters Instruction

Tesla Left Port

Tesla Right Port



Please connect the wireless charger to the power-only cables (the smaller cables) of the USB splitters, not the power-data cables.

More accessories just for Tesla Model 3 are available now: Seat Covers, Spoiler, Cup Holder and Center Console Liners, Wheel Bands Kit, Sunshades, Phone Holder, All Weather Interior Mats, Integrated Key Holder, Wheel Center Caps Pedal Covers, Screen Protector, Carbon Fiber Decal, LED Puddle Lights, Trunk Mats, Key Card Holder, etc.

FCC ID : 2AS5P-TM3-05-15W

FCC WARNING:

This device complies with part 15 of the FCC Rules. Operation is subject to the following two conditions: (1) this device may not cause harmful interference, and (2) this device must accept any interference received, including interference that may cause undesired operation. Any changes or modifications not expressly approved by the party responsible for compliance could void the user's authority to operate the equipment.

NOTE: This equipment has been tested and found to comply with the limits for a Class B digital device, pursuant to Part 15 of the FCC Rules. These limits are designed to provide reasonable protection against harmful interference in a residential installation. This equipment generates, uses and can radiate radio frequency energy and, if not installed and used in accordance with the instructions, may cause harmful interference to radio communications. However, there is no guarantee that interference will not occur in a particular installation. If this equipment does cause harmful interference to radio or television reception, which can be determined by turning the equipment off and on, the user is encouraged to try to correct the interference by one or more of the following measures: -- Reorient or relocate the receiving antenna. -- Increase the separation between the equipment and receiver. -- Connect the equipment into an outlet on a circuit different from that to which the receiver is connected. -- Consult the dealer or an experienced radio/TV technician for help.

To maintain compliance with FCC's RF Exposure guidelines, This equipment should be installed and operated with minimum distance between 20cm the radiator your body: Use only the supplied antenna.