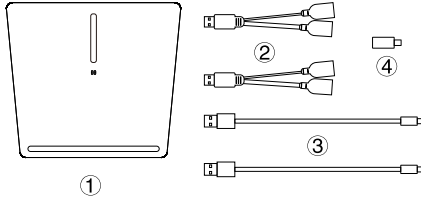


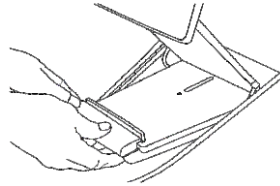
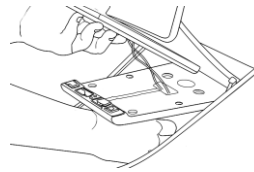
Package Content



- ① Wireless Charging Pad
- ② USB Splitters
- ③ Micro USB Cables
- ④ USB Type C to Lightning Converter

USB Type C to Lightning Converter is used at the integrated cable of the wireless charging pad so iPhone can be charged through the cable as well.

Connect the charger to the front USB ports.



Place the wireless charger and put back the black protection bar.

More accessories just for Tesla Model 3 are available now: Seat Covers, Spoiler, Cup Holder and Center Console Liners, Wheel Bands Kit, Sunshades, Phone Holder, All Weather Interior Mats, Integrated Key Holder, Wheel Center Caps Pedal Covers, Screen Protector, Carbon Fiber Decal, LED Puddle Lights, Trunk Mats, Key Card Holder, etc.

FCC ID : 2AS5P-TM3-02

FCC WARNING : This device complies with part 15 of the FCC Rules. Operation is subject to the following two conditions: (1) this device may not cause harmful interference, and (2) this device must accept any interference received, including interference that may cause undesired operation.

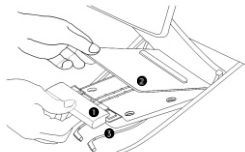
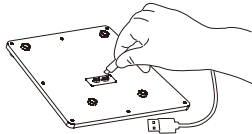
Any changes or modifications not expressly approved by the party responsible for compliance could void the user's authority to operate the equipment. NOTE: This equipment has been tested and found to comply with the limits for a Class B digital device, pursuant to Part 15 of the FCC Rules. These limits are designed to provide reasonable protection against harmful interference in a residential installation. This equipment generates, uses and can radiate radio frequency energy and, if not installed and used in accordance with the instructions, may cause harmful interference to radio communications. However, there is no guarantee that interference will not occur in a particular installation. If this equipment does cause harmful interference to radio or television reception, which can be determined by turning the equipment off and on, the user is encouraged to try to correct the interference by one or more of the following measures:

- Reorient or relocate the receiving antenna.
- Increase the separation between the equipment and receiver.
- Connect the equipment into an outlet on a circuit different from that to which the receiver is connected.
- Consult the dealer or an experienced radio/TV technician for help.

To maintain compliance with FCC's RF Exposure guidelines, This equipment should be installed and operated with minimum distance between 20cm the radiator your body: Use only the supplied antenna. and on, the user is encouraged to try to correct the

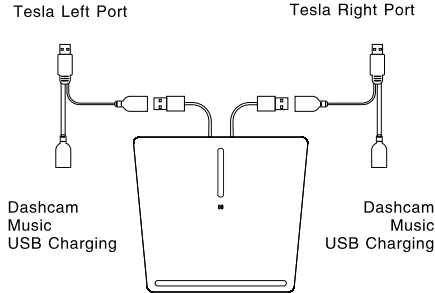
Installation Instructions

Plug the two Micro USB cables into the ports at the back of the charger.



Remove ① the black protection bar, ② the original Tesla pad and ③ the two charging cables.

USB Splitters Instruction



Please connect the wireless charger to the power-only cables (the smaller cables) of the USB splitters, not the power+data cables.

interference by one or more of the following measures:

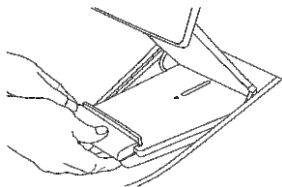
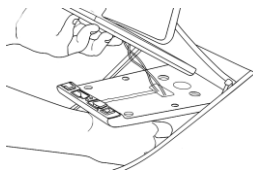
- Reorient or relocate the receiving antenna.
- Increase the separation between the equipment and receiver.
- Connect the equipment into an outlet on a circuit different from that to which the receiver is connected.
- Consult the dealer or an experienced radio/TV technician for help.

To maintain compliance with FCC' s RF Exposure guidelines, This equipment should be installed and operated with minimum distance between 20cm the radiator your body: Use only the supplied antenna.

FCC RF exposure statement:

The equipment complies with FCC Radiation exposure limit set forth for uncontrolled environment. This equipment should be installed and operated with minimum distance 20cm between the radiator and your body.

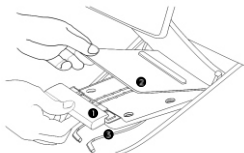
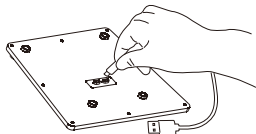
步骤三：
无线充电电源线穿过中托板，连接到两个集成的USB电缆插入端口。



步骤四：
将无线充电放置在托板上，盖上黑色托盖，完成安装。

无线充安装说明

步骤一：
取出包装里面的micro线，插入对应的接口处。

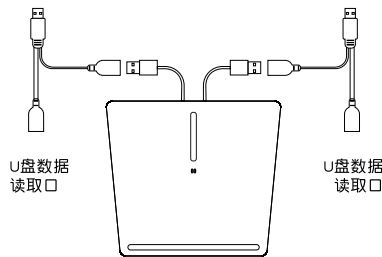


步骤二：
①取下黑色托盖
②取下原特斯拉垫板（将其更换为无线充）
③取出两根USB充电线（替换为无线充的电源线）

USB 分离线安装

车身USB接入口

车身USB接入口



U盘数据
读取口

U盘数据
读取口

USB分离线有两个端口（细小的线缆）为充电端口，请将无线充电器连接到此端口，（粗的线缆）为数据线端口，U盘读卡器链接此端口。

Tesla Model 3 Wireless Charging Pad User Manual