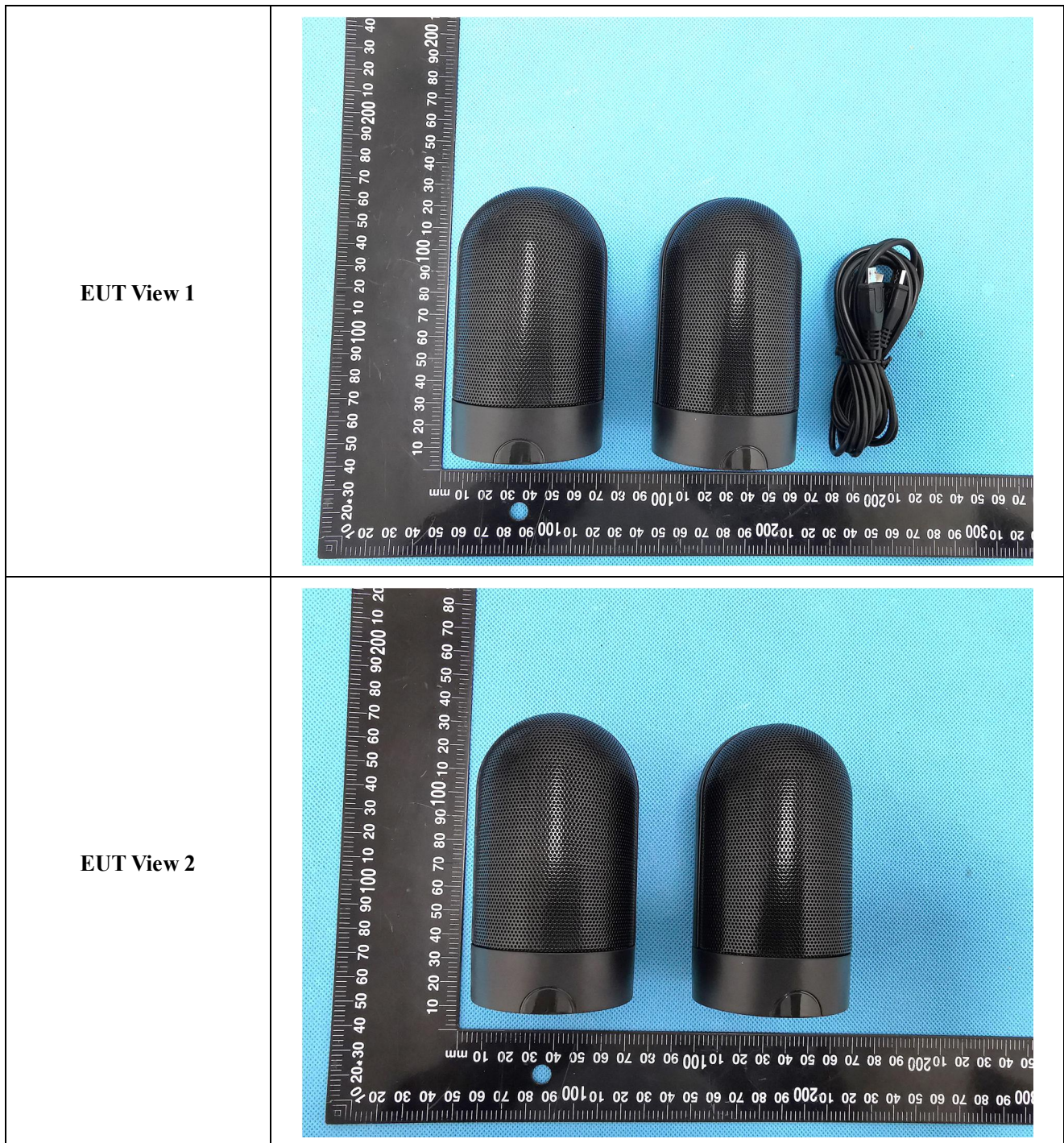
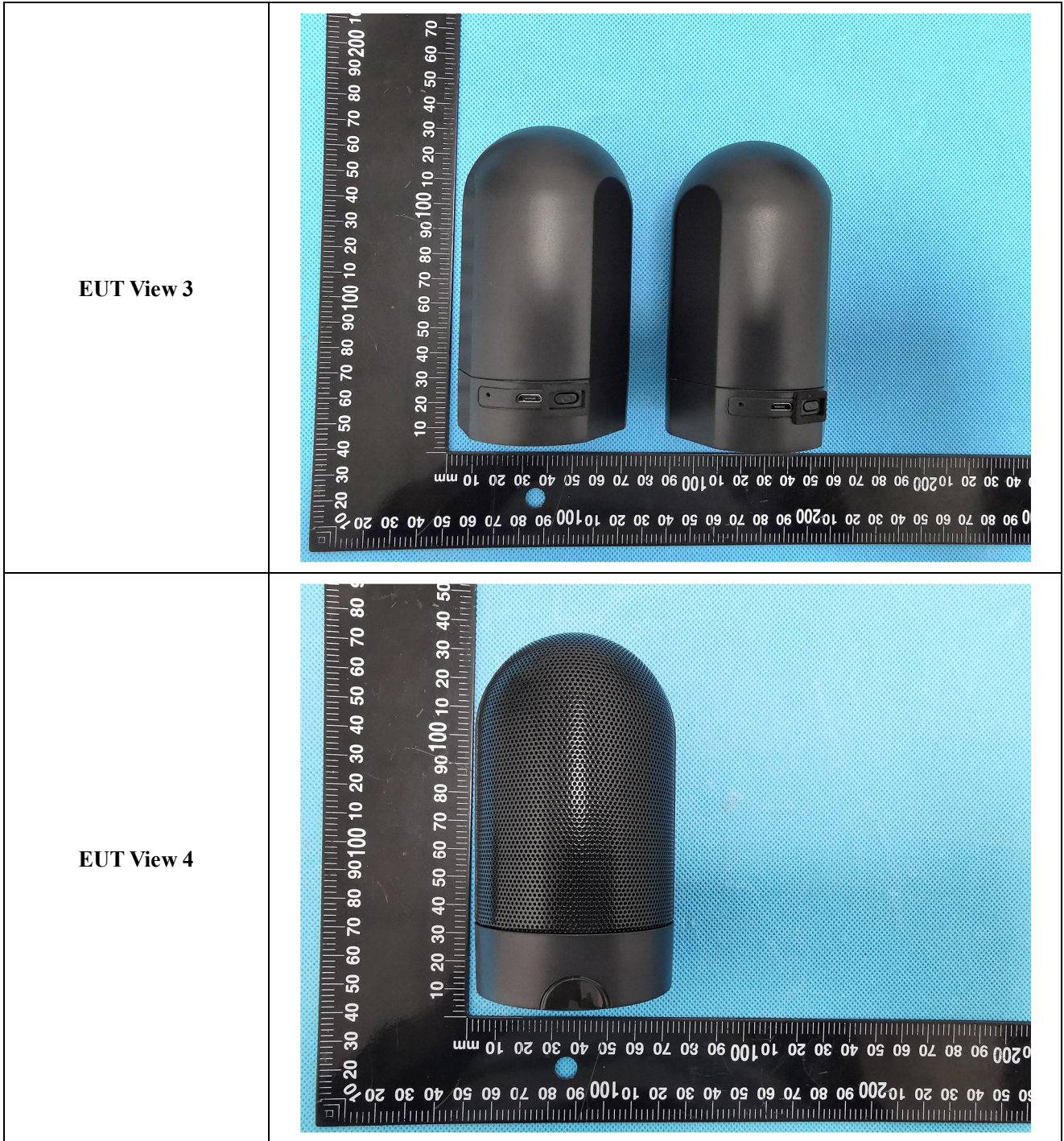
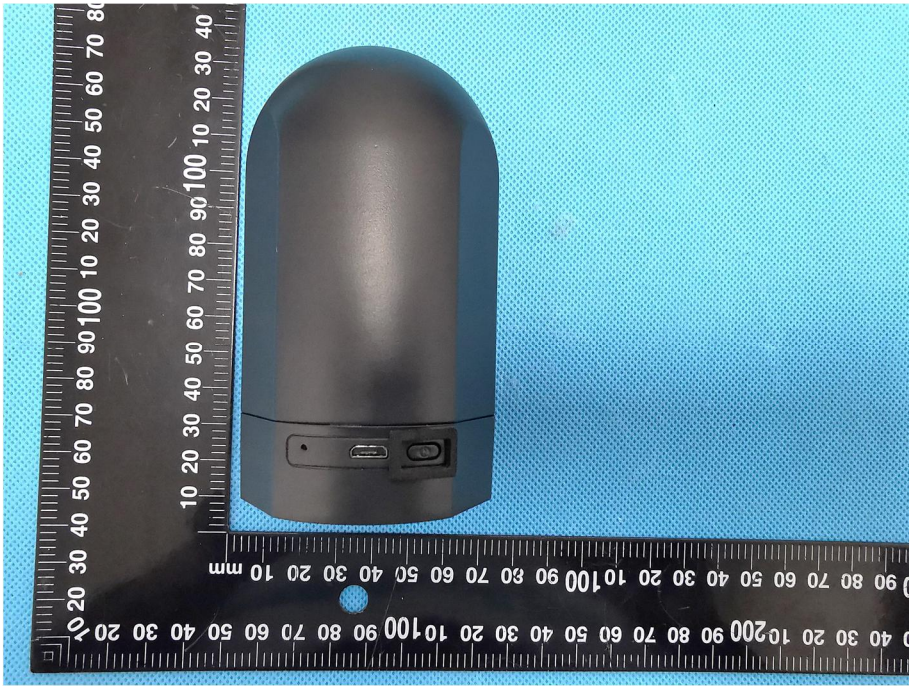
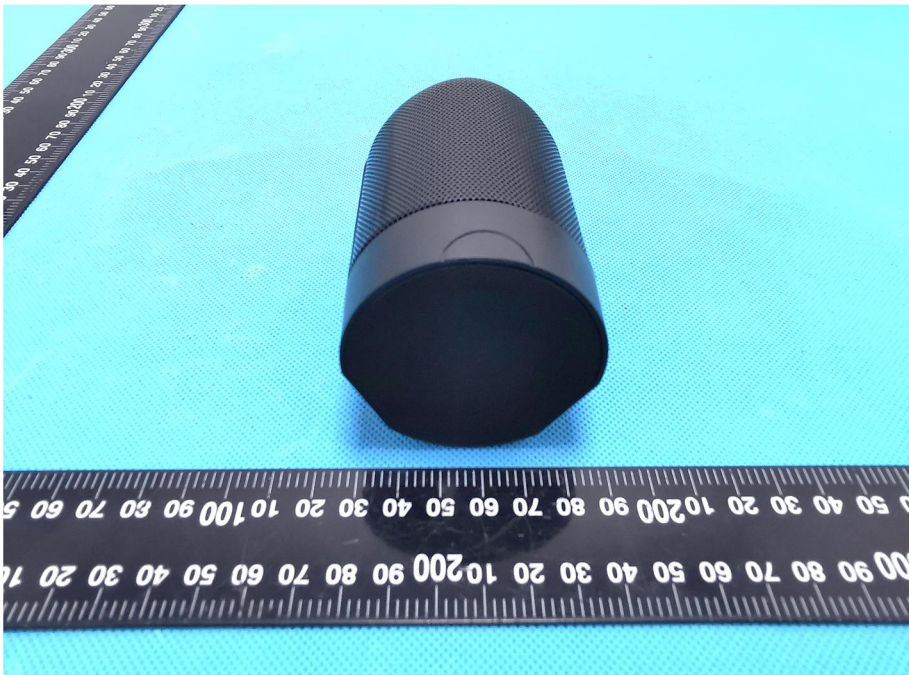


EXHIBIT 2 - EUT EXTERNAL PHOTOGRAPHS





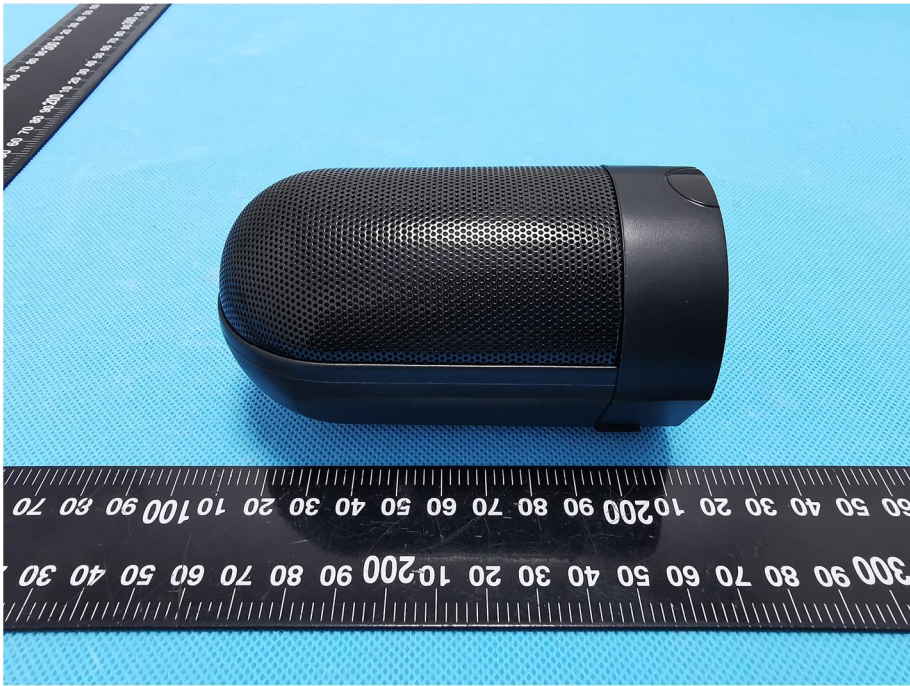

<p>EUT View 5</p>	 A black, dome-shaped electronic device is shown from a top-down perspective. The device has a smooth, rounded top and a flat base. On the base, there is a small circular hole, a USB-C port, and a power button. The device is placed on a blue textured surface next to a black ruler with white markings. The ruler shows measurements in millimeters and centimeters.
<p>EUT View 6</p>	 A close-up view of the textured, cylindrical part of the device. The texture is a fine, woven mesh. The device is shown from a side perspective, resting on a blue textured surface. A black ruler with white markings is visible in the background, providing a scale for the device's dimensions.

EUT View 7

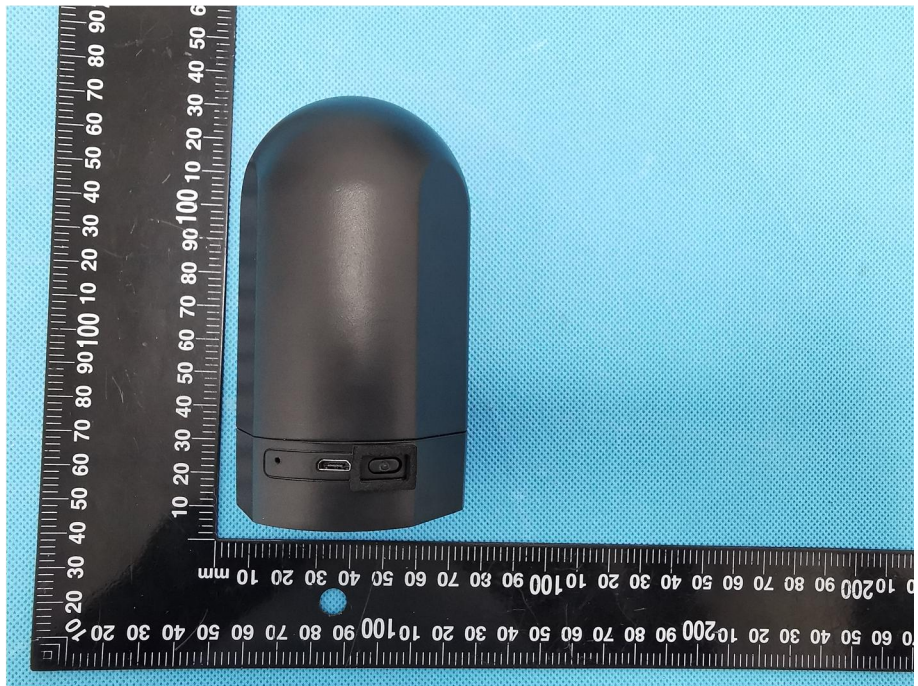


EUT View 8



<p>EUT View 9</p>	
<p>EUT View 10</p>	

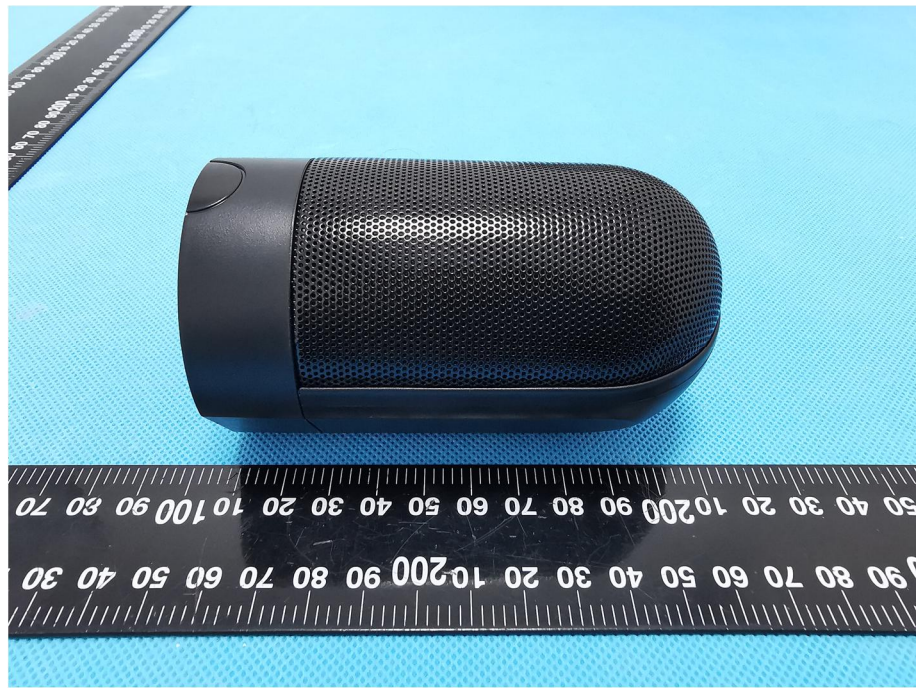
EUT View 11



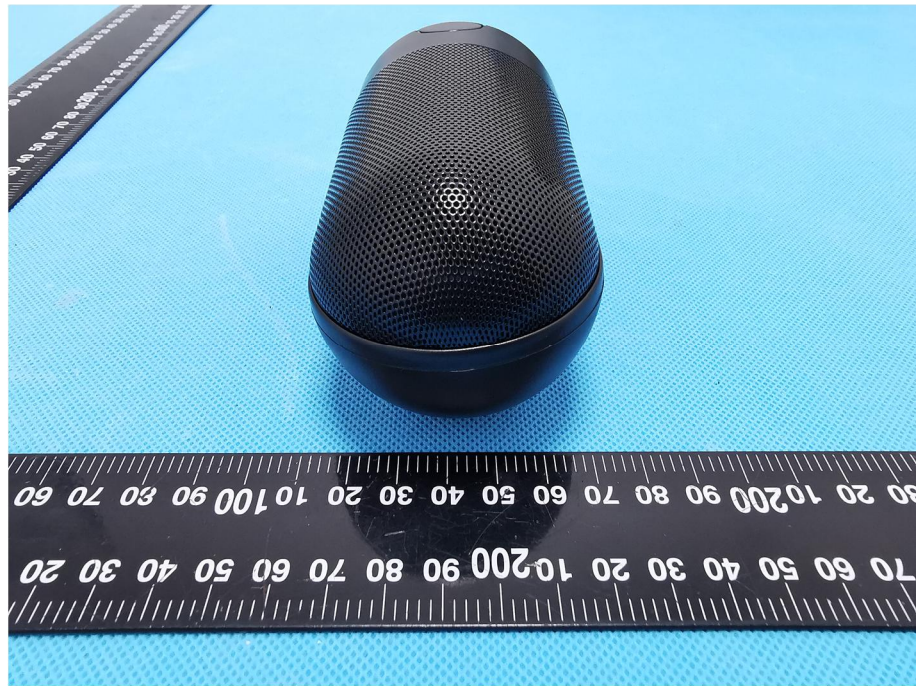
EUT View 12



EUT View 13



EUT View 14



EUT View 15

