

## System Performance Check-D2450V2-727

Frequency: 2450 MHz; Duty Cycle: 1:1; Room Ambient Temperature: 22.6°C; Liquid Temperature: 22.8°C  
Medium parameters used:  $f = 2450$  MHz;  $\sigma = 1.878$  S/m;  $\epsilon_r = 39.776$ ;  $\rho = 1000$  kg/m<sup>3</sup>

DASY5 Configuration:

- Area Scan Setting: Find Secondary Maximum Within: 2.0 dB and with a peak SAR value greater than 0.0012W/kg
- Electronics: DAE4 Sn877; Calibrated: 2022/4/28
- Probe: EX3DV4 - SN3665; ConvF(7.28, 7.28, 7.28) @ 2450 MHz; Calibrated: 2022/8/28
- Sensor-Surface: 2mm (Mechanical Surface Detection)
- Phantom: ELI

**Head/Pin=250mW/Area Scan (81x81x1):** Interpolated grid: dx=1.200 mm, dy=1.200 mm  
Maximum value of SAR (interpolated) = 18.5 W/kg

**Head/Pin=250mW/Zoom Scan (7x7x7)/Cube 0:** Measurement grid: dx=5mm, dy=5mm, dz=5mm

Reference Value = 100.6 V/m; Power Drift = -0.06 dB

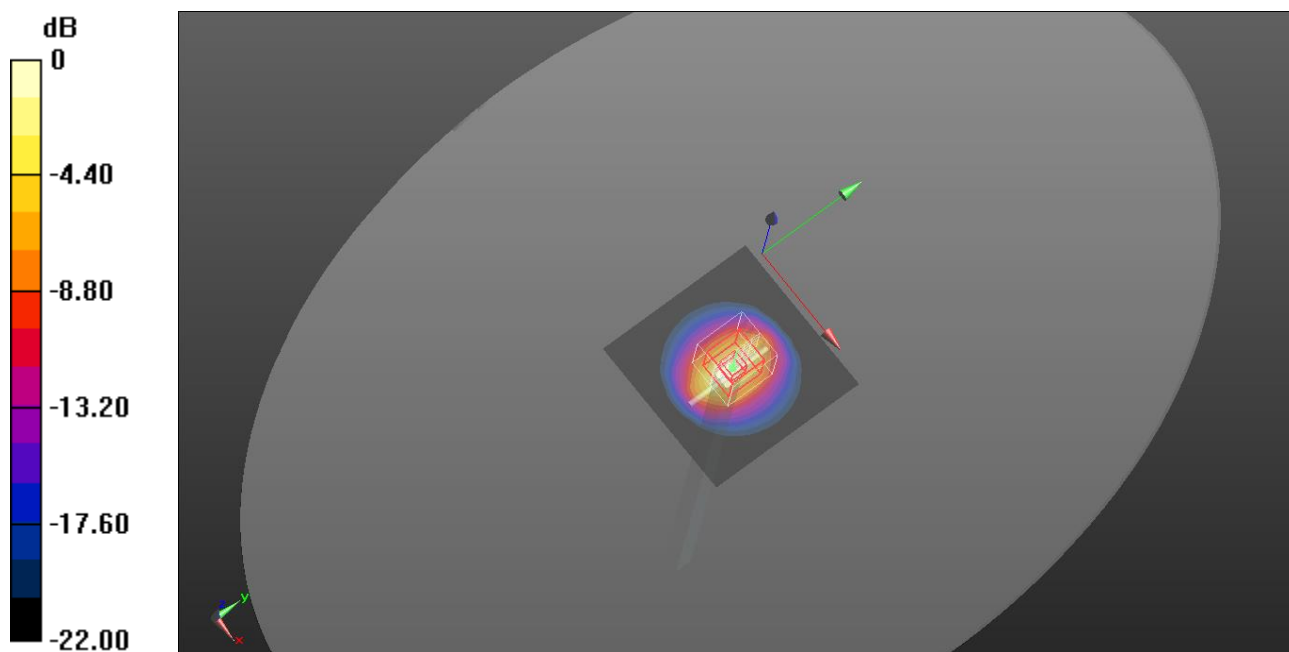
Peak SAR (extrapolated) = 29.5 W/kg

**SAR(1 g) = 14.1 W/kg; SAR(10 g) = 6.55 W/kg**

Smallest distance from peaks to all points 3 dB below = 9 mm

Ratio of SAR at M2 to SAR at M1 = 48.5%

Maximum value of SAR (measured) = 21.8 W/kg



0 dB = 21.8 W/kg = 13.38 dBW/kg

## System Performance Check-D5GHzV2-1023-5750

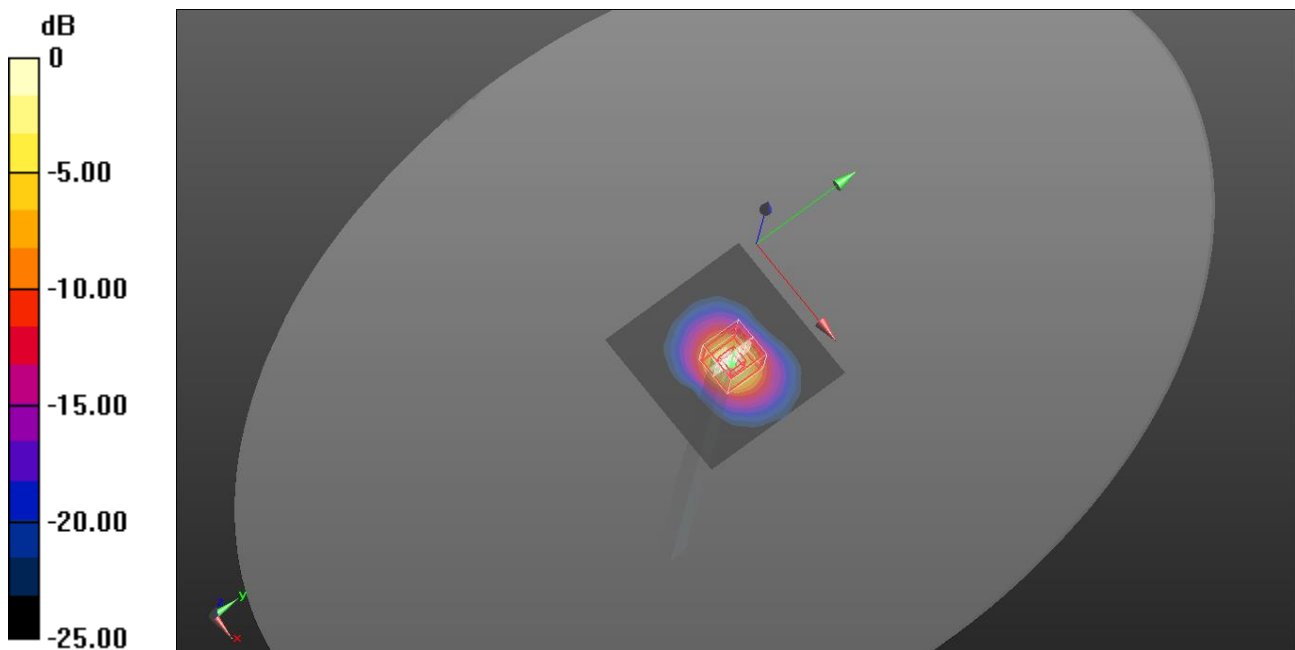
Frequency: 5750 MHz; Duty Cycle: 1:1; Room Ambient Temperature: 22.7°C; Liquid Temperature: 22.5°C  
Medium parameters used:  $f = 5750$  MHz;  $\sigma = 5.389$  S/m;  $\epsilon_r = 36.373$ ;  $\rho = 1000$  kg/m<sup>3</sup>

DASY5 Configuration:

- Area Scan Setting: Find Secondary Maximum Within: 2.0 dB and with a peak SAR value greater than 0.0012W/kg
- Electronics: DAE4 Sn877; Calibrated: 2022/4/28
- Probe: EX3DV4 - SN3665; ConvF(5.04, 5.04, 5.04) @ 5750 MHz; Calibrated: 2022/8/28
- Sensor-Surface: 2mm (Mechanical Surface Detection)
- Phantom: ELI

**Head/Pin=100mW/Area Scan (91x91x1):** Interpolated grid: dx=1.000 mm, dy=1.000 mm  
Maximum value of SAR (interpolated) = 17.4 W/kg

**Head/Pin=100mW/Zoom Scan (7x7x12)/Cube 0:** Measurement grid: dx=4mm, dy=4mm, dz=2mm  
Reference Value = 57.51 V/m; Power Drift = -0.17 dB  
Peak SAR (extrapolated) = 37.5 W/kg  
**SAR(1 g) = 8.4 W/kg; SAR(10 g) = 2.4 W/kg**  
Smallest distance from peaks to all points 3 dB below = 7.5 mm  
Ratio of SAR at M2 to SAR at M1 = 51.6%  
Maximum value of SAR (measured) = 17.7 W/kg



0 dB = 17.7 W/kg = 12.48 dBW/kg