

System Performance Check-D2450V2-727

Frequency: 2450 MHz; Duty Cycle: 1:1; Room Ambient Temperature: 22.1°C; Liquid Temperature: 22.4°C
Medium parameters used: $f = 2450$ MHz; $\sigma = 1.794$ S/m; $\epsilon_r = 40.307$; $\rho = 1000$ kg/m³

DASY5 Configuration:

- Area Scan Setting: Find Secondary Maximum Within: 2.0 dB and with a peak SAR value greater than 0.0012W/kg
- Electronics: DAE4 Sn877; Calibrated: 2022/4/28
- Probe: EX3DV4 - SN3665; ConvF(7.28, 7.28, 7.28) @ 2450 MHz; Calibrated: 2022/8/28
- Sensor-Surface: 2mm (Mechanical Surface Detection)
- Phantom: ELI

Head/Pin=250mW/Area Scan (81x81x1): Interpolated grid: dx=1.200 mm, dy=1.200 mm
Maximum value of SAR (interpolated) = 21.3 W/kg

Head/Pin=250mW/Zoom Scan (7x7x7)/Cube 0: Measurement grid: dx=5mm, dy=5mm, dz=5mm

Reference Value = 109.9 V/m; Power Drift = 0.06 dB

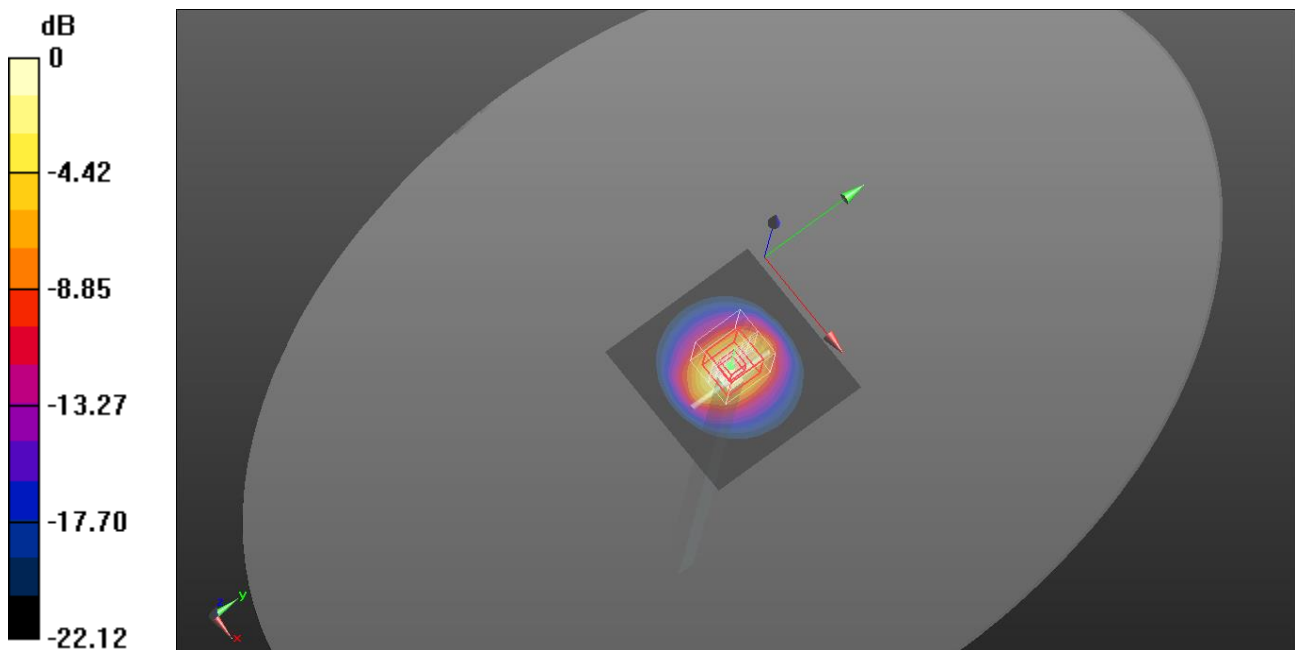
Peak SAR (extrapolated) = 29.0 W/kg

SAR(1 g) = 14 W/kg; SAR(10 g) = 6.49 W/kg

Smallest distance from peaks to all points 3 dB below = 9 mm

Ratio of SAR at M2 to SAR at M1 = 48.6%

Maximum value of SAR (measured) = 21.4 W/kg



0 dB = 21.4 W/kg = 13.30 dBW/kg

System Performance Check-D5GHzV2-1023-5750

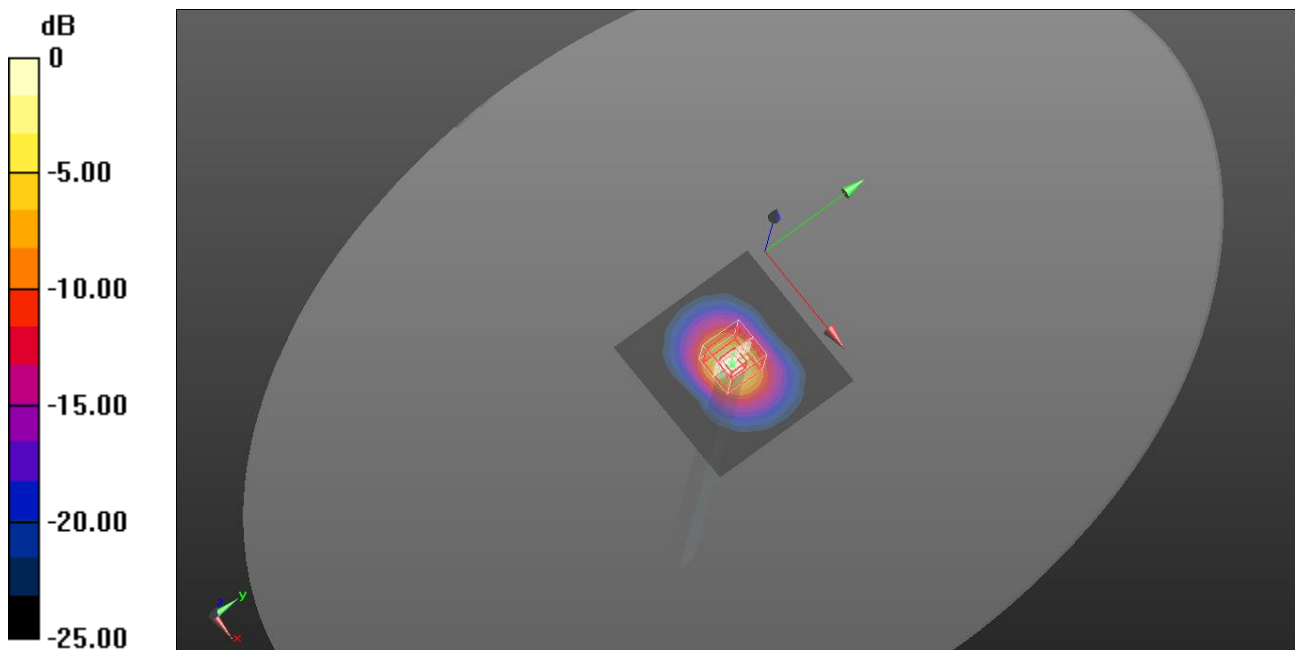
Frequency: 5750 MHz; Duty Cycle: 1:1; Room Ambient Temperature: 22.3°C; Liquid Temperature: 22.7°C
Medium parameters used: $f = 5750 \text{ MHz}$; $\sigma = 5.309 \text{ S/m}$; $\epsilon_r = 35.922$; $\rho = 1000 \text{ kg/m}^3$

DASY5 Configuration:

- Area Scan Setting: Find Secondary Maximum Within: 2.0 dB and with a peak SAR value greater than 0.0012W/kg
- Electronics: DAE4 Sn877; Calibrated: 2022/4/28
- Probe: EX3DV4 - SN3665; ConvF(5.04, 5.04, 5.04) @ 5750 MHz; Calibrated: 2022/8/28
- Sensor-Surface: 2mm (Mechanical Surface Detection)
- Phantom: ELI

Head/Pin=100mW/Area Scan (91x91x1): Interpolated grid: $dx=1.000 \text{ mm}$, $dy=1.000 \text{ mm}$
Maximum value of SAR (interpolated) = 16.6 W/kg

Head/Pin=100mW/Zoom Scan (7x7x12)/Cube 0: Measurement grid: $dx=4\text{mm}$, $dy=4\text{mm}$, $dz=2\text{mm}$
Reference Value = 61.28 V/m; Power Drift = -0.06 dB
Peak SAR (extrapolated) = 36.3 W/kg
SAR(1 g) = 8.39 W/kg; SAR(10 g) = 2.44 W/kg
Smallest distance from peaks to all points 3 dB below = 7.9 mm
Ratio of SAR at M2 to SAR at M1 = 52.3%
Maximum value of SAR (measured) = 17.5 W/kg



0 dB = 17.5 W/kg = 12.43 dBW/kg