



REPORT No.: SZ22090213S01

Annex C Plots of System Performance Check

System Check_2450MHz_Head

Communication System: UID 0, CW (0); Frequency: 2450 MHz; Duty Cycle: 1:1

Medium: HSL_2450 Medium parameters used: $f = 2450$ MHz; $\sigma = 1.864$ S/m; $\epsilon_r = 39.566$; $\rho = 1000$ kg/m³

Ambient Temperature : 23.2 °C; Liquid Temperature : 22.2 °C

DASY5 Configuration:

- Probe: EX3DV4 - SN7608; ConvF(7.42, 7.42, 7.42) @ 2450 MHz; Calibrated: 2022.01.12
- Sensor-Surface: 2mm (Mechanical Surface Detection)
- Electronics: DAE4 Sn1643; Calibrated: 2021.12.30
- Phantom: ELI V8.0 (20deg probe tilt); Type: QD OVA 004 Ax; Serial: xxxx
- Measurement SW: DASY52, Version 52.10 (4); SEMCAD X Version 14.6.14 (7483)

CW2450/Area Scan (71x71x1): Interpolated grid: dx=1.200 mm, dy=1.200 mm

Maximum value of SAR (interpolated) = 21.4 W/kg

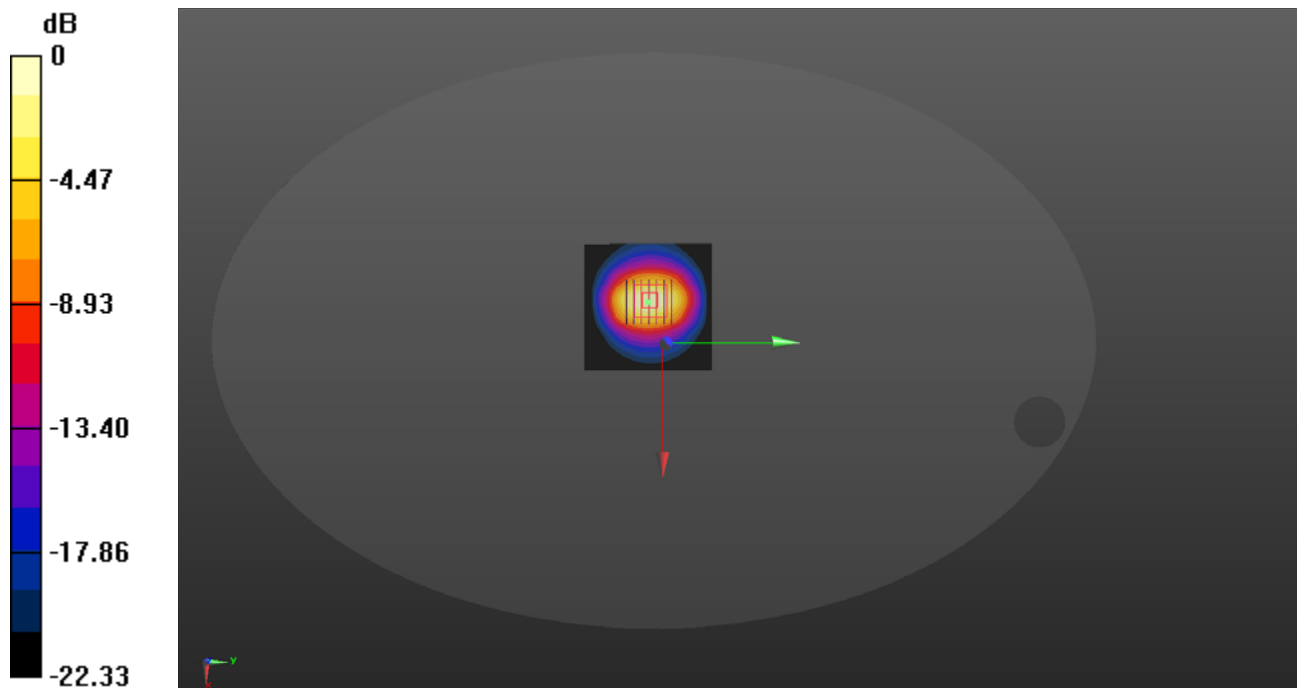
CW2450/Zoom Scan (7x7x7)/Cube 0: Measurement grid: dx=5mm, dy=5mm, dz=5mm

Reference Value = 92.80 V/m; Power Drift = -0.07 dB

Peak SAR (extrapolated) = 27.9 W/kg

SAR(1 g) = 12.84 W/kg; SAR(10 g) = 5.74 W/kg

Maximum value of SAR (measured) = 20.6 W/kg



0 dB = 20.6 W/kg

System Check_5250MHz_Head

Communication System: UID 0, CW (0); Frequency: 5250 MHz; Duty Cycle: 1:1

Medium: HSL_5250 Medium parameters used: $f = 5250$ MHz; $\sigma = 4.671$ S/m; $\epsilon_r = 36.192$; $\rho = 1000$ kg/m³

Ambient Temperature : 23.2 °C; Liquid Temperature : 22.3 °C

DASY5 Configuration:

- Probe: EX3DV4 - SN7608; ConvF(5.16, 5.16, 5.16) @ 5250 MHz; Calibrated: 2022.01.12
- Sensor-Surface: 2mm (Mechanical Surface Detection)
- Electronics: DAE4 Sn1643; Calibrated: 2021.12.30
- Phantom: ELI V8.0 (20deg probe tilt); Type: QD OVA 004 Ax; Serial: xxxx
- Measurement SW: DASY52, Version 52.10 (4); SEMCAD X Version 14.6.14 (7483)

CW5250/Area Scan (91x91x1): Interpolated grid: dx=1.000 mm, dy=1.000 mm

Maximum value of SAR (interpolated) = 18.8 W/kg

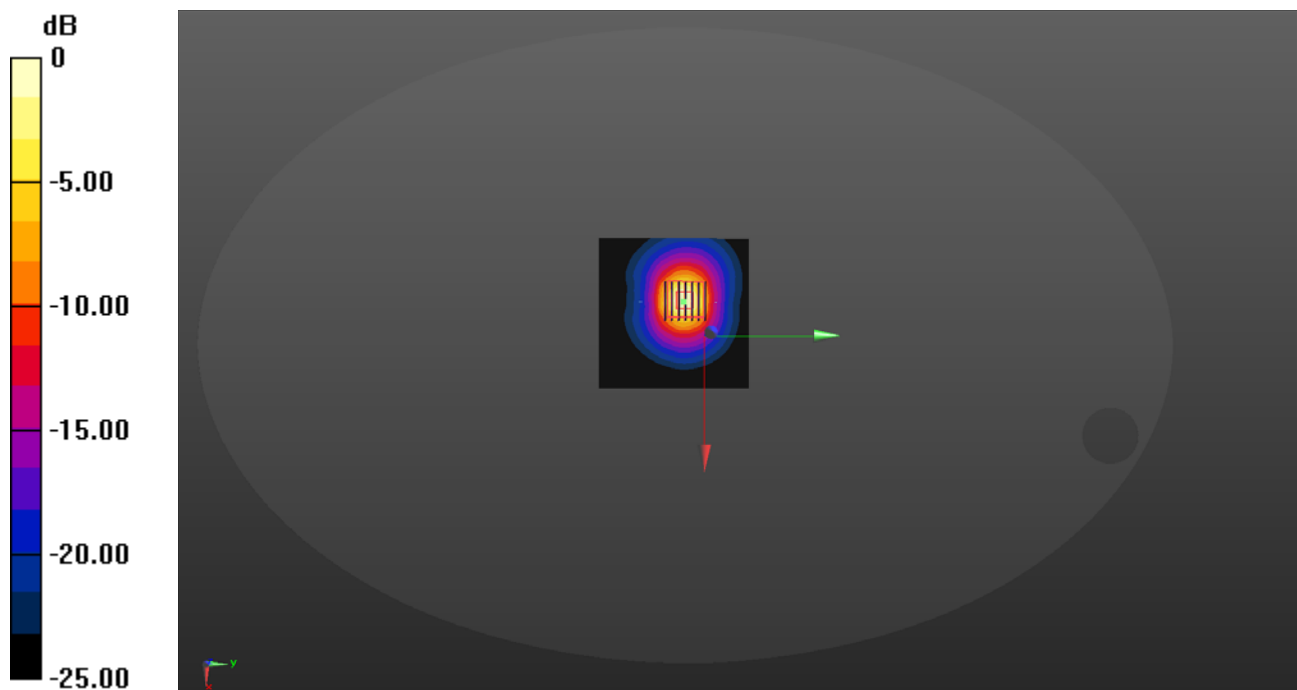
CW5250/Zoom Scan (7x7x13)/Cube 0: Measurement grid: dx=4mm, dy=4mm, dz=2mm

Reference Value = 41.64 V/m; Power Drift = -0.01 dB

Peak SAR (extrapolated) = 33.7 W/kg

SAR(1 g) = 7.41 W/kg; SAR(10 g) = 2.22 W/kg

Maximum value of SAR (measured) = 16.3 W/kg



0 dB = 16.3 W/kg

System Check_5600MHz_Head

Communication System: UID 0, CW (0); Frequency: 5600 MHz; Duty Cycle: 1:1

Medium: HSL_5600 Medium parameters used: $f = 5600$ MHz; $\sigma = 5.132$ S/m; $\epsilon_r = 35.441$; $\rho = 1000$ kg/m³

Ambient Temperature : 23.2 °C; Liquid Temperature : 22.1 °C

DASY5 Configuration:

- Probe: EX3DV4 - SN7608; ConvF(4.74, 4.74, 4.74) @ 5600 MHz; Calibrated: 2022.01.12
- Sensor-Surface: 2mm (Mechanical Surface Detection)
- Electronics: DAE4 Sn1643; Calibrated: 2021.12.30
- Phantom: ELI V8.0 (20deg probe tilt); Type: QD OVA 004 Ax; Serial: xxxx
- Measurement SW: DASY52, Version 52.10 (4); SEMCAD X Version 14.6.14 (7483)

CW5600/Area Scan (101x101x1): Interpolated grid: dx=1.000 mm, dy=1.000 mm

Maximum value of SAR (interpolated) = 15.6 W/kg

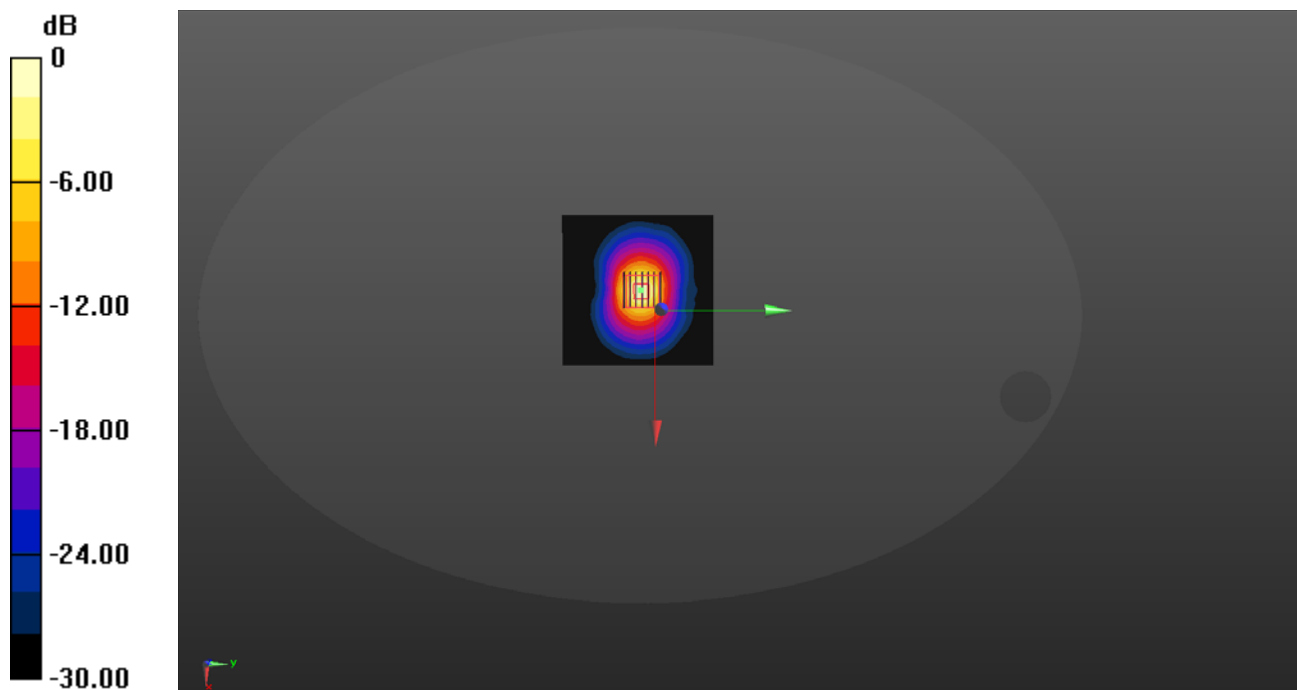
CW5600/Zoom Scan (7x7x13)/Cube 0: Measurement grid: dx=4mm, dy=4mm, dz=2mm

Reference Value = 40.55 V/m; Power Drift = -0.05 dB

Peak SAR (extrapolated) = 31.0 W/kg

SAR(1 g) = 7.59 W/kg; SAR(10 g) = 2.31 W/kg

Maximum value of SAR (measured) = 15.6 W/kg



0 dB = 15.6 W/kg

System Check_5750MHz_Head

Communication System: UID 0, CW (0); Frequency: 5800 MHz; Duty Cycle: 1:1

Medium: HSL_5750 Medium parameters used: $f = 5800$ MHz; $\sigma = 5.333$ S/m; $\epsilon_r = 36.147$; $\rho = 1000$ kg/m³

Ambient Temperature : 23.2 °C; Liquid Temperature : 22.1 °C

DASY5 Configuration:

- Probe: EX3DV4 - SN3823; ConvF(4.45, 4.45, 4.45) @ 5800 MHz; Calibrated: 2022.03.04
- Sensor-Surface: 2mm (Mechanical Surface Detection)
- Electronics: DAE4 Sn1643; Calibrated: 2021.12.30
- Phantom: ELI V8.0 (20deg probe tilt); Type: QD OVA 004 Ax; Serial: xxxx
- Measurement SW: DASY52, Version 52.10 (4); SEMCAD X Version 14.6.14 (7483)

CW5750/Area Scan (101x101x1): Interpolated grid: dx=1.000 mm, dy=1.000 mm

Maximum value of SAR (interpolated) = 20.5 W/kg

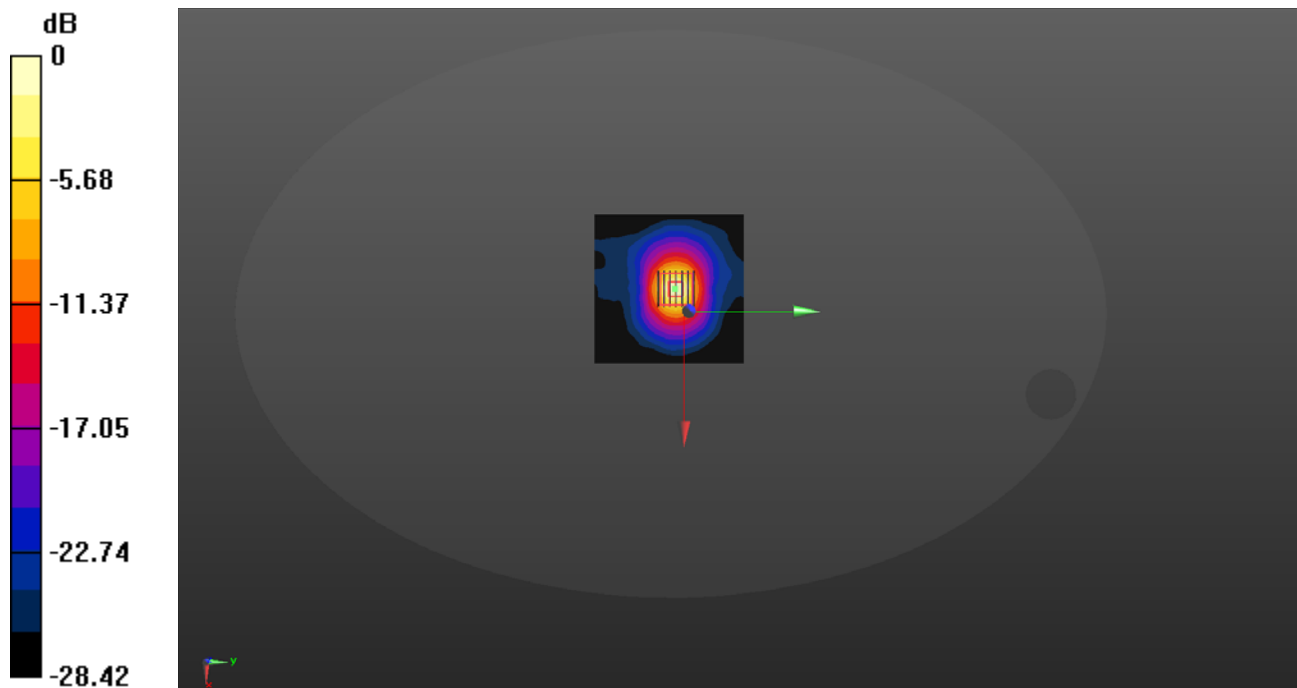
CW5750/Zoom Scan (7x7x13)/Cube 0: Measurement grid: dx=4mm, dy=4mm, dz=2mm

Reference Value = 39.78 V/m; Power Drift = 0.01 dB

Peak SAR (extrapolated) = 48.6 W/kg

SAR(1 g) = 7.81 W/kg; SAR(10 g) = 2.31 W/kg

Maximum value of SAR (measured) = 21.0 W/kg



0 dB = 21.0 W/kg