

深圳市亿圣邦科技有限公司 样品承认书

SPECIFICATION FOR APPROVAL

公司名称 (客户填写) : 深圳市迈迪杰电子科技有限公司

物料代码 (客户填写) : 2.18.0223

规格型号 (客户填写) : N116FJL01

承认日期 (客户填写) : _____

供应商名称 (SLK填写) : 深圳市亿圣邦科技有限公司

供应商规格型号 (SLK填写) : WIFIMAIN:SLK-MDJ-2025A-R-220IV-B

承 认 签 章

供 应 商 承 认 (SLK 填写栏)			深圳市迈迪杰电子科技有限公司		
工 程 师	审 核	批 准	工 程 师	审 核	批 准
范新竹	黄震	林美财			
盖章签署			盖章签署		
日 期	2022-10-2		日 期		
批示: <input type="checkbox"/> 接受 <input type="checkbox"/> 有条件接受					
备注 (客户填写):					

供应商名称: 深圳市亿圣邦科技有限公司

供应商地址: 深圳市宝安区西乡街道南昌社区前湾硬科技产业园 C 栋 101

电 话: 18025305599

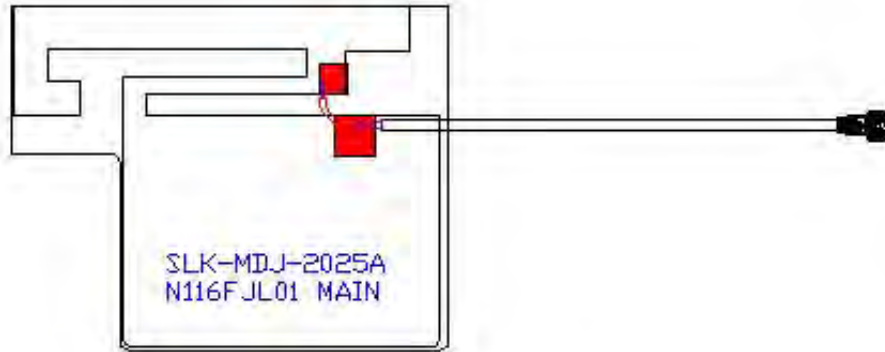
传 真: 0769-82553116

WIFI MAIN Antenna (2025A)

1. Explanation of Product number :

S L K - M D J - 2 0 2 5 A - R - 2 2 0 I V - B

1 2 3 4 5



Product Code:

(1) Customer:

MDJ:迈迪杰

(2) Project:

2025A: SLK-MDJ-2025A(WIFI MAIN antenna)

(3) Welding Position

R:Right

(4) Cable Length:

220IV: 220*1.13MM 4代端子

(5)Cable Color

B: Black

2. Features

- *Stable and reliable in performances
- *Compact size
- *RoHS compliance

3. Applications

- * IEEE802.11 (a/b/g/n)
- * Hand-held devices when WIFI (802.11a/b/g/n) functions are needed

4. Description

Holy bond's FPC antenna series are specially designed for WIFI (802.11 a/b/g/n) applications. Based on Holy bond's proprietary design and processes, this FPC antenna has excellent stability and sensitivity to consistently provide high signal reception efficiency.

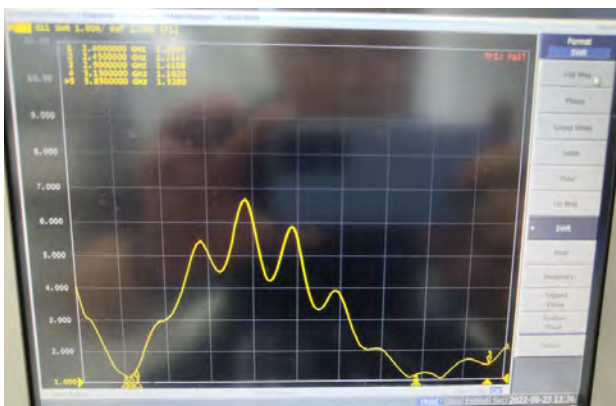
5. Electrical Specifications

5-1

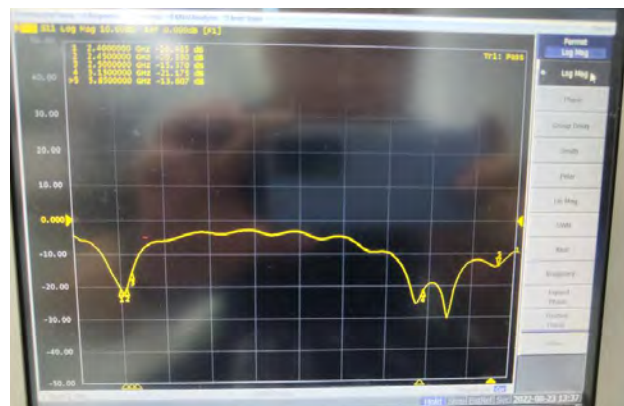
Characteristics	Specifications	Unit
Outline Dimensions	25.43x20.09x 0.12	mm
Center Frequency	2.4-2.5+5.15-5.85	GHz
Bandwidth(under-10dB return loss)	130min	MHz
VSWR	3max	

5-2.

VSWR



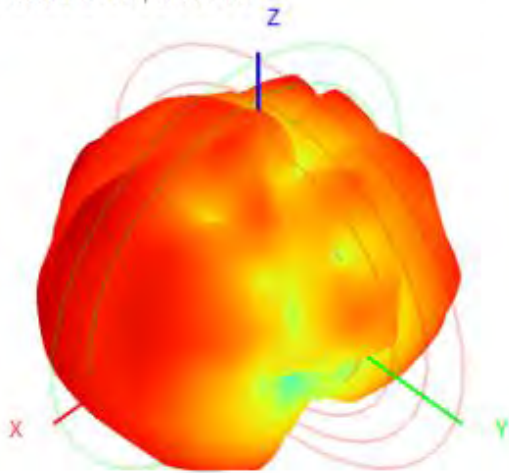
S11



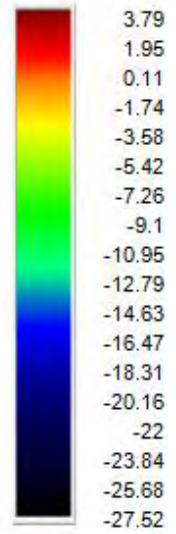
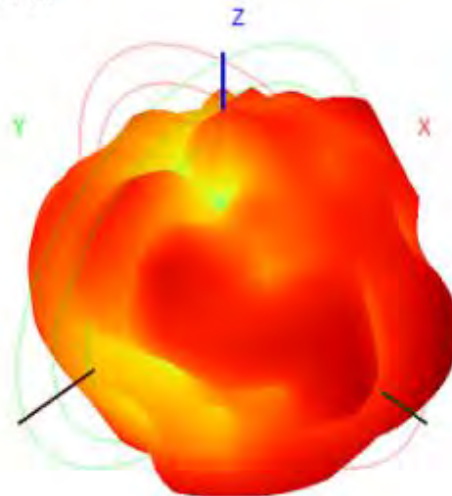
5-3.WIFI Antenna Gain/Efficiency/Radiation Pattern of 3D

Frequency (MHz)	2400.0	2410.0	2420.0	2430.0	2440.0	2450.0	2460.0	2470.0	2480.0	2490.0	2500.0	5150.0	5350.0	5500.0	5650.0	5850.0
Efficiency (dBi)	-2.89	-2.83	-2.87	-2.69	-2.68	-2.59	-2.52	-2.48	-2.57	-2.44	-2.32	-2.55	-1.96	-2.04	-1.77	-1.14
Gain (dBi)	3.31	3.25	3.36	3.55	3.66	3.79	3.99	3.67	3.41	3.48	3.65	3.25	4.68	4.89	5.63	7.48
Efficiency (%)	51.42	52.07	51.66	53.79	53.92	55.09	55.92	56.52	55.39	57.05	58.57	55.58	63.70	62.59	66.49	76.88

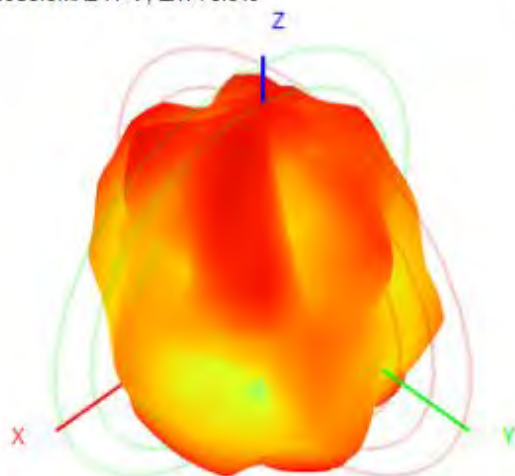
2450.0MHz H+V, Eff: 55.1%



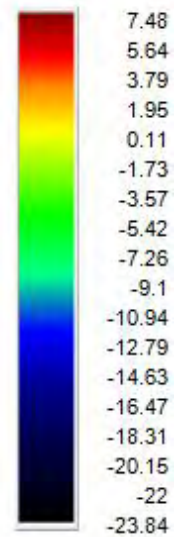
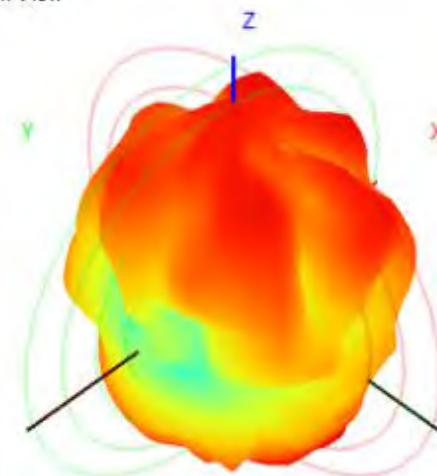
Back View



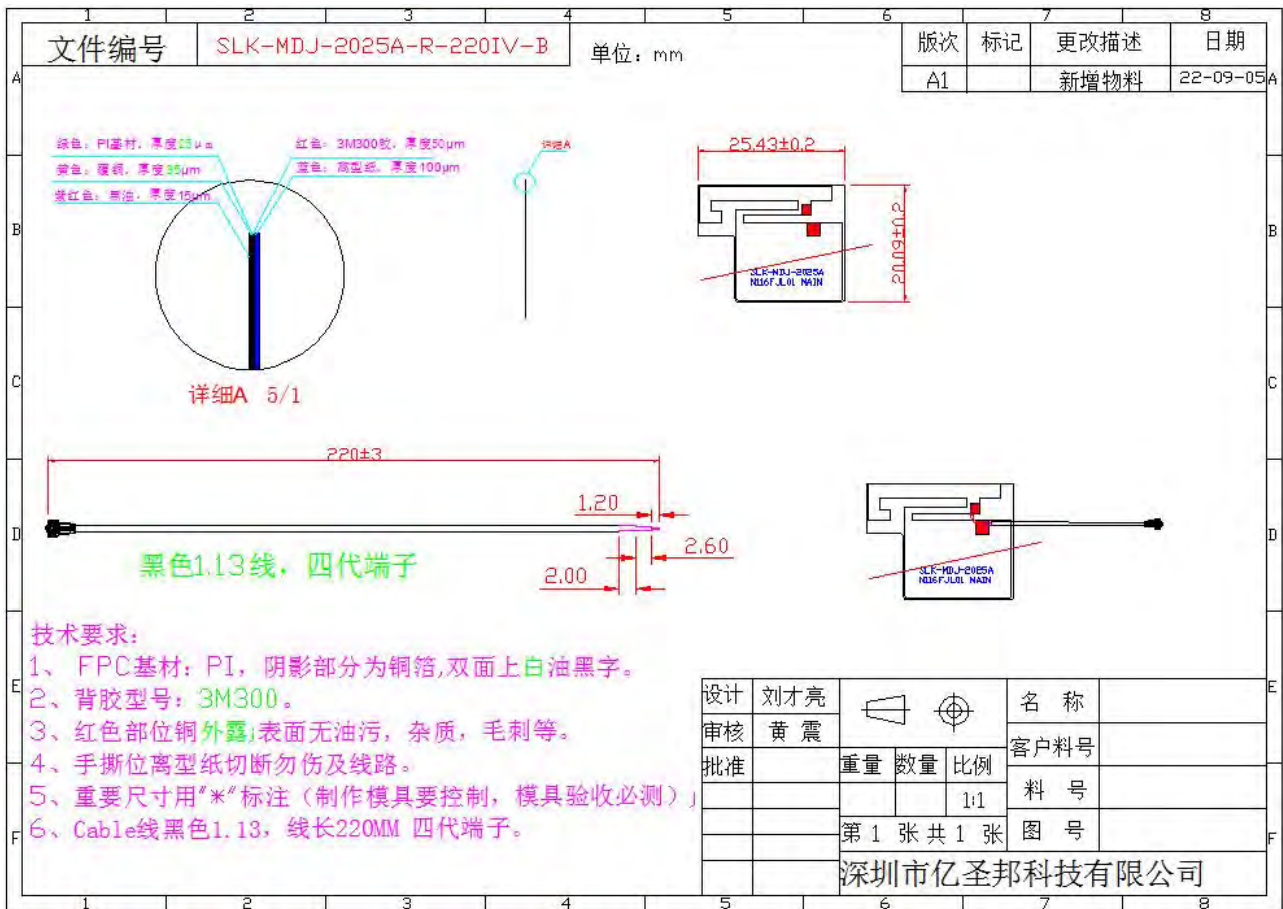
5850.0MHz H+V, Eff: 76.9%



Back View



6. Antenna Dimensions (unit: mm)



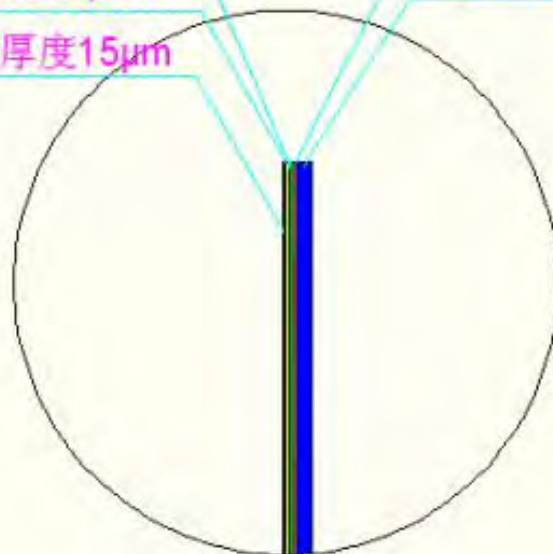
绿色: PI基材, 厚度25 μm

黄色: 覆铜, 厚度35 μm

紫红色: 黑油, 厚度15 μm

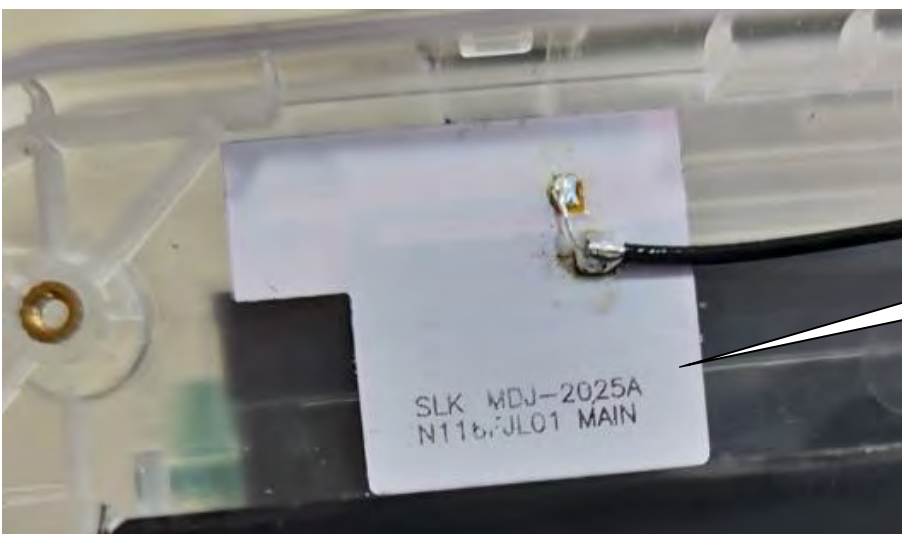
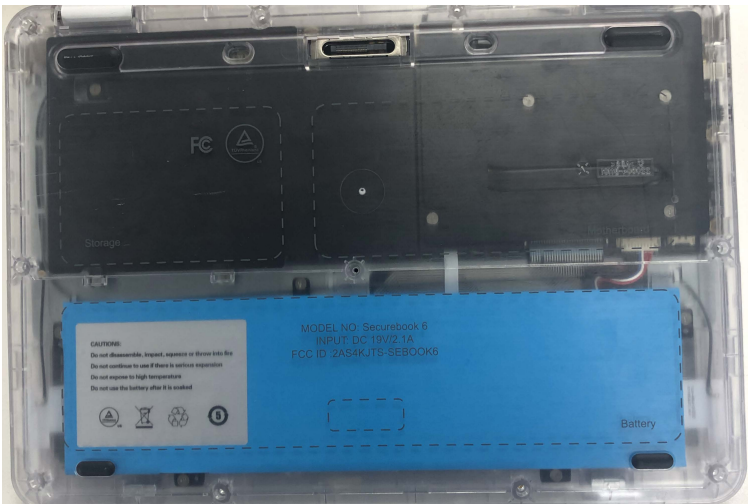
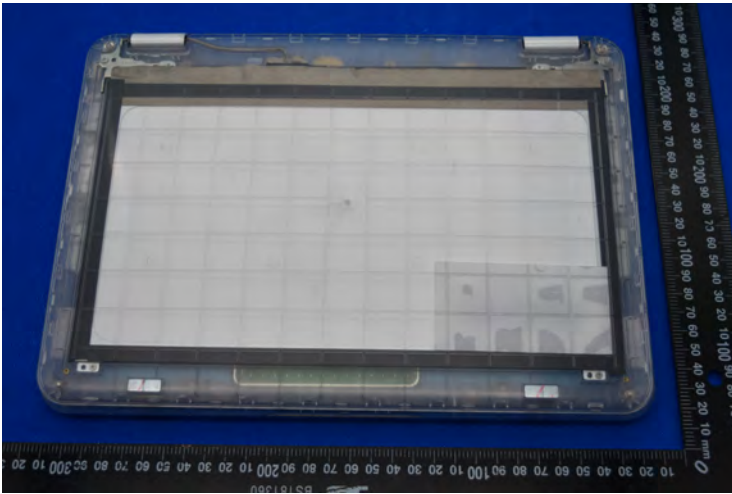
红色: 3M300胶, 厚度50 μm

蓝色: 离型纸, 厚度100 μm



详细A 5/1

7. Antenna Picture



WIFI MAIN 天线