

# Apitor

## User Guide

### Robot X

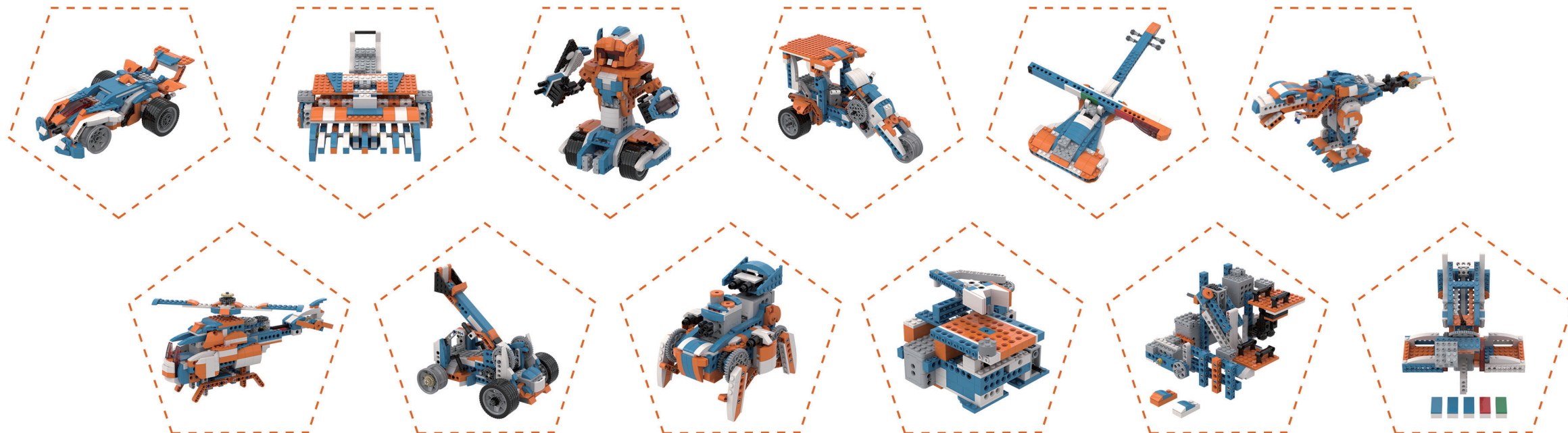
Educational Building Block Robot Kit  
Model No.: APR05

**AGES 8+**

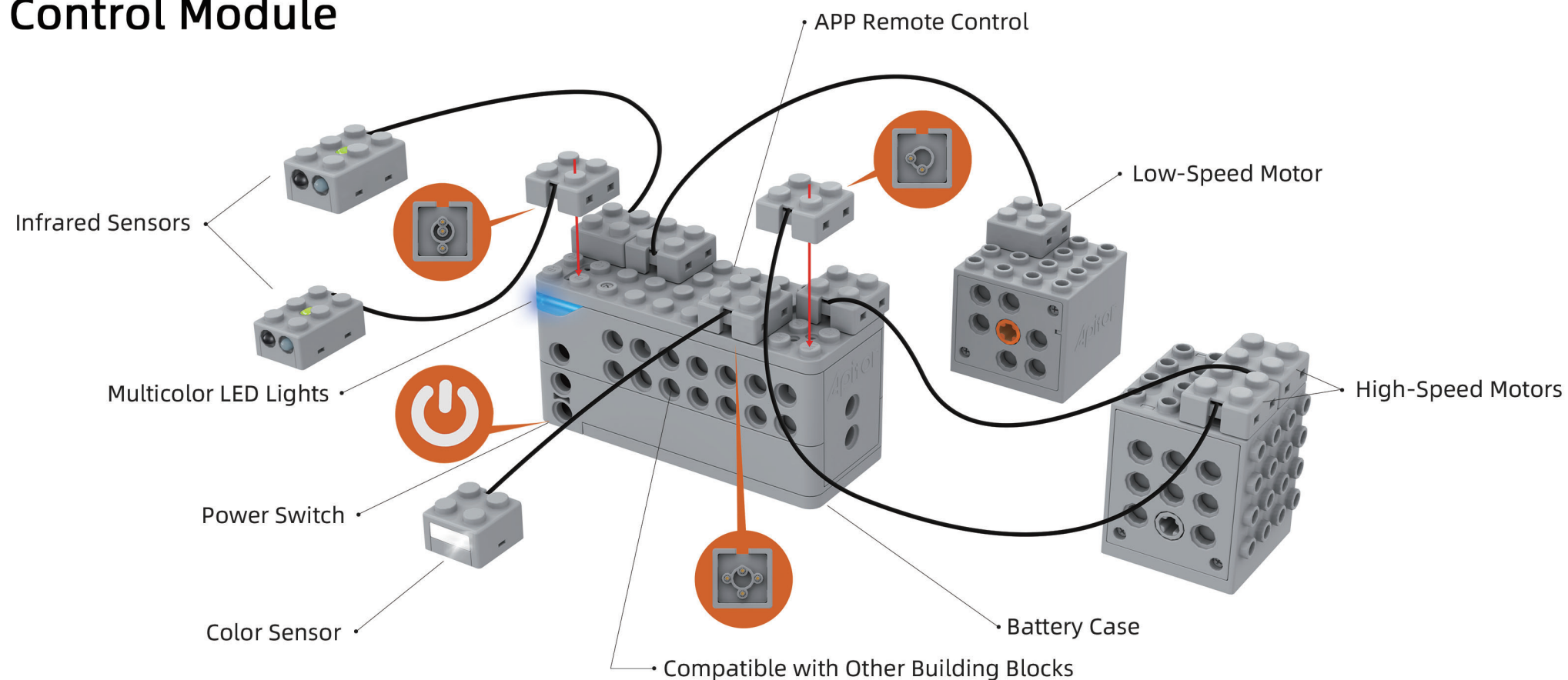
Support@apitor.com  
Apitor Technology Co.,Ltd.

## 1 About Apitor Robot X

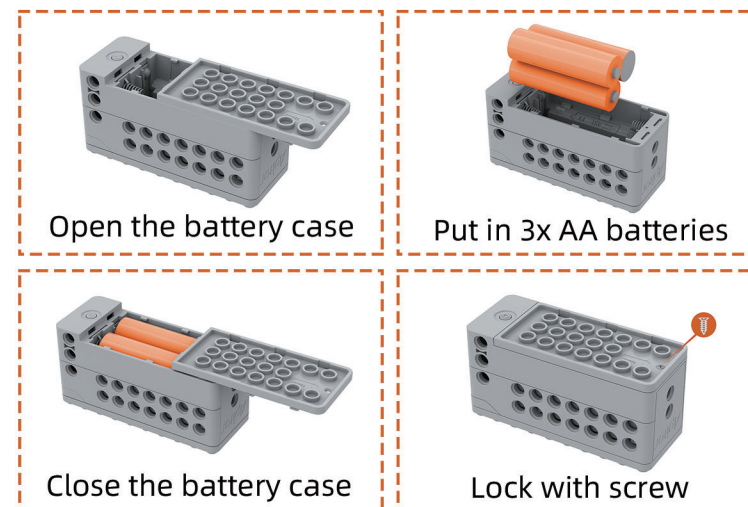
Apitor Robot X is born for fun and STEM education. It contains building blocks, motors and sensors. It can build up to 12 different pre-designed robots. It supports APP remote control and graphical coding. Everyone can build your own robot and enjoy STEM learning in a fun way.



## 2 Control Module



## 3 Battery Installation



### \* Instructions for Battery Installation

Non-rechargeable batteries can not be charged.

Rechargeable batteries should be charged under the supervision of an adult.

Batteries with different models, old and new batteries should not be mixed.

Exhausted batteries should be removed from the product.

This product does not contain battery.

Rechargeable batteries are to be removed from the toy before being charged.

Batteries are to be inserted with correct polarity.

The supply terminals are not to be short-circuited.

\* Bluetooth frequency: 2402-2480MHz, transmitting power < 0dBm.

\* Hereby, Apitor Technology Co., Ltd. declares that the radio equipment type APR05 is in compliance with Directive 2014/53/EU. The full text of the EU declaration of conformity is available at the following internet address: [www.apitor.com/conformity](http://www.apitor.com/conformity).

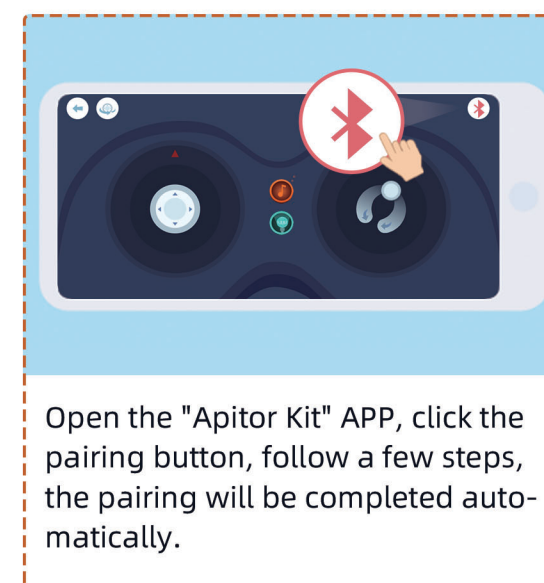
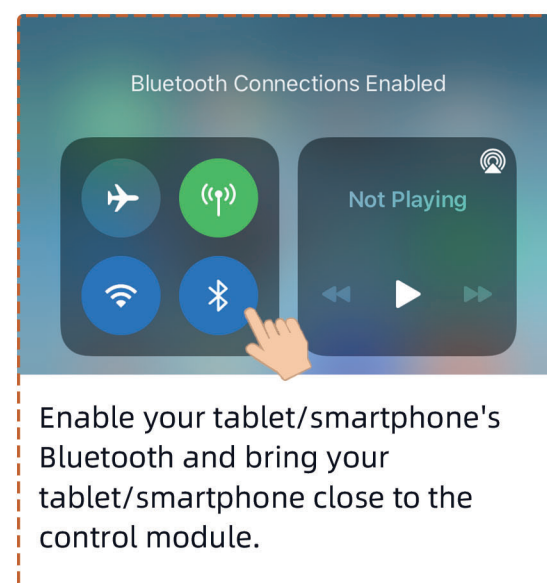
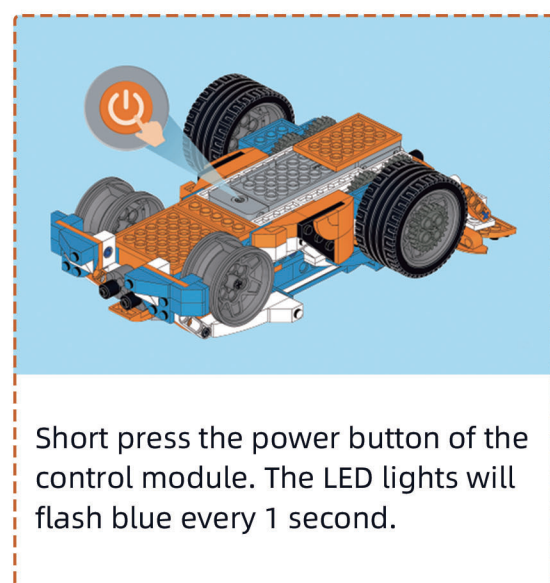
\* The instruction manual must be retained since it contains important information.



## 4 LED Status Indication

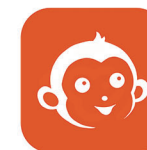
Status of Use	LED Status	Indication
After the control unit is powered on	Blue lights flash every 1 second.	Bluetooth is not connected.
	Blue lights are always on.	Bluetooth is connected.
During use, short press the power button	Red lights flash twice every 0.2 seconds.	Power off
While the control unit is powered on, press and hold the power button for 10 seconds	Red lights flash twice every 0.2 seconds.	Reset to factory defaults
During the control unit is powered on	Blue lights flash 3 times every 1 second, and then red lights flash 5 times every 1 second, only once.	Low battery indicator, need to replace new batteries.
During use	Red lights flash twice every 0.2 seconds, then power off.	The use of power is too large and the power of batteries is insufficient, the batteries need to be replaced or the power usage needs to be reduced.

## 6 Connect to Apitor Robot X



✱ Please don't connect to Apitor Robot X directly from the Bluetooth connection page of your tablet/smartphone. Please remember, always connect Apitor Robot X from the "Apitor Kit" APP.

## 5 Download and Install the APP



Download the APP by searching for "Apitor Kit" on the App Store and Google Play. When installing the APP, please allow all permission requests and enable "Location services" for Android required by the Bluetooth protocol.

OS requirements: Android 5 or higher, iOS 9 or higher.

- \* Apple, the Apple logo are trademarks of Apple Inc. App Store is a service mark of Apple Inc.
- \* iOS is a trademark or registered trademark of Cisco.
- \* Google, Android, Google Play and the Google Play logo are trademarks of Google LLC.

## 7 FAQ

Q: Why can't my tablet/smartphone connect to Apitor Robot X?

- A: 1. Please make sure that the OS version of your tablet/smartphone is Android 5 or higher, or iOS 9 or higher. If not, please upgrade your OS to the correct version.
2. Reinstall the APP, please allow all permission requests and enable "Location services" for Android required by the Bluetooth protocol.
3. Please don't connect to Apitor Robot X directly from the Bluetooth connection page of your tablet/smartphone. Please remember, always connect Apitor Robot X from the "Apitor Kit" APP.
4. Disable the Bluetooth function of all other tablet/smartphones previously connected to Apitor Robot X. Keep these tablet/smartphones away from Apitor Robot X.
5. Turn off the power of Apitor Robot X, and then turn it on again.
6. Enable your tablet/smartphone's Bluetooth and bring your tablet/smartphone close to the control module.
7. Open the APP and click the Bluetooth pairing button from the APP. Wait a few seconds and you will see the connection is successful.

If you have any other questions, please feel free to contact our technical support email: support@apitor.com. Please tell our technical support staff the brand, model no. and iOS/Android version of the tablet/smartphone you are using. If you can take some screenshots and email them to us, it will be very helpful for us to help you solve the problem.

Q: What should I do if there are missing blocks in the package?

- A: 1. You can use similar blocks from other manufacturers. Our blocks are fully compatible with most blocks on the market. Usually, this is the fastest solution.
2. If you can't find the compatible building blocks, please contact our technical support email: support@apitor.com, and tell our technical support staff which exact parts are missing. It will be most useful if you can send them some pictures of the missing blocks. They will give you a solution.

Bluetooth frequency: 2402MHz-2480MHz, transmitting power < 0dBm

Manufacturer name: Apitor Technology Co., Ltd.

Manufacturer address: Room 1503, Unit 1, Block 2 Area 6, Taoyuanju, Xixiang, Baoan, Shenzhen 518000, China

Importer name: X-media USA Inc.

Importer address: 307 Paseo Tesoro, Walnut, CA 91789

### **FCC Regulatory Compliance**

This device complies with Part 15 of the FCC Rules. Operation is subject to the following two conditions: (1) this device may not cause harmful interference, and (2) this device must accept any interference received, including interference that may cause undesired operation.

Note: This equipment has been tested and found to comply with the limits for a Class B digital device, pursuant to Part 15 of the FCC Rules. These limits are designed to provide reasonable protection against harmful interference in a residential installation. This equipment generates, uses and can radiate radio frequency energy and, if not installed and used in accordance with the instructions, may cause harmful interference to radio communications. However, there is no guarantee that interference will not occur in a particular installation.

If this equipment does cause harmful interference to radio or television reception, which can be determined by turning the equipment off and on, the user is encouraged to try to correct the interference by one or more of the following measures:

- Reorient or relocate the receiving antenna.
- Increase the separation between the equipment and receiver.
- Connect the equipment into an outlet on a circuit different from that to which the receiver is connected.
- Consult the dealer or an experienced radio/TV technician for help.

Caution: changes or modifications not expressly approved by the party responsible for compliance could void the user's authority to operate the equipment.

This equipment complies with FCC radiation exposure limits set forth for an uncontrolled environment. This transmitter must not be co-located or operating in conjunction with any other antenna or transmitter.