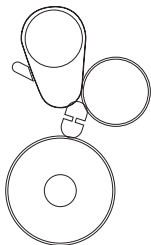


USER MANUAL



iSearching



This product is a Bluetooth wireless device running the "iSearching" application. Before using it, you need to place the things that are easily lost with the product together. In the effective Bluetooth connection range (About 15meters/45f no barrier) , you can make the product beeps to find your things with your phone's app, you can double-click the product's button to cause your phone ring, and you can use the product to take photos. (With these features, you can find anything you want to find with ease. Such as keys, bags, remote control, wallet, mobile phone...)

When the product is out of range with your phone's Bluetooth, the alert will be triggered in both of the product and your phone, and last lost location will be marked on the map in the "iSearching" app. (To use this feature, you need to open 'Phone Alarm While Lost function' in the setting. With these features, your belongings and mobile phone will be protected in a specified range. If you forget to take your belongings, you will be reminded with your phone alert. If your phone is left behind, you will be reminded with the tracker's alert.)

In order to use the product, your device will need both of the following:

1. Bluetooth4.0
2. IOS11.0 and higher, Android 8.0 and higher.

APP DOWNLOAD AND INSTALL

1. You can download the 'iSearching' APP from the APP Store.
2. You can download the 'iSearching' APP from the Google Play.

POWER ON/OFF



Power On:

Hold down the tracker's function button for at least 3 seconds
You will hear two beeps, the tracker is now powered on.

Power Off:

Hold down the tracker function button for at least 3 seconds.
You will hear one long single beep. The tracker is now powered off.

Apple, APP Store, iPhone, iPad and iPod touch are trademarks of Apple Inc. Google play is a trademark of Google Inc. All other trademarks are properties of their respective owners.

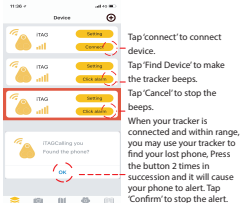
This guide is for your benefit to make sure you fully understand how to use the product.

START APP

Open the app on your smart phone. Please take time to review the tutorial page. Please click "Allow" of the notifications of the APP.



Tap here or drop-down interface to add devices

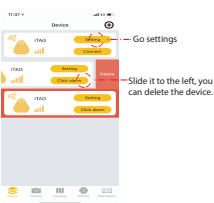


Tap 'connect' to connect device.

Tap 'Find Device' to make the tracker beeps.

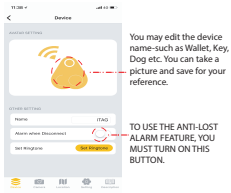
Tap 'Cancel' to stop the beeps.

When your tracker is connected and within range, you may use your tracker to find your lost phone, Press the button 2 times in succession and it will cause your phone to alert. Tap 'Confirm' to stop the alert.



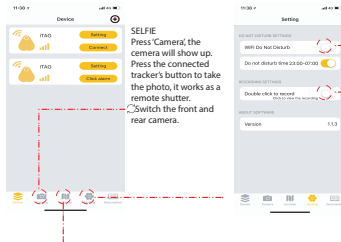
Go settings

Slide it to the left, you can delete the device.

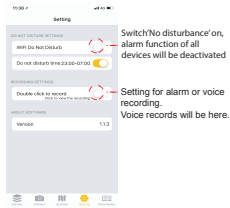


You may edit the device name-such as Wallet, Key, Dog etc. You can take a picture and save for your reference.

TO USE THE ANTI-LOST ALARM FEATURE, YOU MUST TURN ON THIS BUTTON.



SELFIE
Press 'Camera', the camera will show up. Press the connected tracker's button to take the photo, it works as a remote shutter. Switch the front and rear camera.



Switch 'No disturbance' on, alarm function of all devices will be deactivated

Setting for alarm or voice recording. Voice records will be here.

Location:

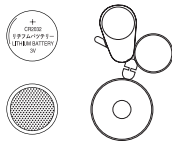
Location History: When you park your car, press the tracker's button, it will mark your current location on the map. Press the location history you will find your vehicle.

Lost History: If you lost your tracker, you can find it in 'Lost History'. A pin-drop will be marked automaticall on map and it will tell you the tracker's location. Just press 'Lost History' to find the record.

BATTERY REPLACEMENT

Battery type: CR2032

The CR2032 is a standard sized battery and easy to purchase. Open the case from the button of the device and replace the battery.



FCC Warning Statement Changes or modifications not expressly approved by the party responsible for compliance could void the user's authority to operate the equipment. This equipment has been tested and found to comply with the limits for a Class B digital device, pursuant to Part 15 of the FCC Rules. These limits are designed to provide reasonable protection against harmful interference in a residential installation. This equipment generates uses and can radiate radio frequency energy and, if not installed and used in accordance with the instructions, may cause harmful interference to radio communications. However, there is no guarantee that interference will not occur in a particular installation. If this equipment does cause harmful interference to radio or television reception, which can be determined by turning the equipment off and on, the user is encouraged to try to correct the interference by one or more of the following measures:

- Reorient or relocate the receiving antenna.
- Increase the separation between the equipment and receiver.
- Connect the equipment into an outlet on a circuit different from that to which the receiver is connected.
- Consult the dealer or an experienced radio/TV technician for help.

This device complies with part 15 of the FCC Rules. Operation is subject to the following two conditions: (1) This device may not cause harmful interference, and (2) this device must accept any interference received, including interference that may cause undesired operation.