



Thank you from purchasing the Dr.Trainer training collar. We have made every attempt to provide you with the most technologically advanced product using the most stringent quality and manufacturing standards. We are confident you will be pleased with the results you will attain with your Dr.Trainer. Please remember you will get better results with the use of lower shock combined with consistent training techniques. The use of high levels of shock should only be used as a last resort and in life-threatening situations. Good luck with your training and please feel free to contact us should you have any questions.

1-971-302-6642 or mypetoffers@outlook.com



Important Safety Information

Not for use with aggressive dogs. Do not use this product if your dog is aggressive, or if your dog is prone to aggressive behavior. Aggressive dogs can cause severe injury and even death to their owner and others. If you are unsure whether this product is appropriate for your dog, please consult your veterinarian or certified trainer.

Safety during on-leash training. It is vitally important that you and your dog remain safe while learning during on-leash training. Your dog should be on a strong leash, long enough for him to attempt to chase an object, but short enough for him not to reach a road or other unsafe area. You must also be physically strong enough to restrain your dog when he tries to chase.

Risk of skin damage. Please read and follow the instructions in this manual. Proper fit of the collar is important. A collar worn for too long or made too tight on the pet's neck may cause skin damage. Ranging from redness to pressure ulcers; this condition is commonly known as bed sores.

- Avoid leaving the collar on the dog for more than 12 hours per day.
- When possible reposition the collar on the pet's neck every 1 to 2 hours.
- Check the fit to prevent excessive pressure; follow the instructions in this manual.
- Never connect a lead to the electronic collar; it will cause excessive pressure on the contacts.
- When using a separate collar for a lead, don't put pressure on the electronic collar.
- Wash the dog's neck area and the contacts of the collar weekly with a damp cloth.
- Examine the contact area daily for signs of a rash or a sore.
- If a rash or sore is found, discontinue use of the collar until the skin has healed.
- If the condition persists beyond 48 hours, see your veterinarian.

Table of Contents

How the System Works.....	5
Features.....	5
Key Definitions.....	6
Operating Guide.....	11
Prepare the Remote Transmitter.....	11
Charge the Remote Transmitter.....	11
Turning ON the Transmitter.....	11
Transmitter Digital Display.....	11
Transmitter Battery.....	11
Prepare the Receiver Collar.....	12
Charge the Receiver Collar.....	12
To Turn the Receiver Collar On.....	12
To Turn the Receiver Collar Off.....	12
Test the Shock Function.....	13
Fit the Receiver Collar.....	14
FAQ's.....	16

Components



REMOTE TRANSMITTER



COLLAR RECEIVER FOR DOG 1



COLLAR RECEIVER FOR DOG 2
(*FOR 2-DOG SYSTEM, MODEL TS1-2 ONLY)



BATTERY CHARGER



TEST LIGHT



WRIST STRAP



OWNER'S MANUAL

How the System Works

Now you can experience the difference a Dr.Trainer can make. Spend less time training and more time enjoying your dog. The Dr.Trainer is comfortable for your pet and easy to use with an advanced digital display that tells you exactly what shock and which level you are using.

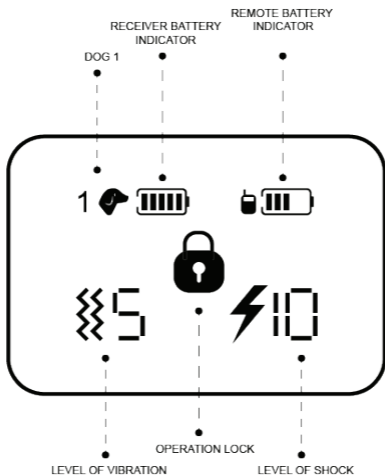
At the push of a button, your remote sends a signal activating your dog's Receiver Collar. He receives a safe but annoying stimulation. He'll quickly learn the association between his behavior and your correction; in no time, you'll have a better-behaved pet. The Dr.Trainer has been proven safe, comfortable, and effective for both small and large dog breeds.

Important: The Dr.Trainer has a range of up to 500 yards. Depending on the way you hold the Remote Transmitter, the maximum range may vary. Terrain, weather, vegetation, transmission from other radio devices, and other factors will affect the maximum range.

Features

- 500 Yards Range
- 10 levels of shock correction
- 5 levels of vibration correction
- Record-able warning/training voice
- Retractable contact points (electrode poles)
- Every Dr.Trainer system is 2-dog compatible
- Rechargeable Batteries in both the Remote Transmitter and Receiver Collar
- Waterproof Remote Transmitter and Receiver Collar

Key Definitions



Remote Transmitter: Transmits the signal to the Receiver Collar. It is waterproof.

Digital Display

Dog 1: The active collar symbol will display to indicate Dog 1. Dog 1 and Dog 2 symbols will be displayed and switched (additional purchase required for 2 dog system).

Operation Lock: When the remote is ready to power off, the lock sign will show up on the screen momentarily, indicating power off mode.

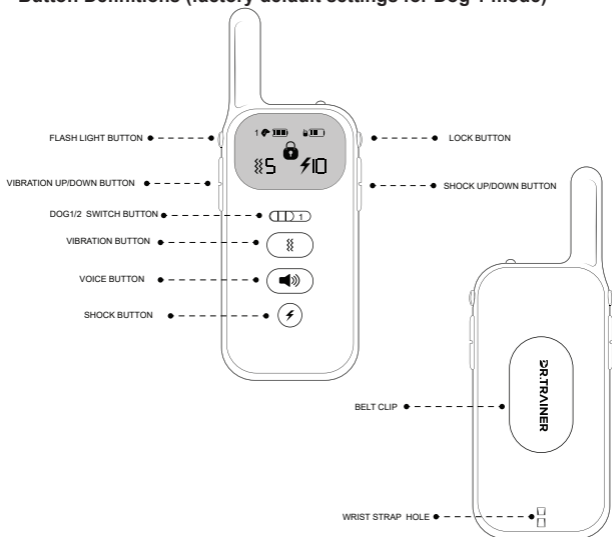
Level of Shock: Shows Dog 1 or Dog 2 level of Shock (Low-1 to High-10).

Level of Vibration: Shows Dog 1 or Dog 2 level of Vibration (Low-1 to High-5).

Remote Battery Indicator: The battery indicator provides constant awareness of the remote battery's power level.

Receiver Battery Indicator: The battery indicator provides constant awareness of the receiver battery's power level.

Button Definitions (factory default settings for Dog 1 mode)



Switch Button:

Switch between dog 1 and dog 2. Only available on 2-dog system. Additional purchase required for 2 dog system.

Voice Button:

Produces a positive training tone, which can be customized on the receiver, from the collar. No shock is delivered.

Vibration Button:

Deliver a continuous vibration on the receiver to the dog.

Shock Button:

When pressed the contact points will pop up and deliver electric shock to the dog. The contact points/poles will retract back to the receiver after shock is delivered.

Shock Up/Down - Upper Right Buttons

Adjust the shock level UP through a range of levels from Low-1 to High-10.

Vibration Up/Down - Upper Left Buttons

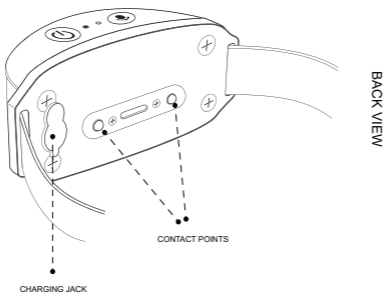
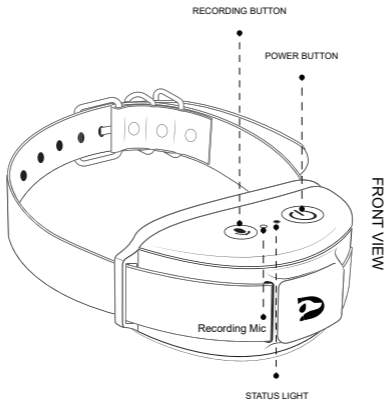
Adjust the vibration level UP through a range of levels from Low-1 to High-5.

Flash Light Button- Top Left Button

While holding button the flash light on the top of the remote will be on, the light will go off after releasing the button.

Lock Screen Button - Top Right Button

While the screen is on, press and hold the button for 3 seconds the screen will be locked momentarily before it turns off, meaning the remote is powered off. To turn it back on, you need to long hold the button for 3 seconds.



Receiver Collar: Delivers shock or warning tone on a signal from the Remote Transmitter.

Power Button: Long pressing and holding this button for 2 seconds turns the Receiver Collar on and off.

Contact Points: The contacts through which the Receiver Collar delivers shock. The contact points will pop up and pull back, when they are activated.

Status Light: Indicates when the Receiver Collar has been turned on or off and also serves as a battery charging indicator.

Charging Jack: For connecting the charger. Although the Remote Transmitter and Receiver Collar are waterproof without the charger covers, keep the covers in place when not charging to keep debris out of the openings.

Recording Button: For recording your warning tone using this button. Long press this button for 2 seconds, the speaker will Beep once, indicating it is ready for recording your training command. Record your voice while holding the button. Release the button after you finish your recording, you will hear two Beeps, indicating a successful recording.

Operating Guide

STEP 1: Prepare the Remote Transmitter

Charge the Remote Transmitter

1. Locate the Charging Jack under the Remote.
2. Connect one of the charger connectors to the Remote Transmitter Charging Jack.
3. Plug the charger into a standard wall outlet.
4. Charge the Remote Transmitter. Note: The Battery Indicator on the screen and the status light will indicate the charging process.

Turning ON the Transmitter

If the remote is turned off, you need to press and hold the lock button for about 3 seconds to turn it back on. Light up the Transmitter by holding it up, the display will automatically turn on, because of its built-in motion sensor.

Transmitter Digital Display

After 30 seconds with no buttons pressed, the display shuts off and the Transmitter goes into battery conservation mode. Holding it up, the screen will turn back on.

STEP 2: Prepare the Receiver Collar

Charge the Receiver Collar

- 1.Lift the rubber cover protecting the Receiver Collar Charging Jack.
- 2.Connect the charger connector to the Receiver Collar Charging Jack.
- 3.Plug the charger into a standard wall outlet.
- 4.Charge the Receiver Collar, the red LED light will blink, charge until the Green Indicator Light comes on and is solid, indicating a full charge.

To Turn the Receiver Collar On

- 1.Press and hold the Power button until the Blue LED comes on and the Receiver Collar emits two short Beeps.
- 2.Release the Power button. The Blue LED will stay on blinking, meaning the Receiver Collar is in working mode.

To Turn the Receiver Collar Off

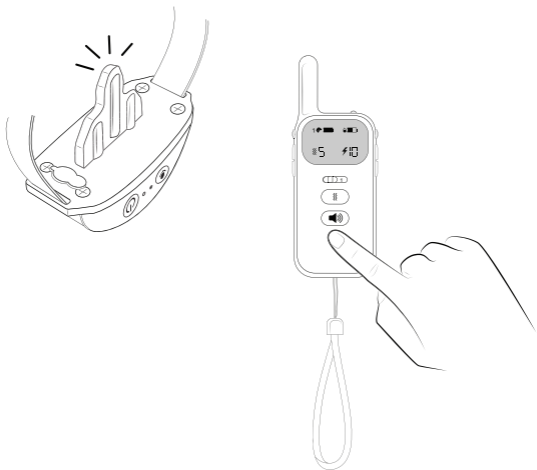
- 1.Press and hold the Power button until the Blue LED comes off and the Receiver Collar emits one long Beep.
- 2.Release the Power button. To extend the life between charging cycles, turn the Receiver Collar off when it is not in use.

STEP 3: Test the Shock Function

To ensure the shock function works properly before using the collar on your dog, it is recommended that you should test the shock function at least once before use. Please follow below instructions on how to use the test light to test.

1. Turn the Receiver Collar on.
2. Place the Test Light Contacts over the Contact Points.
3. Press a shock button on the Remote Transmitter.
4. The Test Light will flash.
5. Turn the Receiver Collar off.

Save the Test Light for future testing. Note: If the Test Light does not flash, recharge the battery and re-test.



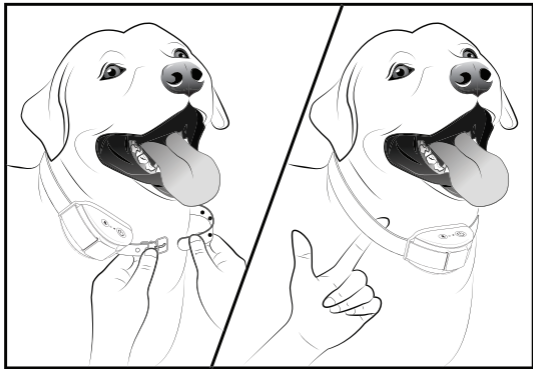
STEP 4: Fit the Receiver Collar

Important: The proper fit and placement of your Receiver Collar is important for effective operation.

To assure a proper fit, please follow these steps:

1. Make sure that the Receiver Collar is turned off.
2. Start with your dog standing comfortably.
3. Place the Receiver Collar on your dog's neck close to the ears. Center the Contact Points underneath your dog's neck.
4. Check the tightness of the Receiver Collar by inserting one finger between the collar and your dog's neck. The fit should be snug but not constricting.

Note: It is sometimes necessary to trim the hair around the Contact Points to make sure that when the contact electrodes pop up they will deliver effective shock.



Pairing Guide

The remote and the receiver are paired by default at factory. In case you want to repair them, please follow below instructions.

STEP 1: Enter pairing mode

Holding the two minus buttons “-” on both side on the remote at the same time for 3 seconds, the DOG 1 (or DOG 2) sign on the remote screen starts to blink, indicating the remote is ready to pair with the receiver. Now move to step 2.

STEP 2: Pair the receiver

Press the power and record button on the receiver simultaneously, until the DOG1/DOG2 sign on the screen blinks rapidly and then stops blinking, indicating a successful pairing. Now your receiver is paired with DOG1 or DOG2, depending which DOG you choose by switching between DOG1 or DOG2.

Note: For 1 DOG system, only DOG1 is available for pairing. For 2 DOGs system, you are able to pair them separately.

FAQ's

Q: Is the shock safe for my pet?

While the shock is unpleasant, it is harmless to your pet. Electronic training devices require interaction and training from the owner to achieve desired results.

Q: How old does a pet have to be before using the Dr.Trainer?

Your pet should be able to learn basic obedience commands such as "Sit" or "Stay." Pets should be at least 6 months old before using the Trainer.

Q: Once my pet is trained and has been obeying my commands, will he have to continue to wear the Receiver Collar?

Probably not. He may need to wear the Receiver Collar from time to time for reinforcement.

Q: Is the Receiver Collar waterproof?

Yes. All of the Dr.Trainer Receiver Collars are waterproof. However, please do NOT use the shock button when the dog is in water.

Q: Can I use the trainer with more than one pet?

Yes. You need to purchase the Two Dog Version of the product, which comes with two receivers and one remote.

Q: Can I use the Dr.Trainer on aggressive pets?

We do not recommend any of our products to be used on aggressive pets. We recommend you contact your local veterinarian or professional trainer to determine if your pet might be aggressive.

FAQ's

Q: Why my pet is not responding when I press a button?

- Check to see if the Receiver Collar has been turned on.
- If your range has reduced from the first time you have used it, please check to see if the battery is low in either the Remote Transmitter or Receiver Collar.
- You can verify the Receiver Collar is delivering shock to your pet by placing the Test Light, enclosed in your kit, on the Receiver Collar. Please refer to the “Test Light Instructions” section for details.
- Increase the correction level.
- Make sure the Receiver Collar's Contact Points are placed snugly under your pet's skin. When the shock is activated, the contact points will pop up and deliver shock against your pet's skin.

Q: Why the Receiver Collar won't turn on?

Make sure the Receiver Collar has been charged.

Q: Why the Receiver Collar is not responding to the Remote Transmitter?

Verify the Receiver Collar has been turned on. Refer to “Turning the Receiver Collar On and Off”.

IMPORTANT!

Please noted that, as the maximum shock level can be detrimental to dogs that are sensitive to electric shock and different breeds of dog react differently to the same level of shock stimulation, it is highly recommended that you should always start from the lowest intensity level, i.e. Level 1, and pay close attention to your dog's reaction when increasing the shock level.

FCC Statement

This equipment has been tested and found to comply with the limits for a Class B digital device, pursuant to part 15 of the FCC rules. These limits are designed to provide reasonable protection against harmful interference in a residential installation. This equipment generates, uses and can radiate radio frequency energy and, if not installed and used in accordance with the instructions, may cause harmful interference to radio communications. However, there is no guarantee that interference will not occur in a particular installation. If this equipment does cause harmful interference to radio or television reception, which can be determined by turning the equipment off and on, the user is encouraged to try to correct the interference by one or more of the following measures:

- Reorient or relocate the receiving antenna.
- Increase the separation between the equipment and receiver.
- Connect the equipment into an outlet on a circuit different from that to which the receiver is connected.
- Consult the dealer or an experienced radio/TV technician for help.

To assure continued compliance, any changes or modifications not expressly approved by the party.

Responsible for compliance could void the user's authority to operate this equipment. (Example- use only shielded interface cables when connecting to computer or peripheral devices).

This equipment complies with Part 15 of the FCC Rules. Operation is subject to the following two conditions:

- (1) This device may not cause harmful interference, and
- (2) This device must accept any interference received, including interference that may cause undesired operation.

RF warning statement:

The device has been evaluated to meet general RF exposure requirement. The device can be used in portable exposure condition without restriction.