

## XT16.ANC Bluetooth headset

ANC BLUETOOTH 5.0

用户手册

### 充电

- 耳机充电：  
耳机语音提示时，表示低电量即将关机，把耳机放入充电仓内，即可自动充电。
- 充电仓充电：  
充电仓为LED数字显示，充电口插入充电线即可。



Type-C接口

### 在哪看耳机电量显示

手机和耳机连接后，蓝牙符号/耳机符号旁边有个电池图标可显示电量



### 双耳机同时使用连接

首先要充满电

方法一：  
充满电后，打开上盖后需要取出耳机，等待5秒，耳机有红光后，打开手机蓝牙搜索【XG-5.0】点击配对。



方法二

充满电后，同时拿出两个耳机，长按耳机触摸点5秒后耳机开机，打开手机蓝牙搜索【XG-5.0】点击配对。

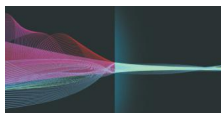


### 单耳机使用连接

首先要充满电

充满电后，取出一只耳机，耳机有红光后长按打开手机蓝牙搜索【XG-5.0】点击配对。

### 如何开启降噪/通透模式



#### 1. 通透模式

在耳机开机或者播放音乐的状态下，长按左右耳机任意一边2s左右，同时听到“嘟”的一声提示音，即可进入通透模式  
提示音：transparency

#### 2. 降噪模式

在通透模式的状态下，长按左右耳机任意一边2s左右，同时听到“嘟”的一声提示音，提示音：ANC on

#### 3. 关闭降噪/通透模式

在降噪模式的状态下，长按左右任意一边2s左右，同时听到“嘟”的一声提示音，提示音：ANC off

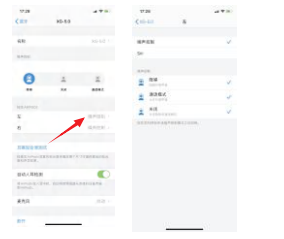
### 重置蓝牙耳机

把耳机放入充电仓，关闭舱盖。  
等待3-5秒拿出耳机，会自动重新配对！

### 苹果手机可以设置ANC模式



### 苹果手机设置如何设置3个模式



### 耳机使用时请注意一下信号注意事项：

- 1.佩戴方法很重要，避免信号天线被耳朵内部所阻挡住，请根据介绍页佩戴方法进行佩戴。
- 2.双耳模式下任何一边耳机用手捂住都会导致信号不良情况，目前此类技术耳机均没有这个情况，因为用手相当于阻断了两个耳机之间的信号连接；
- 3.双耳模式下耳机与主耳机（L耳机）中间一定不能有多余干扰性强的障碍物，并且需要确保两者之间的距离，真影响了手机与主耳机（L耳机）间的信号传输；
- 4.双耳模式下，若副耳机（R耳机）有偶尔断连现象，属于正常现象，毕竟蓝牙属于无线信号传输，就跟WiFi网络一样，有时候不稳定属于正常可能，此时刚好信号传输受到干扰，请稍等片刻或者换一下位置即可解决

### 耳机佩戴方式



### 产品参数

#### 耳机产品参数：

型号:XT16.ANC  
版本: 5.0+EDR  
充电电压: DC 5V  
电池电压: 3.2-4.2V  
耳机充电时间: 1h  
输入耳机电流: 5V/50mA  
充电仓电池容量: 300mAh  
充电仓可以充耳机次数: 3次

耳机通话时间: 3h  
耳机音乐时间: 3h  
通讯距离: 10m  
电池容量: 40mAh  
耳机待机时间: 100h

### 产品解析



触摸点

耳机指示灯

电量显示

### 警告

- 1.请勿以任何理由拆除或维修改装耳机，否则可能会导致火灾电击穿，甚至彻底损坏本产品。
- 2.请勿将设备置于温度过低或者过高（0℃以下或45℃以上）的环境下。
- 3.请避免靠近儿童或者动物的眼睛使用设备指示灯。
- 4.请勿在雷暴天气下使用该设备，雷暴可能导致设备工作不正常并增加触电的危险。
- 5.请勿用油以及其他挥发的液体擦拭本产品。
- 6.请勿将设备接触液体弄湿。

### 注意

长时间使用耳机可能会造成听力损害，请合理安排使用时间

## XT16.ANC Bluetooth headset

ANC BLUETOOTH 5.0

FFC ID: 2A52T-XT16

NOTE: LABEL is too large to be printed on the product, so it is printed in the and User Manual

User Manual

### Charging

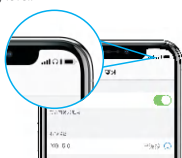
- Earphone charging: When the earphone prompt "Battery low", Please put the earphones into the charge case, it automatically turn off and charging.
- Charge case charging: The charge case is LED power display. Please use the qualified charging cable provided by the manufacturer to charge.



Type-C interface

### Where to see the power display?

After the earphone have connected with the phone, there is a battery mark next to the bluetooth or earphone symbol to display the battery level.



### Dual earphones mode

#### Method one:

After fully charged, opening the cover, not need remove the earphones will turn on automatically, waiting about 5 seconds, the red and blue lights flash, turn on Bluetooth on the phone, search for the pairing name "XG-5.0" and click to connect.



Method Two

After fully charged, take the two earphones and touch about 5 seconds, the red and blue lights flash, turn on Bluetooth on the phone, search for the pairing name "XG-5.0" and click to connect



### Single earphone mode :

After fully charged, take the two earphones and touch about 5 seconds, the red and blue lights flash, turn on Bluetooth on the phone, search for the pairing name "XG-5.0" and click to connect



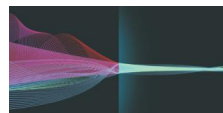
### Earphone operation function

Power on: light touch 5 seconds  
Power off: light touch 5 seconds

Next song: Double touch the right earphone  
Previous song: Double touch the left earphone  
Volume up: Triple touch the right earphone  
Volume down: Triple touch the left earphone  
Answer the call: Light touch any side  
Reject the call: Light touch 2 seconds any side



### How to turn on noise reduction/transparency mode



#### 1. Transparent mode

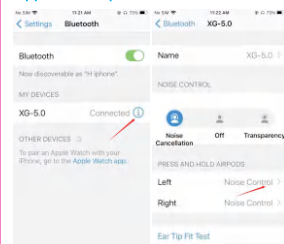
When the headset is turned on or playing music, long press left and right About 2s on either side of the earphone, you hear a beep at the same time Prompt tone to enter transparent mode Prompt tone: transparency

#### 2. Noise reduction mode

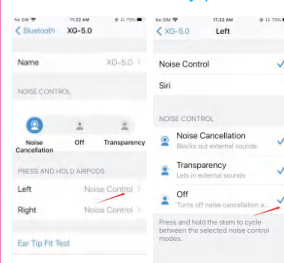
In the transparent mode, long press either side of the left and right earphones About 2s, you hear a beep sound at the same time, Prompt tone: ANC on  
Left and right, when you hear a beep, Prompt tone: ANC off  
Reset Bluetooth headset

Put the headset into the charging compartment and close the compartment cover.Wait 3-5 seconds to take out the headset, it will automatically re-pair!

### Apple mobile phone can set ANC mode



### How to set three modes by Iphone?



### About Signal

- 1.Please notice the wearing method, do not cover the earphone by ear to prevent interruption of signal.
- 2.Do not cover any one earbuds on the dual earbuds mode by hand, or it will result the interruption of signal.
- 3.Please use this earphone under its working range (10 meters) and for best results avoid obstacles inbetween the connected devices.
- 4.On the dual earbuds model, sometimes the connected of "R" maybe interrupted,please check the using condition or the working range.

### How to wear the headset



### Parameters of earphones:

Model: XT16.ANC  
Version: 5.0+EDR  
Battery voltage: 3.7V  
Headphone music time: 3-4h  
Earphone talk time: 3-4h  
Charging voltage: DC 5V  
Communication distance: 10m  
Headphone standby time: 120h  
Headphone charging time: 0.8h

### Product analysis

- 2.Please do not put the product to too high or too low temperature(Below 0℃ or above 45℃).
- 3.Please avoid using the device indicator light near the eyes of children or animals.
- 4.Please do not use the device under thunderstorms. It may cause the device to malfunction and increase the risk of electric shock.
- 5.Please do not wipe the product with oil or other volatile liquids.
- 6.Please do not let the device get wet with liquids.

### Warning

1. Please do not take the earbuds apart and remodel, otherwise, it may cause electrical breakdown by the fire or even completely damage the product.

It may cause hearing damage under longtime using, please arrange the use time reasonably.

FCC STATEMENT  
This device complies with Part 15 of the FCC Rules. Operation is subject to the following two conditions:  
(1) This device may not cause harmful interference.  
(2) This device must accept any interference received, including interference that may cause undesired operation.  
NOTE: This equipment has been tested and found to comply with the limits for a Class B digital device, pursuant to Part 15 of the FCC Rules. These limits are designed to provide reasonable protection against harmful interference in a residential installation. This equipment generates uses and can radiate radio frequency energy and, if not installed and used in accordance with the instructions, may cause harmful interference to radio communications. However, there is no guarantee that interference will not occur in a particular installation. If this equipment does cause harmful interference to radio or television reception, which can be determined by turning the equipment off and on, the user is encouraged to try to correct the interference by one or more of the following measures: Reorient or relocate the receiving antenna. Increase the separation between the equipment and receiver. Connect the equipment into an outlet on a circuit different from that to which the receiver is connected. Consult the dealer or an uncontrolled environment. This equipment should be installed and operated with minimum distance 15mm between the radiator & your body