

深圳有力科技有限公司
ShenZhen Powerful Technology CO., Limited

天线测试报告

SPECIFICATION FOR APPROVAL

客 户 欧创
CUSTOMER: _____
客 户 料 号
CUSTOMER NO: _____
品 名
PART NAME: 2400-2500MHz (板载天线)
供 方 料 号
SUPPLIER NO: _____

日期 Date: 2023.03.15

客户确认 CUSTOMER APPROVED BY		
APPROVAL	CHIEF	SUPERVISOR

供方确认 SUPPLIER SIGNATURE		
APPROVAL	CHECK	DESIGN
赵旋旋	陈娜	张权

实验室测试环境及设备



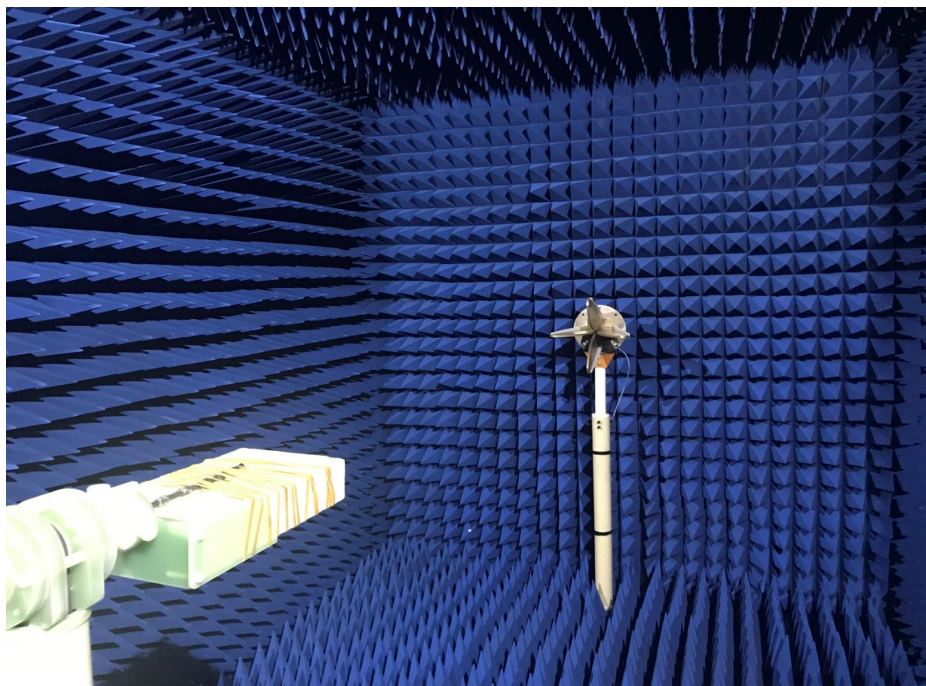
CMW500



E5071B



Agilent 8960



测试项目 (Test Project) : S11、S12 、 VSWR 、 Efficiency、 Gain 3D Radiation Pattern 、 TRP、 TIS

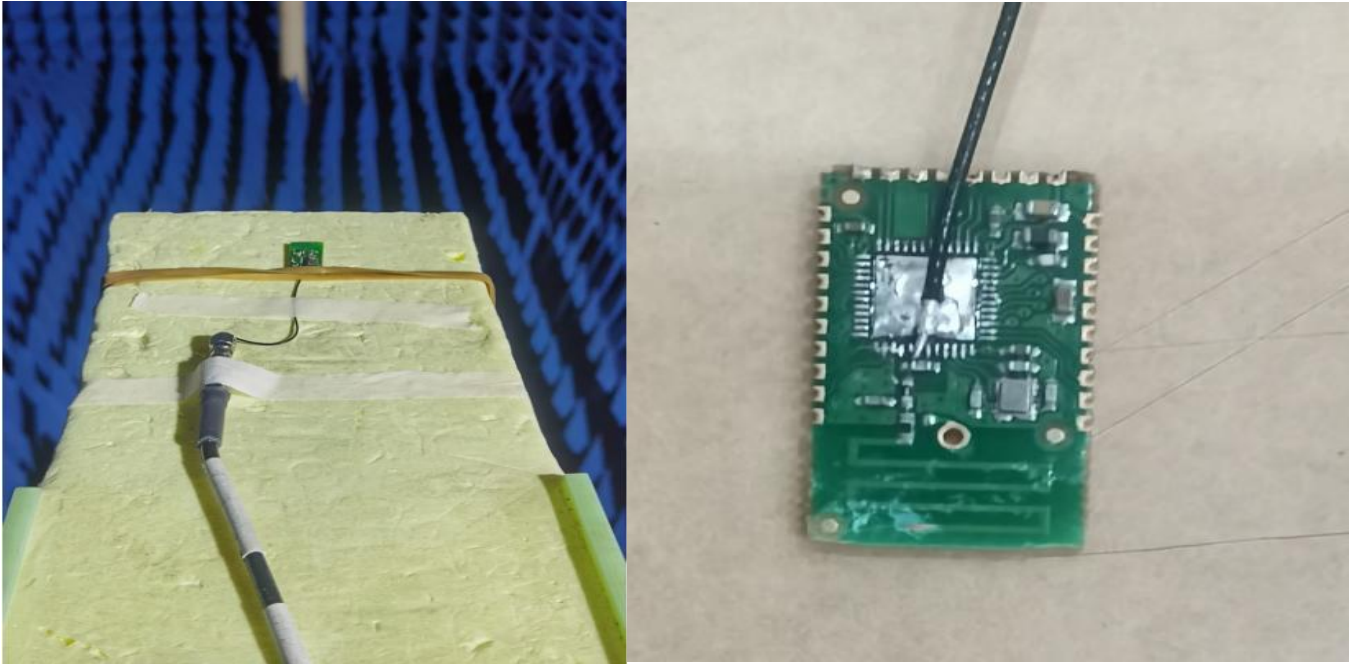
規 格 承 認 書 3

 1.技术指标（Technical Index） 4

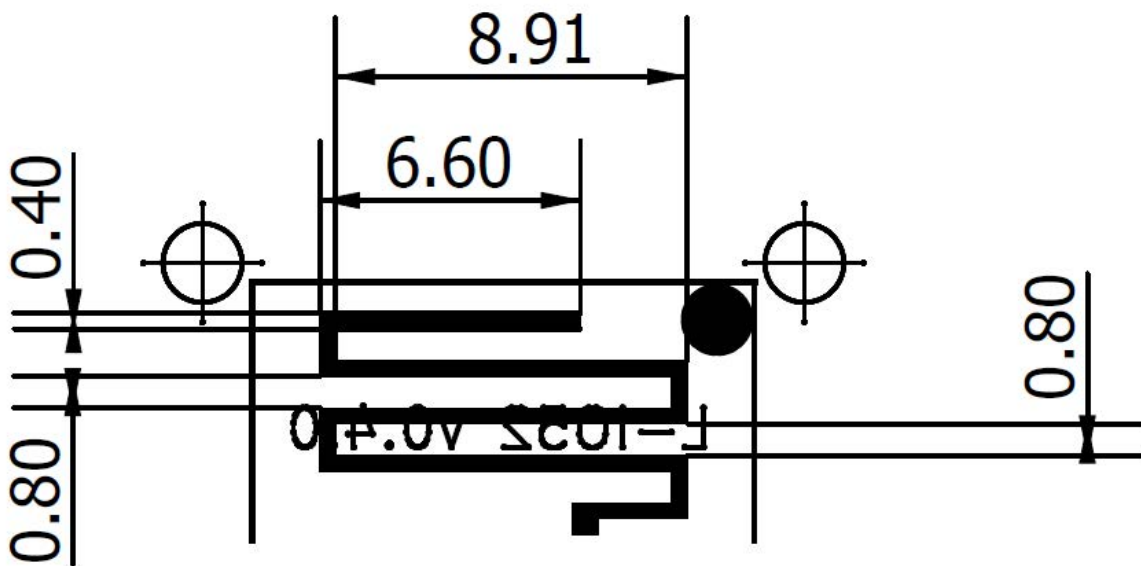
 3.天线测试数据（Antenna test data） 5-9

1. 技术指标 (Technical Index)

频率范围	Frequency Range (MHz)	2400-2500MHz
增益	Gain (dBi)	2400-2500MHz@ MAX -1.41dBi
天线类型	type	板载



Antenna Size:(Unit mm)



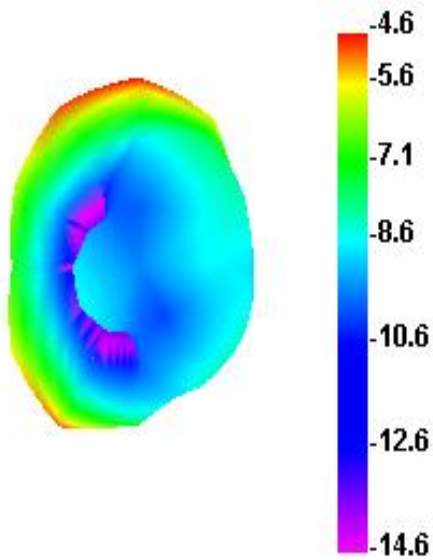
3. 天线测试数据 (Antenna test data)

3-1 无源效率/增益

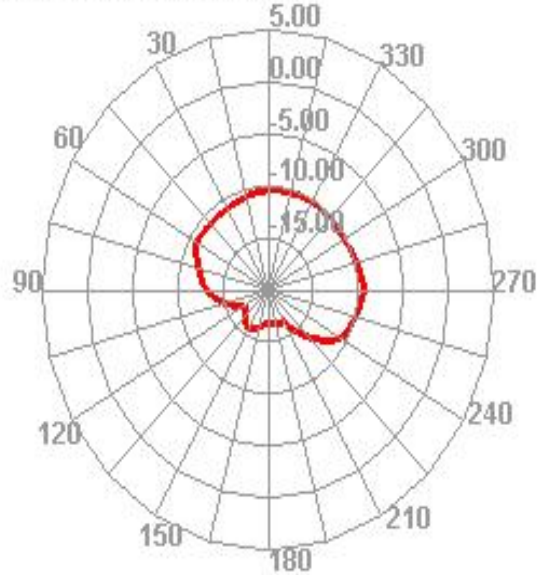
Passive Test For 2.4G		
Freq (MHz)	Effi (%)	Gain (dBi)
2400	10.64	-4.59
2405	10.79	-4.57
2410	11.51	-4.37
2415	12.43	-4.13
2420	12.73	-4.17
2425	13.69	-3.99
2430	15.95	-3.43
2435	16.55	-3.38
2440	16.89	-3.43
2445	18.12	-3.16
2450	18.83	-3.09
2455	19.06	-3.1
2460	19.29	-3.1
2465	20.31	-2.96
2470	21.99	-2.64
2475	23.61	-2.43
2480	25.63	-2.1
2485	27.74	-1.81
2490	30.33	-1.41
2495	31.41	-1.36
2500	30.21	-1.54

3-2 方向图

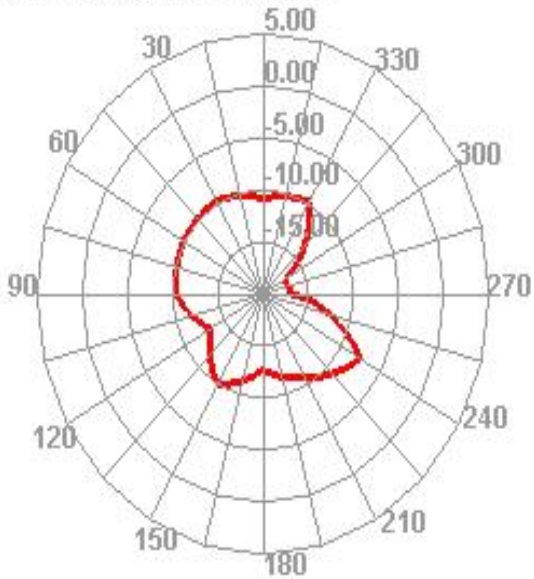
2400.000MHz



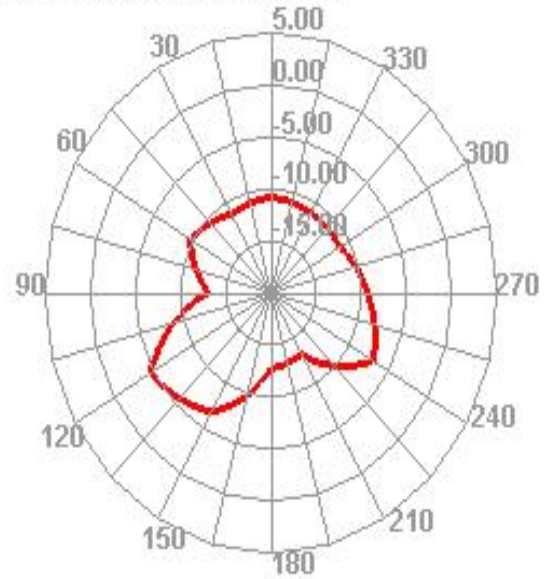
2400.000MHz H



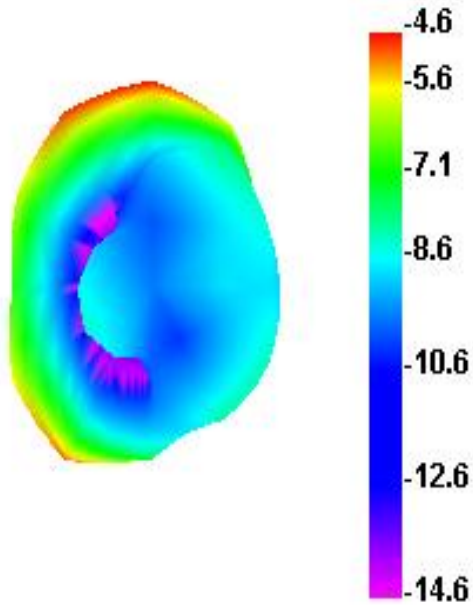
2400.000MHz E1



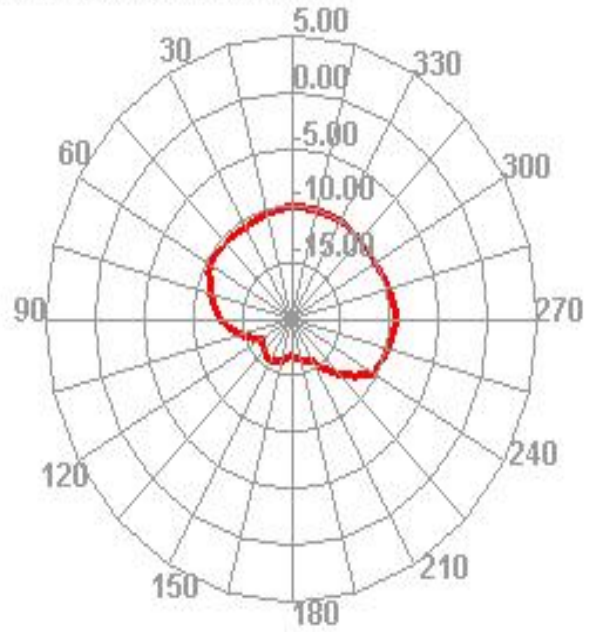
2400.000MHz E2



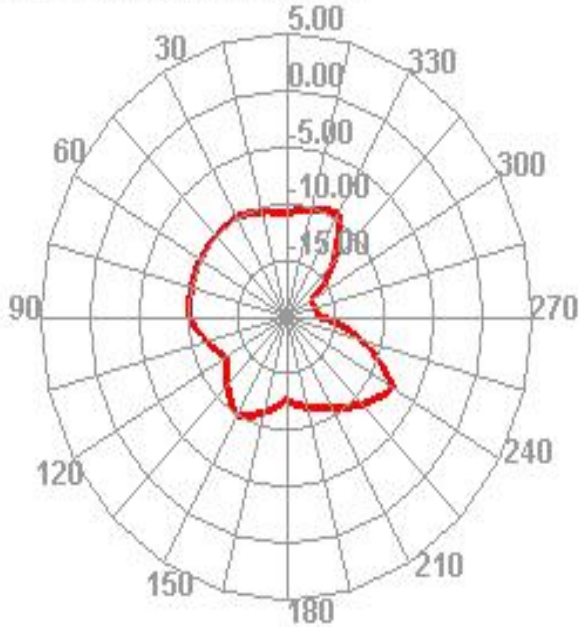
2405.000MHz



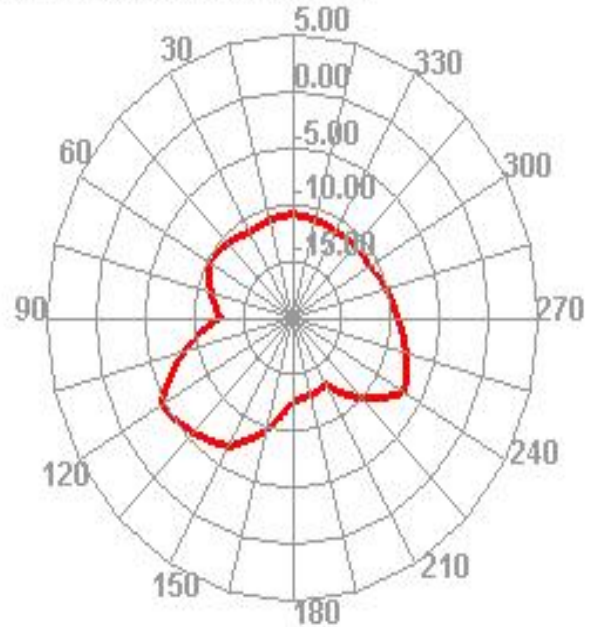
2405.000MHz H



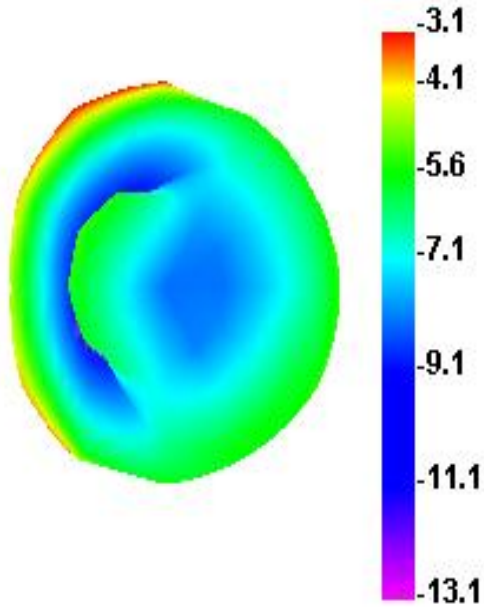
2405.000MHz E1



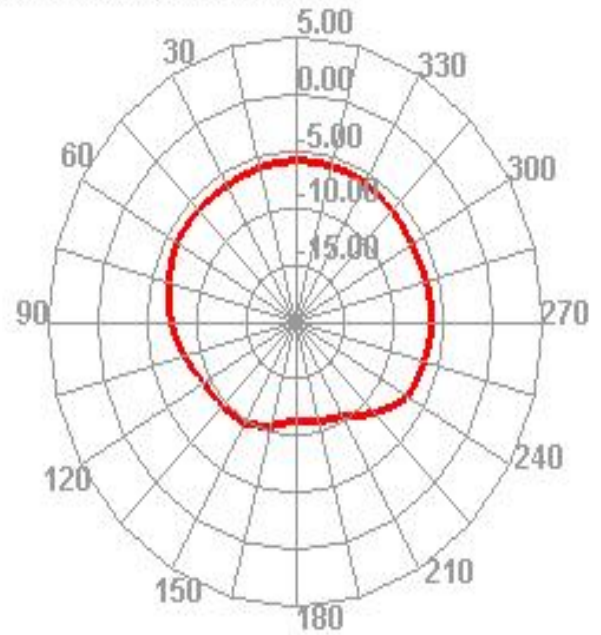
2405.000MHz E2



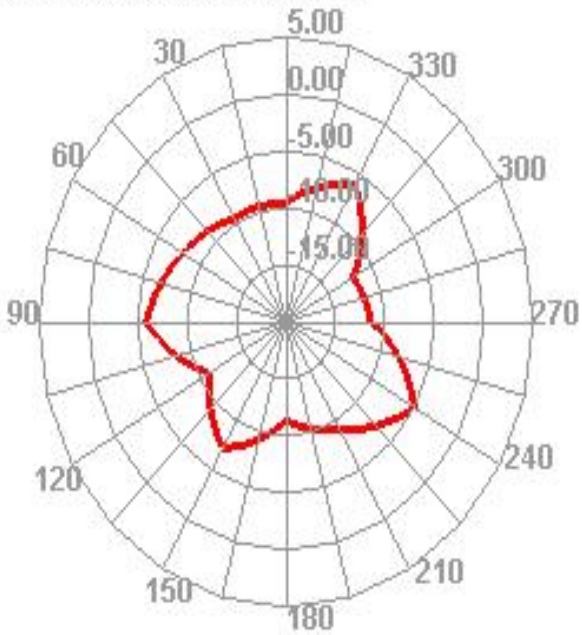
2450.000MHz



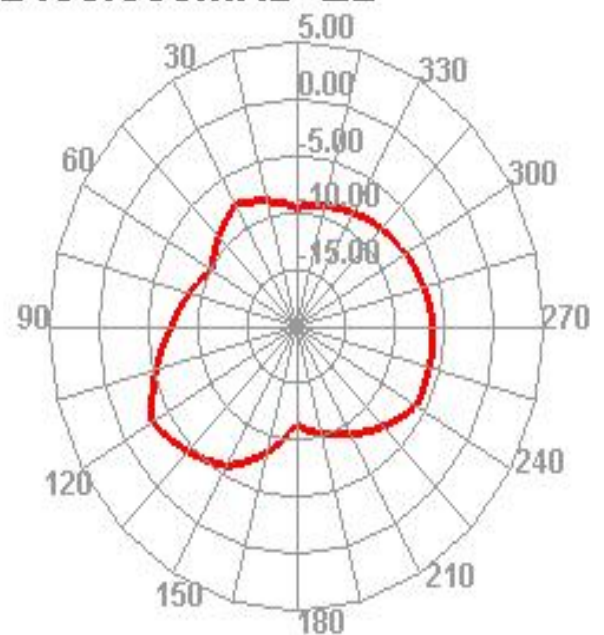
2450.000MHz H



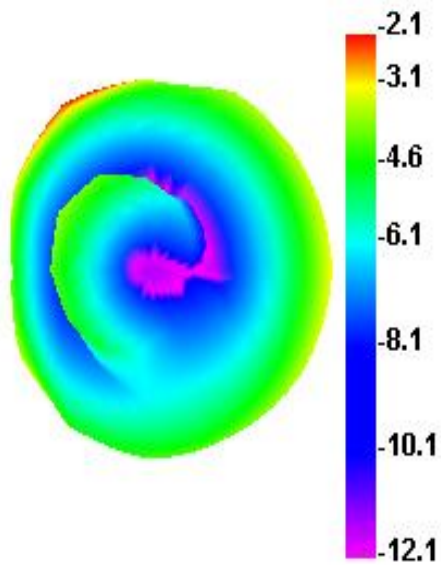
2450.000MHz E1



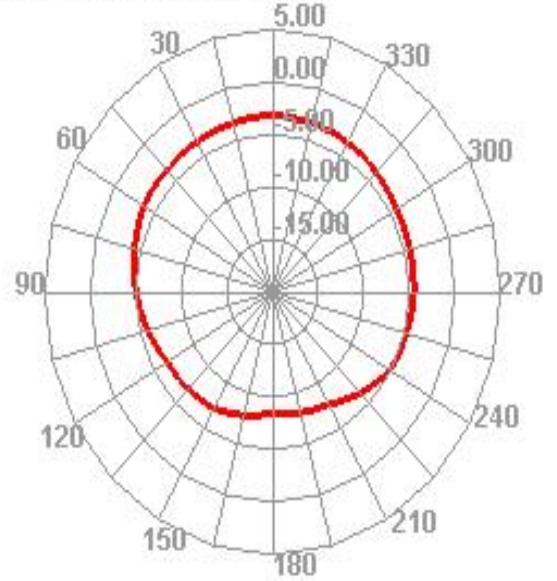
2450.000MHz E2



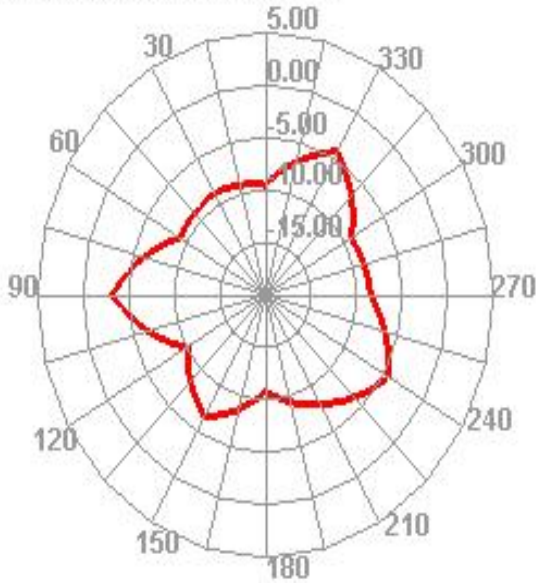
2480.000MHz



2480.000MHz H



2480.000MHz E1



2480.000MHz E2

