

Shenzhen Trifo Technology Co., Ltd.

Current Date 2021/08/02

To: **SGS-CSTC Standards Technical Services (Shanghai) Co., Ltd.**
No. 588 West Jindu Road, Songjiang District, Shanghai, China. 201612

Dear Sir/Madam,

Subject: **Declaration Letter about Identity of Products**

*WE Shenzhen Trifo Technology Co., Ltd. HEREBY DECLARED THAT

-

Our product:

Product Description:	AI Home Robot
----------------------	---------------

And the models below :

Model No.:	OLL-M/OLL-P/OLL-S
Manufacturer's Name:	Shenzhen Trifo Technology Co., Ltd.
Manufacturer's Address:	Room 201, Building A, No.1, Qianwan Road 1, Qianhai Shenzhen-Hong Kong Cooperation Zone, Shenzhen, China

with the model(s) below which samples we chose to be tested by SGS

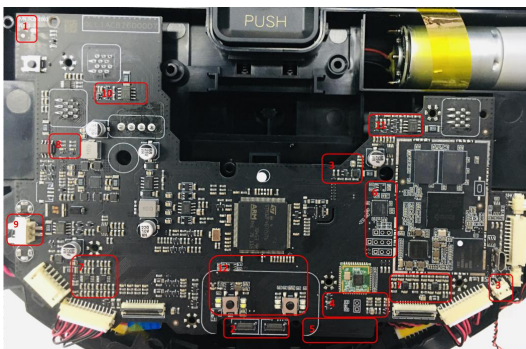
Model No.:	MAX-S/MAX-P/OLL-U
Manufacturer's Name:	Shenzhen Trifo Technology Co., Ltd.
Manufacturer's Address:	Room 201, Building A, No.1, Qianwan Road 1, Qianhai Shenzhen-Hong Kong Cooperation Zone, Shenzhen, China

Pls explain the difference between the add models and the model for testing concretely.

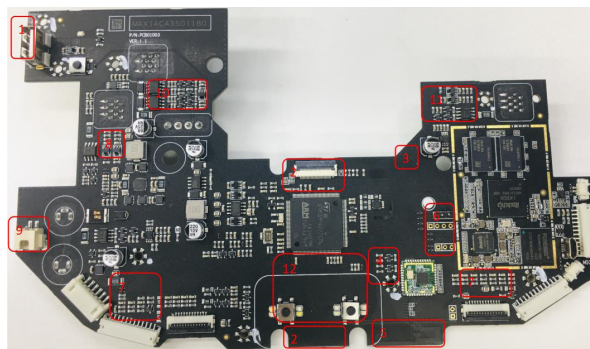
The newly developed project of our company is highly consistent with the registered products, using the same model of wifi module and PCBA design. Information about changes to registered products is mainly as follows:

1. Model name.
2. The comparison of PCBA differences.

The PCBA of the newly added model product:

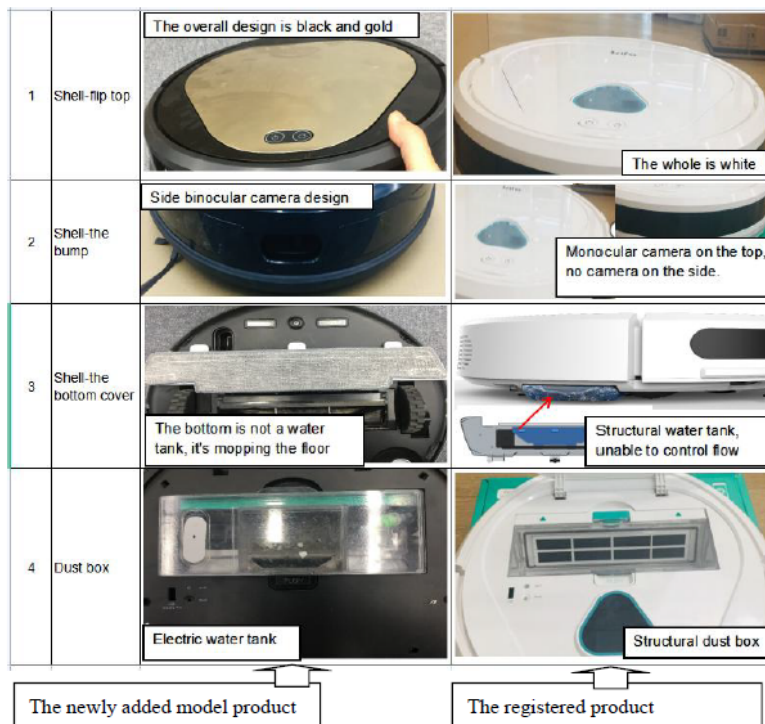


The PCBA of the registered product:



Differential position No.	The PCBA of the newly added model product(OLLIE)	The PCBA of the registered product(MAX)
1	Cancel the USB.	The USB.
2	Connect binocular camera.	Connect a monocular camera.
3	Increase the control circuit and interface of the electric water tank.	No control circuit of electric water tank.
4	Control LED lamp circuit movement position, does not belong to the wireless module circuit.	Control LED lamp circuit.
5	The antenna direction adjustment, The antenna gain does not change after adjusting the antenna direction.	The Original antenna direction
6	Add binocular camera circuit	No binocular camera circuit
7	Optimize drop sensor circuit	The Original circuit
8	Remove wheel encoder buffer circuit, optimize circuit	The Original circuit
9	Adjust the connector orientation to fit the structural space	The Original position
10	Simplified circuit structure	The Original circuit
11	Adjust the layout to fit the structural position	The Original position
12	Add binocular camera circuit	No binocular camera circuit

3.The comparison of product shell differences:



Sincerely,

Signature:	
Printed Name :	Weiyu.bai
Position/Title :	Quality Manager
Contact Number:	+86 18931658852