

16



1

Meet Max!
I love to protect while I clean.
Protective, Strong, Efficient, Smart

For information about Max,
please visit:
www.trifo.com

Safety Instructions

⚠ CAUTION:

1. Use only the original rechargeable battery and charging base specially equipped by the manufacturer. Non-rechargeable batteries are strictly prohibited. Please refer to the "Product Specifications" section for the battery information.
2. It is forbidden to use this product in environments with open flames or fragile objects.
3. It is forbidden to use this product in extremely hot (above 40°C) or extremely cold (below 0°C).
4. It is forbidden for human hair, clothes, fingers and other parts to approach the opening and operating parts of the product.
5. It is forbidden to use products on wet ground.
6. It is forbidden for this product to absorb any items such as stones and waste paper that may cause products seized-up.
7. It is forbidden for this product to absorb any inflammable substances, such as petrol, toner and toner for printers or photocopies. Prohibit the use of the product in clean areas with flammable items.
8. It is forbidden for this product to absorb any burning items, such as cigarettes, matches, ashes and other items that may cause fire.
9. It is forbidden to place items at the suction opening. Do not use this product when the suction port is blocked. Please clean up dust, cotton wool, hair, etc. at the suction opening to ensure smooth air circulation at the suction opening.
10. Use the power cord carefully to avoid damage. It is forbidden to use the power cord to drag or pull this product or the product's charging base. It is forbidden to use the power cord as a handle. It is forbidden to clamp the power cord under the door. It is forbidden to pull the power cord at sharp corners. It is forbidden for the product to run on the power cord. The power cord should be far away from the heat source.
11. Do not use a damaged charging base.
12. Even if the product has been severely damaged, burning of the product is prohibited, which may lead to explosion of the product's battery.

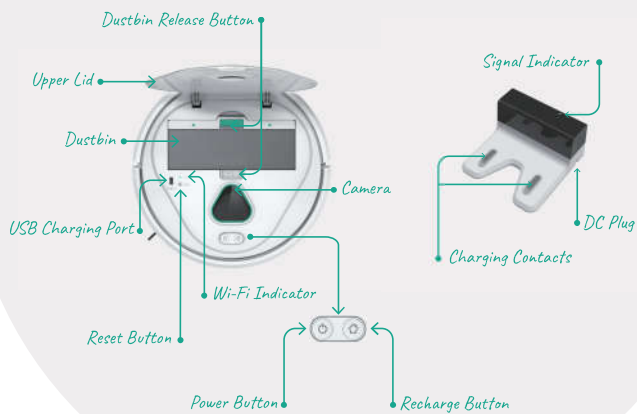
Meet the New Smartest Member of Your Family

All you need is me, my charging station and a power adapter and you're good to go. Get ready for a better, smarter cleaning experience.



Learn How Smart I Am

Check out my features and where they're located.



Safety Instructions

NOTE:

1. Only authorized technicians can disassemble this product. Users are not recommended to disassemble this product by themselves.
2. This product can only use the power adapter provided by the factory. If other adapters are used, the product may be damaged.
3. Do not touch wires, sockets or power adapters when your hands are wet.
4. Do not use cloth curtains or body parts to roll into the product's drive wheels.
5. Do not place this product near cigarette butts, lighters and other smoldering fires.
6. Please clean the product after charging.
7. Do not bend wires excessively or place heavy objects and sharp objects on the product.
8. This product is an indoor household product. Do not use it outdoors.
9. Do not sit on the product.
10. Do not use this product in wet environment (e.g. bathroom).
11. Before using this product, please remove all vulnerable items (e.g., glasses, lamps, etc.) on the ground as well as items (e.g., wires, paper sheets, curtains) that may entangle the side brushes and suction passages.
12. Do not put this product in a place where it is easy to fall (e.g., on desks and chairs).
13. Please carefully check whether the power adapter is connected to the socket before use, otherwise the battery may be damaged.
14. To help prevent trips, please inform other members of the house when this product works.
15. Please empty the dustbin before using this product when the dustbin is full.
16. The temperature used for this product is 0°C to 40°C.
17. Don't press or scratch the glass window with hard objects.
18. Don't run the robot when the upper lid is open.
19. Don't wash the HEPA filter with water. Only the primary filter is washable.

Safety Instructions

Before using this product, please read and follow all the following safety instructions, and keep this manual for future reference. Any operation inconsistent with this instruction manual may cause damage to this product.

HARMFUL SUBSTANCE:

SGS Report No.: TSNEC1901570102

Verification Requested: With reference to RoHS Directive (EU) 2015/863 amending 2011/65/EU.

Verification Conclusion: Based on the verification results of the submitted samples, the results of Lead, Mercury, Cadmium, Hexavalent chromium, Polybrominated biphenyls (PBBs), Polybrominated diphenyl ethers (PBDEs) and Phthalates such as Bis (2-ethylhexyl) phthalate (DEHP), Butyl benzyl phthalate (BBP), Dibutyl phthalate (DBP), and Diisobutyl phthalate (DIBP) comply with the limits as set by RoHS Directive (EU) 2015/863 amending Annex II to Directive 2011/65/EU.



Executive standard:

IEC 60335-2-2:2009+A1:2012+A2:2016 | IEC 60335-1:2010+A1:2013+A2:2016

EN60335-1 | EN62233 | EN55014-1/2 | EN61000-3-2/3

EN 300328 | EN 301489 | EN 62479

ISO 13849-1

CSA C22.2 No. 243-17 Sixth Edition

UL 1017 Tenth Edition

Please take attention that changes or modification not expressly approved by the party responsible for compliance could void the user's authority to operate the equipment.

This device complies with Part 15 of the FCC Rules. Operation is subject to the following two conditions:

- (1) This device may not cause harmful interference, and
- (2) This device must accept any interference received, including interference that may cause undesired operation.

This equipment complies with FCC radiation exposure limits set forth for an uncontrolled environment. This equipment should be installed and operated with minimum distance 20cm between the radiator & your body.

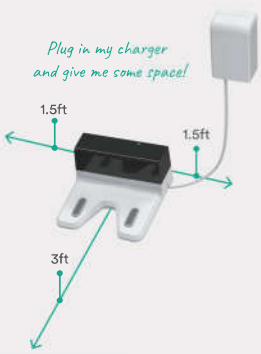
Here's How to Start Me Up

Just remove the protective strip, and you're ready to rock n' roll. Then download the Trifo Home App so we can talk when you're not at home.



How to Get a Charge Out of Me

Plug in my charger and give me some space!



Then plug me in to my charger and after a little while, I'm good to go.



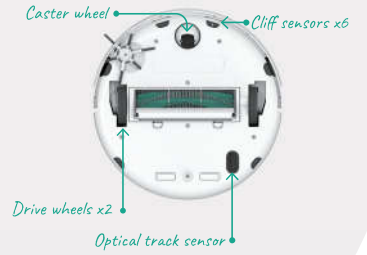
Keep Me Running Smoothly

Cleaning my important parts will help me do the best job cleaning our house.

Using a soft cloth, start with my camera glass

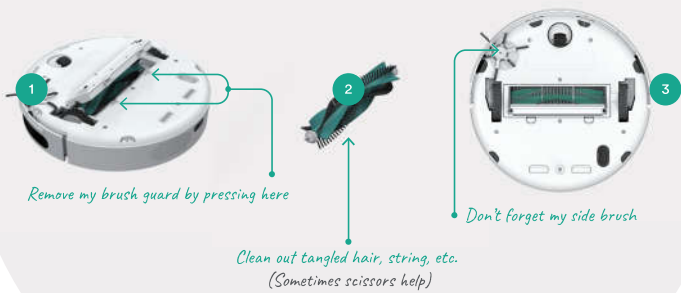


Then turn me over and keep cleaning



I Need a Clean Brush, Just Like You!

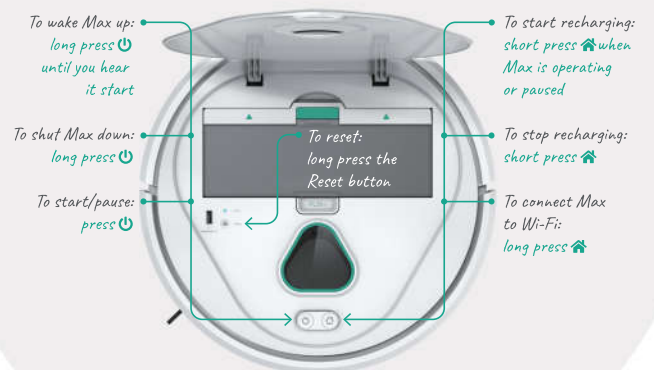
Keep my brush clean to help keep our house clean.



Ahhhhh, I feel better already!

Let's Make a Clean Sweep!

Here's how to start cleaning and to know what's going on with me.



Indicator Lights

All my lights and what they mean.

Indicator light

- 📶 Wi-Fi: solid blue
- 📶 Wi-Fi: blinking blue
- 📶 Wi-Fi: off
- 🔌 Power: solid white
- 🔌 Power: solid red
- 🔌 Power: slow flashing white
- 🔌 Power: blinking white
- 🏠 Recharge: solid green
- 🏠 Recharge: solid orange
- 🏠 Recharge: slow flashing orange
- 🏠 Recharge: slow flashing orange + 🔌 Power: off

What it means

- Robot is connected
- Robot is connecting
- Robot is no connected
- Robot is operating
- Robot is not functioning
- Robot is booting up
- Robot is upgrading or resetting
- Surveillance camera is on
- Battery is low
- Robot is returning to the charging base
- Robot is charging

When I Get Full, Tip Me Over and Dump Me

Keeping me clean is as easy as 1, 2, 3 (and 4, 5, 6, 7)



Put my dustbin back together and put it back in.
(After the filter is dry)

