

VOCOLinc

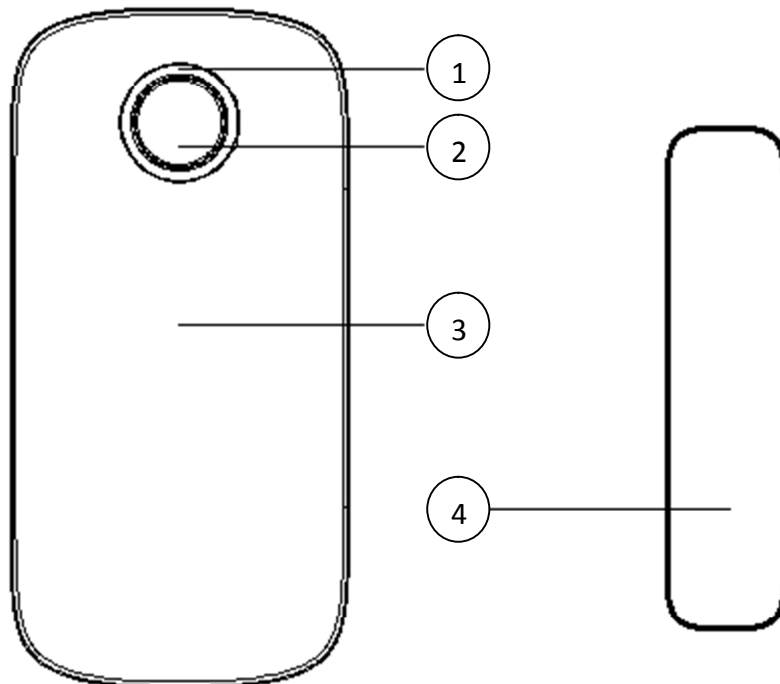
VS1

Smart Contact Sensor

Product Overview:

The **VOCOLinc Smart Contact Sensor (VS1)** lets you know the status of your doors, windows, cabinets or safety gates, by simply asking Siri or checking your iOS devices, wherever you are*, via HomeKit, Apple's smart home platform. You are able to receive a notification whenever there is any change in the status of your doors or windows, when equipped with the VS1. You can also use the VS1 to trigger scenes for home automations (e.g. open window > turn on humidifier). The VS1 uses Bluetooth low energy technology (BLE) and a replaceable battery (CR2032), which gives you up to 6 months of battery life. Setup is quick and easy. Make your house safer today.

* an Apple TV (4th gen or above), HomePod or suitable iPad is required as a Home Hub for remote access. VS1 is exclusively compatible with Apple HomeKit.



1	Status LED	Indicates accessory status
---	------------	----------------------------

2	Reset Button	Press & hold for about 5 seconds: factory reset All connection data will be cleared. You must remove the accessory from the app and add it back.
3	Contact Sensor	Built-in
4	Magnetic Piece	

LED Indicators Status

Status	Status indication LED status
Pairing Process	Green - flashes quickly
Device added successfully	Green - flashes slowly 5 times
Discovering device	Green - flashes slowly 5 times
Open/closed state change	Green - flashes once
Reset	Press and hold for 5 secs, until a green LED appears and flashes for 3 secs.

What's In The Box:

Smart Contact Sensor

Sensor Magnet

Button Battery (CR2032)

Quick Start Guide

User Manual

3M Adhesive ×2

Key Features:

Bluetooth low energy technology 5.0

Real-time status notifications

Automate your home by triggering scenes

Status LED

Up to 6-month battery life (replaceable battery)

Compact design

Specification

Battery: CR2032, DC 3V 220mAh

Operation Temperature : 0-40°C

Purpose of control : Electrical control

Type of action: Type 1.C

Control Pollution Degree: PD 2

Number of operation cycles: 10,000

Communication Protocol: Bluetooth 5.0

Signal System: BLE 1M/BLE 2M

Operating frequency:2402~2483.5MHz

Max. transmit power: 0dBm

Indoor Use Only

System Requirement:

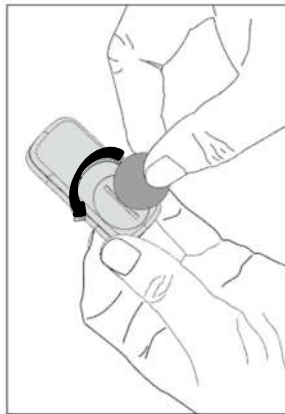
Mobile device running iOS12.0 or later

Stable Internet connection (for remote access)

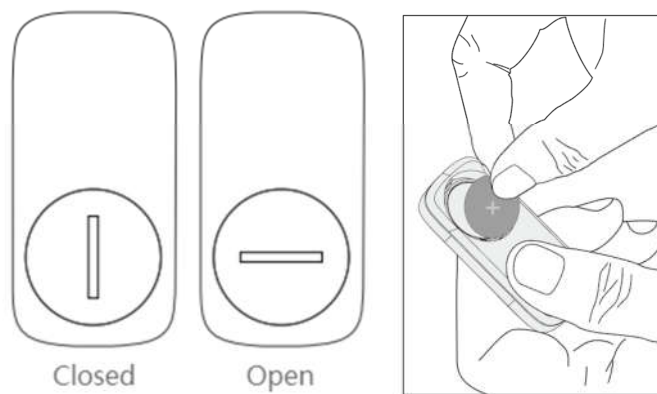
Quick Start Guide

Installation

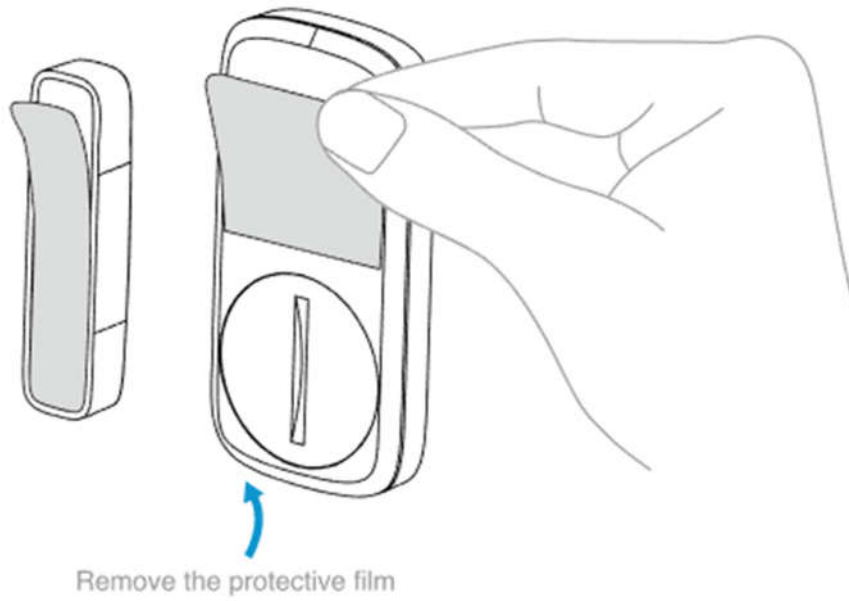
1. Open the battery cover located on the back of the contact sensor **with the aid of tools** and insert the button battery (CR2032) into the contact sensor. Starting the pairing process (please refer to “pairing”).



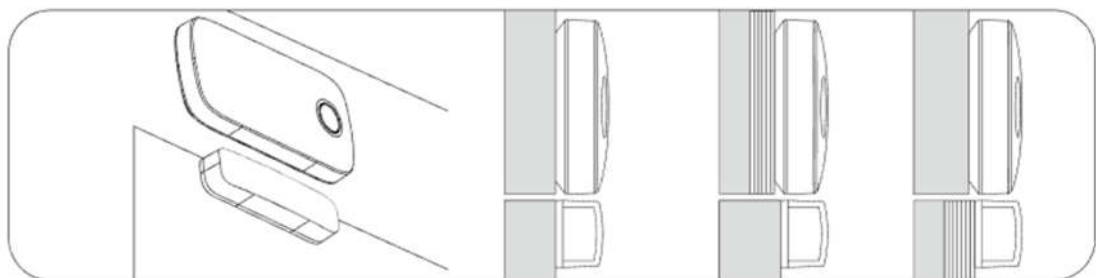
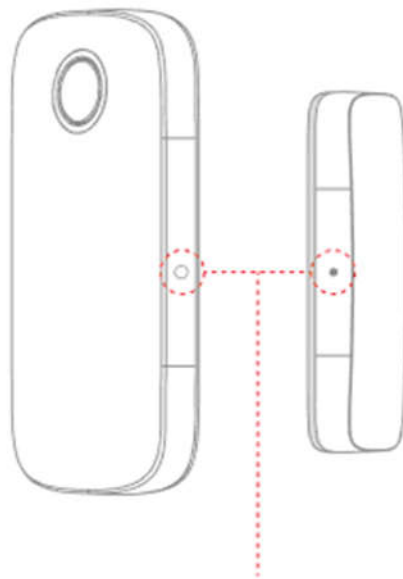
Open the battery cover



2. After pairing is complete, check if the LED is lights up each time you move two pieces close to/apart from each other. If it is working properly, remove the protective film and stick the two parts to the relevant surface.



3. During installation, make sure to align the dot marker on each of the two pieces, also ensuring the gap between the two halves is less than 20mm when the door/window is closed. Use spacers to level the two pieces up (shown in diagram).



Important Tips:

1. Install the contact sensor part onto the fixed non-moving part of the door or window etc (e.g. door frame), with the magnet piece being placed on the moving part (e.g. door).
2. To get realtime notification anywhere you go, an Apple TV (4th gen or above), HomePod or suitable iPad is required as a Home Hub for remote access. VS1 is exclusively compatible with Apple HomeKit.

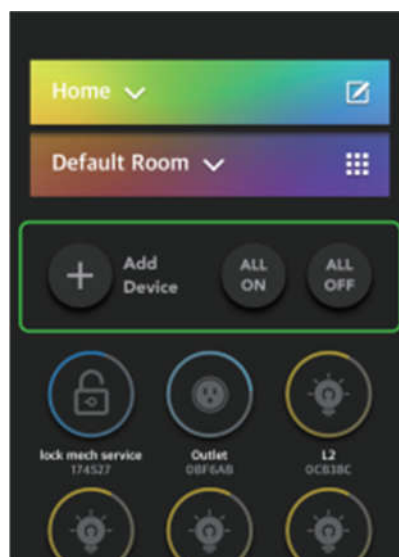
Pairing

Connect your iOS device to the internet and make sure Bluetooth is On, then follow the steps below:

1. Download and open the free VOCOLinc LinkWise app from the Apple App Store.



2. Enter "pairing mode" by pressing and holding the button for 5 seconds, until a green LED appears and flashes for 3seconds. Then Tap "+" located at the top left corner on the "Home" menu of the LinkWise app. Follow the on-screen instructions to complete pairing.



Warning:

- The battery must be removed from the device before it is scrapped;

- The device must be disconnected from the supply mains (where appropriate) when removing the battery;
- The battery is to be disposed of safely;
- Using incorrect type batteries can cause damage to people or the accessory.

FCC

Caution:

This equipment has been tested and found to comply with the limits for a Class B digital device, pursuant to Part 15 of the FCC Rules. These limits are designed to provide reasonable protection against harmful interference in a residential installation.

This equipment generates uses and can radiate radio frequency energy and, if not installed and used in accordance with the instructions, may cause harmful interference to radio communications. However, there is no guarantee that interference will not occur in a particular installation. If this equipment does cause harmful interference to radio or television reception, which can be determined by turning the equipment off and on, the user is encouraged to try to correct the interference by one or more of the following measures:

- Reorient or relocate the receiving antenna.
- Increase the separation between the equipment and receiver.
- Connect the equipment into an outlet on a circuit different from that to which the receiver is connected.
- Consult the dealer or an experienced radio/TV technician for help.

The antenna(s) used for this transmitter must be installed to provide a separation distance of at least 20 cm from all persons and must not be co-located or operating in conjunction with any other antenna or transmitter.

This device complies with part 15 of the FCC Rules. Operation is subject to the following two conditions:

- (1) This device may not cause harmful interference
- (2) this device must accept any interference received, including interference that may cause undesired operation.

Any Changes or modifications not expressly approved by the party responsible for compliance could void the user's authority to operate the equipment.

IC

This device complies with Industry Canada's license-exempt RSSs. Operation is subject to the following two conditions:

- (1) This device may not cause interference; and
- (2) This device must accept any interference, including interference that may cause undesired operation of the device.

In order to avoid the possibility of exceeding the ISED radio frequency exposure limits, human proximity to the antenna shall not be less than 20cm (8 inches) during normal operation.

Le présent appareil est conforme aux CNR d'Industrie Canada applicables aux appareils radio exempts de licence. L'exploitation est autorisée aux deux conditions suivantes:

- (1) l'appareil ne doit pas produire de brouillage.
- (2) l'utilisateur de l'appareil doit accepter tout brouillage radioélectrique subi, même si le brouillage est susceptible d'en compromettre le fonctionnement.

Afin d'éviter la possibilité de dépasser les limites d'exposition aux fréquences radio de la ISED, la proximité humaine à l'antenne ne doit pas être inférieure à 20 cm (8 pouces) pendant le fonctionnement normal.

EU Declaration of Conformity (DoC)

We, Foner Technology Co., Ltd.

declare that the DoC is issued under our sole responsibility and belongs to the following product:

Product name: Smart Contact Sensor

Trade name: VOColinc

Type or Model: VS1

The object of the declaration described above is in conformity with the relevant Union Harmonisation Legislation:

RE Directive 2014/53/EU; ROHS Directive 2011/65/EU

The following standards and technical specifications have been applied for RE Directive 2014/53/EU:

Safety and Health(Article 3.1a): [EN 62368-1:2014+A11:2017]

EMC (Article 3.1b): ETSI EN 301 489-1 V2.1.1 (2017-02); ETSI EN 301 489-17 v3.1.1 (2017-02)

RF Spectrum Efficiency(Article 3.2): ETSI EN 300 328 V2.1.1

Special requirements invoked(Article 3.3): n/a

The following standards and technical specifications have been applied for the other European Legislation:

ROHS Directive 2011/65/EU

Signed on behalf of: Foner Technology Co., Ltd.

4F, Fuxing Bldg, Binlang Road, Futian Free Trade Zone, Shenzhen, Guangdong, China

Place and date of issue (of this DOC): 09/03/2020

Name: Howard Dong

Function: Project Director

Signature: Howard Dong

