

Figure 5: Internal view

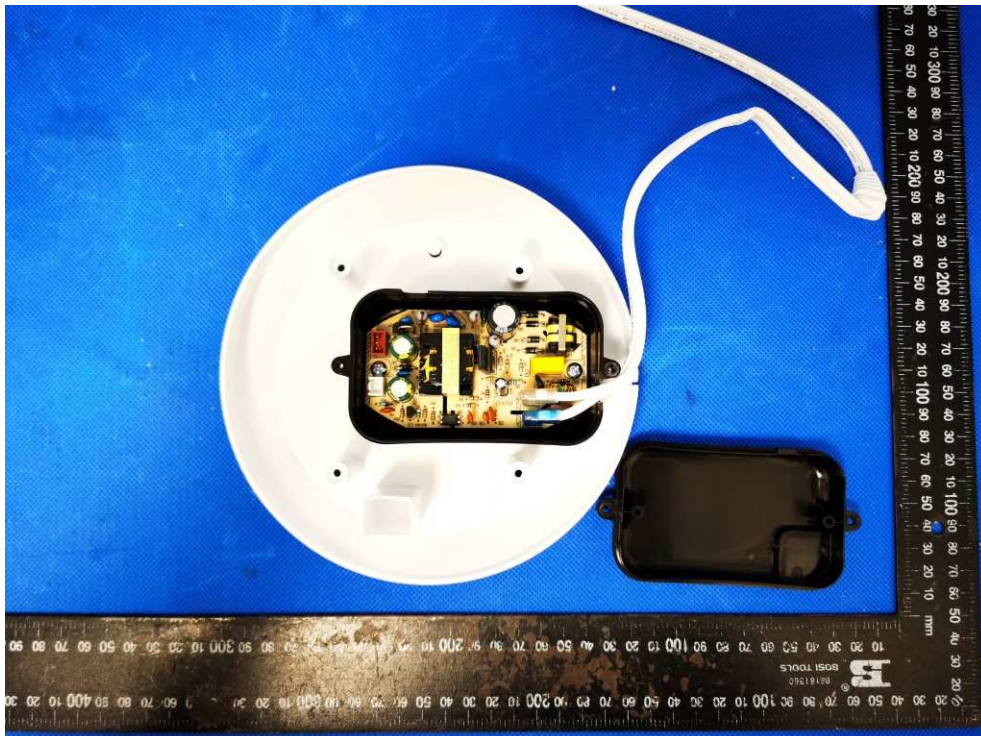


Figure 6: Power supply unit

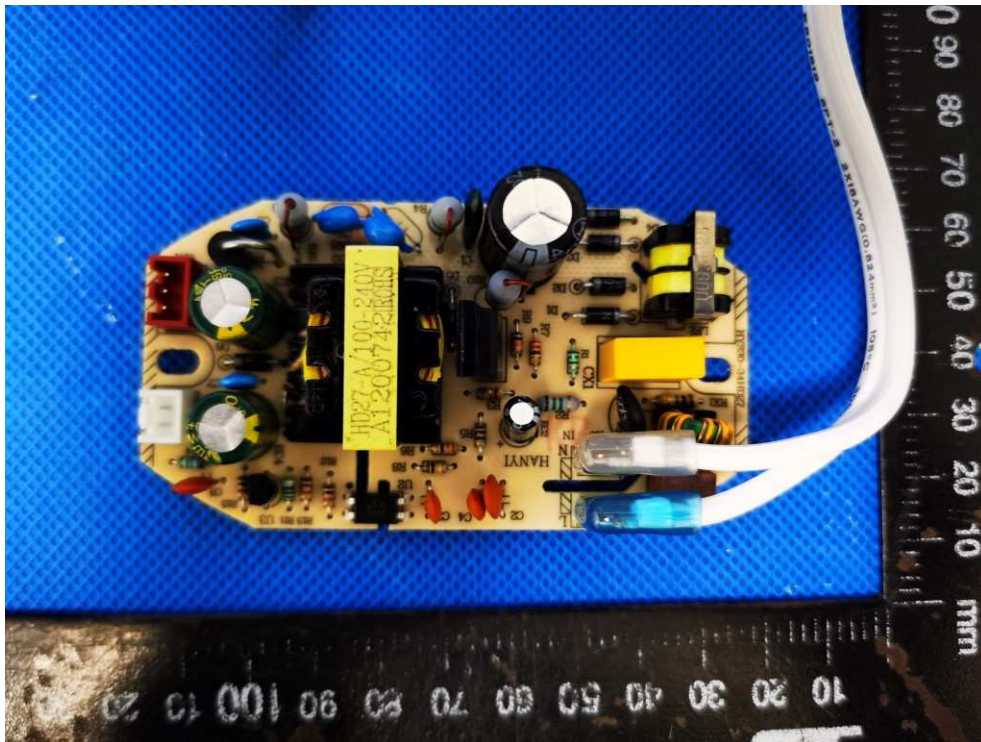


Figure 7: PCB of Power supply unit

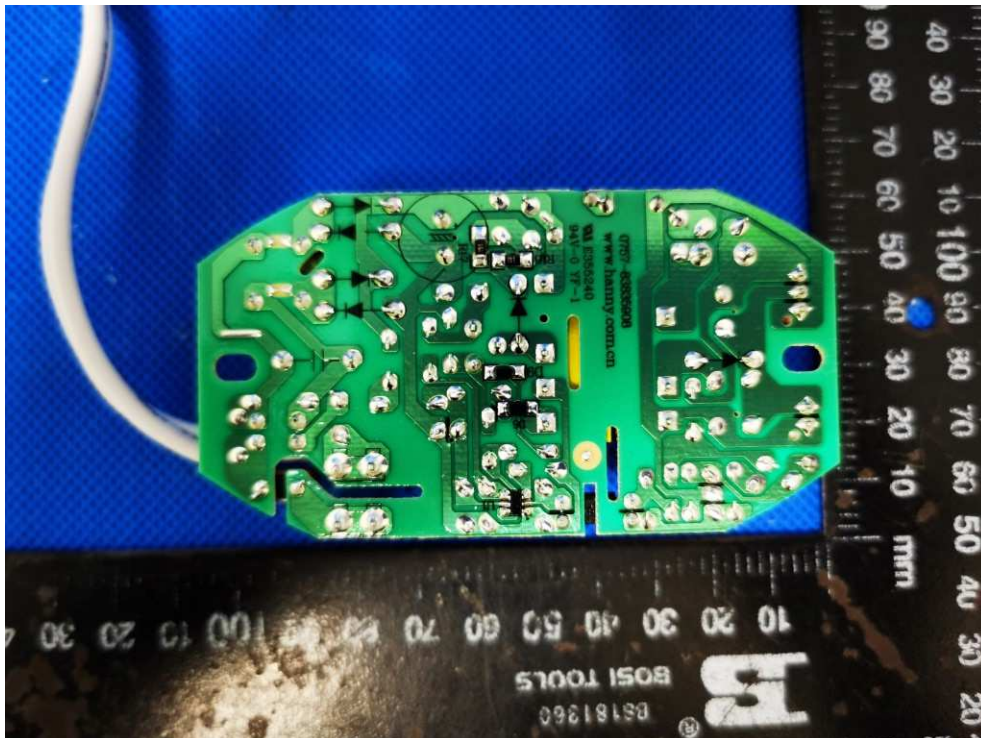


Figure 8: PCB of Power supply unit

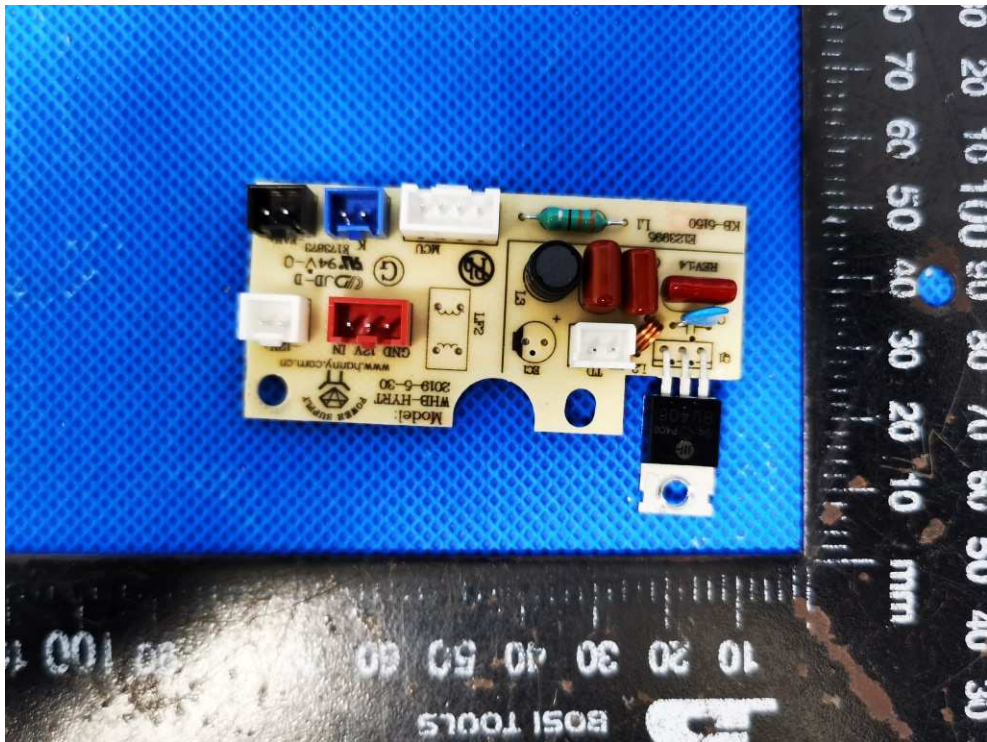


Figure 9: PCB for Transducer

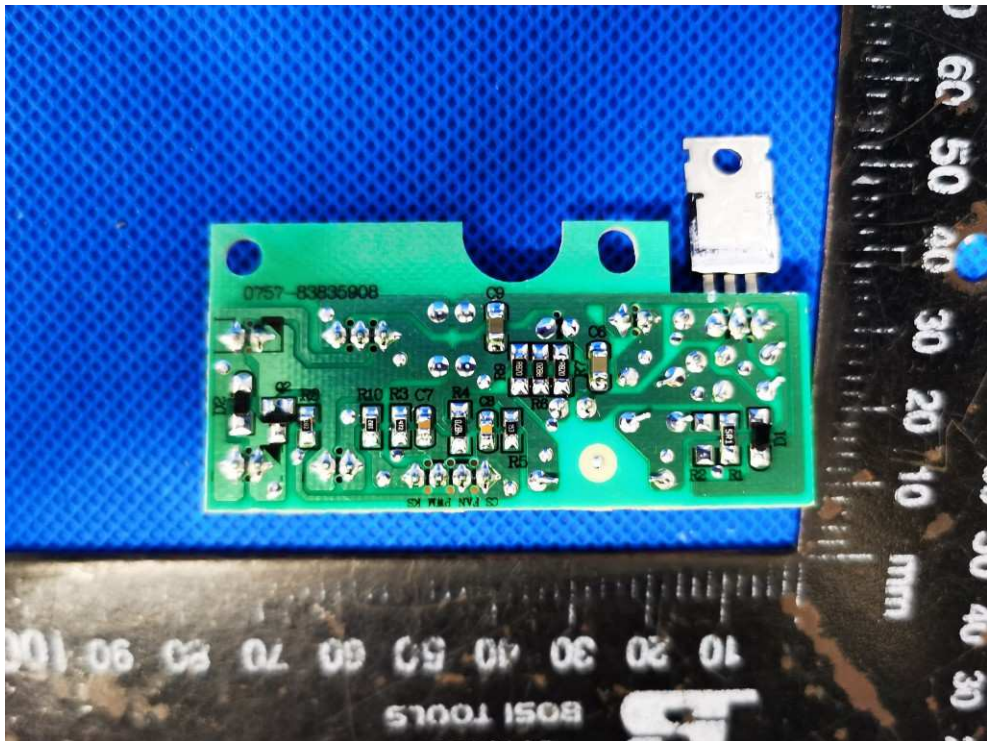


Figure 10: PCB for Transducer



Figure 11: Control PCB



Figure 12: Control PCB



Figure 13: DC fan

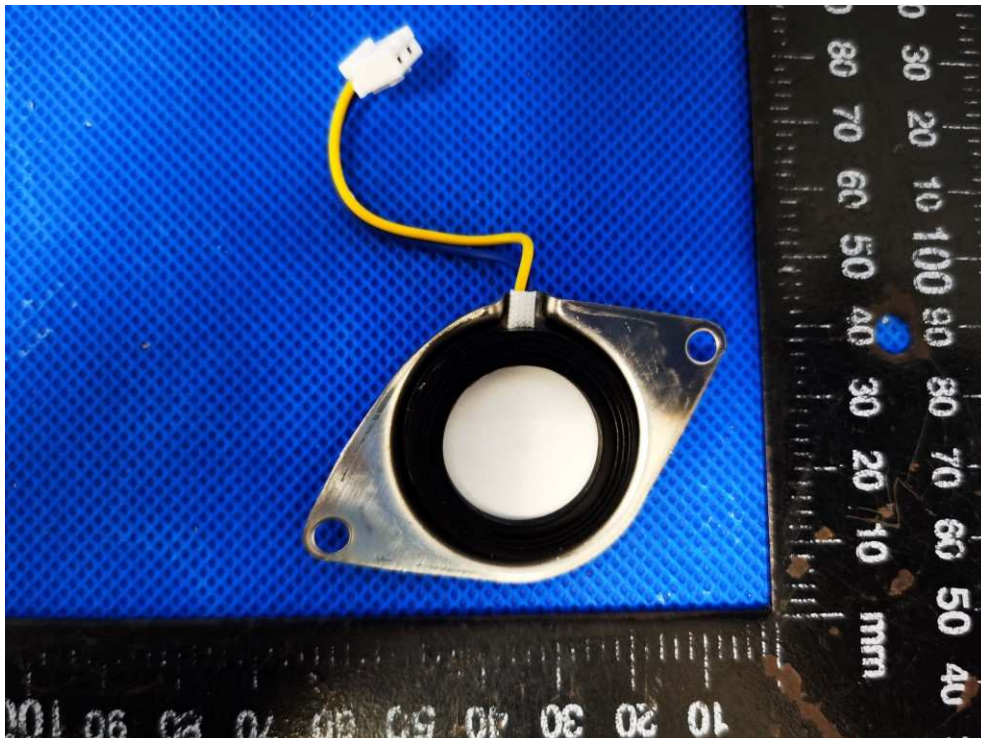


Figure 14: Transducer

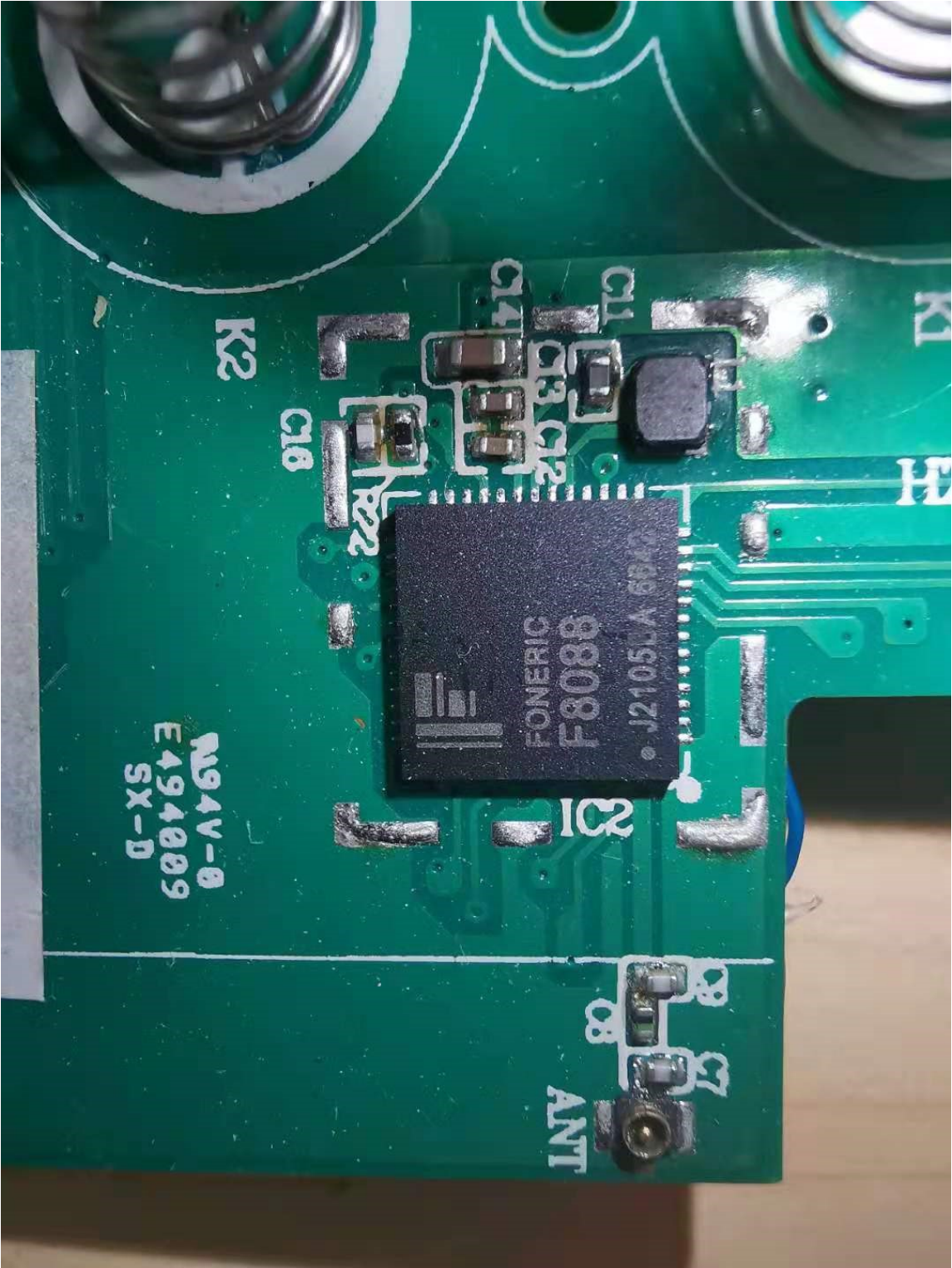


Figure 15: RF Circuit