

YSS004 BS081RL1 英文说明书

展开尺寸: 420*140mm

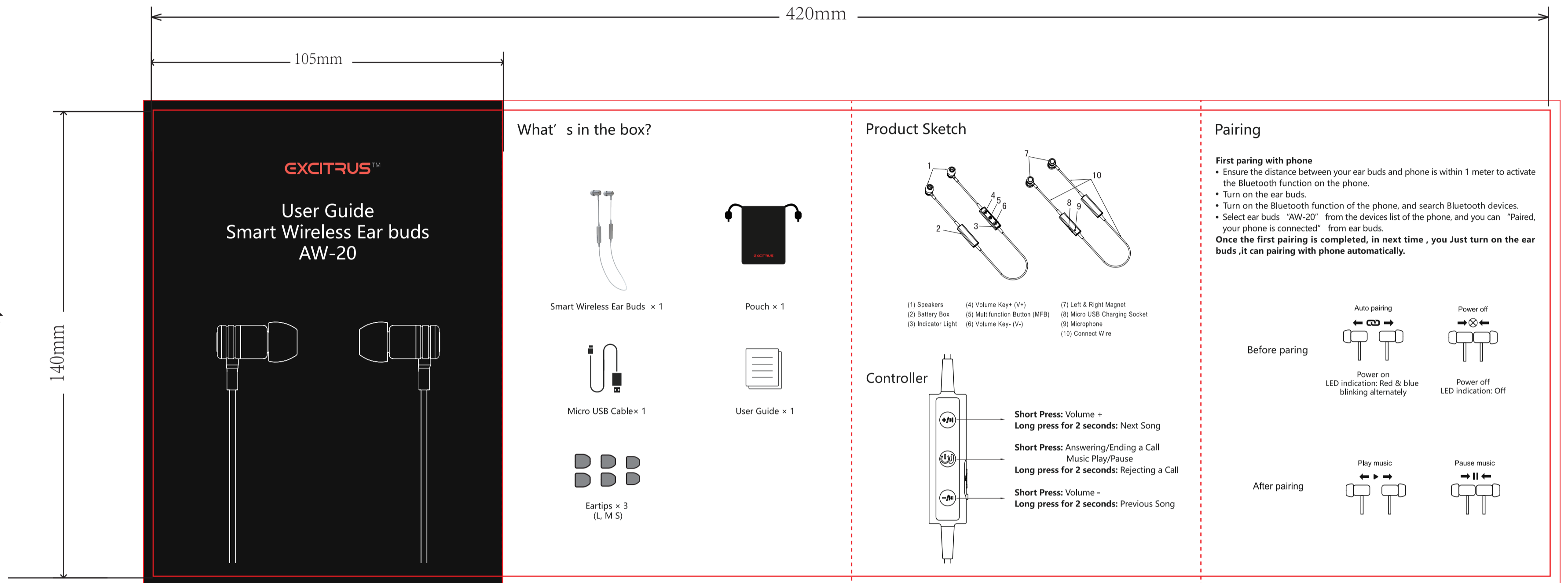
成品尺寸: 105*140mm

颜色: 4C+4C

材质: 128g 双铜纸

工艺: 无特殊工艺

正面



反面

| Troubles | Cause | Troubleshooting |
|--------------------------------------|---|---|
| Unable to turn on | Low battery | Charge ear buds for 2-3 hours |
| Unable to turn off | Can't turn off when turned on | Charge the ear buds to reset |
| No sounds after pairing | Incorrect pairing | Pairing again |
| Flashing red light when calling | Battery low | Please charge the ear buds immediately |
| No indication when charging | MicroUSB charging cable has no voltage output or DC power supply does not output | Check whether the MicroUSB charging cable is plugged in or DC power switch is turned on |
| Turn off automatically | Low battery | Charge the ear buds for 2 to 3 hours |
| Tremble in music playing and calling | Music issue or the volume is too loud | Turn down the volume |
| Magnetic function disorder | Due to too frequent operations | Charge and reset |
| No magnetic control function | Check if have dirty red sweat on both horn head magnets | Clean the dirty and sweat on the horn head magnets |
| Noise or echo when calling | Cause by environmental interferences or the distance between the earphone and the device is too far or the volume is too loud | Move to another place, or adjusting the distance between ear buds and device or turning down the volume |
| Low voice of the calling party | Ear buds are not equipped correctly | Adjust the position of the ear buds |
| Pairing and connecting slowly | Too many pairing records | Delete the pairing record as user guide |

| Charging | The Last Number Redialing | Forward/Backward |
|--|---|--|
| <p>Charging</p> <ul style="list-style-type: none"> Prior to using the ear buds for the first time or no use for a long time, please fully charge the battery. Approximately 2 hours are required to fully charge the ear buds. The indicator light turns red while being charged, and will turn blue automatically after being fully charged. When the ear buds is running out of battery, the indicator light will flash red (the ear buds will switch off automatically when the battery is drained). Please charge the ear buds as above steps in time to prolong the battery's useful life (Charging indication will be delayed for a few minutes if the ear buds has not been used for a long time or the battery is drained). <p>Note 1 : Use only the qualified charger to charge the ear buds, if use other device may violate the validation or the maintenance article of this product and may cause danger.</p> <p>Note 2 : Do not attempt to force open the built-in battery as this could damage the ear buds.</p> | <p>The Last Number Redialing</p> <p>Press MFB twice to redial the last phone number (when connect with phone).</p> | <p>Forward/Backward</p> <p>Press and hold "V+" or "V-" for 2 seconds to forward the next song or backward the previous song.</p> <p>Note:</p> <p>Due to technology of difference phones, it's not sure for all phones can go back to the previous song, it may be back to the beginning.</p> |
| <p>Answering a Call</p> <p>When a call is coming, you can answer it with the ways as follows:</p> <p>Way 1 : Press MFB once.</p> <p>Way 2 : Separate the magnetic ear buds and answer (When magnet stay together)</p> <p>Way 3 : Answer the call with your phone.</p> | <p>Calling Transferring</p> <p>During a call, press "V-" for 2 seconds and you will hear "Beep" prompt voice and can shift the call between cellphone and ear buds.</p> | <p>Delete Pairing Record on the Ear Buds</p> <ul style="list-style-type: none"> In ON and not connected mode, press and hold "V+" and "V-" until the red and blue light flashes twice at the same time, you will hear "Beep" prompt voice, then press and hold MFB for 3 seconds, the pairing record on the ear buds will be deleted. When all the pairing record is deleted, after the ear buds turn on again, it couldn't connected automatically and enter into pairing mode directly. |
| <p>Ending a Call</p> <p>You can end the call you are answering with the ways as follows:</p> <p>Way 1 : Press MFB once.</p> <p>Way 2 : Separate the magnetic ear buds and answer (When magnet stay together)</p> <p>Way 3 : Answer the call with your phone.</p> | <p>Two-call Handling</p> <p>When you are answering a call, there is another call coming:</p> <ul style="list-style-type: none"> Press MFB 2 seconds to end the current call and answer another one. Shortly press MFB once to answer another call and hold on the current one. After the above operation "2" settled, shortly press MFB to transfer one call to another. <p>Note:</p> <p>All the above operations have to respect the precondition that Phone supports Bluetooth hands free profile V1.5 and Phones are running under call holding function(Network service) from telecom.</p> | <p>Headset Resetting</p> <p>In any state, as long as the ear buds is charging, it will be reset.</p> |
| <p>Rejecting a Call</p> <p>Press and hold MFB for 2 seconds to reject the call.</p> | <p>Music Pause /Playing</p> <p>Way 1 : Shortly press MFB to PLAY music(paired and standby condition), press MFB again to PAUSE music.</p> <p>Way 2 : Pull apart the magnetic ear buds to play music while click them together to PAUSE.</p> | <p>Maintenance</p> <ul style="list-style-type: none"> Do not use abrasive cleaning solvents to clean the ear buds. Do not allow the ear buds to touch with any sharp objects as this will cause scratching and damage. Please keep headset away from high-temperature, humidity and dust. |
| <p>Mute</p> <p>During a call, press and hold "V+" for 3 seconds, the ear buds will enter into MUTE MODE. In MUTE MODE, the speaker will sound "Beep" twice every 10 seconds, you could cancel the MUTE MODE if press and hold "V+" for 3 seconds again..</p> | <p>Adjusting the Volume</p> <p>In call or music playing state, shortly press "V+" or "V-" once to adjust the volume. When the volume up to maximum or minimum, you could hear "Beep" voice prompt.</p> | <p>Specification</p> <p>Product Name: Smart Wireless Ear Buds</p> <p>Model Number: AW-20</p> <p>Bluetooth Version: Bluetooth 4.1</p> <p>Bluetooth Profile: HSP,HFP,A2DP,AVRCP</p> <p>Frequency Response: 20Hz-20KHz</p> <p>Supported Audio Format(s): SBC , MP3 , AAC</p> <p>Battery: 60mAh Lithium Battery</p> <p>Charging Connector: Micro-USB</p> <p>Charging Time : 2 hours</p> |

NOTE: This equipment has been tested and found to comply with the limits for a Class B digital device, pursuant to part 15 of the FCC Rules. These limits are designed to provide reasonable protection against harmful interference in a residential installation. This equipment generates noise and can radiate radio frequency energy and, if not installed and used in accordance with the instructions, may cause harmful interference to radio communications. However, there is no guarantee that interference will not occur in a particular installation. If this equipment does cause harmful interference to radio or television reception, which can be determined by turning the equipment off and on, the user is encouraged to try to correct the interference by one or more of the following measures:

Reorient or relocate the receiving antenna.

Increase the separation between the equipment and receiver.

Connect the equipment into an outlet on a circuit different from that to which the receiver is connected.

Consult the dealer or an experienced radio/TV technician for help. Changes or modifications not expressly approved by the party responsible for compliance could void the user's authority to operate the equipment. This device complies with Part 15 of the FCC Rules. Operation is subject to the following two conditions:

(1) This device may not cause harmful interference, and

(2) This device must accept any interference received, including interference that may cause undesired operation.