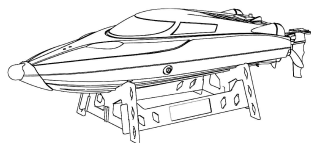


14+

NO. S0101

SINOVAN®

**HIGH SPEED REMOTE CONTROL SPEEDBOAT
MANUAL INSTRUCTION**



Operating Instructions

- The product adopts a 370-watt magnetic motor drive system, and adopts advanced 2.4G automatic frequency pairing technology, and the remote control distance is longer.
- Configure 180mAh lithium battery. The maximum speed is about 25 kilometers per hour.
- Hull size: 230x60x30mm.
- Feature rollover function: After capsizing during sailing, the hull can be controlled to roll over to ensure normal sailing.
- Motor water cooling system: prolonging the service life of the ship model.
- Self-contained left and right navigation rudders: enhances sailing stability.
- Low voltage alarm function: When the battery of the ship model is insufficient, the remote control will emit a "di-di-di" alarm sound. The model must be returned within one minute after the alarm sounds.
- Signal weakening alarm function: When the 2.4G signal weakens, the remote control will send out a di-di-di-di alarm sound.
- Lighting operation instructions: When the power is turned on, the light is turned on, press once to turn the light on, the front light is on when moving forward, and the rear light is on when moving backward. When pressed a second time, the light turns off.

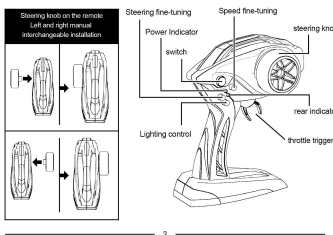
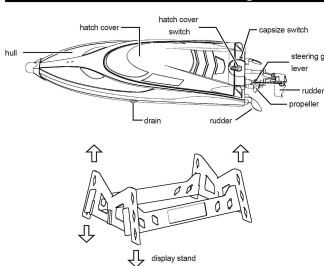
Safety warning

- In order to be safe and prevent the propeller from hitting the surrounding people, the ship model must go down into the water and pass through the water to conduct the receiving plate, so that the ship model can be used normally. The body cannot touch the rotating propeller.
- The product is suitable for people over 14 years old. It must be used under the supervision and guidance of an adult.
 - Do not mix new and old or different types of batteries, non-rechargeable batteries cannot be charged.
 - It is not advisable to charge the battery immediately after use. Wait until the battery cools down before charging.
 - When sailing with the model ship, make sure that no one is swimming in the sailing waters to avoid hurting people. There should be no aquatic plants or debris on the water surface to avoid the propeller being entangled in the water or the ship model being damaged.
 - The effective remote control distance is within 100 meters, please do not exceed the effective control range. Otherwise the ship model may get out of control.
 - When sailing to the point where the power of the ship model is low, the remote control will emit a "di-di" alarm sound. At this time, the speed of the ship model slows down and the battery can only maintain the sailing for about two minutes. The ship model can be returned by remote control, so as not to lose control of the ship model.
 - When the ship model is sailing, when the remote control is set to sailing, the remote control will send out the sound of di-di-di-di. At this time, the signal is weakened due to the long distance between the ship model and the remote control. It will affect the real time and accuracy of the low-voltage alarm mode of the remote control. Please keep the ship model far away (the low-voltage alarm signal difference alarm light of the remote control is always on). Make sure the low voltage alarm mode is normal.
 - When not in use, please turn off the power of the remote control and disconnect the power supply of the ship model.
 - When sailing the ship model, please pay attention to safety first. If you lose control of the ship model, you must choose a safe and reliable method to retrieve it. Never go into the water to retrieve the ship model without safety protection.

Maintenance

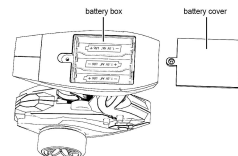
- When the ship model stops working, the battery must be removed.
- The surface of the ship model should avoid prolonged exposure to the sun to prevent paint peeling; after each use, the surface of the ship model should be cleaned with a soft cloth, and the water in the cabin should be absorbed to ensure that the hull is dry and clean, and prevent the internal components and threads from oxidizing, causing dysfunction.
- When the ship model is not used for a long time, the battery of the remote control should be taken from the remote control to prevent the battery leakage from damaging the remote control.

Main structural drawing

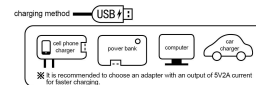


Controller battery installation

Battery installation: Open the battery cover of the remote control, insert 3 1.5V "AA" batteries into the battery box correctly according to the positive and negative directions of the battery, and cover the battery cover



battery charging



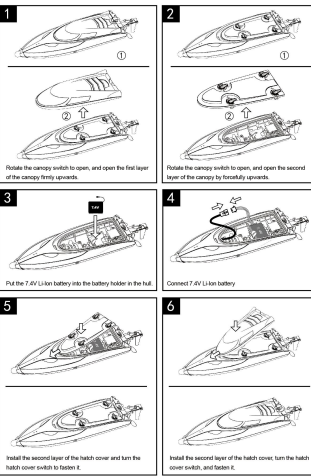
Connect the battery and the USB charging cable, then insert the USB plug into the computer's USB port or power adapter port. When charging, the USB red light is on, and the USB green light is on when charging is complete. The charging time is about 220 minutes. Please disconnect the charging cable when charging is complete.

NOTE: This equipment has been tested and found to comply with the limits for a Class B digital device, pursuant to part 15 of the FCC Rules. These limits are designed to provide reasonable protection against harmful interference in a residential installation. This equipment generates uses and can radiate radio frequency energy and, if not installed and used in accordance with the instructions, may cause harmful interference to radio communications. However, there is no guarantee that interference will not occur in a particular installation. If this equipment does cause harmful interference to radio or television reception, which can be determined by turning the equipment off and on, the user is encouraged to try to correct the interference by one or more of the following measures:

- Reorient or relocate the receiving antenna.
- Increase the separation between the equipment and receiver.
- Connect the equipment into an outlet on a circuit different from that to which the receiver is connected.
- Consult the dealer or an experienced radio/TV technician for help.

Changes or modifications not expressly approved by the party responsible for compliance could void the user's authority to operate the equipment.

Ship model battery installation

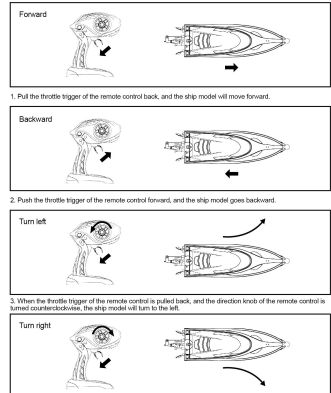


Note: 1. Make sure that the battery needs to be put into the battery holder to prevent the battery from shifting and being damaged.
2. The hatch cover should be installed and buckled in place to prevent water from entering the cabin.

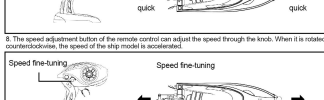
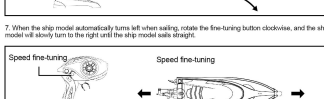
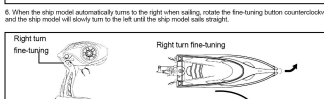
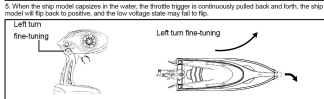
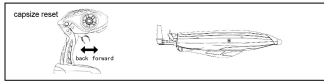
Remote control and ship model pairing frequency

Turn on the power switch of the remote control, the power indicator light of the remote control flashes and beeps two beeps, then set the boat model into the water, and the remote control continuously emits a beeping beep. The power indicator of the remote control turns into a steady light, and at the same time, the light of the ship changes from flashing to a steady light, which means that the frequency of the remote control and the ship model is successfully paired, and the ship model can be controlled normally.

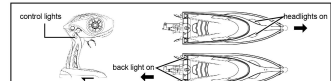
How to operate



4. When the throttle trigger of the remote control is pulled back, and the direction knob of the remote control is turned clockwise, the ship model will turn to the right.

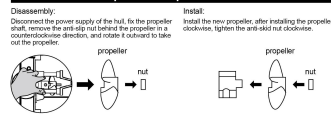


9. The speed adjustment button of the remote control can adjust the speed through the knob. When it is rotated clockwise, the speed of the ship model will slow down.



9. When the power is turned on, the light is turned on, press once to turn off the light, but the front light is on when moving forward, and the rear light is on when moving backward. When pressed a second time, the light turns off.

Propeller replacement



Analysis of common problems

No.	Problem	Cause Analysis	Solution
1	The outdoor light is not on	① low battery ② the propeller is not properly installed ③ the battery are not correctly installed	① Replace with a new battery of the same type ② Refer to the manual propeller control battery assembly method
2	The remote control cannot be connected with the ship model	① poor contact ② light waves not strong ③ Same as above ④ Other signal interference nearby	① Clean the air between the battery and the battery cases ② Turn on the light ③ Refer to the manual propeller control battery assembly method ④ Restart the ship model and remote control power
3	Lack of indication or unrecognizable	① Improper operation ② the electronic components of the remote control or ship model are damaged by multiple impact	① Follow the steps in the manual ② Go to the dealer to buy the corresponding parts and replace them in time
4	sailing on (cannot pass fine-tuning condition)	① the propeller is severely damaged ② the propeller is not installed ③ lithium-ion battery is low ④ lithium electronic over-use period or power over-discharge protection ⑤ poor contact	① Replace with new propeller ② Refer to the manual propeller assembly method ③ Charge the lithium battery according to the instructions ④ Go to the dealer to buy a new battery to replace or follow the instructions to recharge the lithium battery ⑤ Unplug the power plug and plug it again