

---

# Product Change Description

As the applicant of the below model, Barking Labs Corp. declares that the product,

FC1

is the variant of the initial certified product,

FC1

## **SOFTWARE MODIFICATIONS:**

Protocol Stack changes: NO  
MMS/STK changes: NO  
JAVA changes: NO  
Operating System and version changes: NO  
Firmware Version Product: 1.0  
Hardware Version Product: Rev.B  
Firmware Version Wi-Fi Component changes: NO  
WIFI drive changes: NO  
Supplicant changes: NO  
WIFI features changes: NO  
Other changes detailed: NO

## **HARDWARE MODIFICATION:**

Band changes: NO  
Power Amplifier changes: NO  
Antenna changes: NO  
PCB Layout changes: YES  
Components on PCB changes: YES  
LCD changes: NO  
Speaker changes: NO  
Camera changes: NO  
Vibrator changes: NO  
Bluetooth changes: NO  
FM changes: NO  
CPU changes: NO  
WIFI Changes: NO

---

Other changes:

**MECHANICAL MODIFICATIONS:**

Use new metal front/back cover or keypad: NO

Mechanical shell changes: NO

Other changes detailed: NO

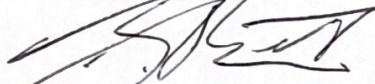
**ACCESSORY MODIFICATIONS:**

Battery changes: NO

AC Adaptor changes: NO

Earphone changes: NO

APPROVED BY: Bob Blake



Date: 2019-8-26

Company: Barking Labs Corp.

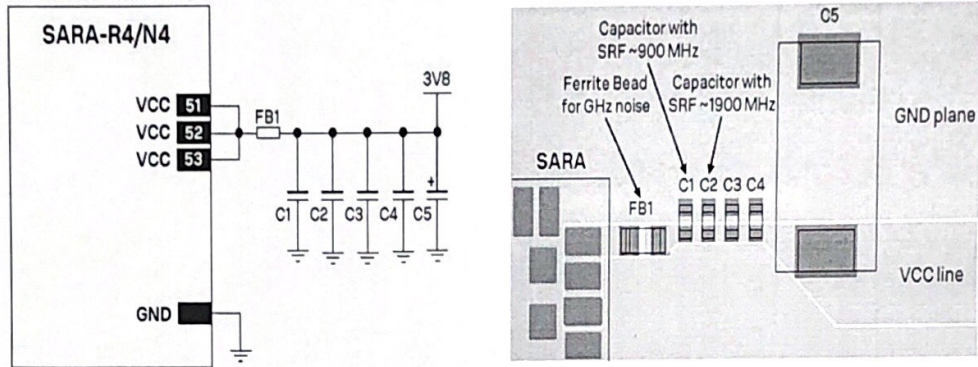
Address: 53 Bridge St., Suite 103, Brooklyn, NY, USA

Tel: +1-914-249-9347

Fax: N/A

## 1.1 Power Supply Decoupling Improvement

1.1.1 To follow SARA-R4 recommendations from u-blox, modify the schematics and PCB layout of FC1 as below.

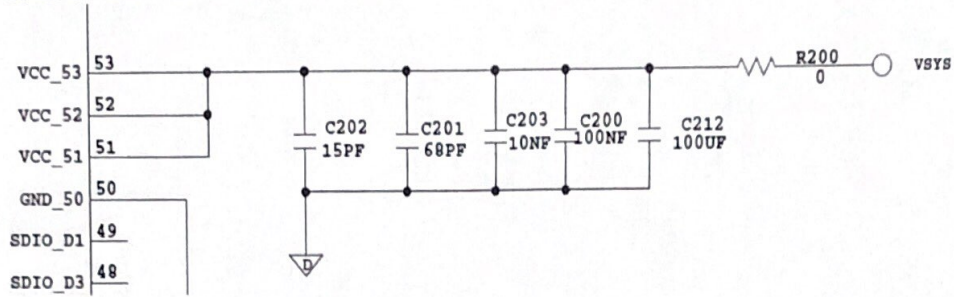


### 1.1.2 Change List:

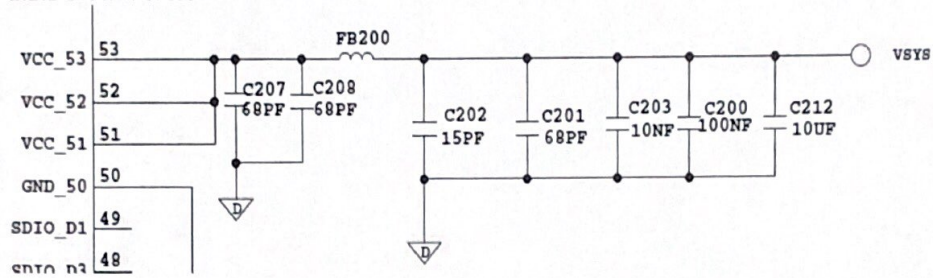
- 1) Change the 0 ohm resistor R200 to ferrite bead FB200 (refer to 1.2).
- 2) Move capacitors C201 and C202 to the location between bead and power supply (refer to 1.2).
- 3) Add 2 pcs 68pF capacitor (C207, C208) between the module and bead (refer to 1.2).
- 4) Change value of capacitor C212 to 10uF (refer to 1.2).
- 5) Remove 0 ohm resistor R101, and DNP footprint R102 (refer to 1.3).

## 1.2 Schematic Change (1)

### 1.2.1 Current Version

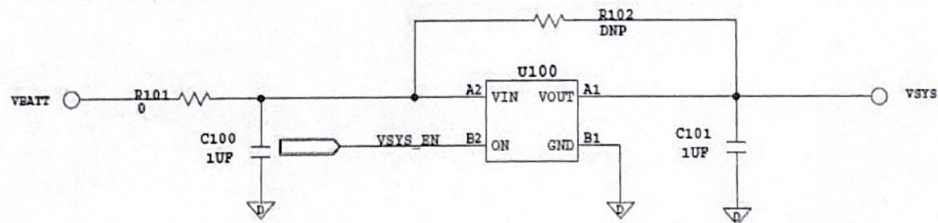


### 1.2.2 New Version

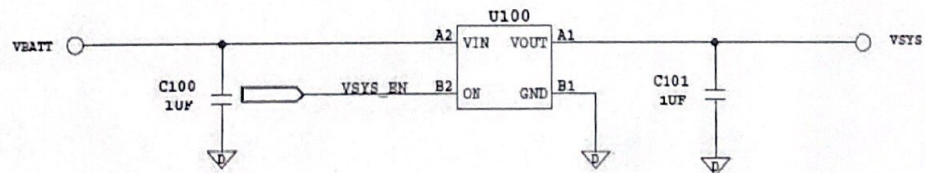


## 1.3 Schematic Change (2)

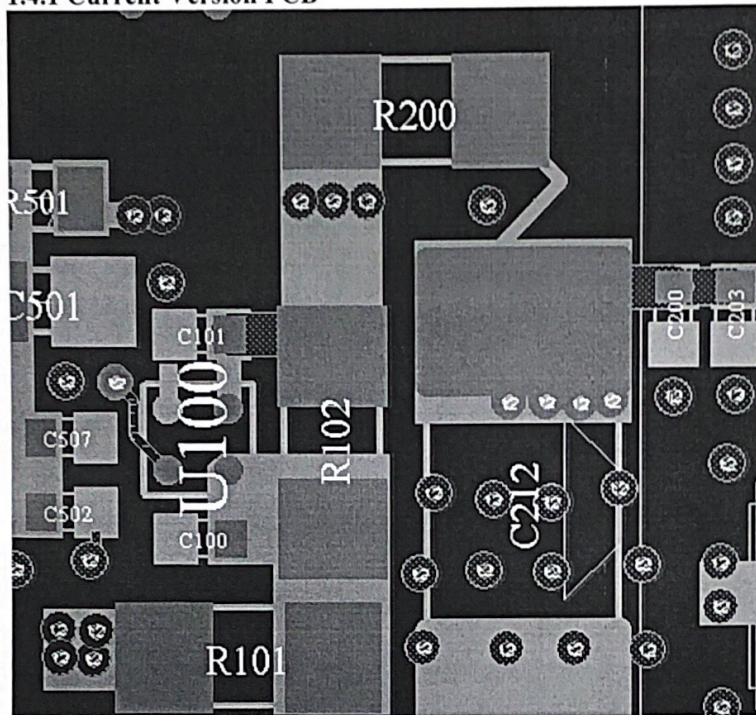
### 1.3.1 Current Version



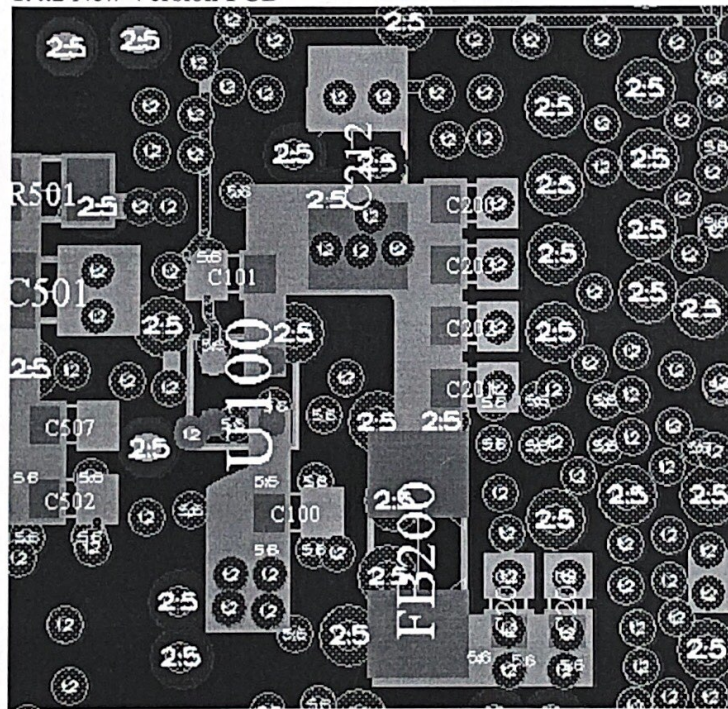
### 1.3.2 New Version



1.4 Layout Change (I-1)  
1.4.1 Current Version PCB



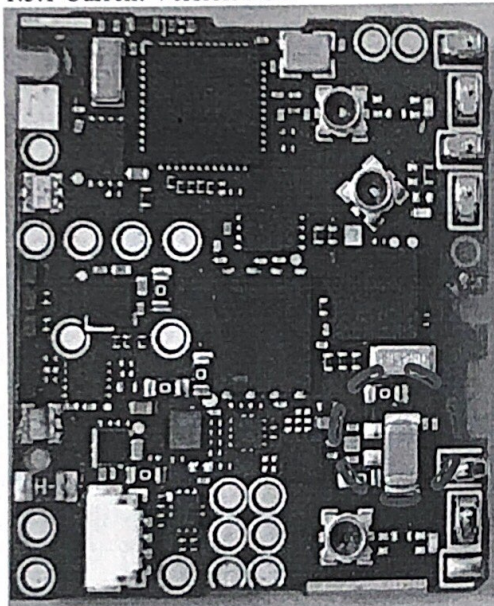
1.4.2 New Version PCB



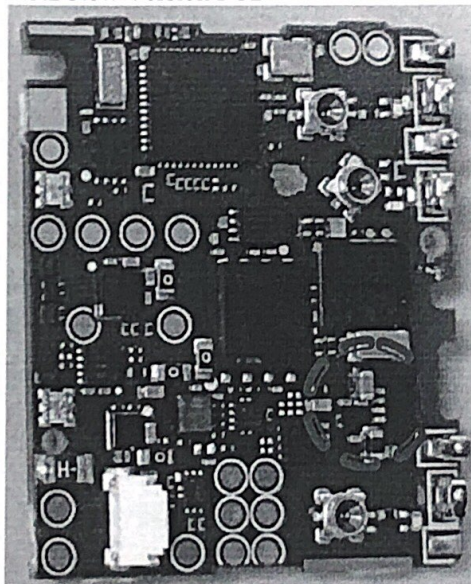
---

### 1.5 Layout Change(1-2)

#### 1.5.1 Current Version PCB

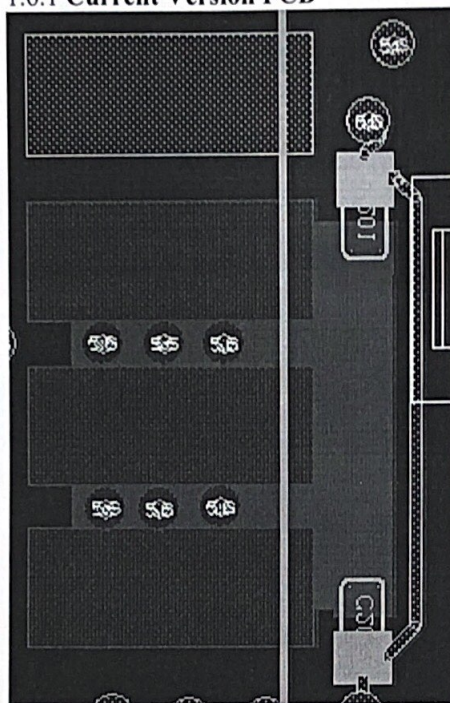


#### 1.5.2 New Version PCB

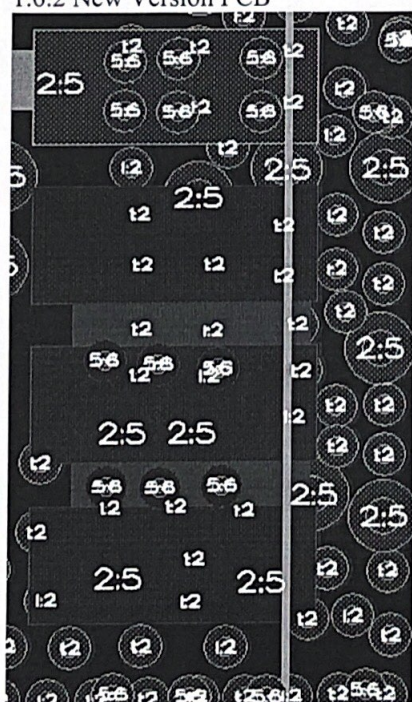


## 1.6 Layout Change(2-1)

### 1.6.1 Current Version PCB



### 1.6.2 New Version PCB



## 1.7 Layout Change(2-2)

### 1.7.1 Current Version PCB



### 1.7.2 New Version PCB

